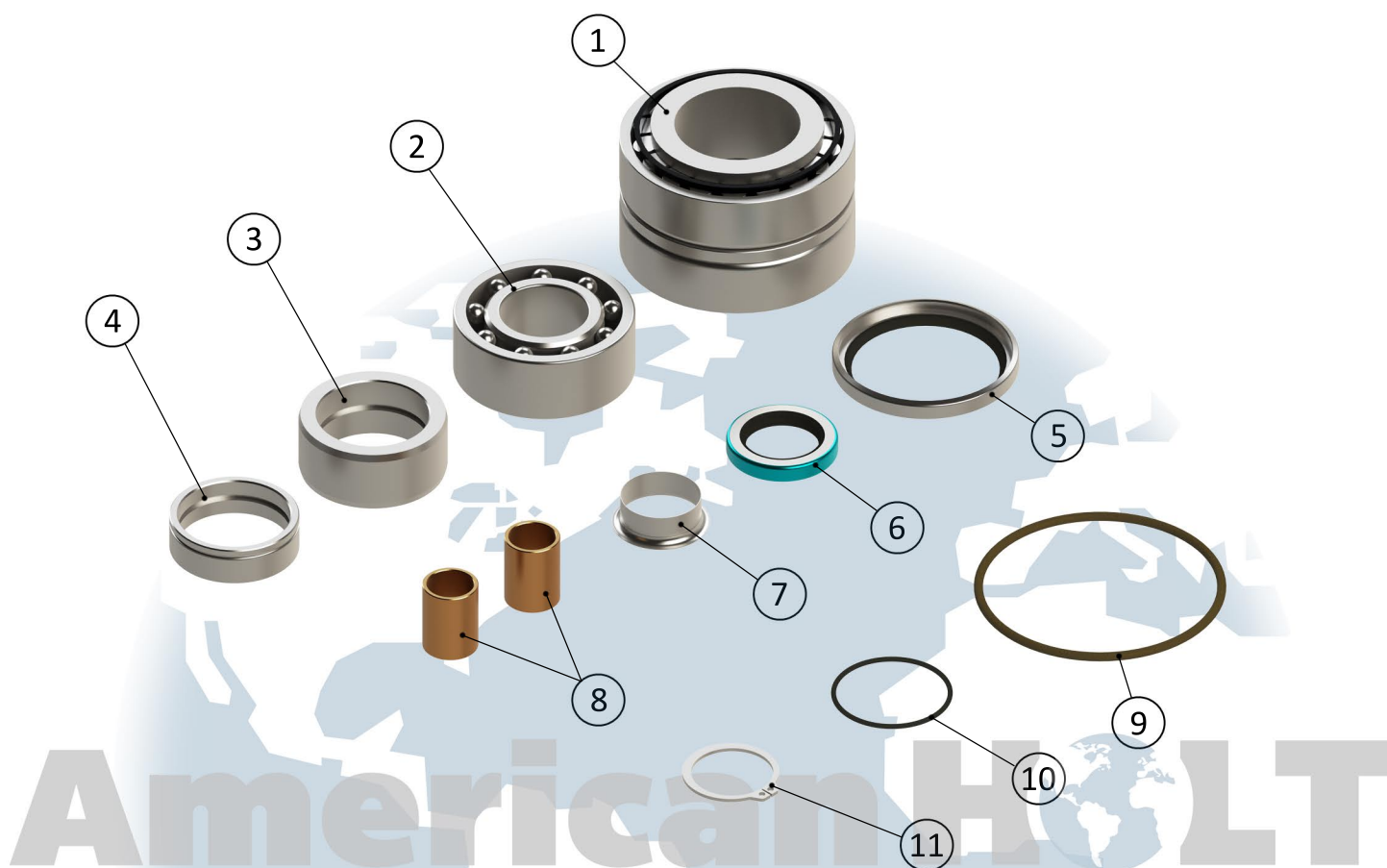


Aftermarket Parts for: 12V-SPINDLE-KITAH



| ITEM NO. | PART NO. | DESCRIPTION | QTY. |
|----------|-----------|-------------------------------------|------|
| 1 | 115S816AH | Tapered Roller Bearing Assembly | 1 |
| 2 | 34L816AH | Ball Bearing | 1 |
| 3 | 503L853AH | Seal Sleeve - Top | 1 |
| 4 | 504L853AH | Seal Sleeve - Bottom, 202 and under | 1 |
| 5 | 133L815AH | Oil Seal - Single Lip | 1 |
| 6 | 8L415AH | Oil Seal | 1 |
| 7 | 3S815AH | Sleeve (INCLUDES INSTALLATION TOOL) | 1 |
| 8 | 48L816AH | Oilite Bushing | 2 |
| 9 | 24L815AH | O-Ring, Fluoropolymer Elastomer | 1 |
| 10 | 28L815AH | O-Ring, Fluoropolymer Elastomer | 1 |
| 11 | 1P117AH | Retaining Ring - Nickel Plated | 1 |

sales@americanholt.com

www.americanholt.com

**Call American Holt at
781-440-9993 for details.**

American HOLT
engineered savings®

NOTICE: All parts offered by American Holt are manufactured by or for American Holt and not by or for the Original Equipment Manufacturer. Part Numbers shown that are those of the Original Equipment Manufacturer, if any, are used for reference purposes only. American Holt is an independent supplier of quality replacement parts having no affiliation with any Original Equipment Manufacturer. All prices are subject to change without notice. Copyright 2019 American Holt Corp. All rights reserved.