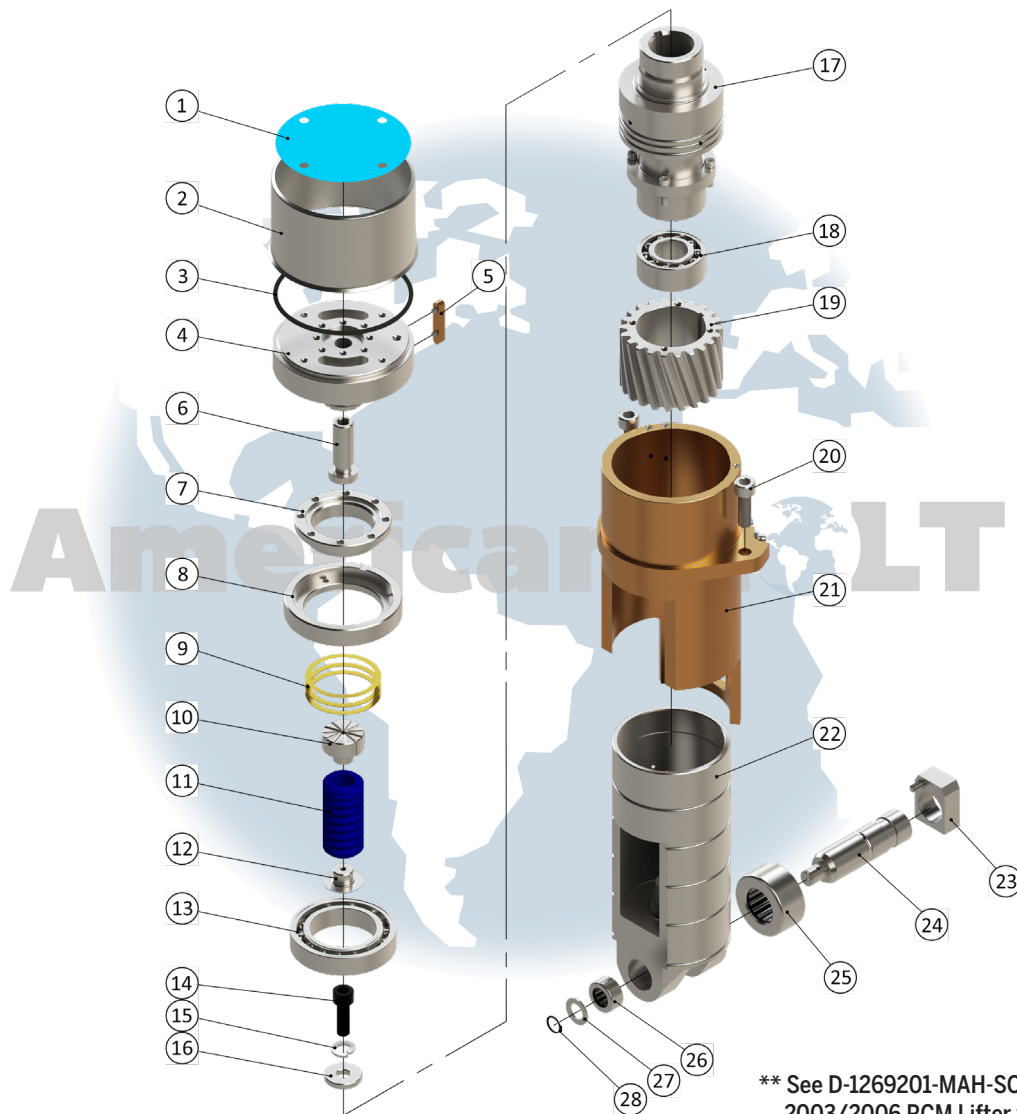


2003 & 2006 RCM - Can Holding Chuck Assembly

D-1269201-MAH



**** See D-1269201-MAH-SOLIDAH for 2003/2006 RCM Lifter with solid cam roll.**

Item No.	Part No.	Description	Qty
1	B-683671AH	Shim - 0.005 Thick	1
2	B-794021AH	Shield	1
3	662792AH	O-Ring	1
4	N998703AH	Spindle (INCLUDES HARDWARE)	1
5	53007AH	Key (INCLUDES HARDWARE)	1
6	N-536067AH	Driving Hub Nut	1
7	N-536068AH	Spindle Nut	1
8	835263AH	Seamer Lifter Screw	1
9	835376AH	Seamer Spring Retainer (INCLUDES HARDWARE)	1
10	669978AH	Spring	1
11	532446AH	Spring Plug	1
12	Socket HD Capscrew M10X1.5X30 LH	Screw - Left Hand	1
13	Washer 10.7 X 18.1	Split Lock Washer	1
14	666299AH	Turned Washer	1

Item No.	Part No.	Description	Qty
15	B925807AH	Shims - Kit	1
16	72200AH	Bearing	1
17	N922373AH	Hub (INCLUDES HARDWARE)	1
18	70551AH	Bearing	1
19	N-922372AH	Gear	1
20	Socket HD Capscrew SS M10X1.5X30	Screw	2
21	1269125AH	Driven Lifter Bushing (INCLUDES HARDWARE)	1
22	1269124AH	Plunger (INCLUDES HARDWARE)	1
23	1269129AH	Block (INCLUDES HARDWARE)	1
24	1269128AH	Cam Follower Shaft	1
25	662513AH	Cam Bearing Follower	1
26	664400-0.5AH	Cam Bearing Follower	1
27	452215-0.500AH	1/2" I.D. Washer	1
28	622638AH	External Retaining Ring	1

NOTICE: All parts offered by American Holt are manufactured by or for American Holt and not by or for the Original Equipment Manufacturer. Part numbers shown that are those of the Original Equipment Manufacturer, if any, are used for reference purposes only. American Holt is an independent supplier of quality replacement parts having no affiliation with any Original Equipment Manufacturer. All prices are subject to change without notice. Copyright ©2019 American Holt Corp. All rights reserved.

IN STOCK AND READY TO SHIP.

FOR MORE INFORMATION, PLEASE CONTACT AMERICAN HOLT AT:
781-440-9993 • sales@americanholt.com • www.americanholt.com

American HOLT
engineered savings®