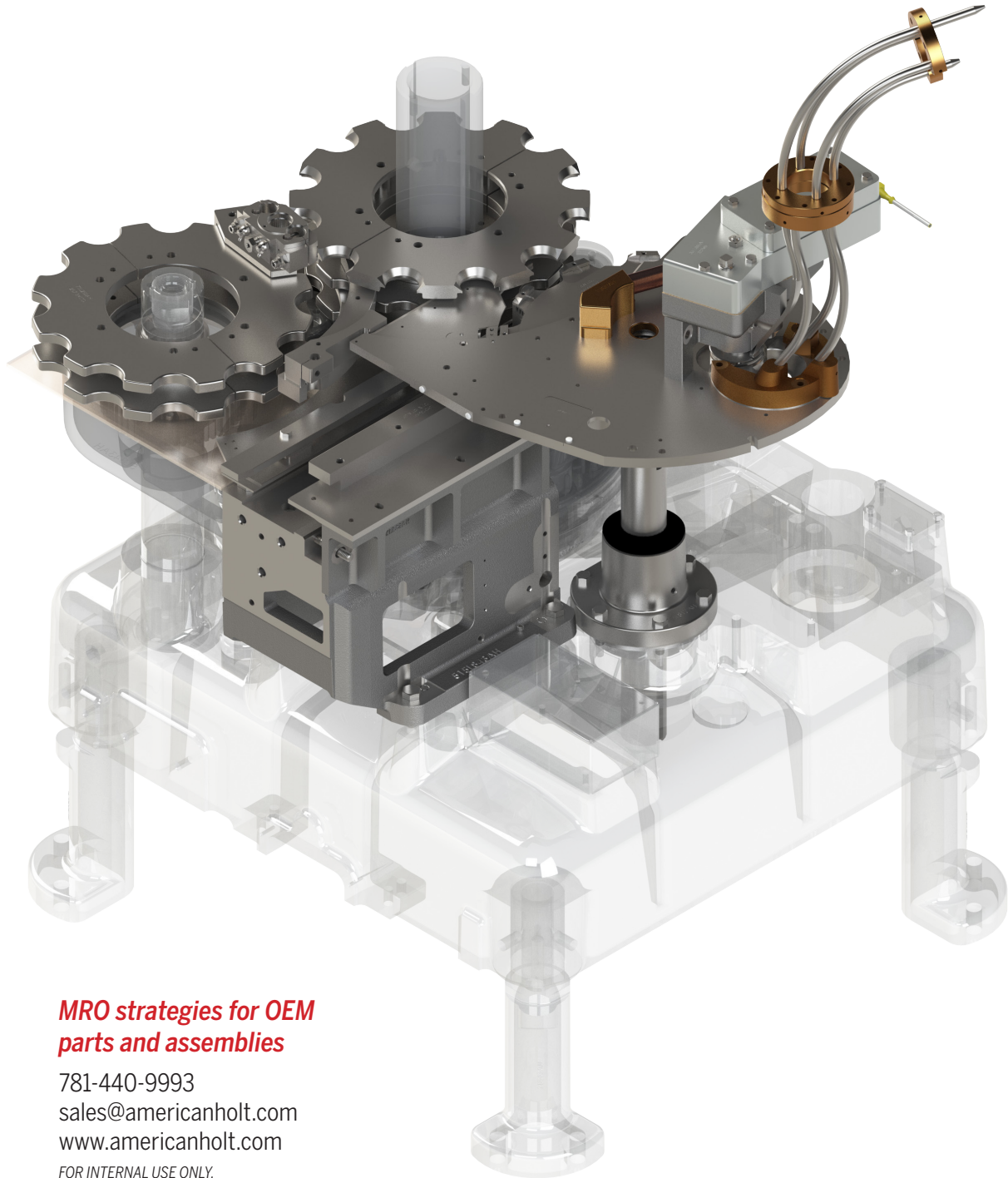


120L/121L Change Parts

REFERENCE GUIDE



***MRO strategies for OEM
parts and assemblies***

781-440-9993

sales@americanholt.com

www.americanholt.com

FOR INTERNAL USE ONLY.
SUBJECT TO REVISIONS.

American HOLT
engineered savings®

American Holt is a full-service engineering firm focused on the reverse engineering of high-usage machinery components. Founded in 1995, American Holt manufactures aftermarket replacement parts for machines used by the beverage, food processing, packaging, and paper converting industries. We provide engineered savings to customers around the world.

CONTACT:

American Holt
203 Carnegie Row
Norwood, MA 02062
781-440-9993
sales@americanholt.com

HOURS:

Monday-Friday
8:00am to 5:00pm EST

SALES:

Tom St. Lawrence, President
Charlene Butts, Sales Manager

NOTICE:

All parts offered by American Holt are manufactured by or for American Holt and not by or for the Original Equipment Manufacturer. Part numbers shown that are those of the Original Equipment Manufacturer, if any, are used for reference purposes only. American Holt is an independent supplier of quality replacement parts having no affiliation with any Original Equipment Manufacturer. All prices are subject to change without notice.

Copyright ©2022 American Holt Corp. All rights reserved.

Table of Contents

120L/121L Change Parts Guide

Overview

Body-Handling Parts

Lid-Handling Parts

Quick Change Parts

2

4

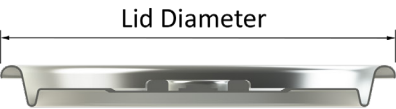
6

8

AFTER MARKET PARTS FOR:

CAN & LID DIMENSIONS

Description (Lid/Can X Height)	Can (Body) Diameter	Can Volume	Can Height	Lid (Curl) Diameter
200/202 X 312	2.080 ±0.008 52.83mm	5.5oz 163ml	3.750 ±0.015 95.25mm	2.244 57mm
200/202 X 401	2.080 ±0.008 52.83mm	6.3oz 187ml	4.047 ±0.015 102.8mm	
200/202 X 415	2.083 ±0.008 52.91mm	8oz 237ml	4.938 ±0.015 125.4mm	
200/202 X 504	2.110 Max. 53.3mm	8.4oz 250ml	5.276 ±0.015 134mm	
202/204 X 602	2.260 ±0.008 57.4mm	12oz 355ml	6.127 ±0.015 155.6mm	2.337 59.4mm
202/211 X 413	2.600 ±0.008 66mm	12oz 355ml	4.812 ±0.015 122.2mm	
202/211 X 603	2.600 ±0.008 66mm	16oz 473ml	6.190 ±0.015 157.2mm	
202/211 X 707	2.601 Max. 66mm	19.21oz 568ml	7.405 ±0.015	
206/300 X 710	2.875 ±0.008 73mm	24oz 710ml	7.604 ±0.015 193.1mm	2.540 64.5mm
209/300 X 710	2.875 ±0.008 73mm	23oz 680ml	7.600 ±0.015 193mm	2.740 69.6mm



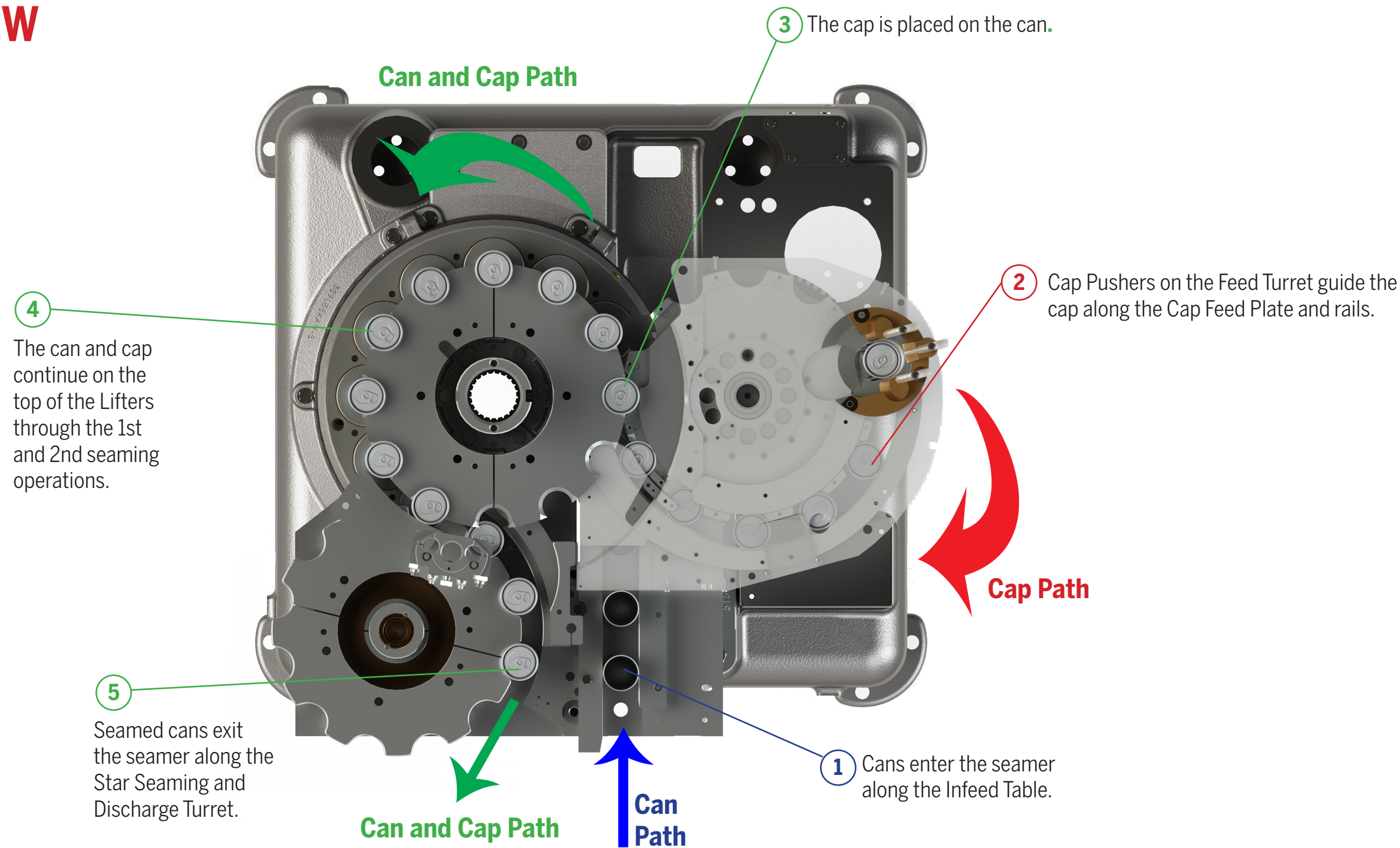
120L/121L Change Parts

IN-STOCK AND READY TO SHIP.

AFTER MARKET PARTS FOR:

* Item made-to-order

OVERVIEW



NOTICE: All parts offered by American Holt are manufactured by or for American Holt and not by or for the Original Equipment Manufacturer. Part numbers shown that are those of the Original Equipment Manufacturer, if any, are used for reference purposes only. American Holt is an independent supplier of quality replacement parts having no affiliation with any Original Equipment Manufacturer. All prices are subject to change without notice. Copyright ©2020 American Holt Corp. All rights reserved.

FOR MORE INFORMATION, CONTACT AMERICAN HOLT AT:
781-440-9993 • sales@americanholt.com • www.americanholt.com

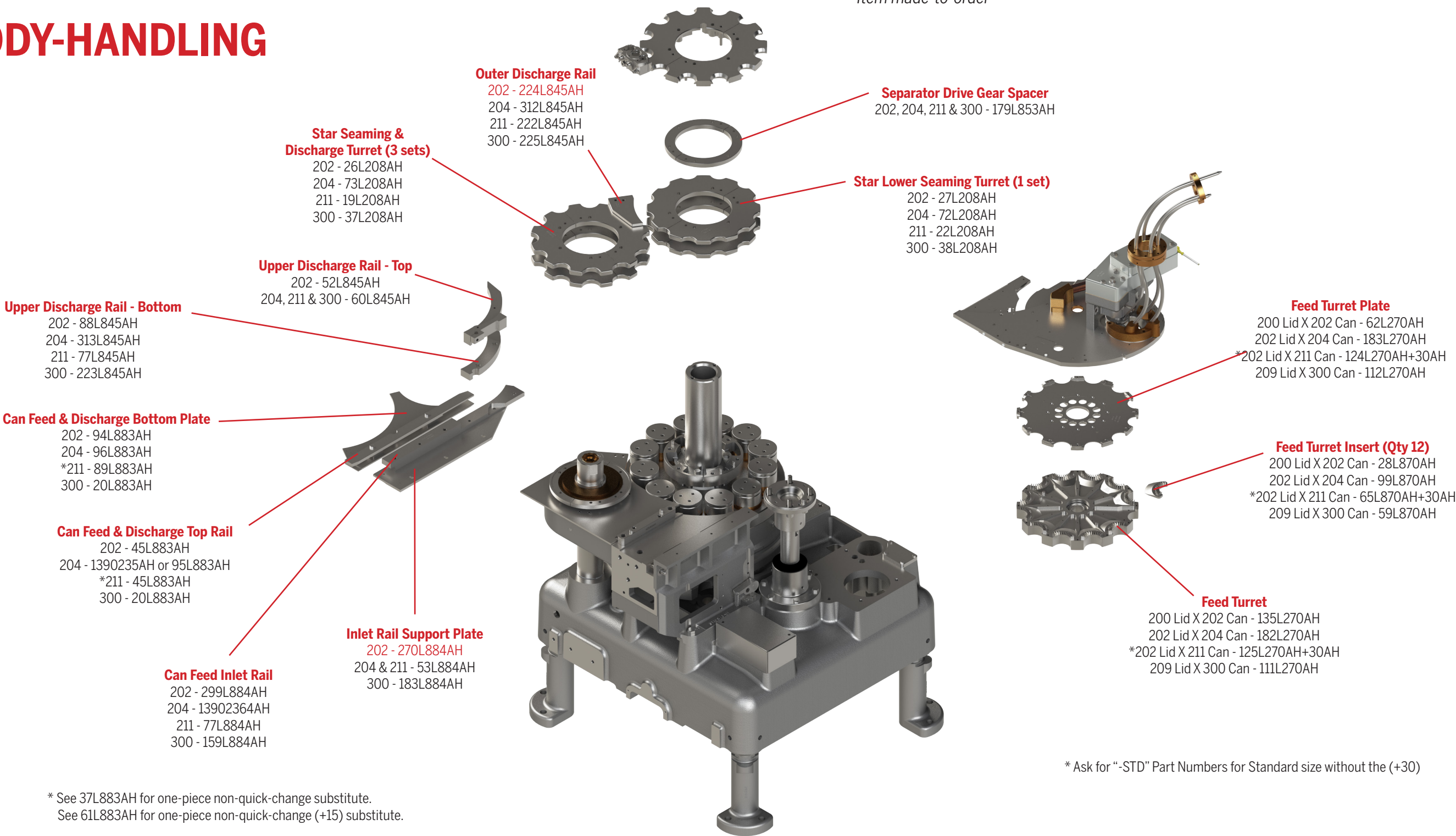
120L/121L Change Parts

IN-STOCK AND READY TO SHIP.

AFTER MARKET PARTS FOR:

BODY-HANDLING

* Item made-to-order



NOTICE: All parts offered by American Holt are manufactured by or for American Holt and not by or for the Original Equipment Manufacturer. Part numbers shown that are those of the Original Equipment Manufacturer, if any, are used for reference purposes only. American Holt is an independent supplier of quality replacement parts having no affiliation with any Original Equipment Manufacturer. All prices are subject to change without notice. Copyright ©2020 American Holt Corp. All rights reserved.

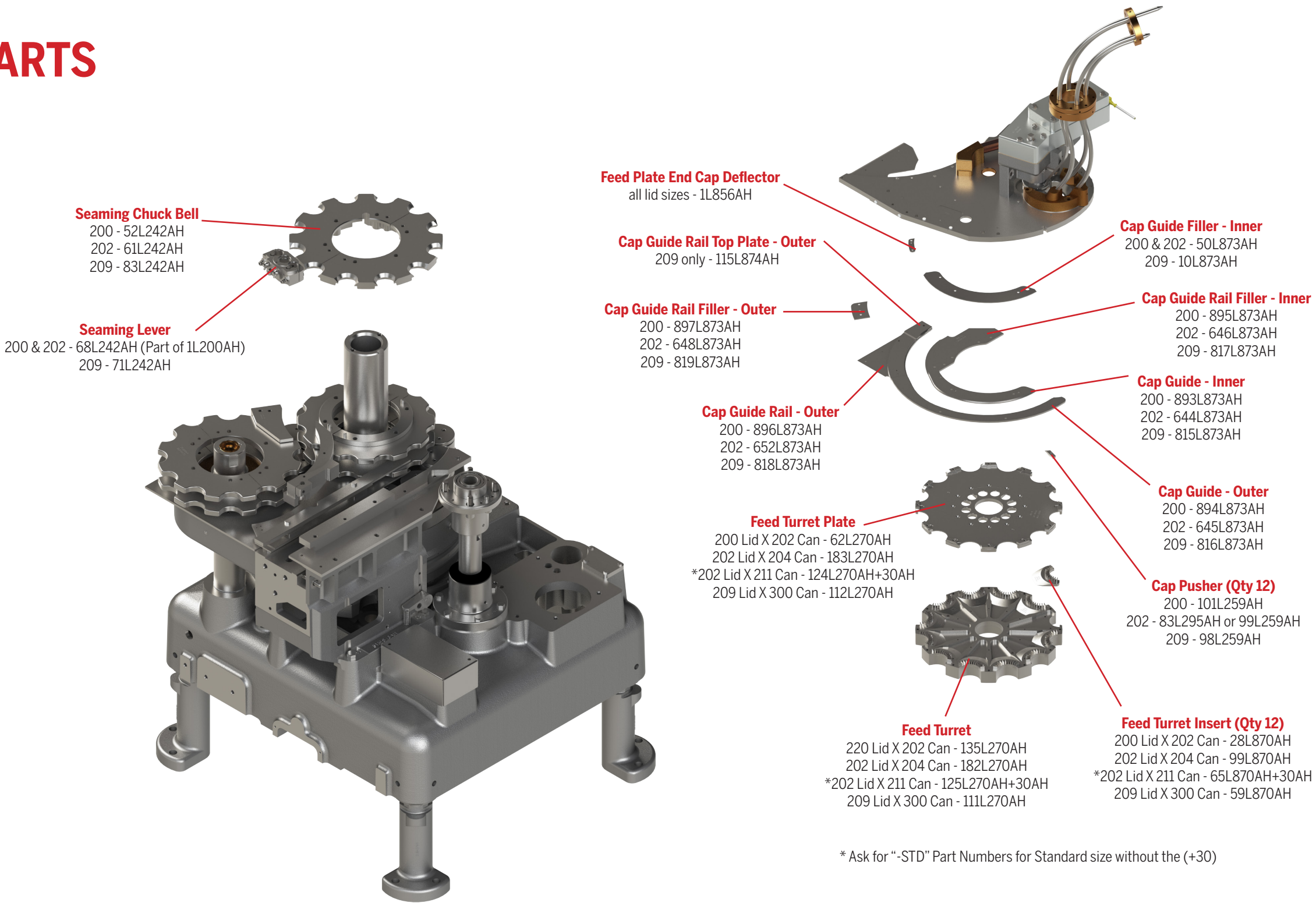
FOR MORE INFORMATION, CONTACT AMERICAN HOLT AT:
781-440-9993 • sales@americanholt.com • www.americanholt.com

120L/121L Change Parts

IN-STOCK AND READY TO SHIP.

AFTER MARKET PARTS FOR:

LID-HANDLING PARTS



NOTICE: All parts offered by American Holt are manufactured by or for American Holt and not by or for the Original Equipment Manufacturer. Part numbers shown that are those of the Original Equipment Manufacturer, if any, are used for reference purposes only. American Holt is an independent supplier of quality replacement parts having no affiliation with any Original Equipment Manufacturer. All prices are subject to change without notice. Copyright ©2020 American Holt Corp. All rights reserved.

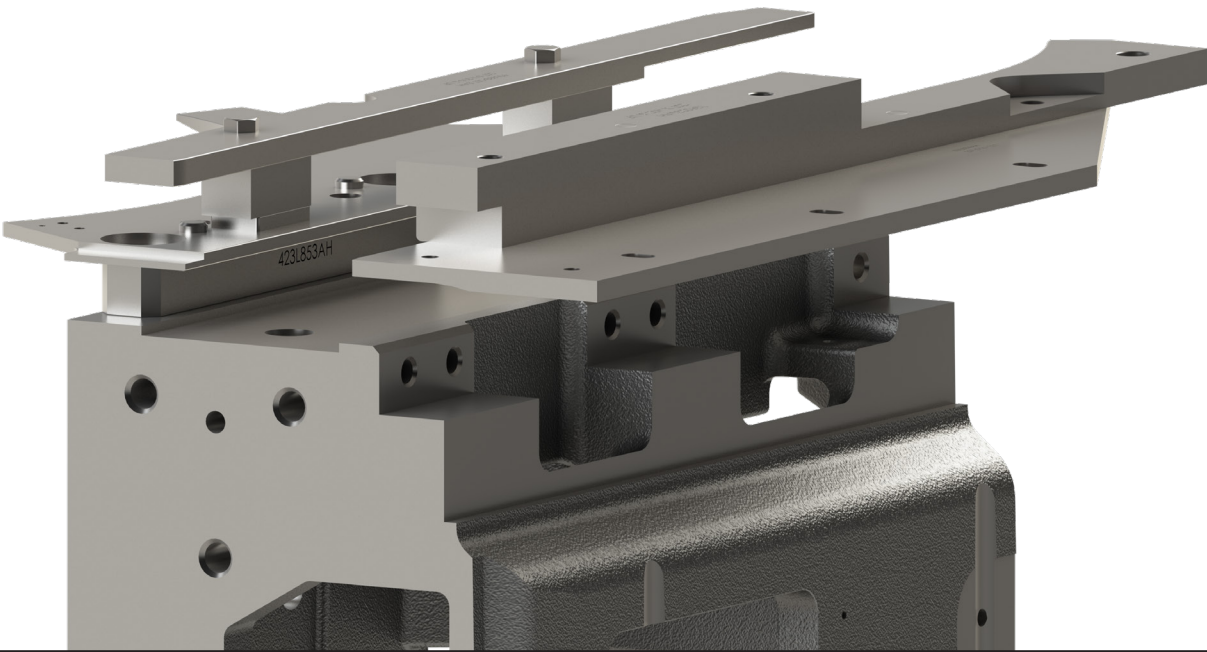
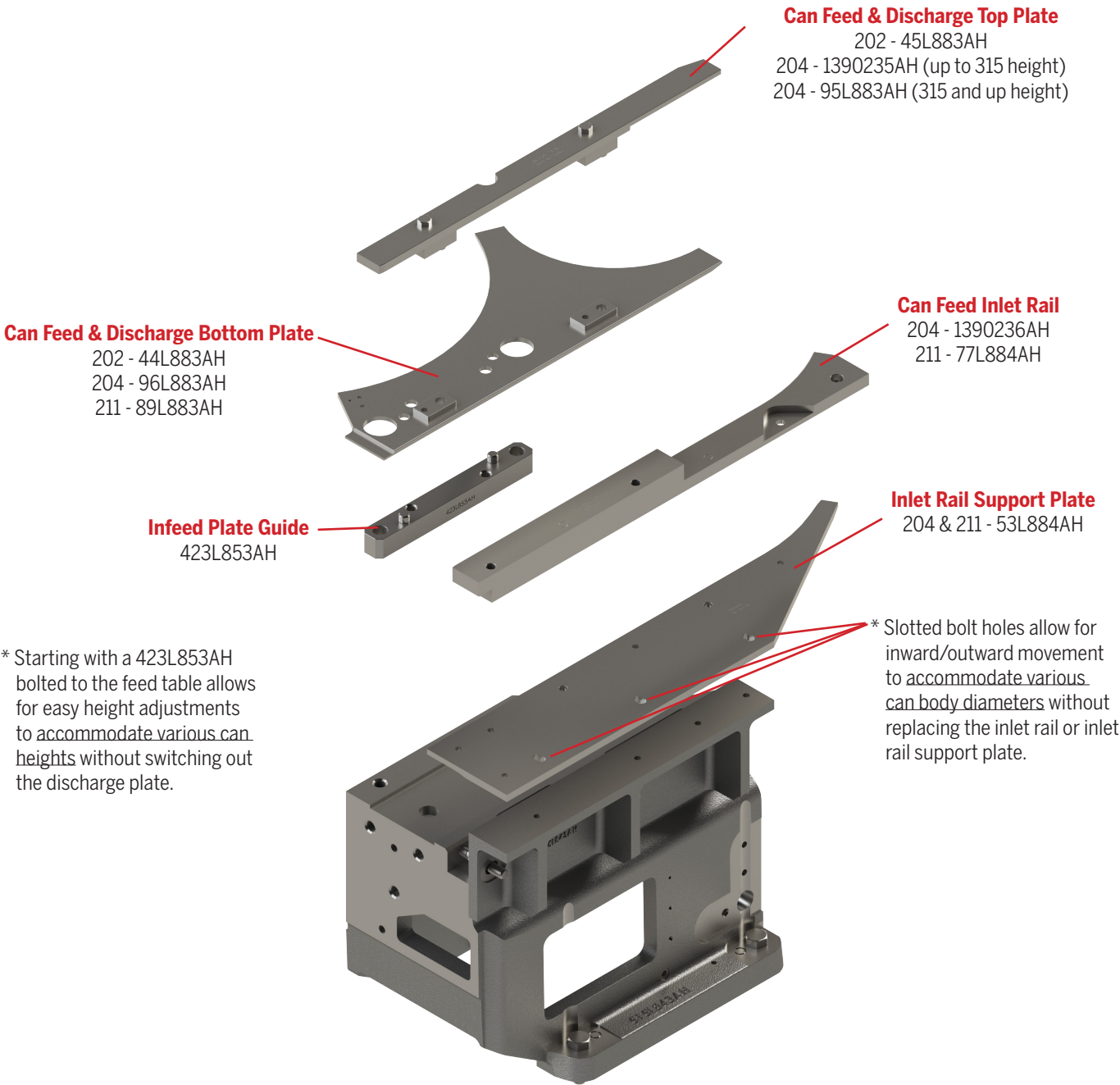
FOR MORE INFORMATION, CONTACT AMERICAN HOLT AT:
781-440-9993 • sales@americanholt.com • www.americanholt.com

120L/121L Change Parts

IN-STOCK AND READY TO SHIP.

AFTER MARKET PARTS FOR:

QUICK CHANGE PARTS



NOTICE: All parts offered by American Holt are manufactured by or for American Holt and not by or for the Original Equipment Manufacturer. Part numbers shown that are those of the Original Equipment Manufacturer, if any, are used for reference purposes only. American Holt is an independent supplier of quality replacement parts having no affiliation with any Original Equipment Manufacturer. All prices are subject to change without notice. Copyright ©2020 American Holt Corp. All rights reserved.

FOR MORE INFORMATION, CONTACT AMERICAN HOLT AT:

781-440-9993 • sales@americanholt.com • www.americanholt.com

American Holt - Fast Track Quote Request

EMAIL: sales@americanholt.com TEXT: 339-364-9900

Our Fast Track Quote Request allows you to quickly and easily provide key information that can help us to provide a preliminary quote.

You are also welcome to ship the part to us for a quote as well - American Holt, 203 Carnegie Row, Norwood, MA 02026



1. Provide Some Information

Use this page to fill out some key information about your part.



2. Photograph the Part

Place your part on this grid and take a few photos of the full page.



3. Send a Text or Email

Text or email a photo to
us or a quote!

[illegible]

OEM NAME:

OEM MODEL:

OEM PART NUMBER:

OEM PRICE:

DESCRIPTION:

ANNUAL USAGE:

IS IT MAGNETIC?:

APPROXIMATE WEIGHT: