

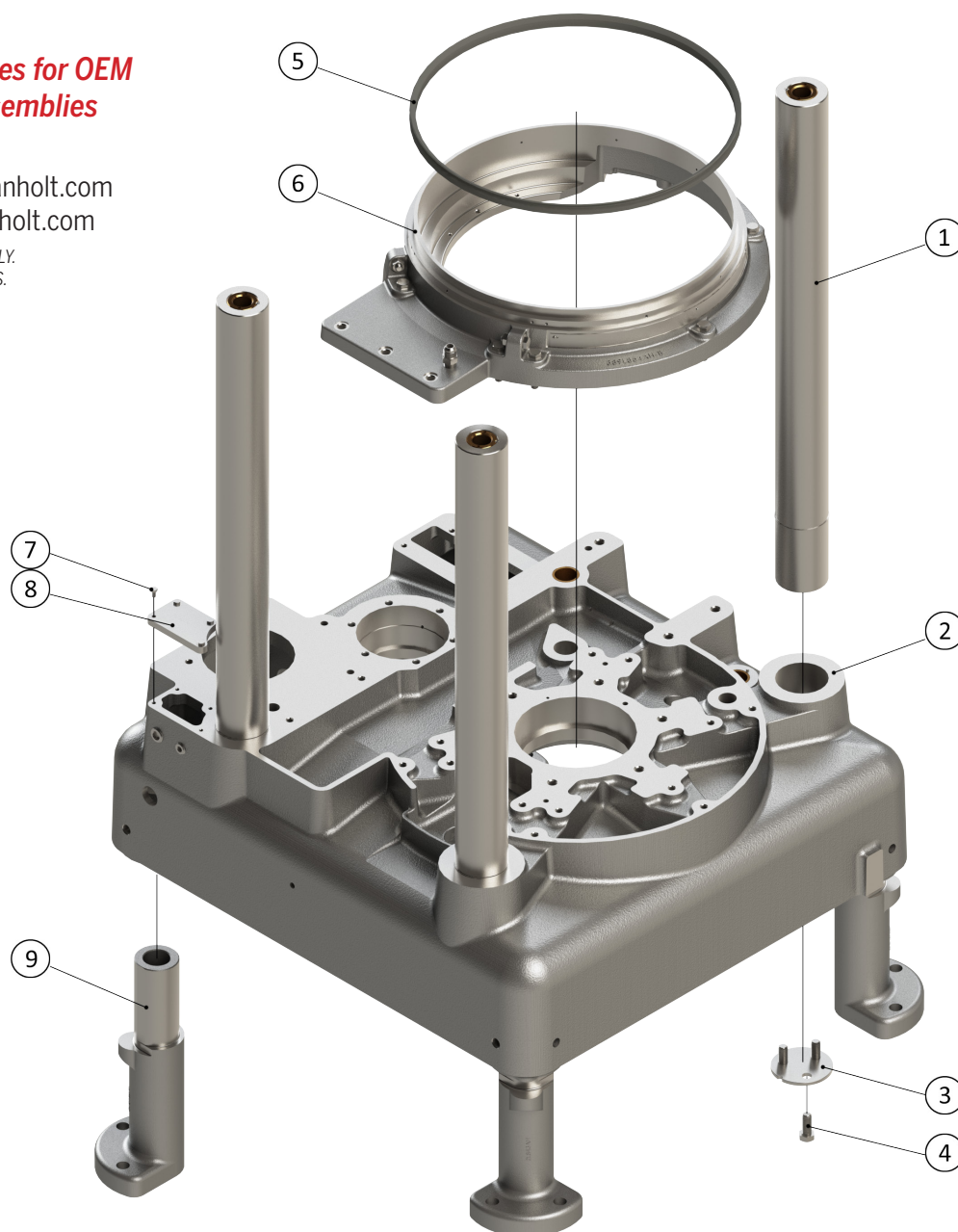
# 100L Seamer

## REFERENCE GUIDE

**MRO strategies for OEM  
parts and assemblies**

781-440-9993  
sales@americanholt.com  
www.americanholt.com

FOR INTERNAL USE ONLY.  
SUBJECT TO REVISIONS.





**American Holt is a full-service engineering firm focused on the reverse engineering of high-usage machinery components. Founded in 1995, American Holt manufactures aftermarket replacement parts for machines used by the beverage, food processing, packaging, and paper converting industries. We provide engineered savings to customers around the world.**

**CONTACT:**

American Holt  
203 Carnegie Row  
Norwood, MA 02062  
781-440-9993  
sales@americanholt.com

**HOURS:**

Monday-Friday  
8:00am to 5:00pm EST

**SALES:**

Tom St. Lawrence, President  
Charlene Butts, Sales Manager

**NOTICE:**

*All parts offered by American Holt are manufactured by or for American Holt and not by or for the Original Equipment Manufacturer. Part numbers shown that are those of the Original Equipment Manufacturer, if any, are used for reference purposes only. American Holt is an independent supplier of quality replacement parts having no affiliation with any Original Equipment Manufacturer. All prices are subject to change without notice.*

*Copyright ©2021 American Holt Corp. All rights reserved.*

# Table of Contents

---

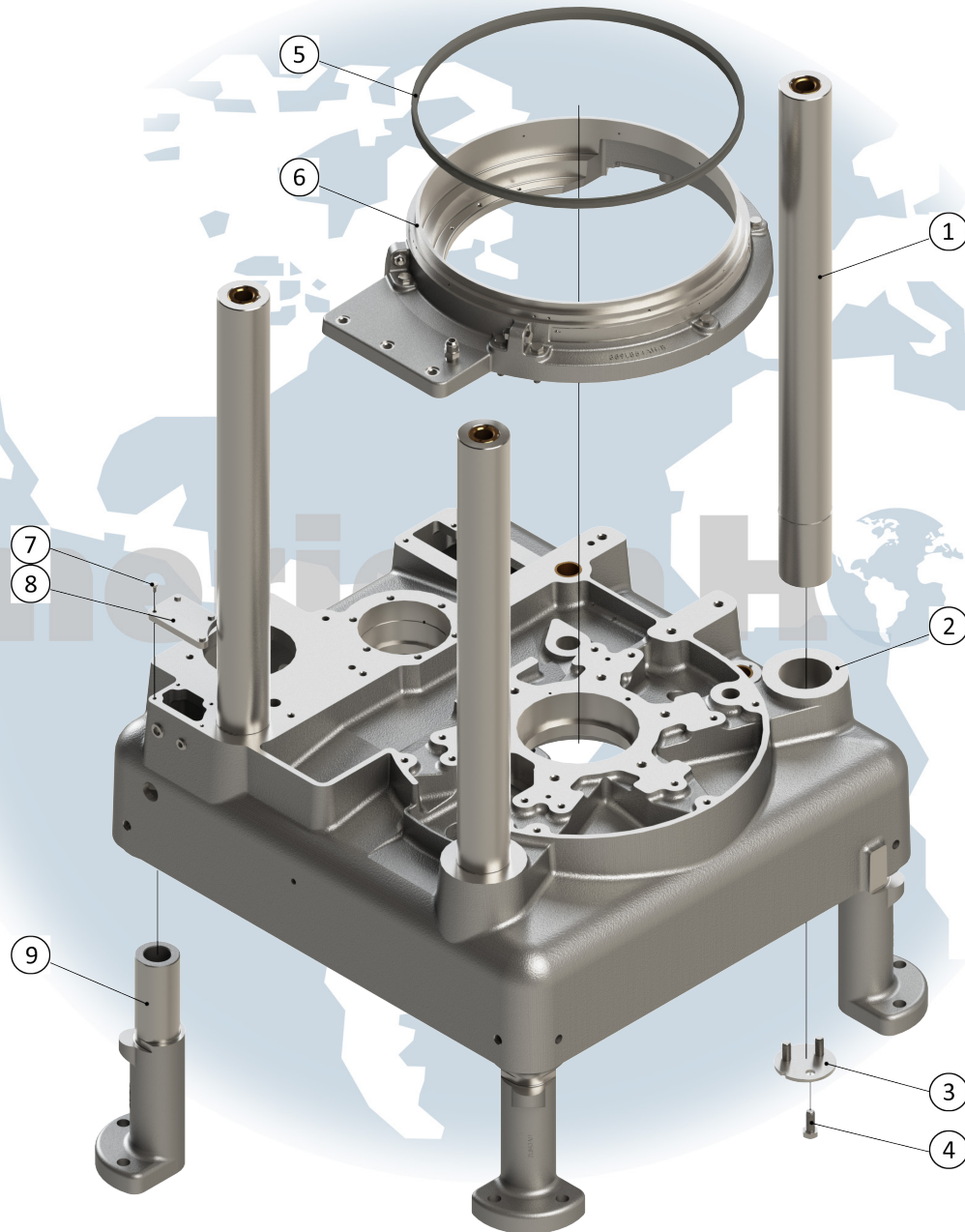
## 100L Seamer

Base .....	2
Can Feed Table .....	4
Table Unit.....	6
Base Discharge Idler Gear .....	8
Base Discharge Intermediate.....	10
Base Intermediate Gear .....	12
Can Feed & Discharge - Part 1 .....	14
Can Feed & Discharge - Part 2.....	16
Feed Turret Gear .....	18
Filler Drive 1 .....	20
Filler Drive 2 .....	22
In-Motion Timer .....	24
Electric Tooth Clutch .....	26
Lower Chuck Bottom .....	28
Lower Chuck Top .....	30
Seaming Spindle .....	32
Lower Turret .....	34
Upper Turret .....	36
Separator Drive .....	38

# 100L Seamer

AFTER MARKET PARTS FOR:

## BASE



**NOTICE:** All parts offered by American Holt are manufactured by or for American Holt and not by or for the Original Equipment Manufacturer. Part numbers shown that are those of the Original Equipment Manufacturer, if any, are used for reference purposes only. American Holt is an independent supplier of quality replacement parts having no affiliation with any Original Equipment Manufacturer. All prices are subject to change without notice. Copyright ©2020 American Holt Corp. All rights reserved.



IN-STOCK AND READY TO SHIP.

\*\* Made to Order

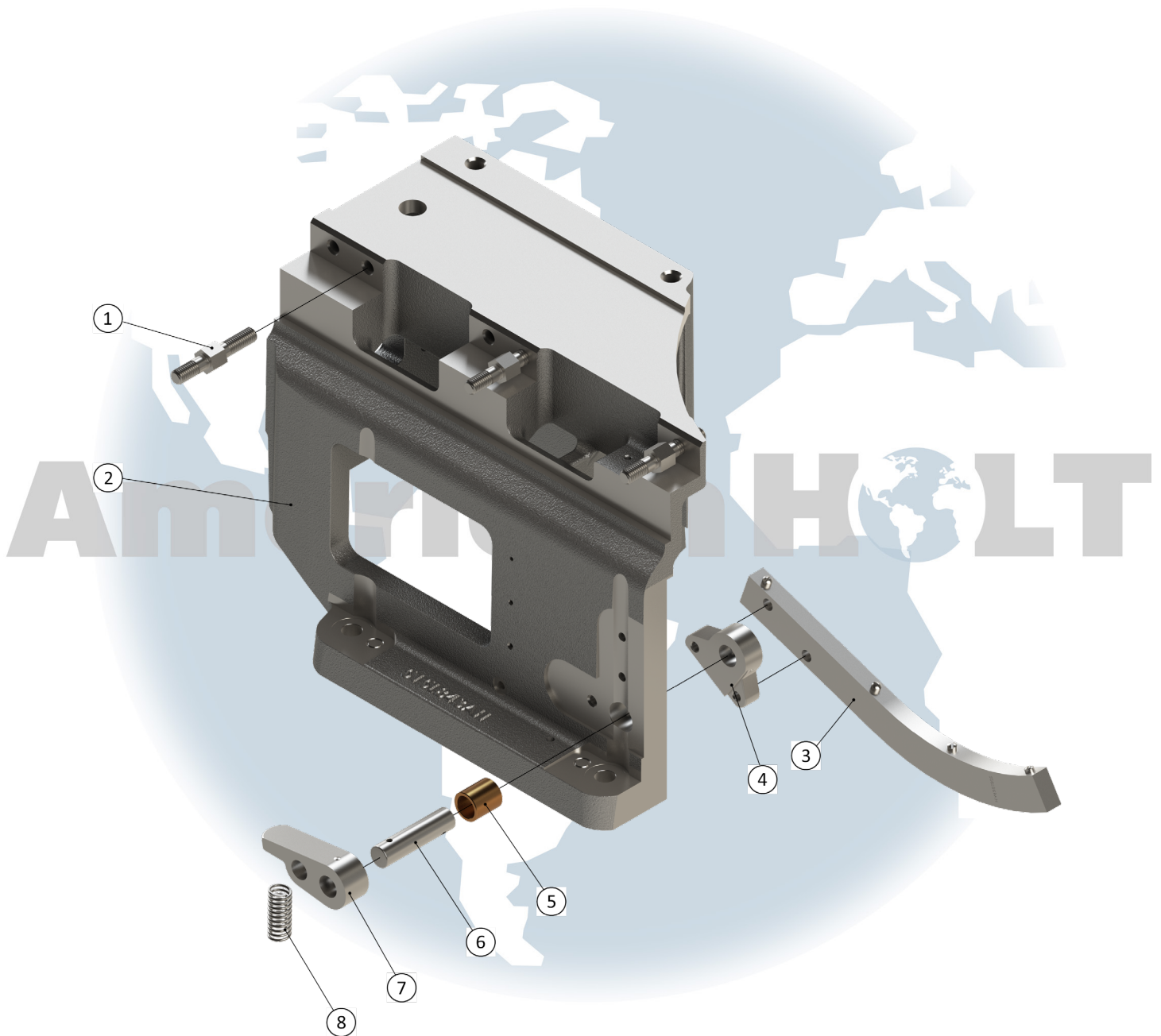
ITEM NO.	PART NO.	DESCRIPTION	QTY
1	1L844AH	Column (INCLUDES HARDWARE)	3
1.1	54L826AH	Threaded Insert	3
1.2	6L817AH	Snap Ring 3.4375	3
2	1L843AH	Base (INCLUDES HARDWARE)	1
2.1	34L614AH (NOT SHOWN)	Tube Clip	1
N/A	35L614AH	Tube Clip	5
3	*5L817AH	Column Retainer	3
4	Hex HD Cap Screw 0.6250-11 X 1.5000	Screw	9
5	80L815AH	V-Ring Lower Turret Guard	1
N/A	372L854AH	Lower Turret Seal Clamp	1
6	389L854AH	Lower Turret Guard (INCLUDES HARDWARE)	1
6.1	74L254AH	Seam Setting Plate	1
7	Hex HD Cap Screw 0.2500-20 X 0.5000	Screw	4
8	*1L846AH	Junction Box Cover	1
9	2L843AH	Base Leg 36" Feed Line	4
N/A	1L826AH	Base Leg Adjusting Screw	4
N/A	1L814AH	Gear Lubricator	1
N/A	53L814AH	Gear Lubricator	1
N/A	33L854AH	Motor Base Bracket Closure	1

**FOR MORE INFORMATION, CONTACT AMERICAN HOLT AT:**  
781-440-9993 • sales@americanholt.com • www.americanholt.com

# 100L Seamer

AFTER MARKET PARTS FOR:

## CAN FEED TABLE



**NOTICE:** All parts offered by American Holt are manufactured by or for American Holt and not by or for the Original Equipment Manufacturer. Part numbers shown that are those of the Original Equipment Manufacturer, if any, are used for reference purposes only. American Holt is an independent supplier of quality replacement parts having no affiliation with any Original Equipment Manufacturer. All prices are subject to change without notice. Copyright ©2020 American Holt Corp. All rights reserved.

IN-STOCK AND READY TO SHIP.

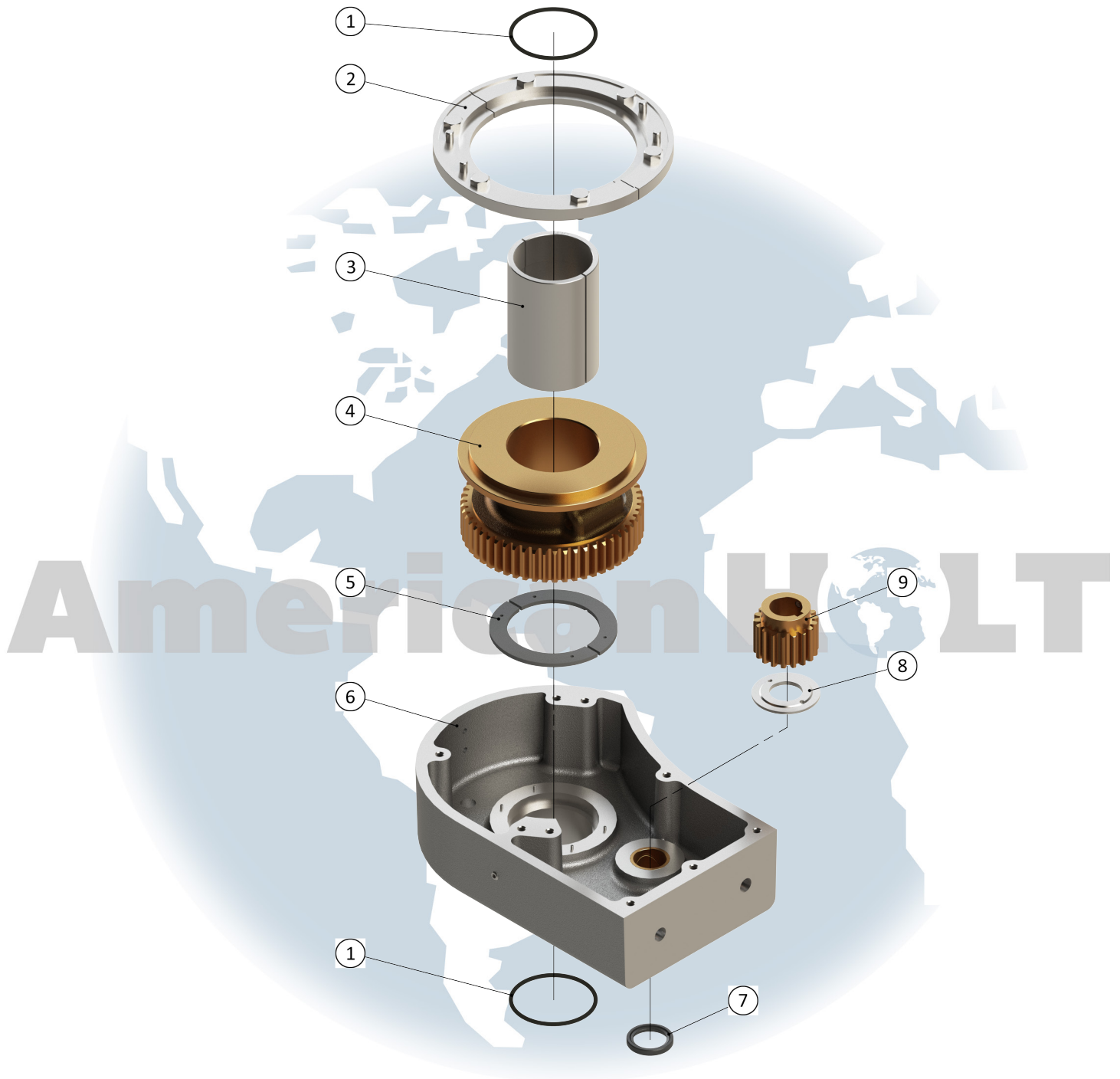
ITEM NO.	PART NO.	DESCRIPTION	QTY
N/A	710L869AH	Spacer Strip	1
N/A	128L869AH	Feed Chain Track Wear Strip	1
N/A	29L869AH	Feed Chain Track	1
1	2L826AH	Inlet Rail Bracket Screw	1
2	515L843AH	Feed Table (INCLUDES HARDWARE)	1
N/A	235L843AH	Inlet Rail Bracket	1
N/A	9L854AH	Feed Chain Guard	1
N/A	267L854AH	Feed Table Opening Door	1
N/A	14P154AH	Knob	1
N/A	590L854AH	Feed Chain Cover Strip	1
3	508L869AH	Return Chain Guide (INCLUDES HARDWARE)	1
	515L869AH (NOT SHOWN)	Return Chain Guide Wear Strip	1
4	132L869AH	Return Chain Guide Lever	1
5	149L816AH	Oilite Bushing 0.7500 X 1.0000 X 1.2500	1
6	32L844AH	Chain Guide Lever Shaft	1
7	131L869AH	Return Chain Spring Lever	1
8	12L840AH	Return Chain Spring	1

**FOR MORE INFORMATION, CONTACT AMERICAN HOLT AT:**  
781-440-9993 • sales@americanholt.com • www.americanholt.com

# 100L Seamer

AFTER MARKET PARTS FOR:

## TABLE UNIT



**NOTICE:** All parts offered by American Holt are manufactured by or for American Holt and not by or for the Original Equipment Manufacturer. Part numbers shown that are those of the Original Equipment Manufacturer, if any, are used for reference purposes only. American Holt is an independent supplier of quality replacement parts having no affiliation with any Original Equipment Manufacturer. All prices are subject to change without notice. Copyright ©2020 American Holt Corp. All rights reserved.

IN-STOCK AND READY TO SHIP.

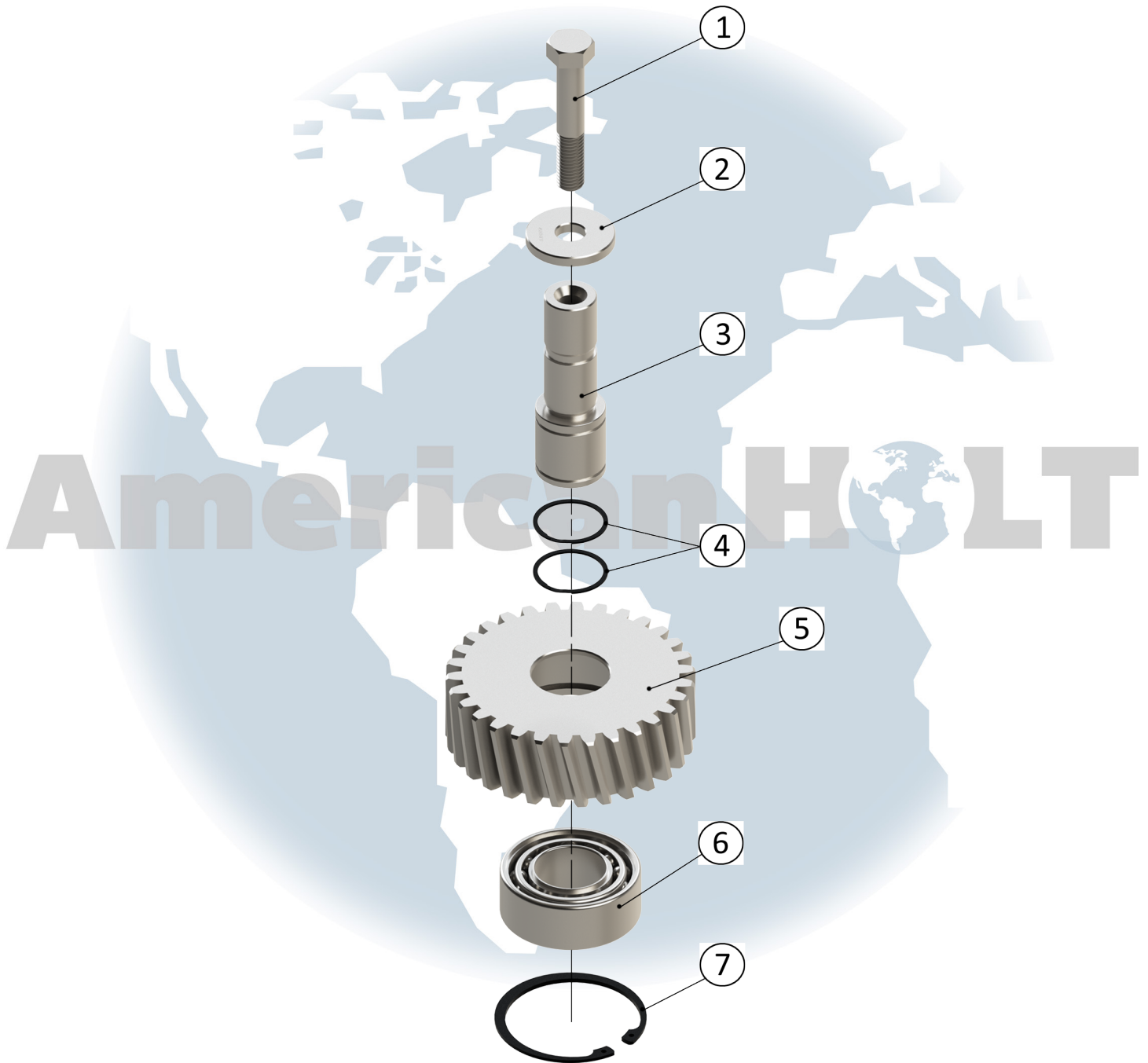
ITEM NO.	PART NO.	DESCRIPTION	QTY
1	7L815AH	O-Ring 3.500 X 3.875 X 0.312	2
N/A	33L853AH	Discharge Turret Spacer	1
N/A	8L853AH	Discharge Turret Collar	1
2	7L817AH	Discharge Turret Clamp Ring (INCLUDES HARDWARE)	1
3	10L816AH	Discharge Gear Bearing	1
N/A	10L854AH	Discharge Table Shield Ring	1
N/A	L869AH	Discharge Table Wear Plate	2
4	14L823AH	Discharge Gear - Split 54T 7P (INCLUDES HARDWARE)	1
5	11L816AH	Thrust Washer 4.0313 X 5.5000 X 0.1875	1
6	5L843AH	Discharge Table (INCLUDES HARDWARE)	1
6.1	5L843AH-BUSHIN- GAH	Bronze Bushing 1.4375 X 1.7500 X 3.0000 #1 Groove	1
7	11L815AH	Oil Seal 1.4375 X 2.0625 X 0.3125	1
8	226L816AH	Thrust Washer	1
9	190L823AH	Discharge Pinion Gear 18T 7P (INCLUDES HARDWARE)	1

**FOR MORE INFORMATION, CONTACT AMERICAN HOLT AT:**  
781-440-9993 • sales@americanholt.com • www.americanholt.com

# 100L Seamer

AFTER MARKET PARTS FOR:

## BASE DISCHARGE IDLER GEAR



**NOTICE:** All parts offered by American Holt are manufactured by or for American Holt and not by or for the Original Equipment Manufacturer. Part numbers shown that are those of the Original Equipment Manufacturer, if any, are used for reference purposes only. American Holt is an independent supplier of quality replacement parts having no affiliation with any Original Equipment Manufacturer. All prices are subject to change without notice. Copyright ©2020 American Holt Corp. All rights reserved.

IN-STOCK AND READY TO SHIP.

\* Item made-to-order

ITEM NO.	PART NO.	DESCRIPTION	QTY
1	Hex HD Cap Screw 0.6250-11 X 3.5000	Screw	1
2	45L616AH	Washer 0.65 X 2.00 X 0.31	1
3	4L844AH	Discharge Idler Gear Stud	1
4	2L817AH	Snap Ring 1.562 Shaft	2
5	8L823AH	Discharge Idler Gear 30T 6P LH	1
6	9L616AH	Ball Bearing 40 X 80 X 30.2	1
7	36L617AH	Retaining Ring 3.156 Bore	1
N/A	4L854AH	Discharge Idler Gear Bearing Cover	1
N/A	Hex HD Cap Screw 0.2500-20 X 0.500	Screw	4

**FOR MORE INFORMATION, CONTACT AMERICAN HOLT AT:**  
781-440-9993 • sales@americanholt.com • www.americanholt.com



# 100L Seamer

AFTER MARKET PARTS FOR:

## BASE DISCHARGE INTERMEDIATE



**NOTICE:** All parts offered by American Holt are manufactured by or for American Holt and not by or for the Original Equipment Manufacturer. Part numbers shown that are those of the Original Equipment Manufacturer, if any, are used for reference purposes only. American Holt is an independent supplier of quality replacement parts having no affiliation with any Original Equipment Manufacturer. All prices are subject to change without notice. Copyright ©2020 American Holt Corp. All rights reserved.

IN-STOCK AND READY TO SHIP.

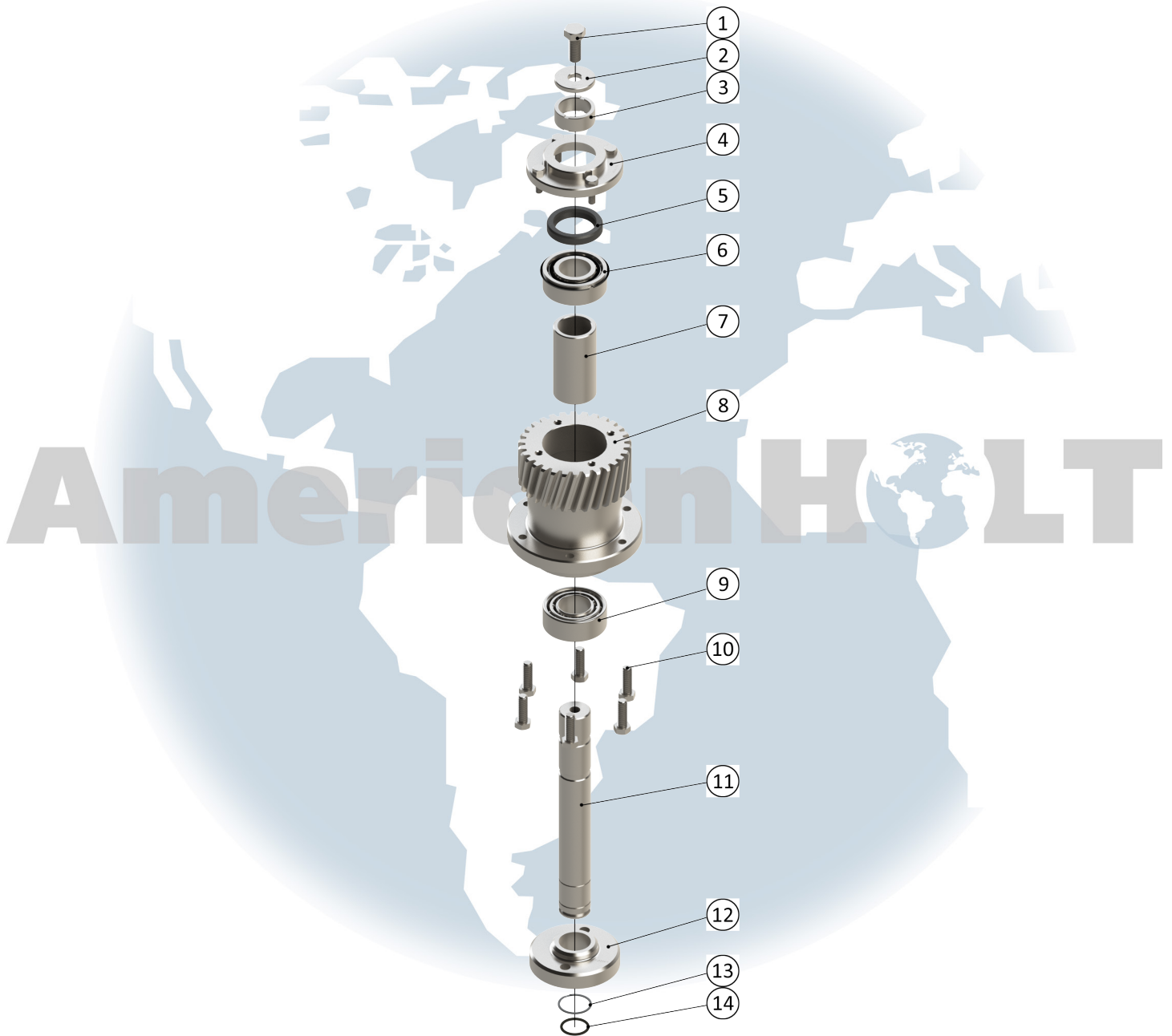
ITEM NO.	PART NO.	DESCRIPTION	QTY
1	4L617AH	Retaining Ring - Nickel Plated 1.3750 Shaft	2
2	43L853AH	Discharge Intermediate Shaft Collar 1.4375 (INCLUDES HARDWARE)	1
3	177L616AH	Thrust Washer 1.4375	1
4	2P147AH	Key 0.375 SQ X 2.437	2
5	5L844AH	Discharge Intermediate Shaft	1
6	9L823AH	Discharge Intermediate Gear 30T 6P RH	1

**FOR MORE INFORMATION, CONTACT AMERICAN HOLT AT:**  
781-440-9993 • [sales@americanholt.com](mailto:sales@americanholt.com) • [www.americanholt.com](http://www.americanholt.com)

# 100L Seamer

AFTER MARKET PARTS FOR:

## BASE INTERMEDIATE GEAR



**NOTICE:** All parts offered by American Holt are manufactured by or for American Holt and not by or for the Original Equipment Manufacturer. Part numbers shown that are those of the Original Equipment Manufacturer, if any, are used for reference purposes only. American Holt is an independent supplier of quality replacement parts having no affiliation with any Original Equipment Manufacturer. All prices are subject to change without notice. Copyright ©2020 American Holt Corp. All rights reserved.

IN-STOCK AND READY TO SHIP.

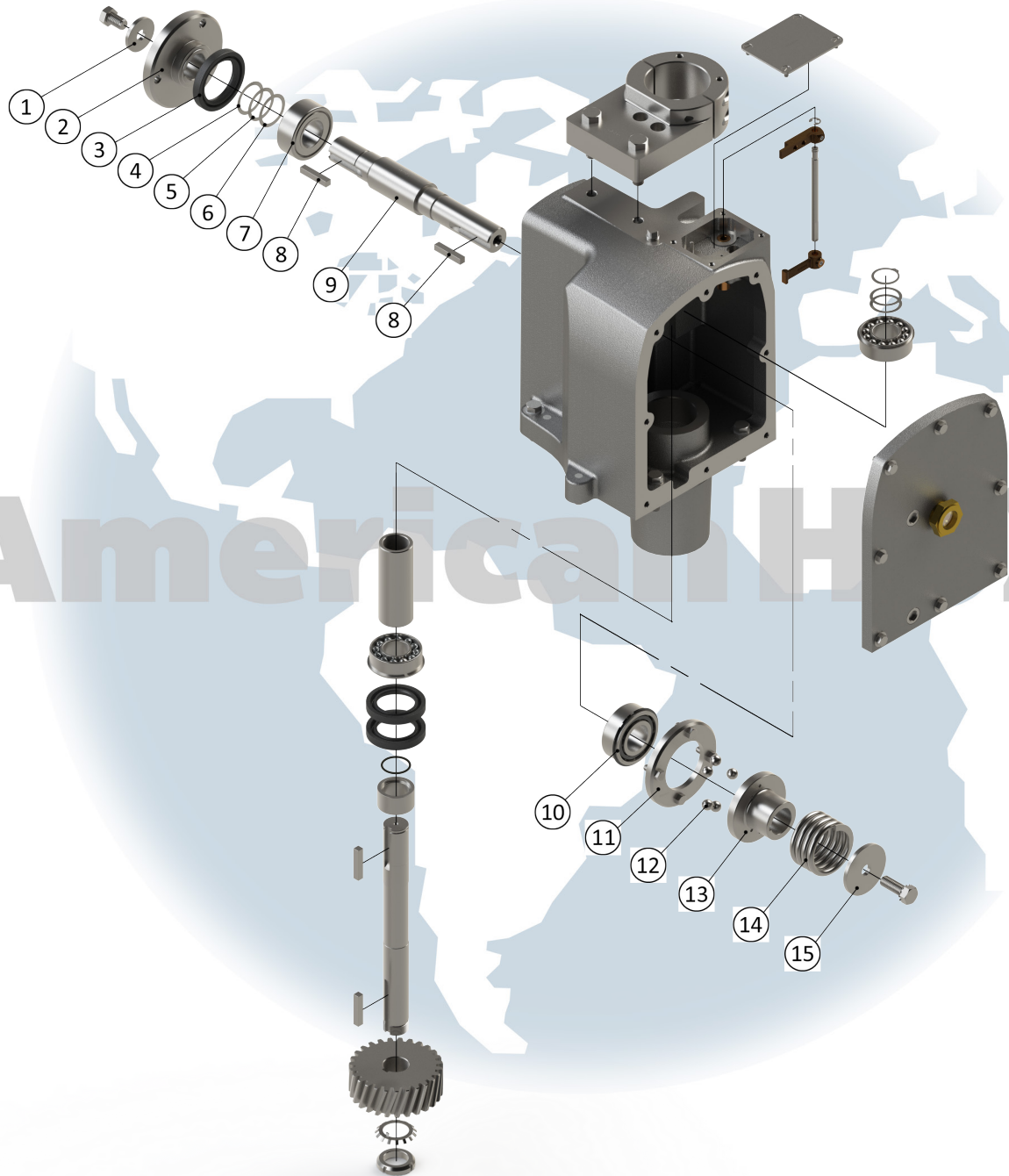
ITEM NO.	PART NO.	DESCRIPTION	QTY
1	Hex HD Cap Screw 0.6250-11 X 1.5000	Screw	1
2	45L616AH	Washer 0.65 X 2.00 X 0.31	1
3	1L853AH	Intermediate Pinion Seal Sleeve	1
4	3L817AH	Intermediate Pinion Bearing Retainer (INCLUDES HARDWARE)	1
5	2L615AH	Oil Seal 2.00 X 2.75 X 0.50	1
6	6L816AH	Ball Bearing 40 X 80 X 30.2	1
7	6L853AH	Spacer	1
8	5L823AH	Intermediate Pinion	1
9	9L616AH	Ball Bearing 40 X 80 X 30.2	1
N/A	109L823AH	Lower Drive Intermediate Gear 100T 10P LH	1
N/A	17L823AH	Filler Drive Bevel Gear	1
10	Socket HD Cap Screw 0.5000-13 X 1.5000	Screw	6
11	3L844AH	Intermediate Pinion Stud	1
12	5L853AH	Intermediate Pinion Stud Flange	1
13	2L817AH	Snap Ring 1.562 Shaft	1
14	12L615AH	O-Ring 1.1875 X 1.4375 X 0.1250	1

**FOR MORE INFORMATION, CONTACT AMERICAN HOLT AT:**  
781-440-9993 • sales@americanholt.com • www.americanholt.com

# 100L Seamer

AFTER MARKET PARTS FOR:

## CAN FEED & DISCHARGE - PART 1



**NOTICE:** All parts offered by American Holt are manufactured by or for American Holt and not by or for the Original Equipment Manufacturer. Part numbers shown that are those of the Original Equipment Manufacturer, if any, are used for reference purposes only. American Holt is an independent supplier of quality replacement parts having no affiliation with any Original Equipment Manufacturer. All prices are subject to change without notice. Copyright ©2020 American Holt Corp. All rights reserved.

IN-STOCK AND READY TO SHIP.

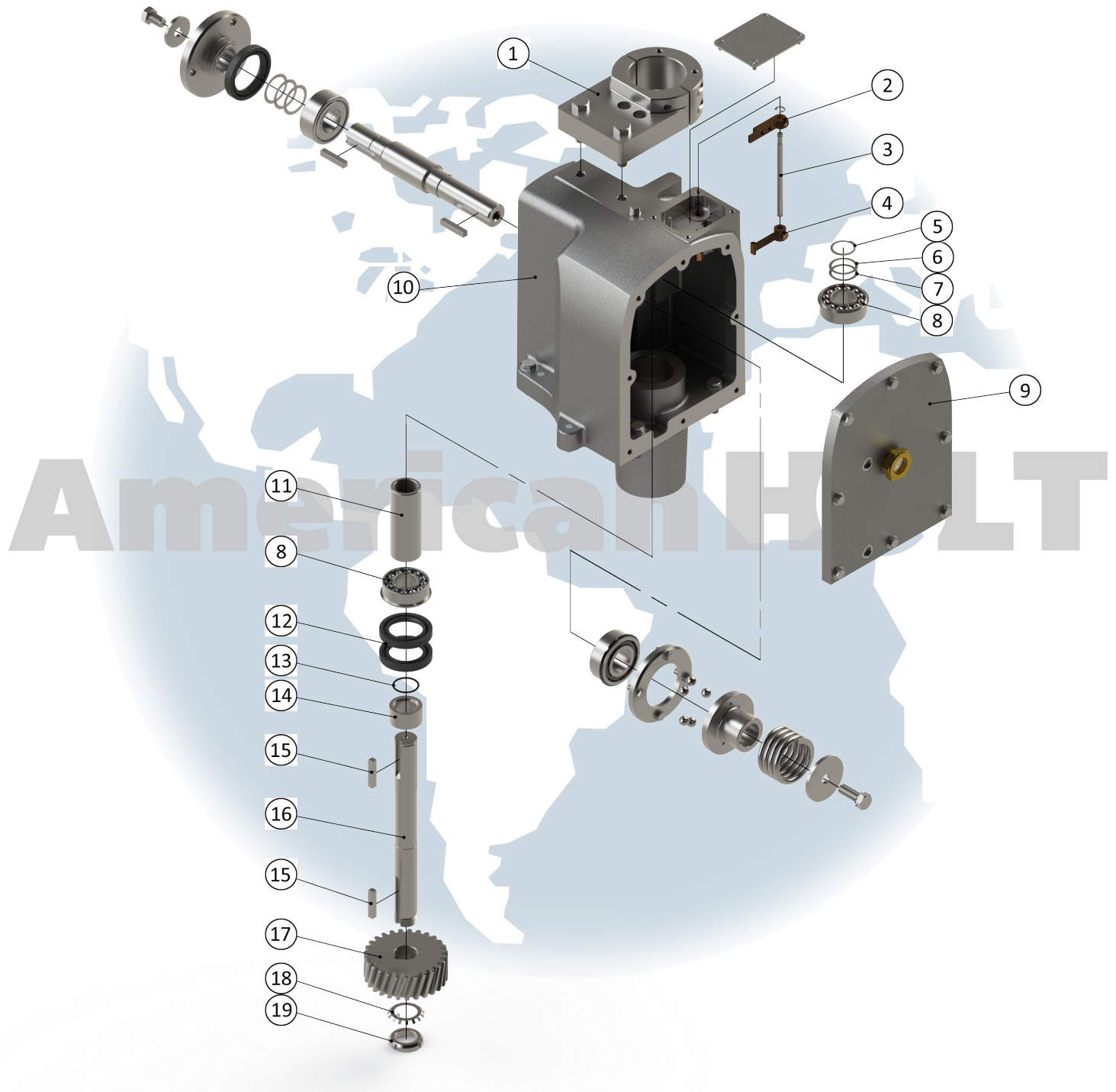
ITEM NO.	PART NO.	DESCRIPTION	QTY
1	45L616AH	Washer 0.65 X 2.00 X 0.31	1
N/A	30L824AH	Feed Sprocket	1
2	2L824AH	Feed Sprocket Hub	1
3	2L815AH	Oil Seal 2.500 X 3.500 X 0.500	1
4	52L816-3AH	Shim 0.003	2
5	52L816-5AH	Shim 0.005	2
6	52L816-10AH	Shim 0.010	2
7	9L616AH	Ball Bearing 1.5748 X 3.1496 X 1.1875	1
8	2L647AH	Key 0.3750 SQ X 1.9687	2
9	7L844AH	Feed Sprocket Shaft (INCLUDES HARDWARE)	1
10	6L816AH	Ball Bearing 1.5748 X 3.1496 X 1.1875	1
11	8L817AH	Feed Bevel Gear Bearing Retainer (INCLUDES HARDWARE)	1
N/A	112L823AH	Feed Bevel Gear 56T 8P	1
12	48L616AH	Steel Ball 0.62" (HARDENED)	5
13	1L897AH	Feed Safety Clutch Hub	1
14	3L840AH	Compression Spring	1
15	12L816AH	Washer 0.6562 X 3.0000 X 0.2500	1

**FOR MORE INFORMATION, CONTACT AMERICAN HOLT AT:**  
781-440-9993 • sales@americanholt.com • www.americanholt.com

# 100L Seamer

AFTER MARKET PARTS FOR:

## CAN FEED & DISCHARGE - PART 2



**NOTICE:** All parts offered by American Holt are manufactured by or for American Holt and not by or for the Original Equipment Manufacturer. Part numbers shown that are those of the Original Equipment Manufacturer, if any, are used for reference purposes only. American Holt is an independent supplier of quality replacement parts having no affiliation with any Original Equipment Manufacturer. All prices are subject to change without notice. Copyright ©2020 American Holt Corp. All rights reserved.



IN-STOCK AND READY TO SHIP.

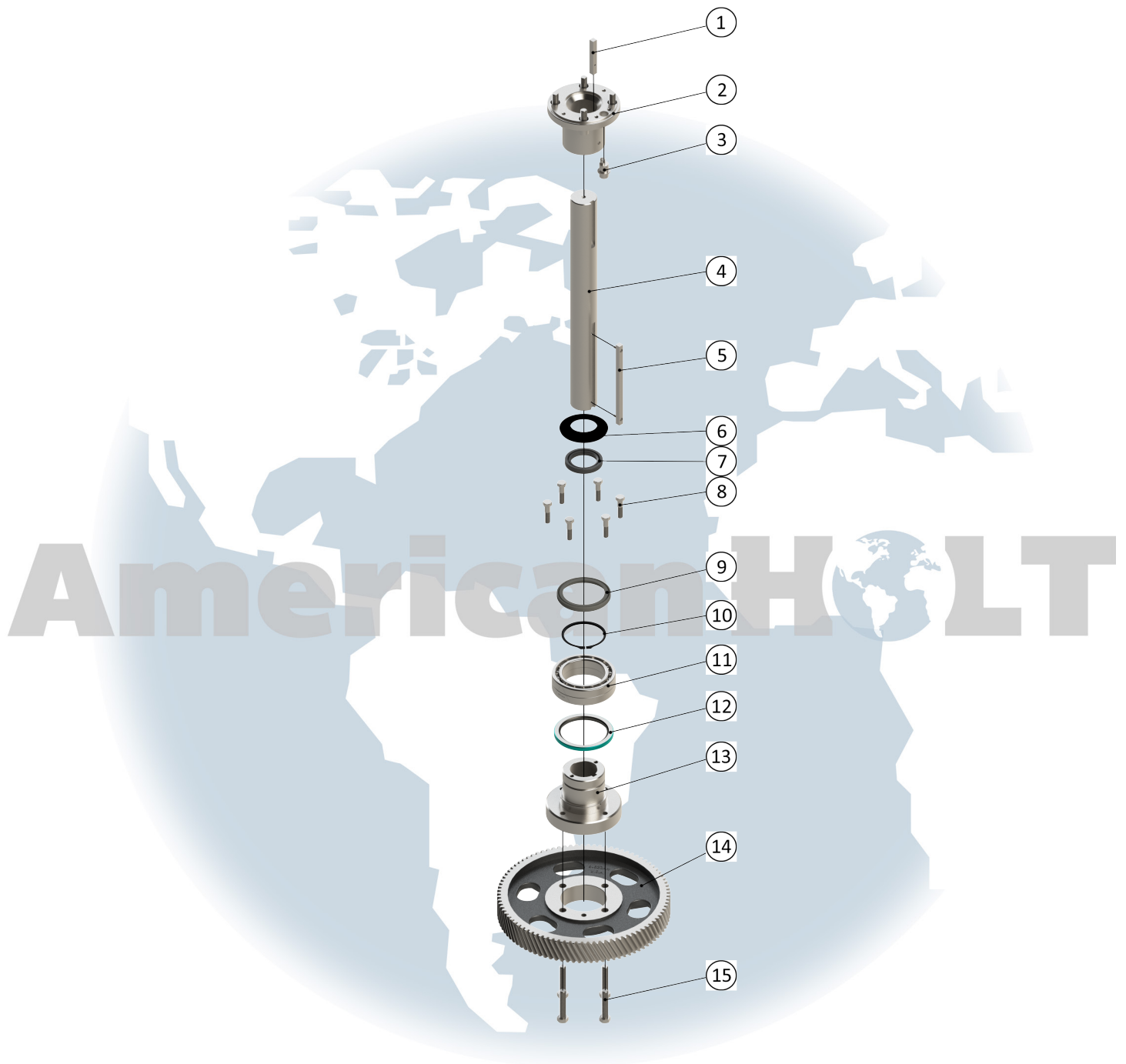
ITEM NO.	PART NO.	DESCRIPTION	QTY
1	6L843AH	Column Support Bracket (INCLUDES HARDWARE)	1
2	3L846AH	Switch Spring Lever (INCLUDES HARDWARE)	1
3	8L844AH	Switch Lever Shaft	1
3.1	27L617AH	Retaining Ring 0.375 Shaft	1
4	2L846AH	Switch Lever (INCLUDES HARDWARE)	1
5	9P917AH	Snap Ring 1.3750	1
N/A	111L823AH	Feed Bevel Pinion 24T 8P	1
6	114L816-3AH	Shim 0.003	2
7	114L816-5AH	Shim 0.005	2
8	8L816AH	Ball Bearing 1.3780 X 2.8346 X 1.0630	2
9	6L854AH	Feed Drive Case Cover (INCLUDES HARDWARE)	1
9.1	115L614AH	Liquid Level Sight Plug 1.250 P.T.F.	1
10	3L843AH	Feed Drive Case (INCLUDES HARDWARE)	1
10.1	13L816AH	Switch Lever Shaft Bushing 0.7500 X 3.1875	1
N/A	205L853AH	Feed Drive Case Spacer	1
11	9L853AH	Spacer	1
12	6L815AH	Oil Seal 3.187 X 2.000 X 0.437	2
13	62L815AH	O-Ring 0.3750 X 0.6250 X 0.1250	1
14	10L853AH	Sleeve	1
15	2L647AH	Key 0.3750 SQ X 1.9687	2
16	6L844AH	Feed Drive Shaft	1
17	10L823AH	Feed Drive Gear 6P 27T RH	1
18	4P116AH	Bearing Lockwasher 35MM	1
19	3P116AH	Bearing Locknut	1

**FOR MORE INFORMATION, CONTACT AMERICAN HOLT AT:**  
781-440-9993 • sales@americanholt.com • www.americanholt.com

# 100L Seamer

AFTER MARKET PARTS FOR:

## FEED TURRET GEAR



**NOTICE:** All parts offered by American Holt are manufactured by or for American Holt and not by or for the Original Equipment Manufacturer. Part numbers shown that are those of the Original Equipment Manufacturer, if any, are used for reference purposes only. American Holt is an independent supplier of quality replacement parts having no affiliation with any Original Equipment Manufacturer. All prices are subject to change without notice. Copyright ©2020 American Holt Corp. All rights reserved.

IN-STOCK AND READY TO SHIP.

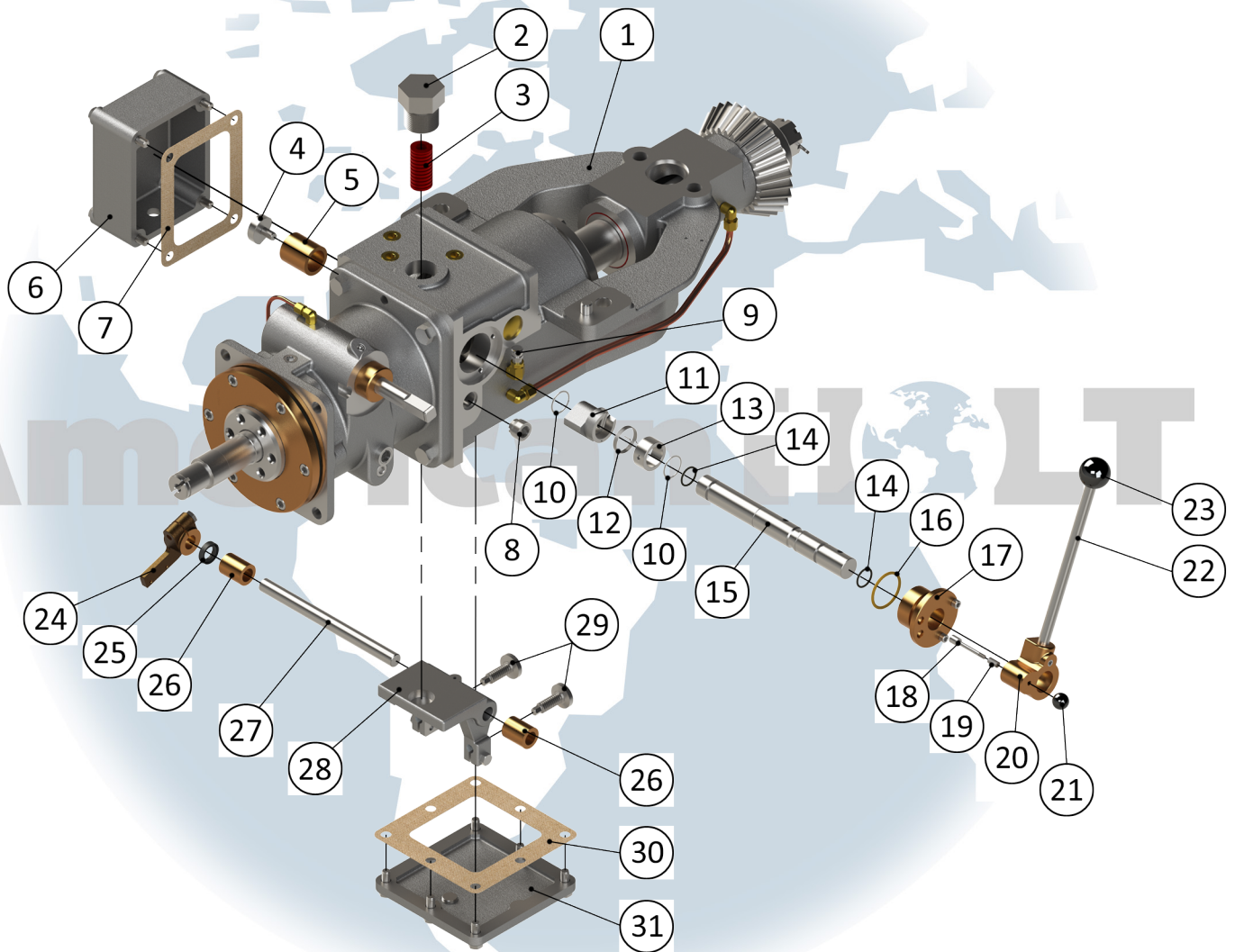
ITEM NO.	PART NO.	DESCRIPTION	QTY
1	4L847AH	Key	1
2	1L863AH	Feed Turret Hub (INCLUDES HARDWARE)	1
3	4L828AH	Feed Turret Eccentric Adjustment Pin	1
4	2L844AH	Feed Turret Shaft	1
5	1L847AH	Key	1
6	27L815AH	Slinger 2.5000 Shaft	1
7	2L815AH	Oil Seal 2.500 X 3.500 X 0.500	1
8	Hex HD Cap Screw 0.5000-13 X 2.0000	Screw	6
N/A	276L854AH	Name Plate	1
N/A	100L817AH	Feed Turret Gear Bearing Retainer	1
9	3L815AH	Oil Seal	1
10	5P917AH	Snap Ring 3.937 Shaft	1
11	53P916AH	Ball Bearing 3.9370 X 5.9055 X 1.7323	1
12	4L815AH	Oil Seal	1
13	7L823AH	Feed Turret Gear Hub	1
14	6L823AH	Feed Turret Gear 90T 6P LH	1
15	Hex HD Cap Screw 0.6250-11 X 3.0000	Screw	4

**FOR MORE INFORMATION, CONTACT AMERICAN HOLT AT:**  
781-440-9993 • sales@americanholt.com • www.americanholt.com

# 100L Seamer

AFTER MARKET PARTS FOR:

## FILLER DRIVE 1



**NOTICE:** All parts offered by American Holt are manufactured by or for American Holt and not by or for the Original Equipment Manufacturer. Part numbers shown that are those of the Original Equipment Manufacturer, if any, are used for reference purposes only. American Holt is an independent supplier of quality replacement parts having no affiliation with any Original Equipment Manufacturer. All prices are subject to change without notice. Copyright ©2020 American Holt Corp. All rights reserved.

IN-STOCK AND READY TO SHIP.

ITEM NO.	PART NO.	DESCRIPTION	QTY
1	193L843AH	Filler Drive Bracket (HARDWARE INCLUDED)	1
2	40L826AH	Filler Drive Spring Adjustment Screw	1
3	18L840AH	Filler Drive Spring	1
	53L816-5AH (NOT SHOWN)	Shim 0.005	8
	53L816-10AH (NOT SHOWN)	Shim 0.010	2
	53L816-30AH (NOT SHOWN)	Shim 0.030	4
4	45L846AH	Micro Switch Trip	1
5	43P916AH	Oilite Bearing	1
6	161L854AH	Switch Box Cover	1
N/A	70L826AH	Switch Box Cover Stud	1
7	54L815AH	Gasket	1
8	58L614AH	Oil Gauge 0.625	1
9	41L814AH	Air Vent	1
10	6P517AH	Spirolox Ring 1" Shaft	2
11	31L897AH	Filler Drive Trip Disc	1
12	22L840AH	Trip Disc Torsion Spring	1
13	117L853AH	Set Collar 1.00 X 1.38 X 0.625	1

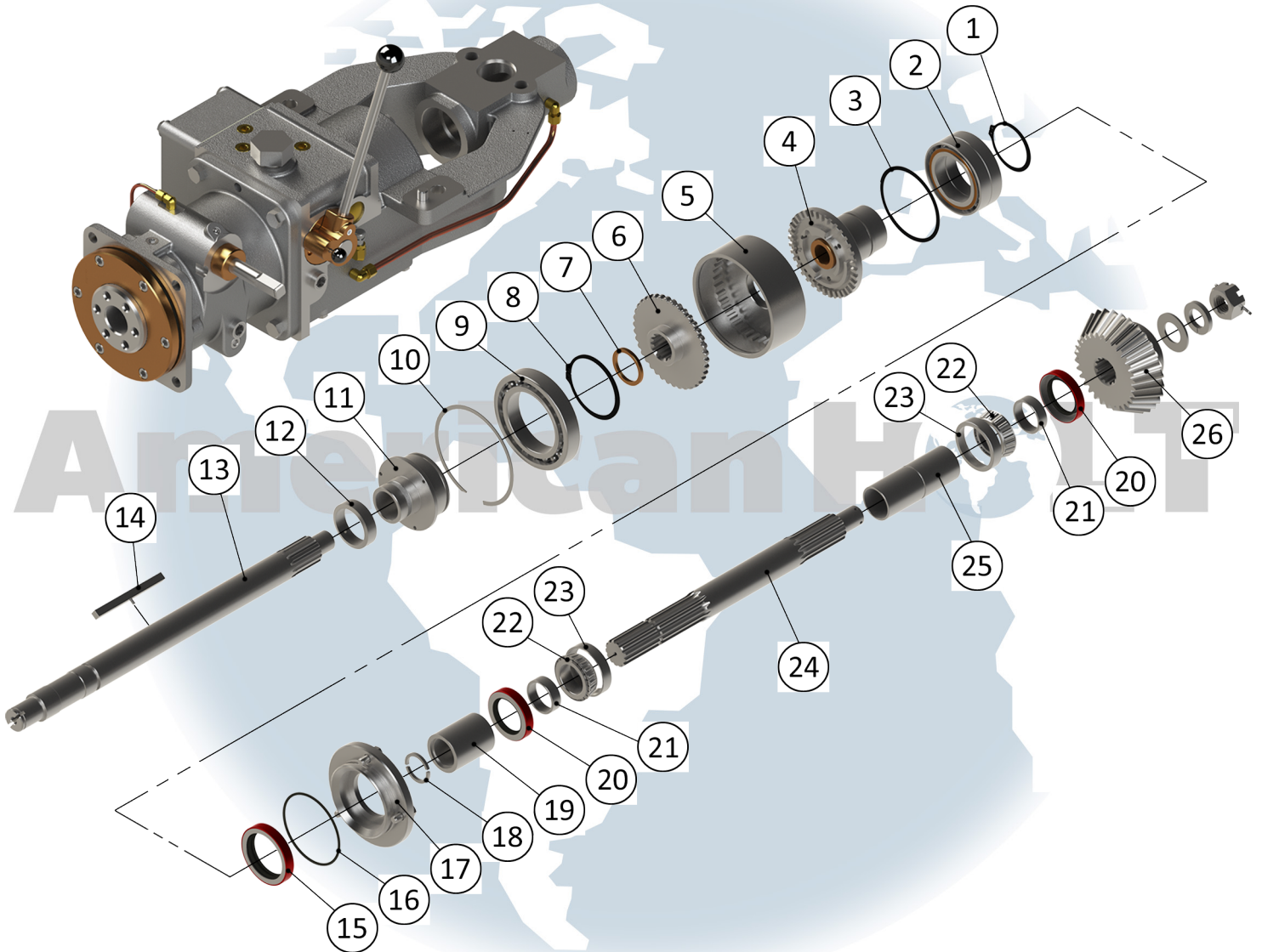
ITEM NO.	PART NO.	DESCRIPTION	QTY
14	31L815AH	O-Ring 0.7500 X 0.9375 X 0.0937	2
15	93L844AH	Filler Drive Trip Shaft (HARDWARE INCLUDED)	1
16	12H615AH	O-Ring 1.50 X 1.75 X 0.125	1
17	130L816AH	Trip Shaft Bushing	1
18	25L828AH	Locator Pin	1
19	18L640AH	Locator Pin Spring SS	1
20	102L843AH	Filler Drive Control Lever	1
21	97L616AH	Ball Handle	1
22	54L844AH	Filler Drive Trip Shaft Handle	1
23	29L854AH	Handcrank Carrier Knob	1
24	46L846AH	Micro Switch Trip Lever	1
25	43L815AH	Oil Seal	1
26	89L816AH	Bronze Bearing	2
27	53L844AH	Filler Drive Clutch Lever Shaft	1
28	11L897AH	Filler Drive Clutch Lever	1
29	39L826AH	Filler Drive Clutch Screw	2
30	53L815AH	Gasket	1
31	201L854AH	Filler Drive Bracket Acces Cover	1

**FOR MORE INFORMATION, CONTACT AMERICAN HOLT AT:**  
781-440-9993 • sales@americanholt.com • www.americanholt.com

# 100L Seamer

AFTER MARKET PARTS FOR:

## FILLER DRIVE 2



**NOTICE:** All parts offered by American Holt are manufactured by or for American Holt and not by or for the Original Equipment Manufacturer. Part numbers shown that are those of the Original Equipment Manufacturer, if any, are used for reference purposes only. American Holt is an independent supplier of quality replacement parts having no affiliation with any Original Equipment Manufacturer. All prices are subject to change without notice. Copyright ©2020 American Holt Corp. All rights reserved.

IN-STOCK AND READY TO SHIP.

ITEM NO.	PART NO.	DESCRIPTION	QTY
1	5L617AH	Retaining Ring 2.375 Shaft	1
2	88L816AH	Ball Bearing 2.3622 X 3.7402 X 1.4174	1
3	48L817AH	Snap Ring	1
4	27L897AH	Filler Drive Clutch Hub	1
4.1	98L816AH	Oilite Bushing	1
5	28L897AH	Filler Driven Clutch Hub 36T 14.5P	1
6	79L823AH	Filler Drive Intermediate Gear	1
7	128L816AH	Thrust Washer	1
8	28L617AH	Retaining Ring	1
9	126L816AH	Ball Bearing 3.1496 X 4.9213 X 0.8661	1
10	53L817AH	Retaining Ring 5.000 Bore	1
11	29L897AH	Filler Drive Pressure Hub	1
12	114L853AH	Filler Drive Pressure Hub Collar (INCLUDES HARDWARE)	1
13	89L844AH	In-Motion Timer Shaft	1
13.1	12L615AH	O-Ring 1.1875 X 1.4375 X 0.1250	1
14	20L847AH	In-Motion Timer Key (INCLUDES HARDWARE)	1
15	42L815AH	Oil Seal	1
16	41L815AH	O-Ring 3.500 X 3.750 X 0.125	1
17	56L817AH	Bearing Retainer (INCLUDES HARDWARE)	1

ITEM NO.	PART NO.	DESCRIPTION	QTY
18	60L817AH	Filler Drive Shaft Retainer	2
19	136L853AH	Filler Drive Intermediate Shaft Collar	1
20	61L815AH	Oil Seal 1.750 X 2.565 X 0.500	2
21	112L853AH	Spacer 1.500 X 1.750 X 0.562	2
22	124L816AH	Tapered Roller Bearing Cone 1.500 X 2.5625 X 0.710	2
23	125L816AH	Tapered Roller Bearing Cup	2
24	94L844AH	Filler Drive Intermediate Shaft (INCLUDES HARDWARE)	1
24.1	134L816AH	Hex Slotted Nut 1-8 NC	1
25	115L853AH	Spacer 1-17/32 X 1.750 X 4.703	1
	129L816-3AH (NOT SHOWN)	Shim 0.003	4
	129L816-5AH (NOT SHOWN)	Shim 0.005	4
	129L816-10AH (NOT SHOWN)	Shim 0.010	4
	129L816-32AH (NOT SHOWN)	Shim 0.032	2
26	82L823AH	Filler Drive Pinion	1

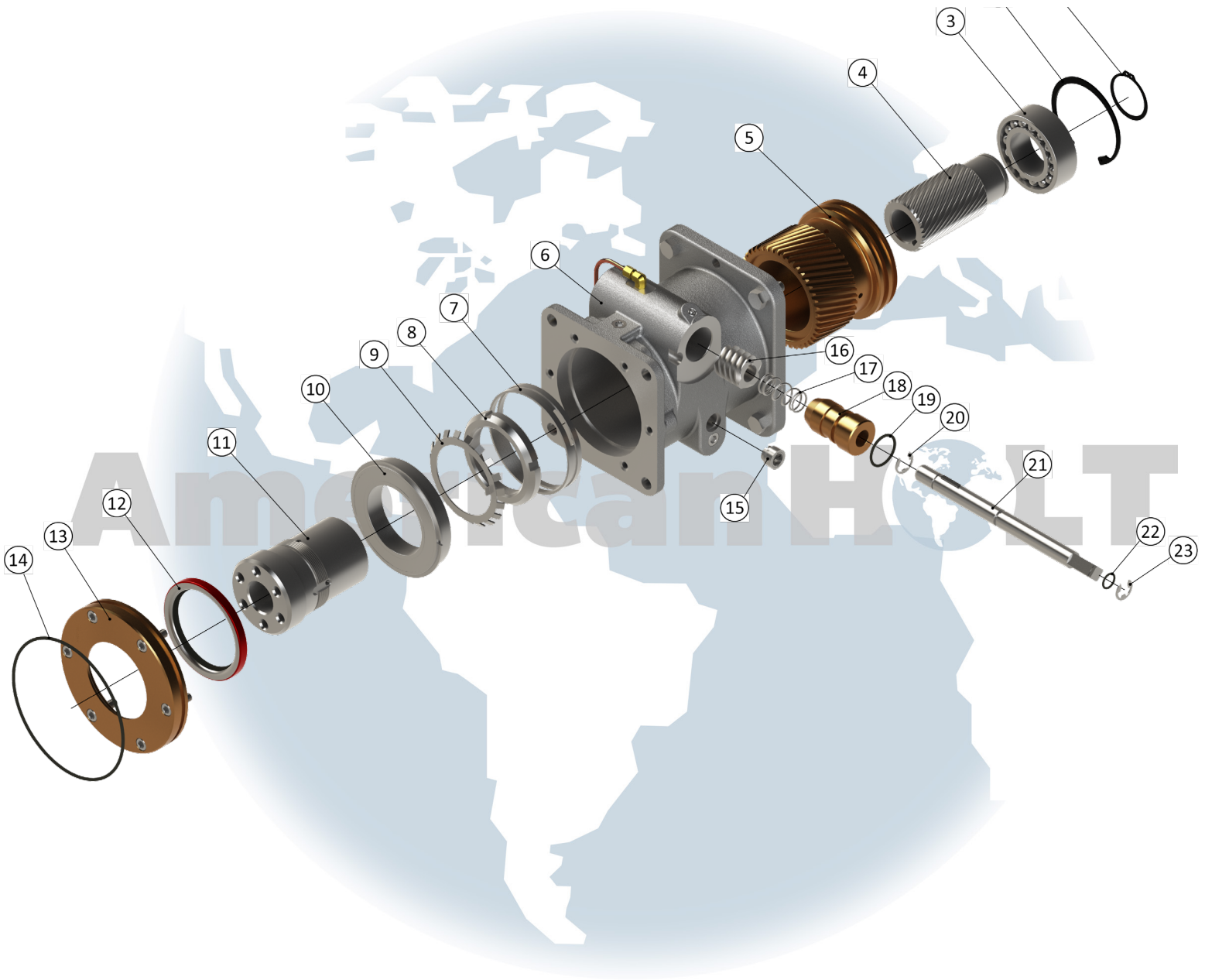
**FOR MORE INFORMATION, CONTACT AMERICAN HOLT AT:**  
781-440-9993 • sales@americanholt.com • www.americanholt.com



# 100L Seamer

AFTER MARKET PARTS FOR:

## IN-MOTION TIMER



**NOTICE:** All parts offered by American Holt are manufactured by or for American Holt and not by or for the Original Equipment Manufacturer. Part numbers shown that are those of the Original Equipment Manufacturer, if any, are used for reference purposes only. American Holt is an independent supplier of quality replacement parts having no affiliation with any Original Equipment Manufacturer. All prices are subject to change without notice. Copyright ©2020 American Holt Corp. All rights reserved.

IN-STOCK AND READY TO SHIP.

\*\* Made to Order

ITEM NO.	PART NO.	DESCRIPTION	QTY
1	29L617AH	Retaining Ring 2" Shaft	1
2	9L617AH	Retaining Ring 3.544 Bore	1
3	100L616AH	Ball Bearing 1.9685 X 3.5433 X 1.1875	1
4	51L623AH	Drive Sleeve 32T 0.5000P 30deg LH	1
5	50L623AH	Adjusting Sleeve 45T 10.5P 17deg 45' RH	1
6	71L643AH	In-Motion Timer Housing (INCLUDES HARDWARE)	1
7	265L653AH	Spacer 4.50 X 4.71 X 0.75	1
8	158L816AH	Bearing Locknut	1
9	159L816AH	Lockwasher	1
10	99L616AH	Ball Bearing 3.1496 X 4.9213 X 0.8660	1
11	140L623AH	Drive Flange - LH	1
12	13L615AH	Oil Seal 3.50 X 4.50 X 0.43	1
13	30L617AH	Bearing Retainer (INCLUDES HARDWARE)	1

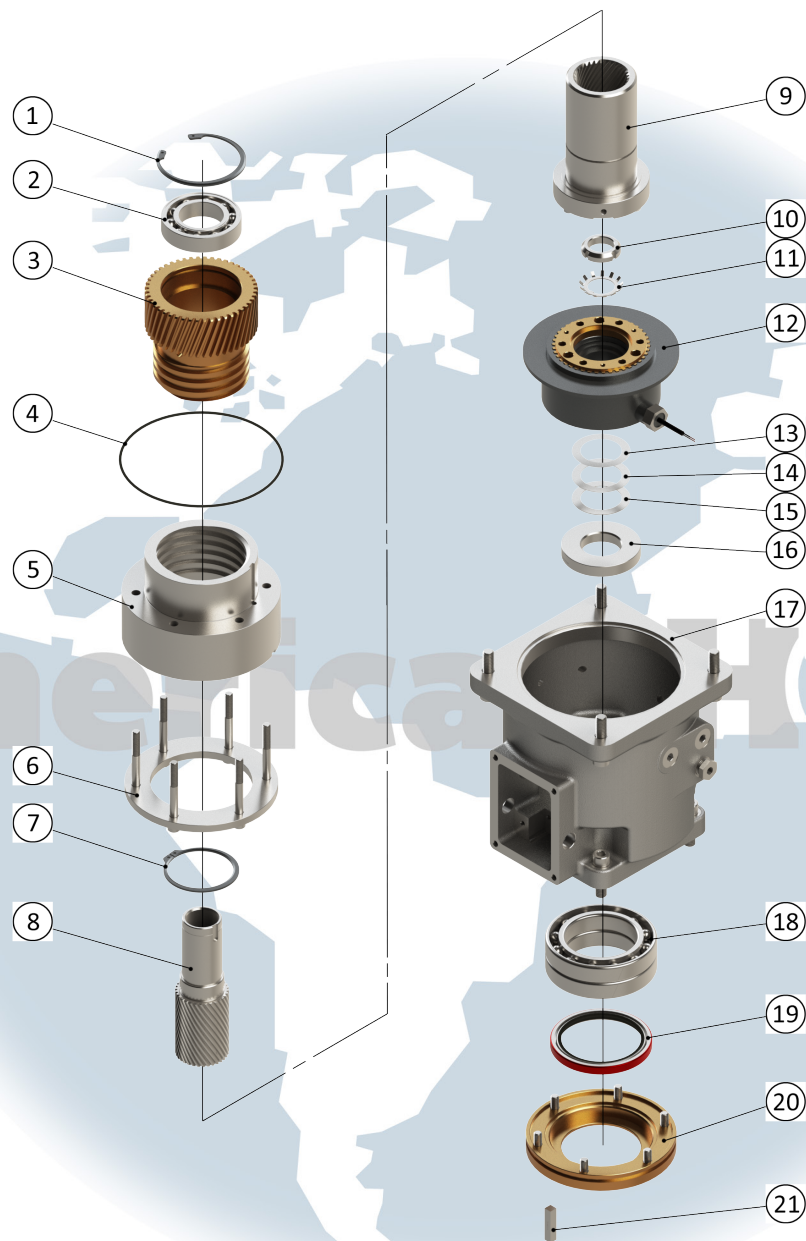
ITEM NO.	PART NO.	DESCRIPTION	QTY
14	29L815AH	O-Ring 6.250 X 6.500 X 0.125	1
15	58L614AH	Oil Gauge 0.6250	1
16	53L623AH	Worm 4THD 10P RH	1
17	3P140AH	Knockout Rod Spring	1
18	359L616AH	Worm Shaft Bearing	1
19	97L815AH	O-Ring 1.25 X1.50 X 0.12	1
20	2L617AH	Retaining Ring - Nickel Plated 0.750 Shaft	1
21	*159L844AH	Worm Shaft (INCLUDES 608 #13 WOODRUFF KEY)	1
22	11L615AH	O-Ring 0.5625 X 0.7500 X 0.0937	1
	12L653AH (NOT SHOWN)	Crank Handle	1
23	1L617AH	Retaining Ring - Nickel Plated	1

**FOR MORE INFORMATION, CONTACT AMERICAN HOLT AT:**  
781-440-9993 • sales@americanholt.com • www.americanholt.com

# 100L Seamer

AFTER MARKET PARTS FOR:

## ELECTRIC TOOTH CLUTCH



**NOTICE:** All parts offered by American Holt are manufactured by or for American Holt and not by or for the Original Equipment Manufacturer. Part numbers shown that are those of the Original Equipment Manufacturer, if any, are used for reference purposes only. American Holt is an independent supplier of quality replacement parts having no affiliation with any Original Equipment Manufacturer. All prices are subject to change without notice. Copyright ©2020 American Holt Corp. All rights reserved.

IN-STOCK AND READY TO SHIP.

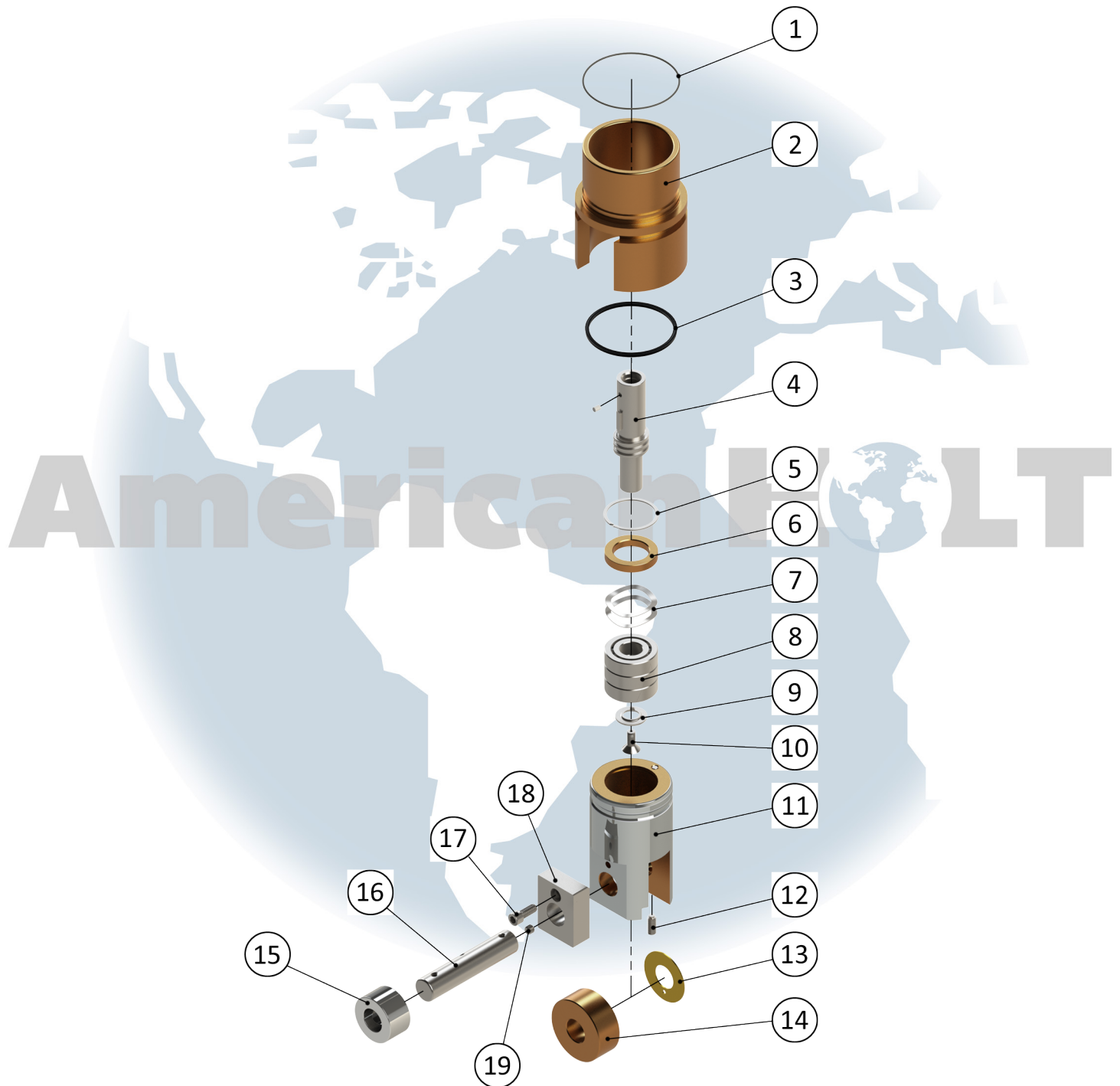
ITEM NO.	PART NO.	DESCRIPTION	QTY
1	9L617AH	Retaining Ring 3.544 Bore SS	1
2	54S816AH	Ball Bearing 50X90X20	1
3	148L823AH	Male Adjusting Sleeve	1
4	63L815AH	O-Ring 7.00 X 7.25 X 0.12	1
5	72L897AH	Female Adjusting Sleeve	1
6	88L817AH	Adjustment Sleeve Bearing Retainer (INCLUDES HARDWARE)	1
7	28L617AH	Snap Ring 3.156 Shaft	1
8	178L823AH	Inner Drive Sleeve	1
9	149L823AH	Outer Drive Sleeve (INCLUDES HARDWARE)	1
10	19L616AH	Bearing Locknut N-06	1
11	18L616AH	Bearing Lockwasher W-06	1
12	854L833AH	Tooth Clutch	1
13	183L816-3AH	Shim 0.003 Thick	1
14	183L816-10AH	Shim 0.010 Thick	2
15	183L816-30AH	Shim 0.030 Thick	1
16	262L853AH	Spacer 1.753 X 3.500 X 0.645	1
17	472L843AH	Clutch & Timer Housing (INCLUDES HARDWARE)	1
N/A	96L254AH	Belt Drive Clutch Cover	1
N/A	92L815AH	Gasket	1
18	25L416AH	Ball Bearing 80 X 125 X 44	2
19	13L615AH	Oil Seal 3.50 X 4.50 X 0.43	1
20	30L617AH	Bearing Retainer (INCLUDES HARDWARE)	1
N/A	164L844AH	Clutch Output Shaft	1
21	3L447AH	Key	1
N/A	86L897AH	Stop Clutch Body	1

**FOR MORE INFORMATION, CONTACT AMERICAN HOLT AT:**  
781-440-9993 • sales@americanholt.com • www.americanholt.com

# 100L Seamer

AFTER MARKET PARTS FOR:

## LOWER CHUCK - BOTTOM



**NOTICE:** All parts offered by American Holt are manufactured by or for American Holt and not by or for the Original Equipment Manufacturer. Part numbers shown that are those of the Original Equipment Manufacturer, if any, are used for reference purposes only. American Holt is an independent supplier of quality replacement parts having no affiliation with any Original Equipment Manufacturer. All prices are subject to change without notice. Copyright ©2020 American Holt Corp. All rights reserved.

IN-STOCK AND READY TO SHIP.

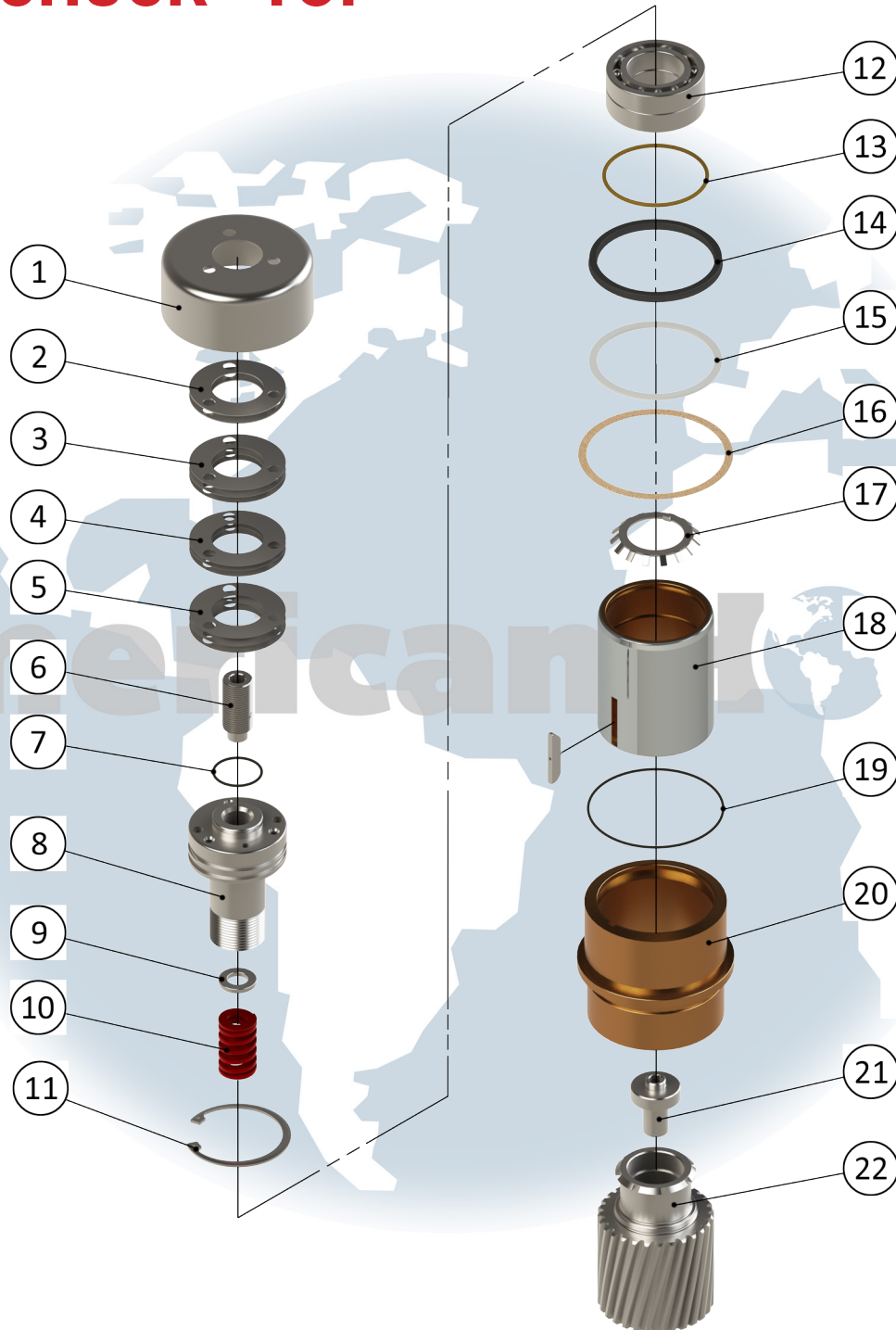
ITEM NO.	PART NO.	DESCRIPTION	QTY
1	26L815AH	O-Ring 3.250 X 0.375 X 0.0625	1
2	46L827AH	Lower Chuck Slide Bearing Bottom	1
3	71L815AH	Polypak Seal 2.875 X 3.125 X 0.250	1
4	34L827AH	Lower Chuck Mandrel Bottom (INCLUDES HARDWARE)	1
4.1	56L828AH	Dowel Pin 0.1875 X 0.250	1
5	21L817AH	Snap Ring 1.850 Bore	1
6	26L827AH	Lower Chuck Pump Ring	1
7	115L816AH	Wavy Spring Washer 1.404 X 1.1819 X 0.020	2
8	18L816AH	Ball Bearing 0.7874 X 1.8504 X 0.5512	1
9	78L641AH	Seaming Roll Retainer	1
10	29L826AH	Seaming Roll Retainer Screw	1
11	45L827AH	Lower Chuck Slide Bottom (INCLUDES HARDWARE)	1
12	Socket HD Set Screw 0.3125-18 X 0.7500 (H/DG W/NYL)	Screw	1
13	93L816AH	Washer 0.8906 X 1.9375 X 0.050	1
14	25829AH	Lower Chuck Cam Roll	1
15	16P346AH	Lower Chuck Return Cam Roll	1
16	5L829AH	Lower Cam Roll Pin	1
17	Socket HD Capscrew 0.3125-18 X 1.0000 (W/NYL)	Screw	1
18	13L827AH	Lower Chuck Slide Block Bottom	1
19	57L826AH	Pipe Plug	1

**FOR MORE INFORMATION, CONTACT AMERICAN HOLT AT:**  
781-440-9993 • sales@americanholt.com • www.americanholt.com

# 100L Seamer

AFTER MARKET PARTS FOR:

## LOWER CHUCK - TOP



**NOTICE:** All parts offered by American Holt are manufactured by or for American Holt and not by or for the Original Equipment Manufacturer. Part numbers shown that are those of the Original Equipment Manufacturer, if any, are used for reference purposes only. American Holt is an independent supplier of quality replacement parts having no affiliation with any Original Equipment Manufacturer. All prices are subject to change without notice. Copyright ©2020 American Holt Corp. All rights reserved.



IN-STOCK AND READY TO SHIP.

ITEM NO.	PART NO.	DESCRIPTION	QTY
1	9L827AH	Lower Chuck Slide Shield - Top	1
2	22L816-30AH	Shim 0.030 Thick	2
3	22L816-10AH	Shim 0.010 Thick	3
4	22L816-5AH	Shim 0.005 Thick	3
5	22L816-2AH	Shim 0.002 Thick	3
6	8L826AH	Lower Chuck Spring Screw	1
7	83L815AH	O-Ring 1.125 X 1.250 X 0.0625	1
8	23L827AH	Lower Chuck Mandrel - Top	1
9	21L816AH	Lower Chuck Spring Washer	1
10	8L840AH	Lower Chuck Spring - Red	1
11	41L817AH	Snap Ring - Nickel Plated 2.440 Bore	1
12	116L816AH	Ball Bearing 1.3780 X 2.4409 X 1.1024	1
13	44L815AH	O-Ring 2.4375 X 2.625 X 0.0937	1
14	70L815AH	Polypak Seal 2.875 X 3.250 X 0.1875	1
15	73L815AH	Teflon Back-Up Ring 2.87 X 3.25 X 0.0625	1
16	69H615AH	Lower Chuck Gasket	1
17	4P116AH	Bearing Lockwasher 35MM	1
18	50L827AH	Lower Chuck Slide - Top	1
18.1	32L847AH	Key	1
19	26L815AH	O-Ring 3.250 X 0.375 X 0.0625	1
20	8L827AH	Lower Chuck Slide Bearing - Top	1
21	9L826AH	Lower Chuck Bottom Mandrel Screw	1
22	27L823AH	Lower Chuck Gear 26T 10P RH	1

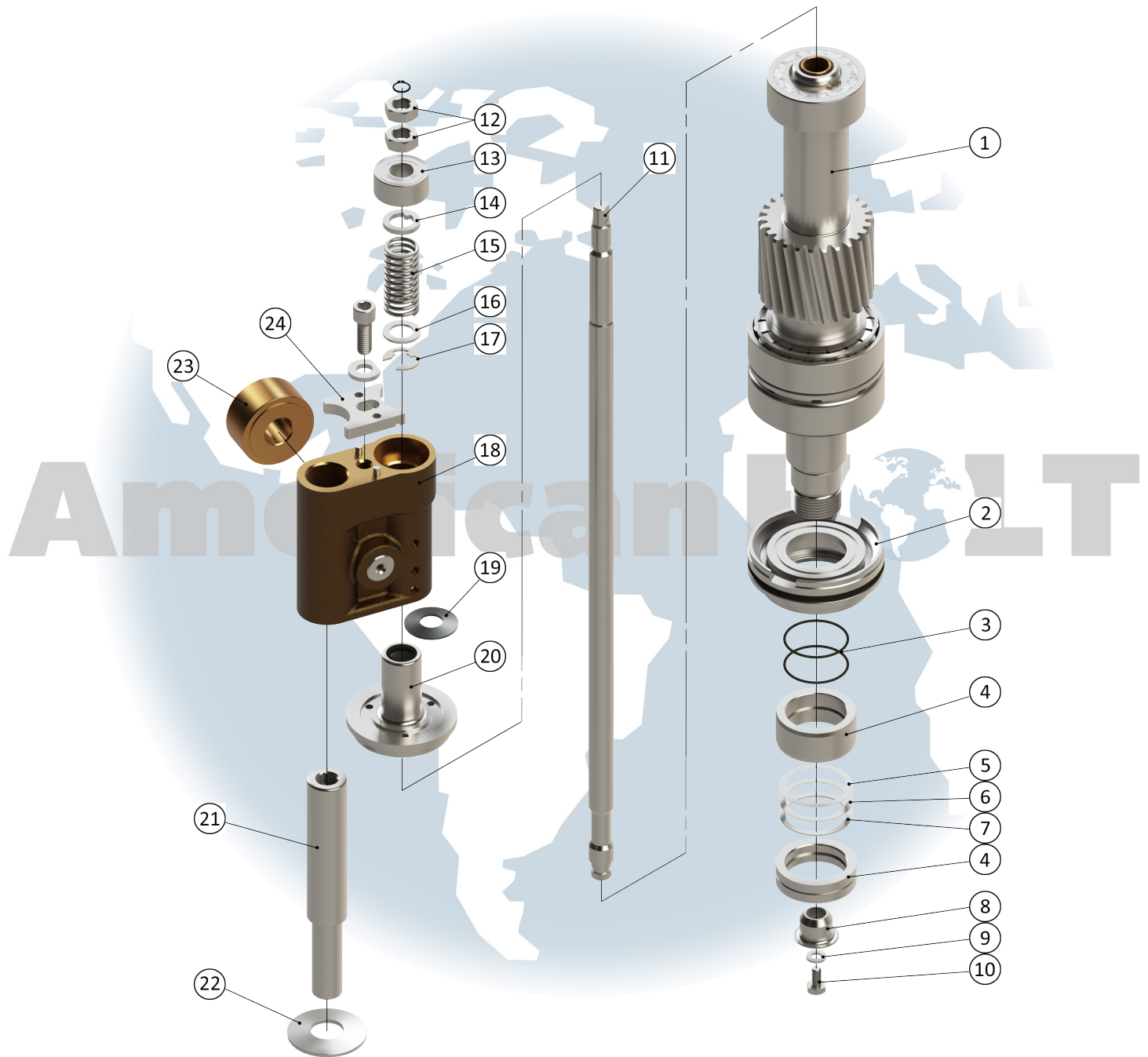
12L800AH	<b>7L840AH</b>	Lower Chuck Spring - Blue
14L800AH	<b>9L840AH</b>	Lower Chuck Spring - Gold
15L800AH	<b>10L840AH</b>	Lower Chuck Spring - Green

**FOR MORE INFORMATION, CONTACT AMERICAN HOLT AT:**  
781-440-9993 • sales@americanholt.com • www.americanholt.com

# 100L Seamer

AFTER MARKET PARTS FOR:

## SEAMING SPINDLE



**NOTICE:** All parts offered by American Holt are manufactured by or for American Holt and not by or for the Original Equipment Manufacturer. Part numbers shown that are those of the Original Equipment Manufacturer, if any, are used for reference purposes only. American Holt is an independent supplier of quality replacement parts having no affiliation with any Original Equipment Manufacturer. All prices are subject to change without notice. Copyright ©2020 American Holt Corp. All rights reserved.

IN-STOCK AND READY TO SHIP.

ITEM NO.	PART NO.	DESCRIPTION	QTY
1	18L800AH	Seaming Spindle	1
2	8L800AH	Face Seal and Rotor	1
3	28L815AH	O-Ring 1.500 X 1.625 X 0.062	2
4	503L853AH	Seal Sleeve - Top	1
	505L853AH	Seal Sleeve - Bottom	1
5	129L816-3AH	Shim 0.003	3
6	129L816-5AH	Shim 0.005	3
7	129L816-10AH	Shim 0.010	3
8	25L841AH	Knockout Pad	1
9	Washer 0.281 X 0.625 X 0.05	Washer	1
10	13L826AH	Hex HD Cap Screw Long-Lok 0.250-28 X 0.5000	1
N/A	L636AH	Seaming Chuck	1
11	20L844AH	Knockout Rod (INCLUDES HARDWARE)	1
11.1	82L817AH	Snap Ring	1
12	Hex Jam Nut 0.5000-20	Nut	2
13	15L816AH	Ball Bearing 0.5906 X 1.3780 X 0.6250	1

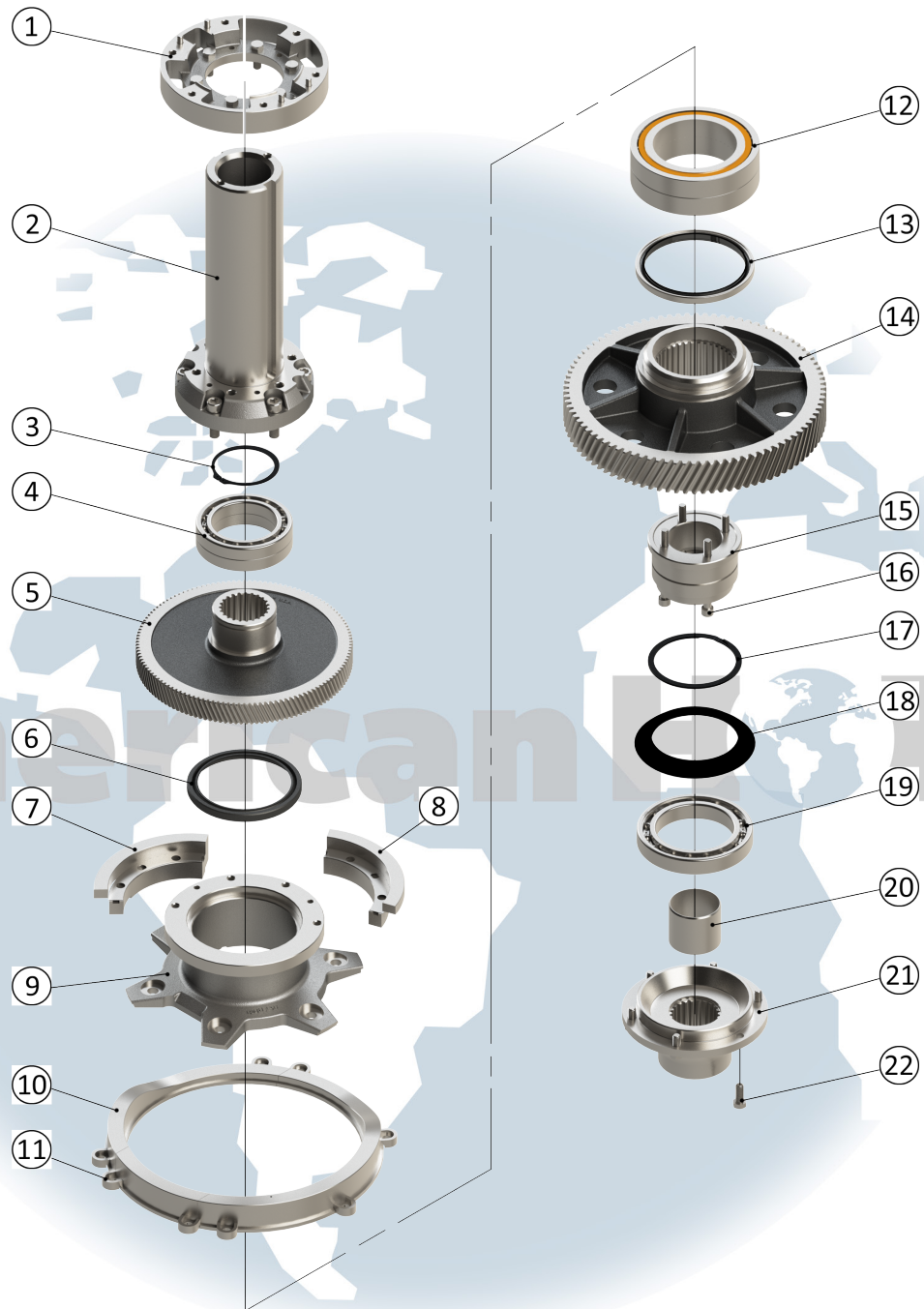
ITEM NO.	PART NO.	DESCRIPTION	QTY
14	49L816AH	Keyed Washer 0.601 X 0.937 X 0.125	1
15	5L840AH	Knockout Cam Rod Cushion Spring	1
16	136L816AH	Washer 0.2812 X 0.9375 X 0.0625	1
17	1L617AH	Retaining Ring - Nickel Plated 1.1375 Shaft	1
18	57L841AH	Knockout Carrier (INCLUDES HARDWARE)	1
18.1	71L826AH	Knockout Cam Roll Pin Set Screw	1
18.2	3L829AH	Knockout Cam Roll Pin	1
19	38L816AH	Belleville Washer 0.562 X 1.338 X 0.059	1
20	64L841AH	Knockout Carrier Guide Flange	1
20.1	77L815AH	Wiper Ring	1
21	14L826AH	Knockout Carrier Guide Pin	1
22	37L816AH	Belleville Washer	1
N/A	203L853AH	Knockout Carrier Guide Pin Spacer	1
23	12L629AH	Knockout Cam Roll	1
24	34L817AH	Knockout Rod Bearing Retainer	1

**FOR MORE INFORMATION, CONTACT AMERICAN HOLT AT:**  
781-440-9993 • sales@americanholt.com • www.americanholt.com

# 100L Seamer

AFTER MARKET PARTS FOR:

## LOWER TURRET



**NOTICE:** All parts offered by American Holt are manufactured by or for American Holt and not by or for the Original Equipment Manufacturer. Part numbers shown that are those of the Original Equipment Manufacturer, if any, are used for reference purposes only. American Holt is an independent supplier of quality replacement parts having no affiliation with any Original Equipment Manufacturer. All prices are subject to change without notice. Copyright ©2020 American Holt Corp. All rights reserved.

IN-STOCK AND READY TO SHIP.

\*\* Made to Order

ITEM NO.	PART NO.	DESCRIPTION	QTY
1	5L827AH	Seaming Turret Mounting Ring (INCLUDES HARDWARE)	1
N/A	21L854AH	Lower Turret Keyway Shield	1
N/A	27L828AH	Pin for Lower Turret	4
2	*70L844AH	Lower Turret Hollow Shaft (INCLUDES HARDWARE)	1
N/A	28L828AH	Pin for Hollow Shaft	2
N/A	42L827AH	Lower Turret Top	1
3	5P917AH	Snap Ring 3.937 Shaft	1
4	53P916AH	Ball Bearing 3.9370 X 5.9055 X 1.7323	1
5	81L823AH	Lower Turret Drive Gear	1
N/A	43L827AH	Lower Turret Bottom	1
	71L814AH (NOT SHOWN)	Sight Glass Gauge	1
N/A	37L828AH	Dowel Pin 0.498 X 0.500 X 1.250	2
6	9P915AH	Oil Seal (NOT USED ON OIL LUBRICATED MACHINE)	1
7	41L820AH	Lower Chuck Return Cam - Feed	1
7.1	253L816-3AH	Shim 0.003 Thick	2
7.2	253L816-5AH	Shim 0.005 Thick	1
7.3	253L816-10AH	Shim 0.010 Thick	1
8	3L820AH	Lower Chuck Return Cam - Discharge	1
8.1	253L816-3AH	Shim 0.003 Thick	2
8.2	253L816-5AH	Shim 0.005 Thick	1
8.3	253L816-10AH	Shim 0.010 Thick	1

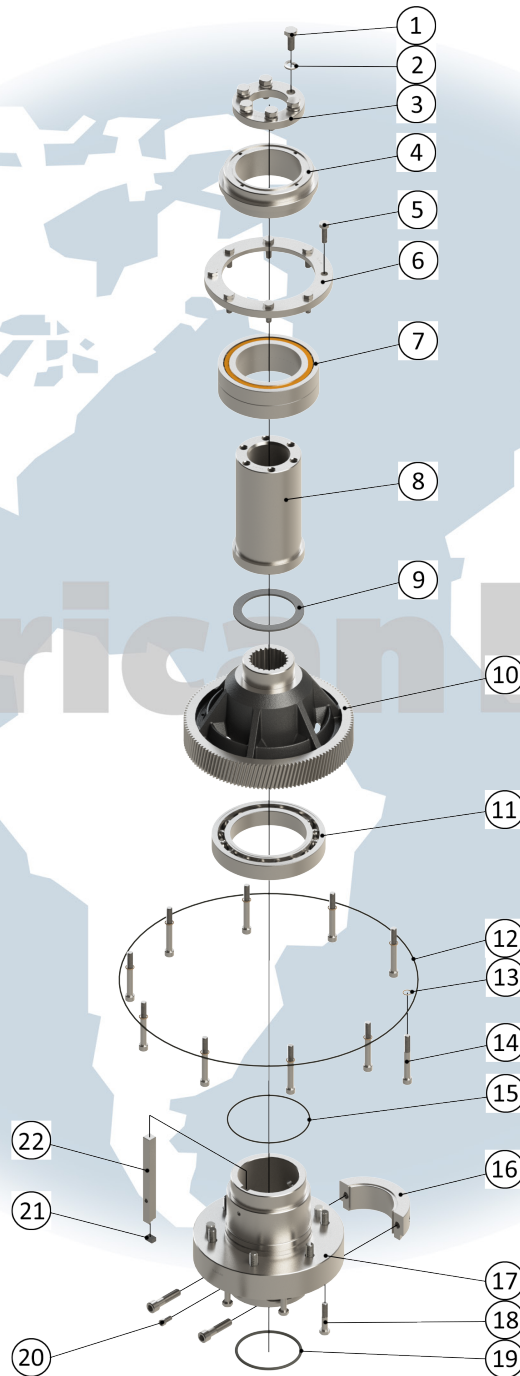
ITEM NO.	PART NO.	DESCRIPTION	QTY
9	18L817AH	Lower Turret Bearing Retainer	1
N/A	106L826AH	Retainer Screw	1
10	40L820AH	Lower Chuck Cam	1
11	79L817AH	Lower Chuck Cam Clamp - Single	8
12	17L816AH	Ball Bearing	1
13	5L815AH	Oil Seal	1
14	24L823AH	Lower Turret Gear	1
15	35L817AH	Holder Lower Drive Pinion Bearing	1
16	Hex HD Cap Screw 0.5000-13 X 5.0000	Screw	4
17	86L817AH	Retaining Ring Bearing Holder Seal	1
18	87L815AH	Seal Bearing Holder Excluder	1
19	16L816AH	Ball Bearing 4.7244 X 7.0866 X 1.1024	1
N/A	17L817AH	Lower Drive Bearing Retainer	1
20	154L853AH	Lower Drive Pin Hub Sleeve	1
N/A	110L823AH	Lower Drive Pinion	1
21	26L823AH	Lower Drive Pinion Hub	1
22	Hex HD Cap Screw 0.5000-13 X 1.2500	Screw	6
N/A	98L815AH	Upper Turret Hub Cap Seal	1
N/A	68L654AH	Seaming Turret Numbers 1 - 6	1
N/A	2L854AH	Seaming Turret Numbers 7 - 9	1
N/A	3L854AH	Seaming Turret Numbers 10 - 12	1

**FOR MORE INFORMATION, CONTACT AMERICAN HOLT AT:**  
781-440-9993 • sales@americanholt.com • www.americanholt.com

# 100L Seamer

AFTER MARKET PARTS FOR:

## UPPER TURRET



**NOTICE:** All parts offered by American Holt are manufactured by or for American Holt and not by or for the Original Equipment Manufacturer. Part numbers shown that are those of the Original Equipment Manufacturer, if any, are used for reference purposes only. American Holt is an independent supplier of quality replacement parts having no affiliation with any Original Equipment Manufacturer. All prices are subject to change without notice. Copyright ©2020 American Holt Corp. All rights reserved.

IN-STOCK AND READY TO SHIP.

\*\* Made to Order

ITEM NO.	PART NO.	DESCRIPTION	QTY
1	Hex HD Cap Screw 0.6250-11 X 1.5000	Screw	6
2	Lock Washer 0.6250	Washer	6
3	*32L817AH	Bearing Holder Clamp Ring	1
N/A	69L820AH	Seaming Cam 1st Operation	1
N/A	70L820AH	Seaming Cam 2nd Operation	1
N/A	L820AH	Knockout Cam - Split	1
4	*26L853AH	Upper Turret Bearing Spacer	1
5	Hex HD Cap Screw Nylok 0.5000-13 X 1.5000	Screw	8
6	30L817AH	Upper Turret Bearing Retainer	1
7	17L816AH	Ball Bearing	1
8	*31L817AH	Upper Turret Bearing Holder	1
N/A	31L816AH	Oilite Bushing	20
N/A	46L841AH	Upper Turret Top	1
N/A	34L828AH (NOT SHOWN)	Dowel Pin	2
9	95L816AH	Thrust Washer	1
10	32L823AH	Seaming Spindle Drive Gear	1

ITEM NO.	PART NO.	DESCRIPTION	QTY
11	29L816AH	Ball Bearing	1
12	59L815AH	O-Ring	1
N/A	45L841AH	Upper Turret Bottom	1
13	11L615AH	O-Ring 0.56 X 0.75 X 0.09	10
14	Hex HD Cap Screw 0.5000-13 X 4.0000	Screw	10
15	29L815AH	O-Ring 6.250 X 6.500 X 0.125	1
16	*6L841AH	Upper Turret Hub Cap	1
17	*5L841AH	Upper Turret Hub (INCLUDES HARDWARE)	1
18	Hex HD Cap Screw 0.5000-13 X 2.5000	Screw	6
19	16L815AH	O-Ring 4.75 X 0.25 X 0.25	1
20	Socket HD Cap Screw 0.3750-16 X 0.7500	Screw	1
21	17L815AH	Keyway Seal	1
22	*31L847AH	Hub Key	1

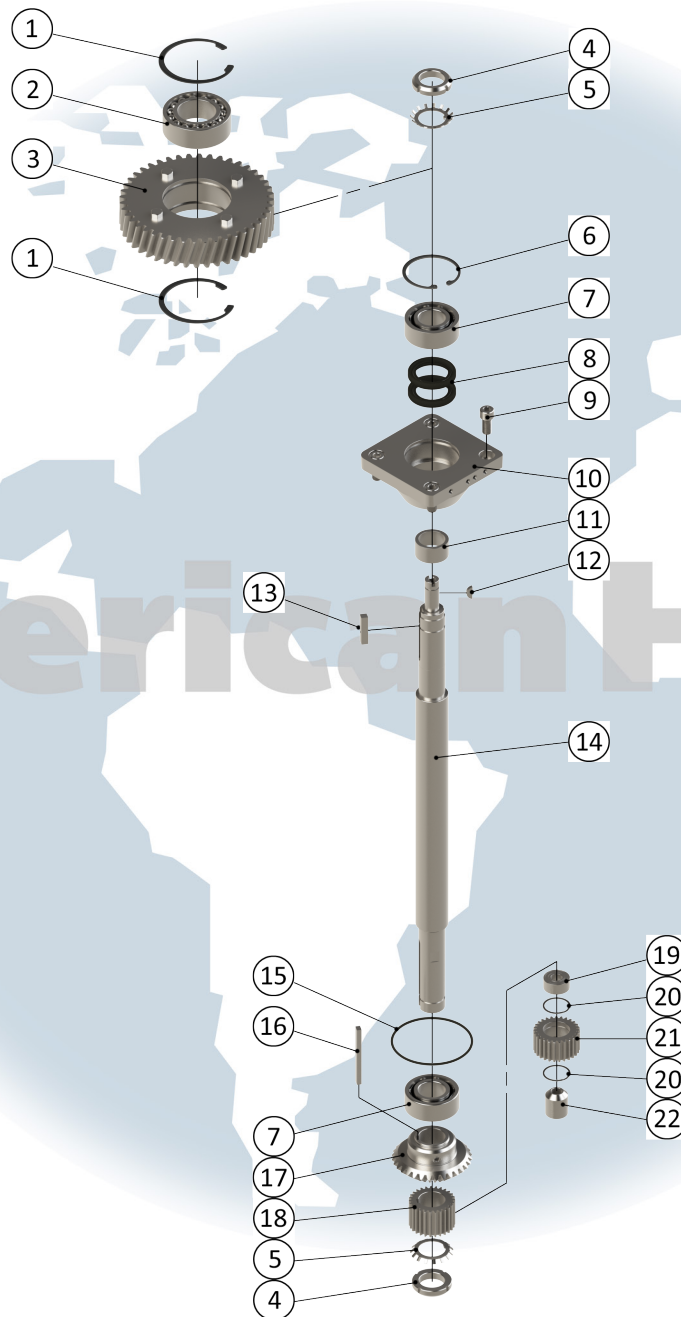
**FOR MORE INFORMATION, CONTACT AMERICAN HOLT AT:**  
781-440-9993 • sales@americanholt.com • www.americanholt.com



# 100L Seamer

AFTER MARKET PARTS FOR:

## SEPARATOR DRIVE



**NOTICE:** All parts offered by American Holt are manufactured by or for American Holt and not by or for the Original Equipment Manufacturer. Part numbers shown that are those of the Original Equipment Manufacturer, if any, are used for reference purposes only. American Holt is an independent supplier of quality replacement parts having no affiliation with any Original Equipment Manufacturer. All prices are subject to change without notice. Copyright ©2020 American Holt Corp. All rights reserved.

IN-STOCK AND READY TO SHIP.

\*\* Made to Order

ITEM NO.	PART NO.	DESCRIPTION	QTY
1	9L617AH	Retaining Ring 3.544 Bore	2
2	100L616AH	Ball Bearing 1.9685 X 3.5433 X 1.8750	1
3	92L823AH	Separator Intermediate Gear - Upper 44T 6P RH (INCLUDES HARDWARE)	1
N/A	148L816AH	Separator Intermediate Bearing Washer	1
	Dowel Pin 0.2500 X 0.7500 (NOT SHOWN)	Pin	1
	Hex HD Cap Screw 0.6250-11 X 4.5000 (NOT SHOWN)	Screw	1
N/A	61L817AH	Separator Intermediate Bearing Holder	1
4	3P116AH	Bearing Locknut	2
5	4P116AH	Bearing Lock Washer 1.3758	2
N/A	114L823AH	Separator Drive Gear 20T 6P LH	1
6	13L817AH	Snap Ring 2.834 Bore	1
7	27L816AH	Ball Bearing 1.3780 X 2.8346 X 1.0625	2
8	10L815AH	Oil Seal 1.750 X 2.500 X 0.375	2
9	Socket HD Cap Screw 0.5000-13 X 1.0000	Screw	4
10	62L817AH	Separator Drive Bearing Holder - Top	1
11	15L853AH	Sleeve 1.379 X 1.750 X 0.9375	1
12	Woodruff 606 #9	Key	1

ITEM NO.	PART NO.	DESCRIPTION	QTY
13	5L647AH	Separataor Driven Gear Key 0.375 SQ X 1.6875	1
14	12L844AH	Separator Drive Shaft	1
N/A	14L817AH	Separator Drive Bearing Holder - Bottom	1
15	12L815AH	O-Ring 4.0000 X 4.2500 X 0.1250	1
	Washer 0.4063 X 0.8125 X 0.1250 (NOT SHOWN)	Washer	3
	Hex HD Cap Screw 0.3750-16 X 0.7500 (NOT SHOWN)	Screw	3
16	6L847AH	Key 0.250 X 0.375 X 3.4375	1
17	20L823AH	Marker Miter Gear 8P 32T 20deg (USED W/ MARKER) (INCLUDES HARDWARE)	1
	174L853AH (NOT SHOWN)	Separator Drive Gear Spacer (USED WITHOUT MARKER)	1
18	1L823AH	Separator Drive Gear 27T 12P	1
19	15L816AH	Ball Bearing 0.5906 X 1.3780 X 0.6250	1
20	12L817AH	Snap Ring 1.3750 Bore	2
21	19L823AH	Separator Intermediate Gear 27T 12P	1
22	*2L853AH	Spacer 0.5625 X 1.1879 X 1.3750	1

**FOR MORE INFORMATION, CONTACT AMERICAN HOLT AT:**  
781-440-9993 • sales@americanholt.com • www.americanholt.com

