





**American Holt is a full-service engineering firm focused on the reverse engineering of high-usage machinery components. Founded in 1995, American Holt manufactures aftermarket replacement parts for machines used by the beverage, food processing, packaging, and paper converting industries. We provide engineered savings to customers around the world.**

**CONTACT:**

American Holt  
203 Carnegie Row  
Norwood, MA 02062  
781-440-9993  
sales@americanholt.com

**HOURS:**

Monday-Friday  
8:00am to 5:00pm EST

**SALES:**

Tom St. Lawrence, President  
Charlene Butts, Sales Manager

**NOTICE:**

*All parts offered by American Holt are manufactured by or for American Holt and not by or for the Original Equipment Manufacturer. Part numbers shown that are those of the Original Equipment Manufacturer, if any, are used for reference purposes only. American Holt is an independent supplier of quality replacement parts having no affiliation with any Original Equipment Manufacturer. All prices are subject to change without notice.*

*Copyright ©2021 American Holt Corp. All rights reserved.*

# Table of Contents

---

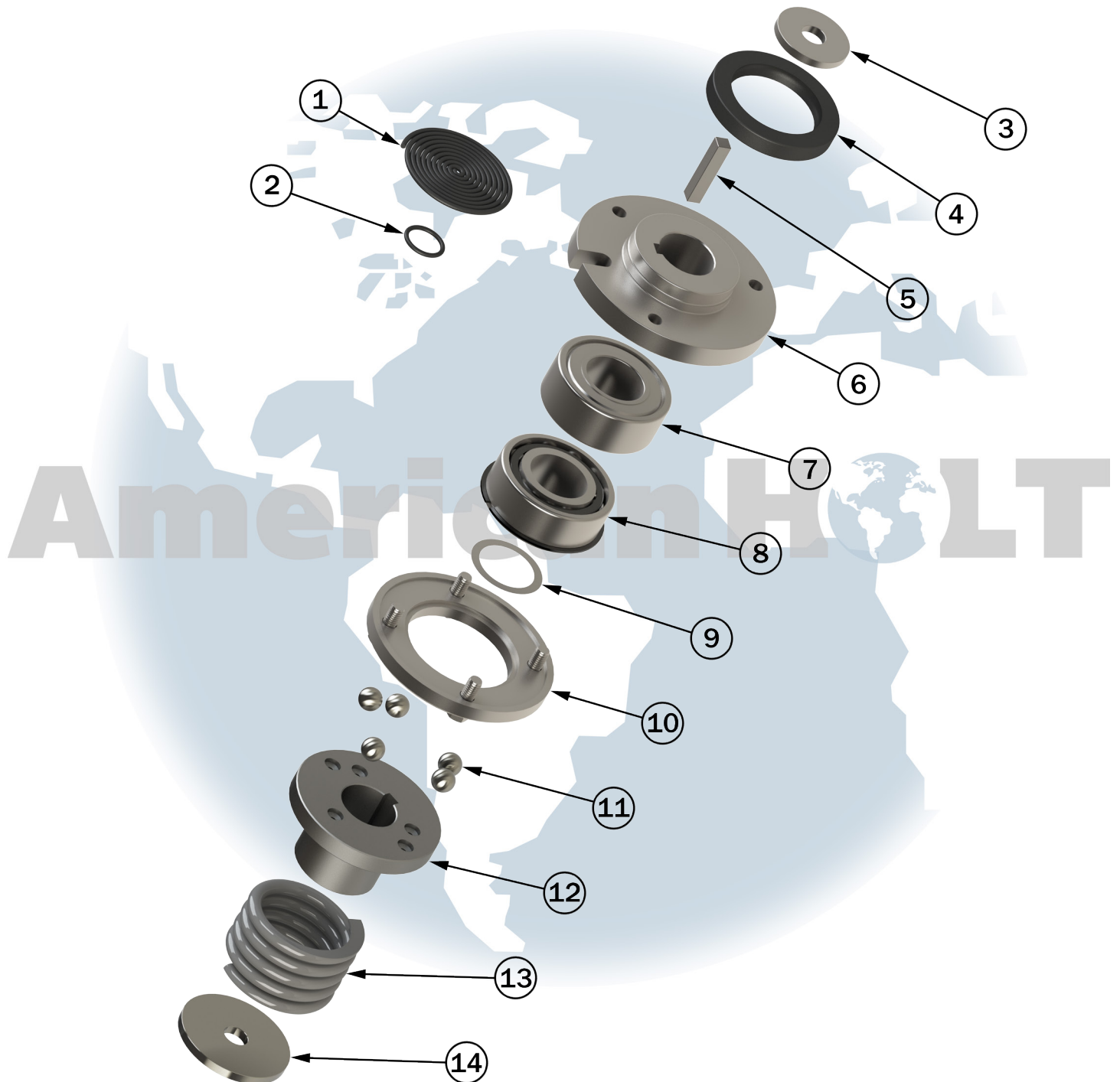
## 140S Seamer

Can Feed Drive A .....	2
Lower Chuck - Bottom - 5S800AH .....	4
Lower Chuck - Top - 4S400AH .....	6
Seaming Lever .....	8
Seaming Spindle .....	10
Miscellaneous Parts .....	12

# 140S Seamer

AFTER MARKET PARTS FOR:

## CAN FEED DRIVE A



**NOTICE:** All parts offered by American Holt are manufactured by or for American Holt and not by or for the Original Equipment Manufacturer. Part numbers shown that are those of the Original Equipment Manufacturer, if any, are used for reference purposes only. American Holt is an independent supplier of quality replacement parts having no affiliation with any Original Equipment Manufacturer. All prices are subject to change without notice. Copyright ©2020 American Holt Corp. All rights reserved.

IN-STOCK AND READY TO SHIP.

\* Item made-to-order

ITEM NO.	PART NO.	DESCRIPTION	QTY
N/A	20S814AH	Liquid Level Sight Plug	1
N/A	16S454AH	Feed Drive Case Cover	1
1	18L415AH	Oil Seal 16.39 X 16.7 X 0.139	1
2	22L415AH	O-Ring 0.88 1.12 X 0.139	1
N/A	211L616AH	Idler Gear Washer	2
N/A	8S453AH	Feed Drive Case Spacer - Split	1
N/A	96S454AH	Feed Sprocket Guard	1
3	45L616AH	Washer 0.656 X 2.000 X 0.312	1
4	2L815AH	Oil Seal 2.500 X 3.500 X 0.500	1
5	2L647AH	Key 0.3750 X 0.3750 X 1.968	2
N/A	17S828AH	Eccentric Adjustment Pin	1
6	21S824AH	Feed Sprocket Hub	1
N/A	8S424AH	Feed Sprocket 36T 1.188P	1
7	9L616AH	Ball Bearing 1.5748 X 3.1496 X 1.1875	1
N/A	18S444AH	Feed Sprocket Shaft	1
8	6L816AH	Ball Bearing 1.5748 X 3.1496 X 1.187	1
9	52L816AH	Shim 1.5156 X 1.9688 X 0.003-0.005	3
10	8L817AH	Bearing Retainer (INCLUDES HARDWARE)	1
N/A	24S423AH	Feed Bevel Gear 72T BP	1
11	48L616AH	Steel Ball 0.62 Diameter	5
12	1L897AH	Feed Safety Clutch Hub	1
13	3L840AH	Feed Safety Clutch Spring	1
14	12L816AH	Washer 0.66 X 3.00 X 0.25	1

**FOR MORE INFORMATION, CONTACT AMERICAN HOLT AT:**  
781-440-9993 • sales@americanholt.com • www.americanholt.com

# 140S Seamer

AFTER MARKET PARTS FOR:

## LOWER CHUCK - BOTTOM - 5S800AH



**NOTICE:** All parts offered by American Holt are manufactured by or for American Holt and not by or for the Original Equipment Manufacturer. Part numbers shown that are those of the Original Equipment Manufacturer, if any, are used for reference purposes only. American Holt is an independent supplier of quality replacement parts having no affiliation with any Original Equipment Manufacturer. All prices are subject to change without notice. Copyright ©2020 American Holt Corp. All rights reserved.

IN-STOCK AND READY TO SHIP.

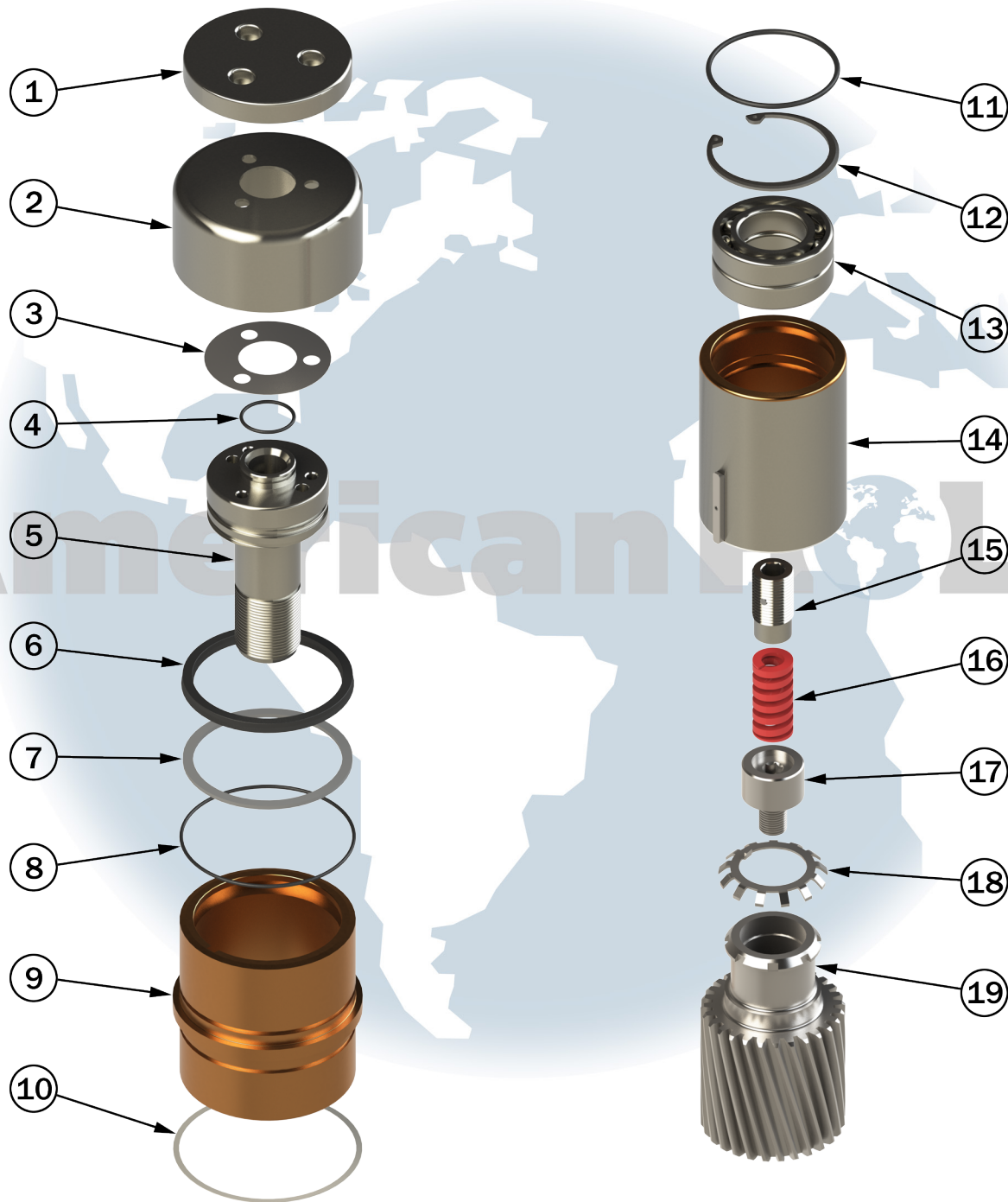
ITEM NO.	PART NO.	DESCRIPTION	QTY
1	20L415AH	O-Ring 2.989 X 3.129 X 0.070	1
2	17S827AH	Lower Chuck Slide Bearing - Bottom	1
3	84L815AH	Oil Seal 2.6250 X 2.8750 X 0.1250	1
4	8S827AH	Lower Chuck Mandrel - Bottom (INCLUDES HARDWARE)	1
5	21L817AH	Retaining Ring 1.850 Bore	1
6	26L827AH	Lower Chuck Pump Ring	1
7	115L816AH	Wavy Spring Washer 1.404 X 1.819 X 0.020	2
8	18L816AH	Ball Bearing 0.7874 X 1.850 X 0.5512	1
9	78L641AH	Seaming Roll Retainer	1
10	29L826AH	Retaining Screw	1
11	4S827AH	Lower Chuck Slide - Bottom (INCLUDES HARDWARE)	1
12	93L816AH	Washer 0.8906 X 1.9375 X 0.050	1
13	2S829AH	Lower Chuck Cam Roll	1
14	17S814AH	Lower Chuck Slide Orifice	1
15	1S829AH	Lower Chuck Cam Roll Pin	1
15.5	57L826AH	Pipe Pressure Plug 1/8-27 NPT	1
16	6S827AH	Lower Chcuk Slide Block	1
17	16P346AH	Lower Chuck Return Cam Roll	1
N/A	8H628AH	Pin Lower Chuck Bearing - Bottom	1

**FOR MORE INFORMATION, CONTACT AMERICAN HOLT AT:**  
781-440-9993 • sales@americanholt.com • www.americanholt.com

# 140S Seamer

AFTER MARKET PARTS FOR:

## LOWER CHUCK - TOP - 4S400AH



**NOTICE:** All parts offered by American Holt are manufactured by or for American Holt and not by or for the Original Equipment Manufacturer. Part numbers shown that are those of the Original Equipment Manufacturer, if any, are used for reference purposes only. American Holt is an independent supplier of quality replacement parts having no affiliation with any Original Equipment Manufacturer. All prices are subject to change without notice. Copyright ©2020 American Holt Corp. All rights reserved.



IN-STOCK AND READY TO SHIP.

\* Item made-to-order

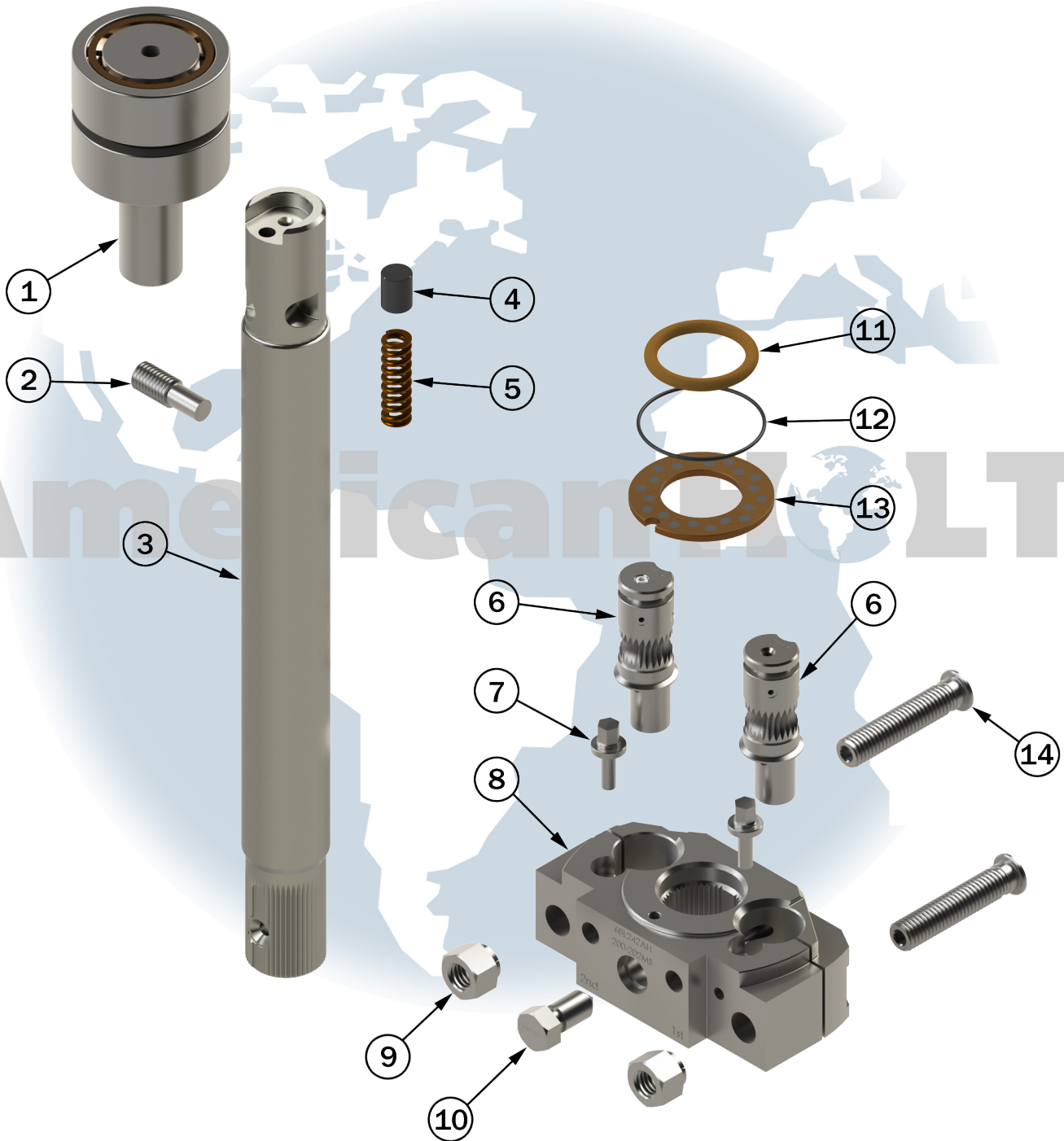
ITEM NO.	PART NO.	DESCRIPTION	QTY
1	3S827AH	Lower Chuck Plate	1
2	4L427AH	Lower Chuck Slide Shield	1
3	54L416AH	Lower Chuck Shim 0.002, 0.005, 0.010 thick	3
N/A	54L416AH	Lower Chuck Shim 0.030 thick	1
4	55S815AH	O-Ring 0.864 X 0.070	1
5	16S827AH	Lower Chuck Mandrel Top	1
6	58S815AH	Oil Seal 2.625 X 3.000 X 0.187	1
7	56S815AH	PTFE Back-Up Ring	1
8	20L415AH	O-Ring 2.989 X 3.129 X 0.070	1
9	14S827AH	Lower Chuck Slide Bearing Top	1
10	74S815AH	Lower Chuck Gasket 3.15 X 3.35 X 0.016	1
11	21L415AH	O-Ring 2.175 X 2.381 X 0.103	1
12	12L417AH	Retaining Ring, Beveled 2.188 Bore	1
13	55L416AH	Ball Bearing (Pair) 1.1811 X 2.165 X 1.0236	1
14	15S827AH	Lower Chuck Slide Top	1
14.1	32L847AH	Woodruff Key	1
15	31S826AH	Lower Chuck Spring Screw	1
16	8S840AH	Lower Chuck Spring	1
17	9L426AH	Lower Chuck Mandrel Screw Bottom	1
18	18L616AH	Bearing Lock Washer WH-06	1
19	15S423AH	Lower Chuck Gear	1

**FOR MORE INFORMATION, CONTACT AMERICAN HOLT AT:**  
781-440-9993 • sales@americanholt.com • www.americanholt.com

# 140S Seamer

AFTER MARKET PARTS FOR:

## SEAMING LEVER



**NOTICE:** All parts offered by American Holt are manufactured by or for American Holt and not by or for the Original Equipment Manufacturer. Part numbers shown that are those of the Original Equipment Manufacturer, if any, are used for reference purposes only. American Holt is an independent supplier of quality replacement parts having no affiliation with any Original Equipment Manufacturer. All prices are subject to change without notice. Copyright ©2020 American Holt Corp. All rights reserved.

IN-STOCK AND READY TO SHIP.

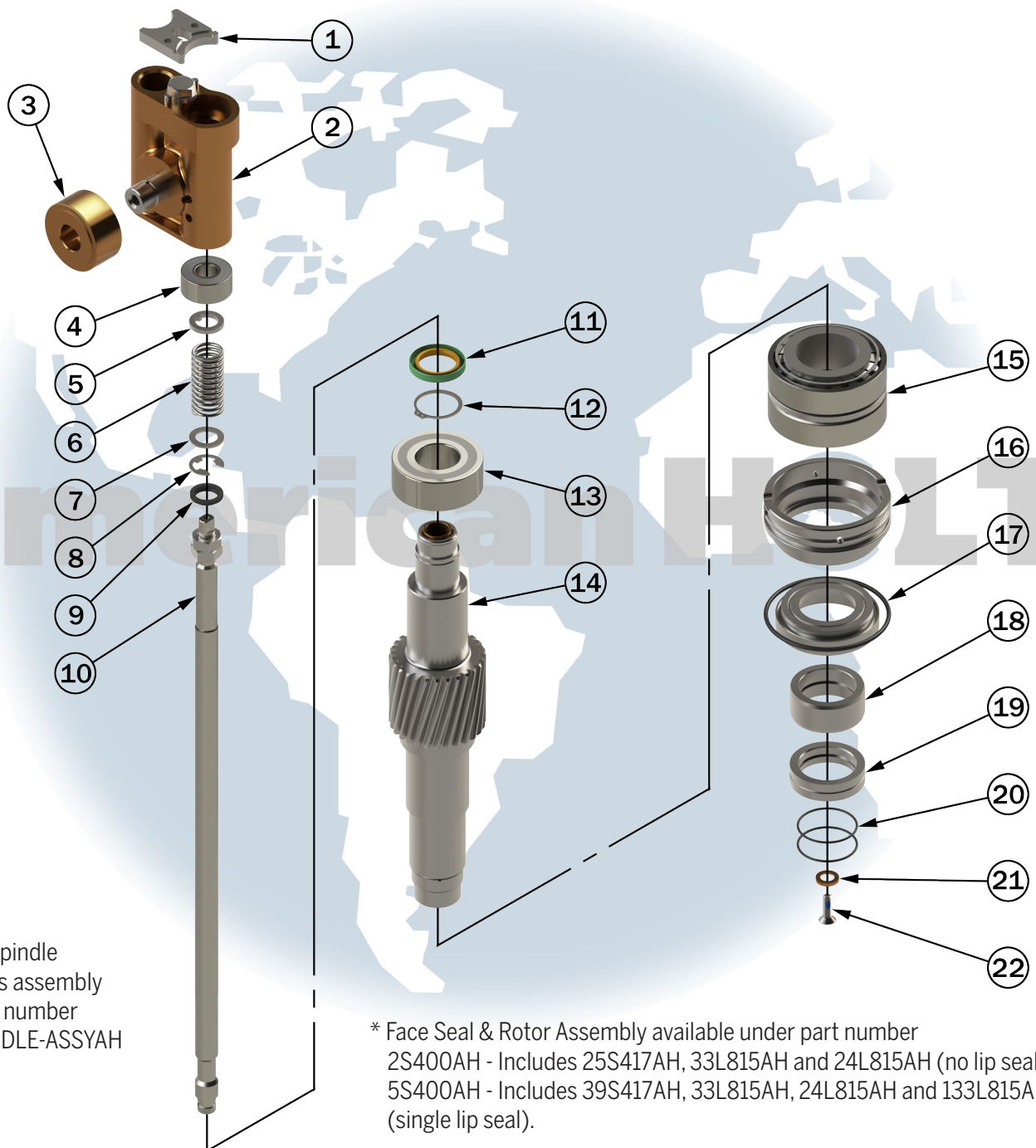
ITEM NO.	PART NO.	DESCRIPTION	QTY
1	239L816AH	Dual Roller Cam Follower Stud Type	1
N/A	19S826AH	Adjustment Screw	1
N/A	8S841AH	Seaming Cam Lever	1
2	9S826AH	Seaming Cam Lever Adjustment Screw	2
3	9S444AH	Seaming Lever Shaft	1
4	9L828AH	Seaming Cam Lever Lift Plug	1
5	6L840AH	Seaming Cam Lever Lift Spring	1
N/A	43S416AH	Iron Bushing	2
6	29S841AH	Seaming Roll Pin 2nd Operation (INCLUDES HARDWARE)	1
6	30S841AH	Seaming Roll Pin 1st Operation (INCLUDES HARDWARE)	1
7	4S826AH	Adjustment Screw	2
8	68L242AH	Seaming Lever Block	1
9	104S816AH	Locknut 0.5-13 SS	2
10	32S826AH	Seaming Lever Cone Point Screw SS	1
11	25L815AH	O-Ring 1.375 X 1.750 X 0.1875	1
12	19S415AH	O-Ring 1.875 X 2.00 X 0.070	1
N/A	3S417AH	O-Ring Retainer	1
13	23S816AH	Washer 1.253 X 2.25 X 0.125	1
14	48S826AH	Seaming Roll Adjustment Screw	2
N/A	S842AH	Seaming Roll Adjustment Screw	1

**FOR MORE INFORMATION, CONTACT AMERICAN HOLT AT:**  
781-440-9993 • sales@americanholt.com • www.americanholt.com

# 140S Seamer

AFTER MARKET PARTS FOR:

## SEAMING SPINDLE



**NOTICE:** All parts offered by American Holt are manufactured by or for American Holt and not by or for the Original Equipment Manufacturer. Part numbers shown that are those of the Original Equipment Manufacturer, if any, are used for reference purposes only. American Holt is an independent supplier of quality replacement parts having no affiliation with any Original Equipment Manufacturer. All prices are subject to change without notice. Copyright ©2020 American Holt Corp. All rights reserved.

IN-STOCK AND READY TO SHIP.

ITEM NO.	PART NO.	DESCRIPTION	QTY
1	34L817AH	Knockout Rod Bearing Retainer	1
2	45S841AH	Knockout Carrier (INCLUDES HARDWARE)	1
2.1	3L829AH	Knockout Cam Roll Pin	1
3	12L629AH	Knockout Cam Roll	1
N/A	33S826AH	Knockout Carrier Guide Pin	1
N/A	26S816AH	Washer 16.3 X 1.5	3
N/A	51S853AH	Support Washer 0.640 ID X 0.968 OD X 0.182 Thick	1
4	15L816AH	Ball Bearing 0.5906 ID X 1.3780 X 0.6250	1
5	49L816AH	Keyed Washer 0.601 ID X 1.187 X 0.125	1
6	5L840AH	Spring 0.875 X 1.912 Free Length	1
7	136L816AH	Washer 0.593 X 0.9375 X 0.0625	1
8	1L617AH	Retaining Ring 1.1875 Shaft	1
9	77L815AH	Wiper Ring 0.625 ID X 0.891 OD X 0.104 Thick	1
N/A	6S441AH	Knockout Carrier Guide Flange	1
N/A	2S415AH	O-Ring 2.237 X 2.443 X 0.109	1
10	31S444AH	Knockout Rod (INCLUDES HARDWARE)	1
10.1	82L817AH	Retaining Ring 0.625 Shaft	1
11	8L415AH	Oil Seal	1
12	1P117AH	Snap Ring 0.625 Shaft SS	1

ITEM NO.	PART NO.	DESCRIPTION	QTY
13	34L816AH	Ball Bearing 1.1811 X 2.4409 X 0.9375	1
14	8S444AH	Seaming Spindle & Gear	1
14.1	48L816AH	Oilite Bushing 0.627 X 0.750 X 1.00	2
N/A	"3S815AH (NOT SHOWN)"	Oil Seal Sleeve	1
15	11S5816AH	Tapered Roller Bearing Assembly	1
N/A	2S414AH	Seaming Spindle Spacer	1
16	25S417AH	Seaming Spindle Lower Bearing Retainer	1
	39S417AH	Seaming Spindle Lower Bearing Retainer	1
17	33L815AH	Face Seal & Rotor	1
17.1	24L815AH	O-Ring 3.125 X 3.3750 X 0.125	1
N/A	97S815AH	Oil Seal	1
18	503L853AH	Seal Sleeve Top	1
N/A	129L816AH	Shim 0.003, 0.005, 0.010, 0.032 Thick	6
19	505L853AH	Seal Sleeve Bottom	1
20	28L815AH	O-Ring 1.5000 X 1.6250 X 0.062	2
N/A	S836AH	Seaming Chuck (CHANGE PARTS)	1
21	81S816AH	Retaining Washer (CHANGE PARTS)	1
N/A	L841AH	Knockout Pad (CHANGE PARTS)	1
22	18S826AH	Knock Out Pad Retaining Screw	1

**FOR MORE INFORMATION, CONTACT AMERICAN HOLT AT:**  
781-440-9993 • sales@americanholt.com • www.americanholt.com

# 140S Seamer

AFTER MARKET PARTS FOR:

## MISCELLANEOUS PARTS



**27S816AH**

**TAPERED ROLLER BEARING**



**32S816AH**

**TAPERED ROLLER BEARING**



**239L816AH**

**CAM FOLLOWER, DUAL ROLLER**



**248S816AH**

**BEARING, TAPERED CONICAL,  
MATCHED PAIR, 0.008  
BENCH PLAY**



**293S833AH**

**ELECTRO MAGNETIC BRAKE 12"**

**NOTICE:** All parts offered by American Holt are manufactured by or for American Holt and not by or for the Original Equipment Manufacturer. Part numbers shown that are those of the Original Equipment Manufacturer, if any, are used for reference purposes only. American Holt is an independent supplier of quality replacement parts having no affiliation with any Original Equipment Manufacturer. All prices are subject to change without notice. Copyright ©2020 American Holt Corp. All rights reserved.