

# 180S Seamer

***MRO strategies for OEM  
parts and assemblies***

781-440-9993  
sales@americanholt.com  
www.americanholt.com

FOR INTERNAL USE ONLY.  
SUBJECT TO REVISIONS.





**American Holt is a full-service engineering firm focused on the reverse engineering of high-usage machinery components. Founded in 1995, American Holt manufactures aftermarket replacement parts for machines used by the beverage, food processing, packaging, and paper converting industries. We provide engineered savings to customers around the world.**

**CONTACT:**

American Holt  
203 Carnegie Row  
Norwood, MA 02062  
781-440-9993  
sales@americanholt.com

**HOURS:**

Monday-Friday  
8:00am to 5:00pm EST

**SALES:**

Tom St. Lawrence, President  
Charlene Butts, Sales Manager

**NOTICE:**

*All parts offered by American Holt are manufactured by or for American Holt and not by or for the Original Equipment Manufacturer. Part numbers shown that are those of the Original Equipment Manufacturer, if any, are used for reference purposes only. American Holt is an independent supplier of quality replacement parts having no affiliation with any Original Equipment Manufacturer. All prices are subject to change without notice.*

*Copyright ©2021 American Holt Corp. All rights reserved.*

# Table of Contents

---

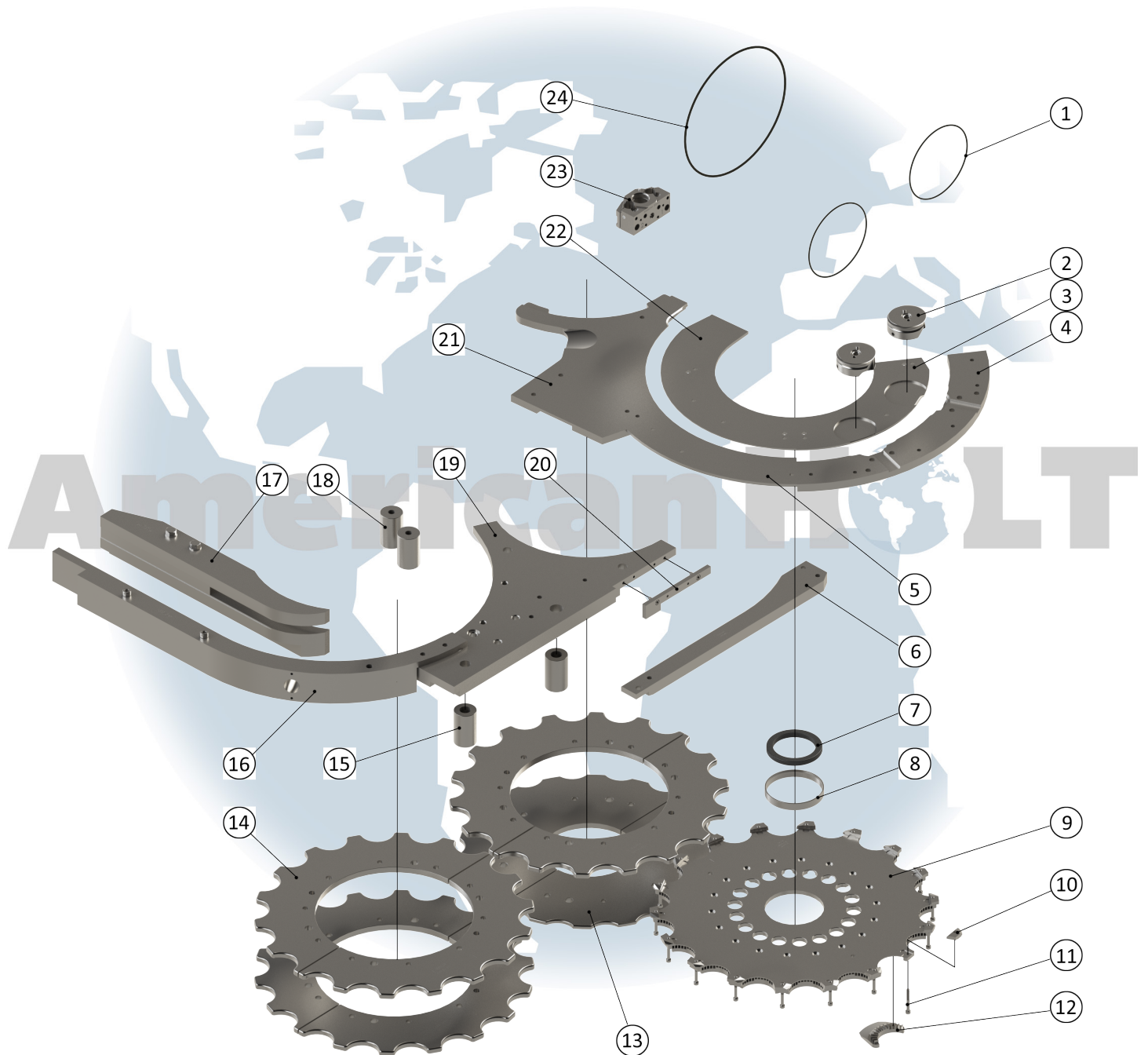
## 180S Seamer

Change Parts 202 X 211 .....	2
Lower Chuck - Bottom - 5S800AH .....	4
Lower Chuck - Top - 6S800AH .....	6
Seaming Lever .....	8
Seaming Spindle Sub-Assembly - 4S800AH .....	10
Seaming Spindle with Knockout Rod .....	12
Miscellaneous Parts .....	14

# 180S Seamer

AFTER MARKET PARTS FOR:

## CHANGE PARTS 202 X 211



**NOTICE:** All parts offered by American Holt are manufactured by or for American Holt and not by or for the Original Equipment Manufacturer. Part numbers shown that are those of the Original Equipment Manufacturer, if any, are used for reference purposes only. American Holt is an independent supplier of quality replacement parts having no affiliation with any Original Equipment Manufacturer. All prices are subject to change without notice. Copyright ©2020 American Holt Corp. All rights reserved.



IN-STOCK AND READY TO SHIP.

\* Item made-to-order

ITEM NO.	PART NO.	DESCRIPTION	QTY
1	42S815AH	O-Ring 5.984 X 6.262 X 0.139	2
N/A	S885AH	Separator Carriage	1
2	124L856AH	Separator Disc & Knife (INCLUDES HARDWARE)	2
3	59S873AH	Cap Guide - Inner	1
4	60S873AH	Cap Guide - Outer	1
5	55S873AH	Cap Guide Rail - Outer	1
6	3S884AH	Can Feed Inlet Rail	1
N/A	25S843AH	Can Feed Inlet Rail Bracket	1
7	21S815AH	Oil Seal 3.250 X 4.250 X 0.438	1
N/A	17S853AH	Sleeve	1
9	31S870AH	Feed Turret Plate	1
10	10S859AH / 11S859AH	Cap Pusher	18
N/A	S870AH	Feed Turret	1
11	16S826AH	Cap Pusher Screw M6 X 1 X 50MM	18
N/A	14S870AH	Feed Turret Insert	18
N/A	6S808AH	Lower Seaming & Discharge Turret	1
14	1S808AH	Seaming & Discharge Turret - Split	3
N/A	2S853AH	Spacer 0.875 X 1.750 X 2.906	2
N/A	10S828AH	Can Feed & Discharge Rail Eccentric	1

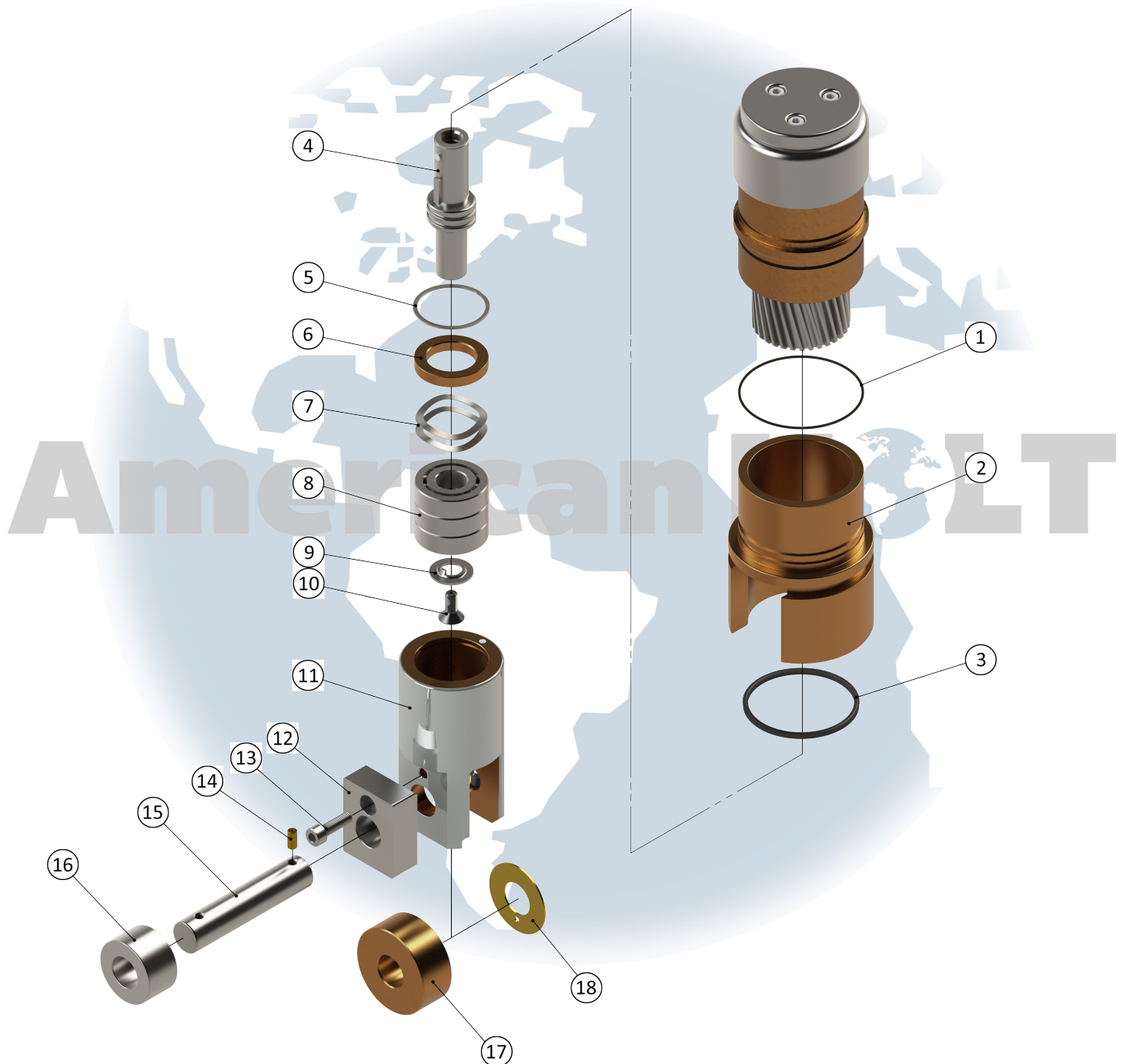
ITEM NO.	PART NO.	DESCRIPTION	QTY
16	13S845AH	Outer Discharge Rail (CURVED) (INCLUDES HARDWARE)	1
N/A	156S843AH	Discharge Rail Support Plate	1
17	17S845AH	Inner Discharge Rail (IN- CLUDES HARDWARE)	1
N/A	31S853AH	Spacer 0.531 X 1.750 X 2.812	2
N/A	S845AH	Discharge Rail - Outer	1
N/A	16S828AH	Discharge Rail Outer Eccen- tric	1
N/A	73S816AH	Outer Discharge Rail Adjust- ment Bushing	1
N/A	72S816AH	Outer Discharge Rail Pivot Bushing	1
N/A	3S883AH / 12S883AH	Can Feed & Discharge Rail	1
20	2S883AH	Can Feed & Discharge Rail Insert (INCLUDES HARDWARE)	1
21	56S873AH	Cap Guide Section - Outer	1
22	54S873AH	Cap Guide Rail - Inner	1
N/A	S836AH	Seaming Chuck	18
N/A	20S842AH	Seaming Lever (INCLUDES HARDWARE)	18
24	34S815AH	O-Ring 10.475 X 10.895 X 0.210	1
N/A	S842AH	Seaming Chuck Bell	1

**FOR MORE INFORMATION, CONTACT AMERICAN HOLT AT:**  
781-440-9993 • sales@americanholt.com • www.americanholt.com

# 180S Seamer

AFTER MARKET PARTS FOR:

## LOWER CHUCK - BOTTOM - 5S800AH



**NOTICE:** All parts offered by American Holt are manufactured by or for American Holt and not by or for the Original Equipment Manufacturer. Part numbers shown that are those of the Original Equipment Manufacturer, if any, are used for reference purposes only. American Holt is an independent supplier of quality replacement parts having no affiliation with any Original Equipment Manufacturer. All prices are subject to change without notice. Copyright ©2020 American Holt Corp. All rights reserved.

IN-STOCK AND READY TO SHIP.

\* Item made-to-order

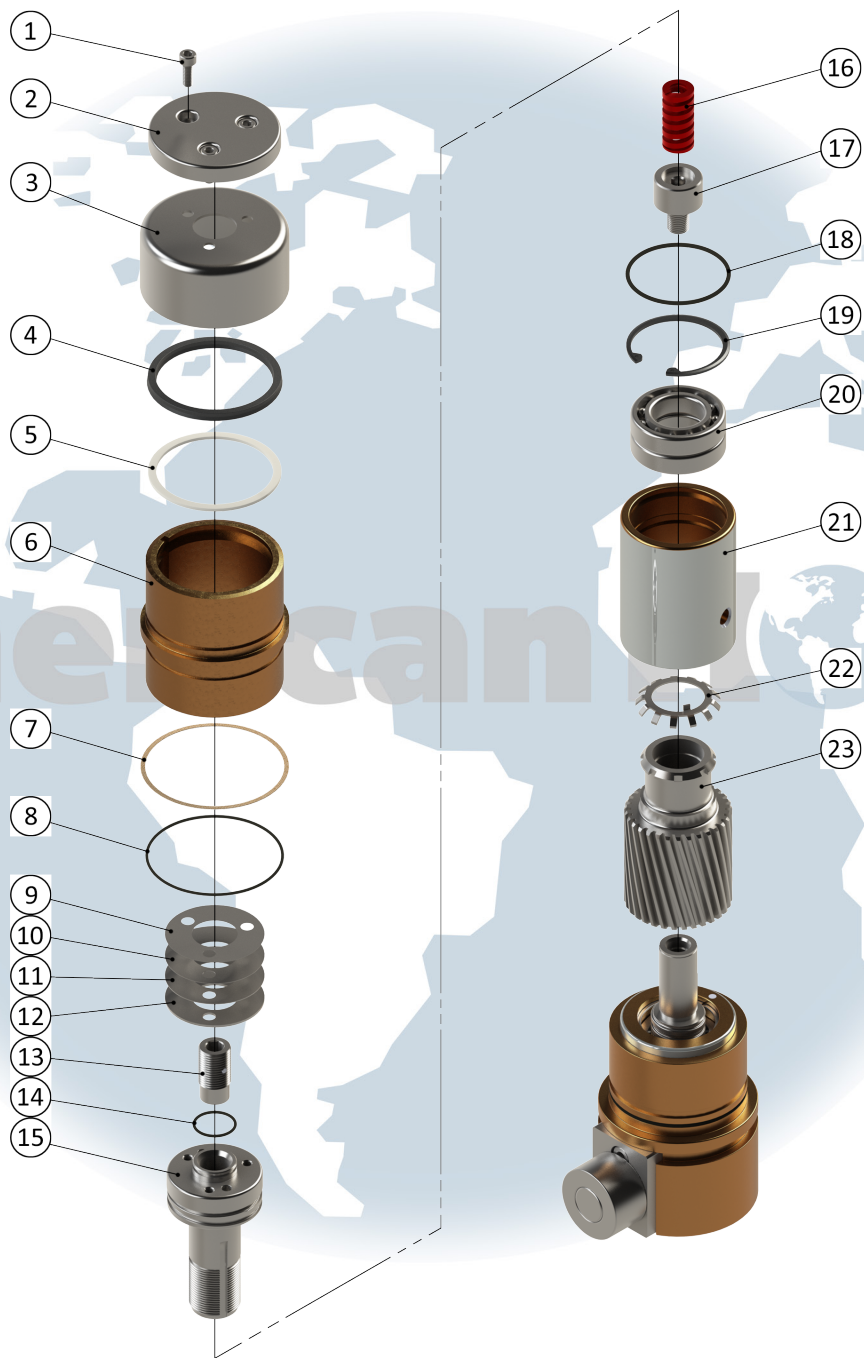
ITEM NO.	PART NO.	DESCRIPTION	QTY
1	20L415AH	O-Ring 2.989 X 3.129 X 0.070	1
2	17S827AH	Lower Chuck Slide Bearing - Bottom	1
3	84L815AH	Oil Seal 2.6250 X 2.8750 X 0.1250	1
4	8S827AH	Lower Chuck Mandrel - Bottom (INCLUDES HARDWARE)	1
4.1	56L828AH	Dowel Pin 0.187 X 0.250	1
5	21L817AH	Snap Ring 1.850 Bore	1
6	26L827AH	Lower Chuck Pump Ring	1
7	115L816AH	Wavy Spring Washer 1.404 X 1.819 X 0.020	2
8	18L816AH	Ball Bearing 0.7874 X 1.850 X 0.5512	1
9	78L641AH	Retainer	1
10	29L826AH	Retaining Screw	1
11	4S827AH	Lower Chuck Slide - Bottom (INCLUDES HARDWARE)	1
12	6S827AH	Lower Chuck Slide Bock	1
13	Socket HD Cap Screw SS M8 X 1.25 X 16 NYLOK	Screw	1
14	17S814AH	Lower Chuck Slide Orifice	1
15	1S829AH	Lower Chuck Cam Roll Pin	1
15.1	57L826AH	Pressure Plug	1
16	16P346AH	Cam Roll	1
17	2S829AH	Lower Chuck Cam Roll	1
18	93L816AH	Washer 0.8916 X 1.9750 X 0.0500	1

**FOR MORE INFORMATION, CONTACT AMERICAN HOLT AT:**  
781-440-9993 • sales@americanholt.com • www.americanholt.com

# 180S Seamer

AFTER MARKET PARTS FOR:

## LOWER CHUCK - TOP - 6S800AH



**NOTICE:** All parts offered by American Holt are manufactured by or for American Holt and not by or for the Original Equipment Manufacturer. Part numbers shown that are those of the Original Equipment Manufacturer, if any, are used for reference purposes only. American Holt is an independent supplier of quality replacement parts having no affiliation with any Original Equipment Manufacturer. All prices are subject to change without notice. Copyright ©2020 American Holt Corp. All rights reserved.

IN-STOCK AND READY TO SHIP.

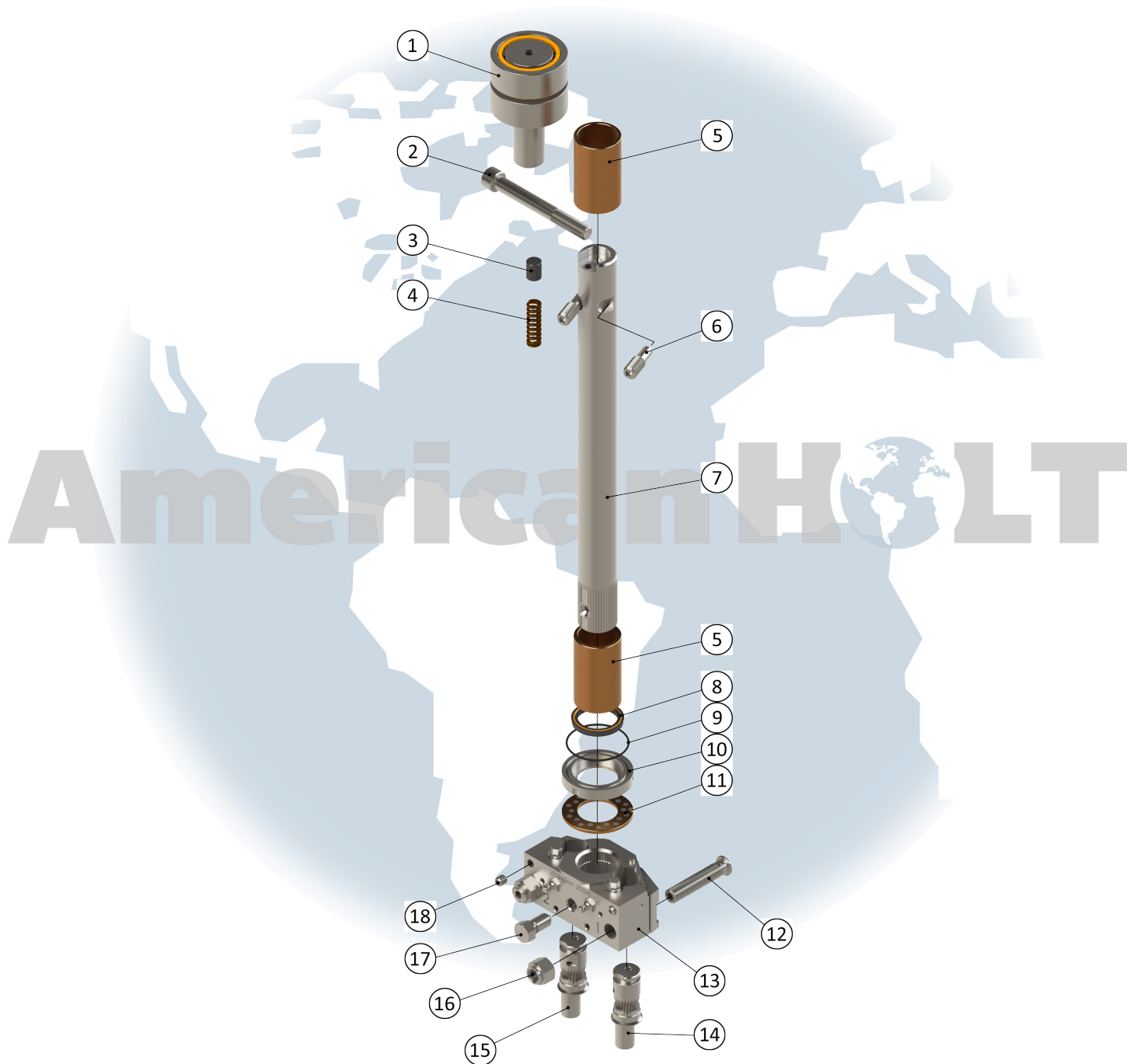
ITEM NO.	PART NO.	DESCRIPTION	QTY
1	Socket HD Cap Screw SS M6 X 1.0 X 16	Screw	3
2	3S827AH	Lower Chuck Plate	1
3	4L427AH	Lower Chuck Slide Shield - Top	1
4	58S815AH	Oil Seal 2.625 X 3.000 X 0.187	1
5	56S815AH	Back-Up Ring 2.64 X 3.00 X 0.06	1
6	14S827AH	Lower Chuck Slide Bearing - Top	1
7	74S815AH	Lower Chuck Gasket	1
8	20L415AH	O-Ring 2.989 X 3.129 X 0.070	1
9	54L416-2AH	Shim 0.002 Thick	2
10	54L416-5AH	Shim 0.005 Thick	2
11	54L416-10AH	Shim 0.010 Thick	2
12	54L416-30AH	Shim 0.030 Thick	2
13	31S826AH	Lower Chuck Spring Screw (INCLUDES HARDWARE)	1
14	55S815AH	O-Ring 0.864 X 1.004 X 0.070	1
15	16S827AH	Lower Chuck Mandrel - Top	1
16	8S840AH	Lower Chuck Spring	1
17	9L426AH	Lower Chuck Bottom Mandrel Screw	1
18	21L415AH	O-Ring 2.175 X 2.381 X 0.103	1
19	12L417AH	Retaining Ring 2.188	1
20	55L416AH	Ball Bearing 1.1811 X 2.1654 X 1.0236 Pair Wide	1
21	15S827AH	Lower Chuck Slide - Top	1
21.1	32L847AH	Woodruff Key (INCLUDES HARDWARE)	1
22	18L616AH	Bearing Lockwasher W-06	1
23	14S823AH	Lower Chuck Gear 31T 14P LH	1

**FOR MORE INFORMATION, CONTACT AMERICAN HOLT AT:**  
781-440-9993 • sales@americanholt.com • www.americanholt.com

# 180S Seamer

AFTER MARKET PARTS FOR:

## SEAMING LEVER



**NOTICE:** All parts offered by American Holt are manufactured by or for American Holt and not by or for the Original Equipment Manufacturer. Part numbers shown that are those of the Original Equipment Manufacturer, if any, are used for reference purposes only. American Holt is an independent supplier of quality replacement parts having no affiliation with any Original Equipment Manufacturer. All prices are subject to change without notice. Copyright ©2020 American Holt Corp. All rights reserved.

IN-STOCK AND READY TO SHIP.

ITEM NO.	PART NO.	DESCRIPTION	QTY
1	239L816AH	Dual Roller Cam Follower - Stud Type	1
N/A	8S841AH	Seaming Cam Lever	1
2	Socket HD Cap Screw SS M12 X 1.75 X 100	Screw	1
3	9L828AH	Seaming Cam Lever Lift Plug	1
4	6L840AH	Seaming Cam Lever Lift Spring	1
N/A	19S826AH	Adjustment Screw	1
5	140S816AH	Oilite Bushing 1.252 X 1.502 X 2.500	2
6	9S826AH	Seaming Cam Lever Adjustment Screw	2
7	28S844AH	Seaming Lever Shaft	1
8	96S815AH	Oil Seal	1
9	19S415AH	O-Ring 1.875 X 2.000 X 0.070	1
10	72S817AH	O-Ring Retainer	1
11	23S816AH	Washer 1.253 X 2.250 X 0.125	1
12	48S826AH	Seaming Roll Adjustment Screw	2
13	S842AH (20S842AH SHOWN)	Seaming Lever (INCLUDES HARDWARE)	1
14	30S841AH	Seaming Roll Pin 1st Operation (INCLUDES HARDWARE)	1
15	29S841AH	Seaming Roll Pin 2nd Operation (INCLUDES HARDWARE)	1
16	104S816AH	Locknut 1/2-13 SS	2
17	32S826AH	Seaming Lever Cone Point Screw SS	1
18	NPT-PLUG SS 0.062-27	Hydraulic Fitting	2

**FOR MORE INFORMATION, CONTACT AMERICAN HOLT AT:**  
781-440-9993 • sales@americanholt.com • www.americanholt.com



# 180S Seamer

AFTER MARKET PARTS FOR:

## SEAMING SPINDLE SUB-ASSEMBLY - 4S800AH



\*Also available as a rebuild  
program under part number  
4S800-REBUILDAH

**NOTICE:** All parts offered by American Holt are manufactured by or for American Holt and not by or for the Original Equipment Manufacturer. Part numbers shown that are those of the Original Equipment Manufacturer, if any, are used for reference purposes only. American Holt is an independent supplier of quality replacement parts having no affiliation with any Original Equipment Manufacturer. All prices are subject to change without notice. Copyright ©2020 American Holt Corp. All rights reserved.

IN-STOCK AND READY TO SHIP.

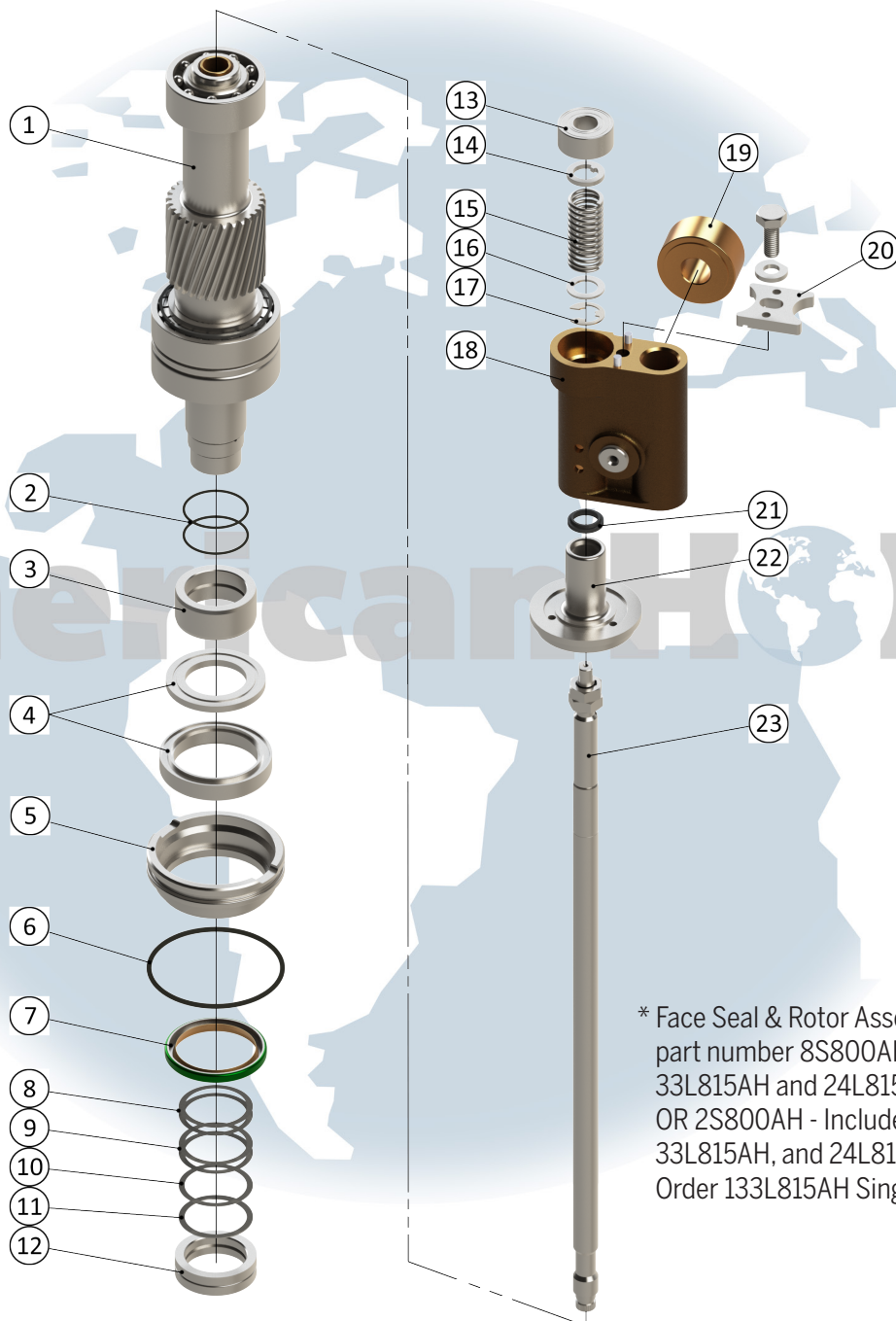
ITEM NO.	PART NO.	DESCRIPTION	QTY
1	1P117AH	Snap Ring 1.1875 Shaft SS	1
2	34L816AH	Ball Bearing 1.1811 X 2.4409 X 0.9375	1
3	45S844AH	Seaming Spindle & Gear 31T 14P RH	1
3.1	48L816AH	Oilite Bushing 0.625 X 0.750 X 1.000	2
4	115S816AH	Tapered Roller Bearing Assembly 1.6880 X 3.1560 X 2.1870	1

**FOR MORE INFORMATION, CONTACT AMERICAN HOLT AT:**  
781-440-9993 • [sales@americanholt.com](mailto:sales@americanholt.com) • [www.americanholt.com](http://www.americanholt.com)

# 180S Seamer

AFTER MARKET PARTS FOR:

## SEAMING SPINDLE WITH KNOCKOUT ROD



\* Face Seal & Rotor Assembly available under part number 8S800AH - Includes 85S817AH, 33L815AH and 24L815AH (no lip seal) OR 2S800AH - Includes 65S817AH, 33L815AH, and 24L815AH (no lip seal). Order 133L815AH Single Lip Seal separately.

**NOTICE:** All parts offered by American Holt are manufactured by or for American Holt and not by or for the Original Equipment Manufacturer. Part numbers shown that are those of the Original Equipment Manufacturer, if any, are used for reference purposes only. American Holt is an independent supplier of quality replacement parts having no affiliation with any Original Equipment Manufacturer. All prices are subject to change without notice. Copyright ©2020 American Holt Corp. All rights reserved.

IN-STOCK AND READY TO SHIP.

ITEM NO.	PART NO.	DESCRIPTION	QTY
1	4S800AH	Seaming Spindle	1
2	28L815AH	O-Ring 1.500 X 1.625 X 0.062	2
3	503L853AH	Seal Sleeve - Top	1
4	33L815AH	Face Seal & Rotor	1
5	85S817AH	Seaming Spindle Lower Bearing Retainer	1
	65S817AH	Seaming Spindle Lower Bearing Retainer	1
6	24L815AH	O-Ring 3.125 X 3.375 X 0.125	1
7	97S815AH	Oil Seal	1
8	129L816-3AH	Shim 0.003 Thick	2
9	129L816-5AH	Shim 0.005 Thick	2
10	129L816-10AH	Shim 0.010 Thick	1
11	129L816-32AH	Shim 0.032 Thick	1
12	505L853AH (SHOWN)	Seal Sleeve - Bottom (204+)	1
	504L853AH	Seal Sleeve - Bottom (202 and under)	1
13	15L816AH	Ball Bearing 0.5906 X 1.3780 X 0.6250	1
14	49L816AH	Keyed Washer 0.601 X 1.187 X 0.125	1
15	5L840AH	Spring 0.875 X 1.912 Free Length	1
16	136L816AH	Washer 0.5930 X 0.9375 X 0.0625	1
17	1L617AH	Retaining Ring 0.625 Shaft	1
18	45S841AH	Knockout Carrier (INCLUDES HARDWARE)	1
18.1	3L829AH	Knockout Cam Roll Pin	1
19	12L629AH	Knockout Cam Roll	1
20	34L817AH	Knockout Rod Bearing Retainer	1
21	77L815AH	Wiper Ring	1
22	64L841AH	Knockout Carrier Guide Flange	1
23	3S844AH	Knockout Rod (INCLUDES HARDWARE)	1

**FOR MORE INFORMATION, CONTACT AMERICAN HOLT AT:**  
781-440-9993 • sales@americanholt.com • www.americanholt.com

# 180S Seamer

AFTER MARKET PARTS FOR:

## MISCELLANEOUS PARTS



**27S816AH**

**TAPERED ROLLER BEARING**



**32S816AH**

**TAPERED ROLLER BEARING**



**239L816AH**

**CAM FOLLOWER, DUAL ROLLER**



**248S816AH**

**BEARING, TAPERED CONICAL,  
MATCHED PAIR, 0.008  
BENCH PLAY**



**293S833AH**

**ELECTRO MAGNETIC BRAKE 12"**

**NOTICE:** All parts offered by American Holt are manufactured by or for American Holt and not by or for the Original Equipment Manufacturer. Part numbers shown that are those of the Original Equipment Manufacturer, if any, are used for reference purposes only. American Holt is an independent supplier of quality replacement parts having no affiliation with any Original Equipment Manufacturer. All prices are subject to change without notice. Copyright ©2020 American Holt Corp. All rights reserved.