

# 40P Seamer



*MRO strategies for OEM  
parts and assemblies*

781-440-9993

[sales@americanholt.com](mailto:sales@americanholt.com)

[www.americanholt.com](http://www.americanholt.com)

FOR INTERNAL USE ONLY.  
SUBJECT TO REVISIONS.



**American Holt is a full-service engineering firm focused on the reverse engineering of high-usage machinery components. Founded in 1995, American Holt manufactures aftermarket replacement parts for machines used by the beverage, food processing, packaging, and paper converting industries. We provide engineered savings to customers around the world.**

**CONTACT:**

American Holt  
203 Carnegie Row  
Norwood, MA 02062  
781-440-9993  
sales@americanholt.com

**HOURS:**

Monday-Friday  
8:00am to 5:00pm EST

**SALES:**

Tom St. Lawrence, President  
Charlene Butts, Sales Manager

**NOTICE:**

*All parts offered by American Holt are manufactured by or for American Holt and not by or for the Original Equipment Manufacturer. Part numbers shown that are those of the Original Equipment Manufacturer, if any, are used for reference purposes only. American Holt is an independent supplier of quality replacement parts having no affiliation with any Original Equipment Manufacturer. All prices are subject to change without notice.*

*Copyright ©2024 American Holt Corp. All rights reserved.*

# Table of Contents **40P Seamer**

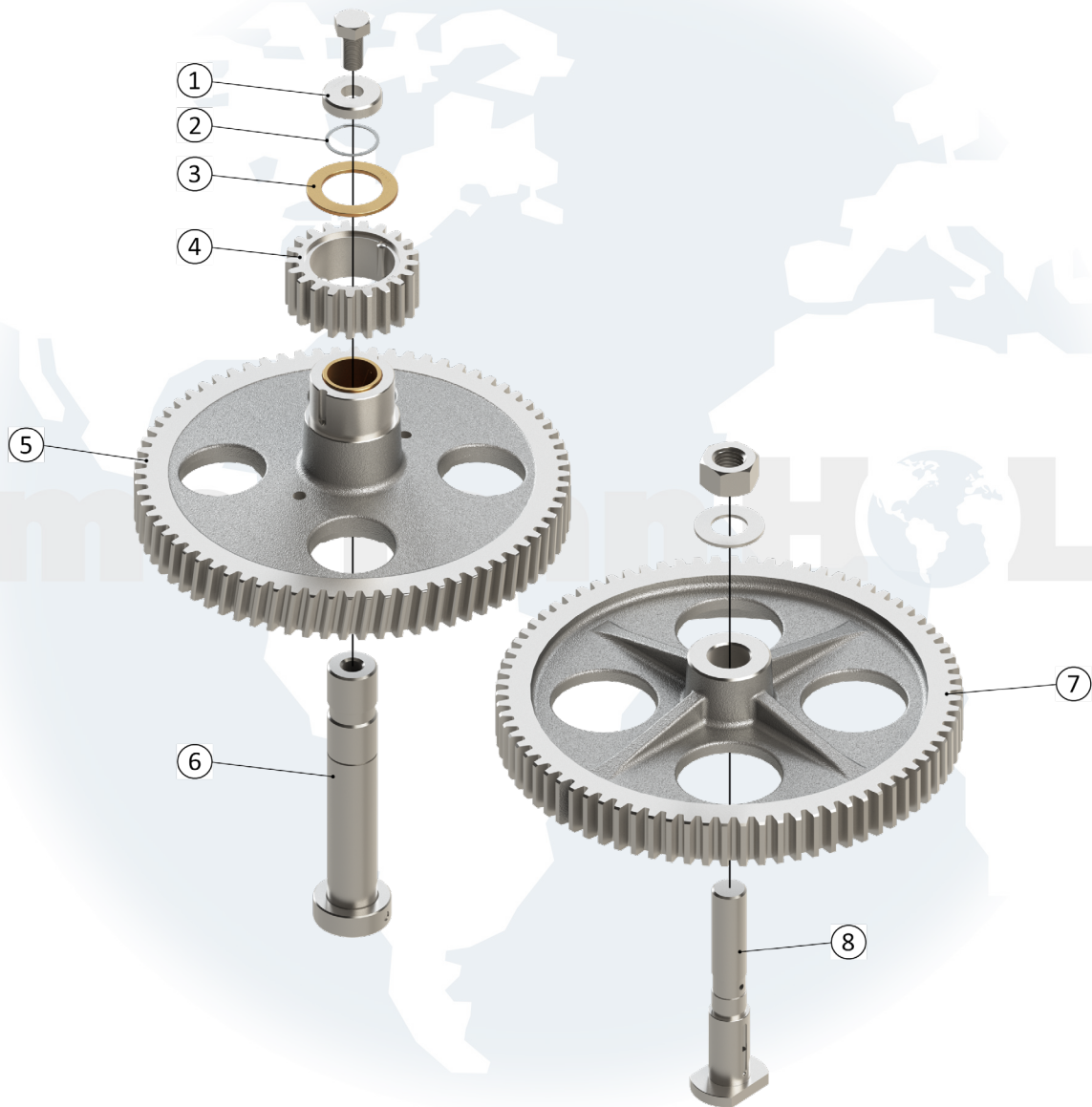
---

INTERMEDIATE GEAR.....	2
SEAMING TURRET .....	4
LOWER TURRET.....	6
FEED AND DISCHARGE TURRET.....	8
CAP FEED .....	10
DRIVE CASE ELECTRICAL BREAK.....	12
STEAM VACUUM.....	14

# 40P Seamer

AFTER MARKET PARTS FOR:

## INTERMEDIATE GEAR



**NOTICE:** All parts offered by American Holt are manufactured by or for American Holt and not by or for the Original Equipment Manufacturer. Part numbers shown that are those of the Original Equipment Manufacturer, if any, are used for reference purposes only. American Holt is an independent supplier of quality replacement parts having no affiliation with any Original Equipment Manufacturer. All prices are subject to change without notice. Copyright ©2019 American Holt Corp. All rights reserved.

IN-STOCK AND READY TO SHIP.

## INTERMEDIATE GEAR

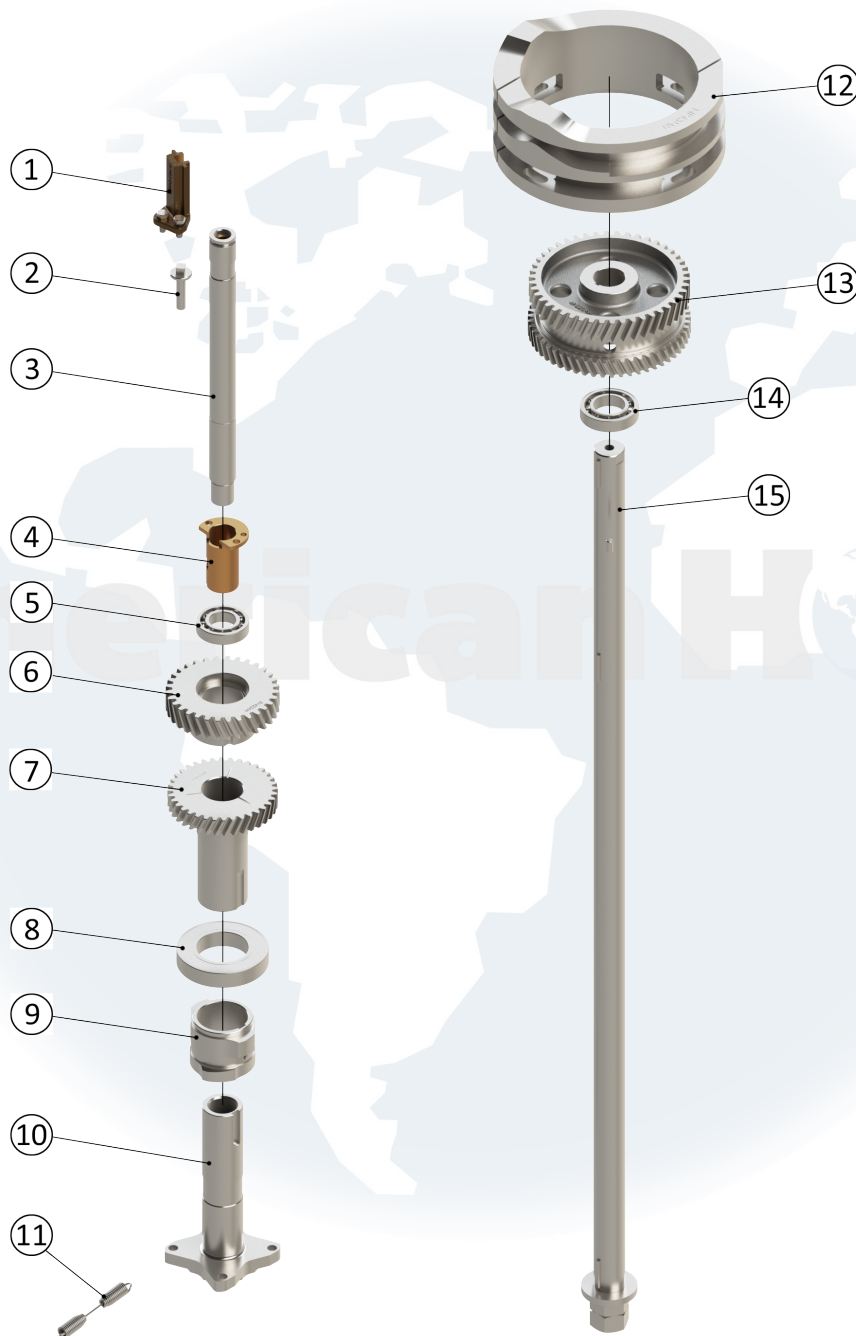
ITEM NO.	PART NO.	DESCRIPTION	QTY
1	73P290AH	Timing Star Washer	1
2	24P417AH	Spiral Retaining Ring	1
3	31P416AH	Thrust Washer	1
4	13P423AH	Main Intermediate Pinion Gear (INCLUDES HARDWARE)	1
5	12P423AH	Intermediate Gear (INCLUDES HARDWARE)	1
6	3P464AH	Intermediate Gear Stud (INCLUDES HARDWARE)	1
6.1	4P253AH	Thrust Collar (INCLUDES HARDWARE)	1
7	1P423AH	Cap Feed Intermediate Gear 78T	1
8	22P264AH	Cap Feed Intermediate Stud GR (INCLUDES HARDWARE)	1

**FOR MORE INFORMATION, CONTACT AMERICAN HOLT AT:**  
781-440-9993 • sales@americanholt.com • www.americanholt.com

# 40P Seamer

AFTER MARKET PARTS FOR:

## SEAMING TURRET



**NOTICE:** All parts offered by American Holt are manufactured by or for American Holt and not by or for the Original Equipment Manufacturer. Part numbers shown that are those of the Original Equipment Manufacturer, if any, are used for reference purposes only. American Holt is an independent supplier of quality replacement parts having no affiliation with any Original Equipment Manufacturer. All prices are subject to change without notice. Copyright ©2019 American Holt Corp. All rights reserved.

IN-STOCK AND READY TO SHIP.

\* Item made-to-order

## SEAMING TURRET

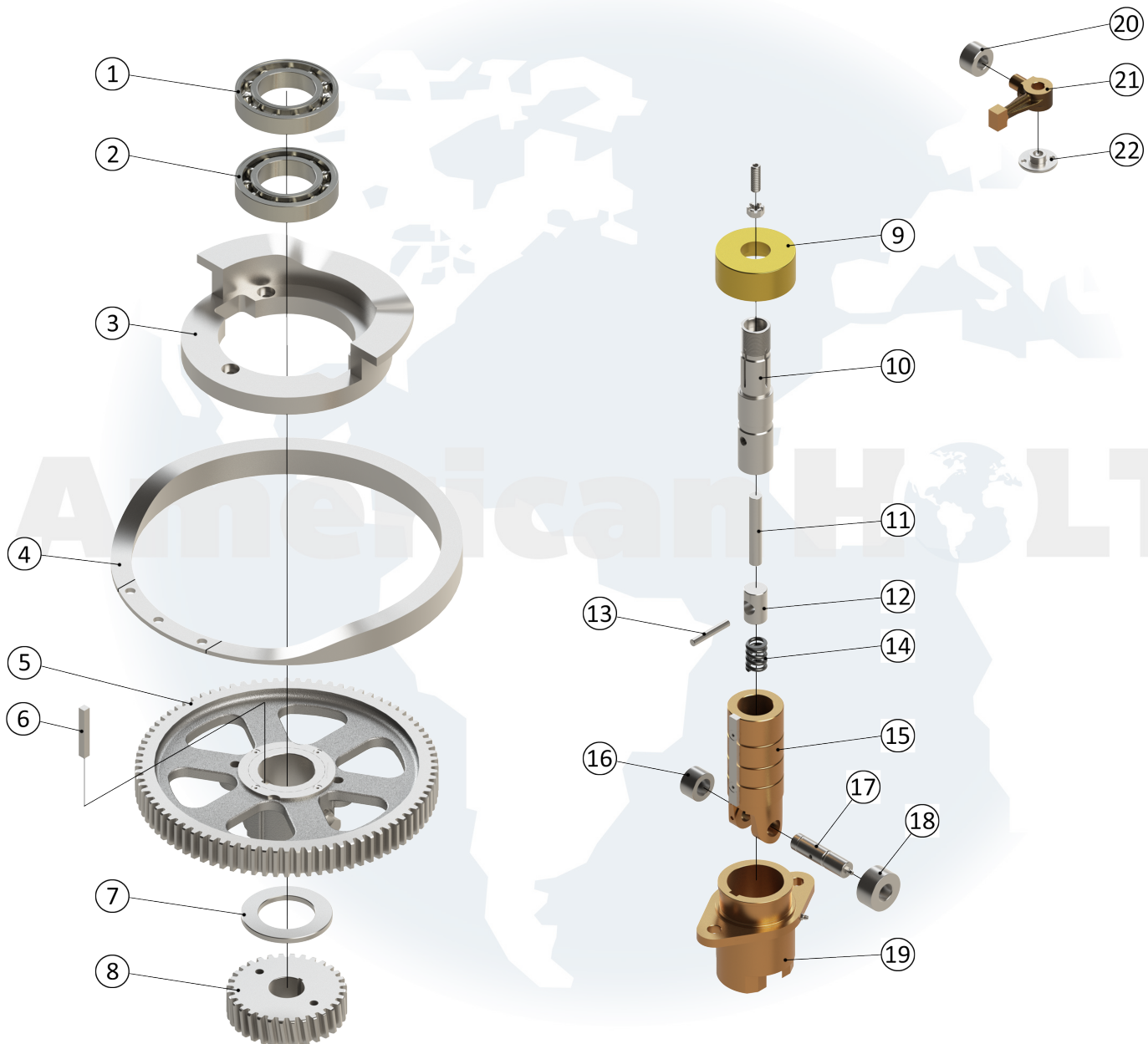
ITEM NO.	PART NO.	DESCRIPTION	QTY
1	77P243AH	Knockout Rod Lever Guide (INCLUDES HARDWARE)	4
2	20P228AH	D.S. Spindle Adjustment Screw	4
3	118P244AH	Upper Chuck Spindle (INCLUDES HARDWARE)	4
4	30P241AH	Upper Turret Adjustment Sleeve	4
5	17V241AH	Upper Spindle Ball Bearing	4
6	3V423AH	D.S. Head Drive Gear	4
6.1	3P247AH	Discharge Gear Key (INCLUDES HARDWARE)	4
7	112P223AH	D.S. Cam Drive Gear	4
8	26P216AH	Ball Bearing	4
N/A	604P641AH	Lower Head Bearing	4
9	11P820AH	D.S. Cam	4
9.1	2P247AH	Key (INCLUDES HARDWARE)	4
9.2	22P241AH	D.S. Cam Set Screw	4
10	1P241AH	D.S. Head Sleeve Assembly (INCLUDES HARDWARE)	4
11	21P241AH	Head Spring	4
12	14P420AH	Cap Centering & Knockout Cam	1
N/A	67P241AH	Upper Turret Bearing	1
13	104P223AH	D.S. Center Gear	1
14	28P216AH	Upper Turret Ball Bearing	1
15	3P444AH	Center Shaft (INCLUDES HARDWARE)	1
	16P228AH (NOT SHOWN)	Dowel Pin .373 X .375 X .750 GL	9
N/A	60P241AH	Upper Turret	1
N/A	1P208AH	Starwheel Hub	1
N/A	2P444AH	Turret Hollow Shaft	1

**FOR MORE INFORMATION, CONTACT AMERICAN HOLT AT:**  
781-440-9993 • sales@americanholt.com • www.americanholt.com

# 40P Seamer

AFTER MARKET PARTS FOR:

## LOWER TURRET



**NOTICE:** All parts offered by American Holt are manufactured by or for American Holt and not by or for the Original Equipment Manufacturer. Part numbers shown that are those of the Original Equipment Manufacturer, if any, are used for reference purposes only. American Holt is an independent supplier of quality replacement parts having no affiliation with any Original Equipment Manufacturer. All prices are subject to change without notice. Copyright ©2019 American Holt Corp. All rights reserved.

IN-STOCK AND READY TO SHIP.

\* Item made-to-order

## LOWER TURRET

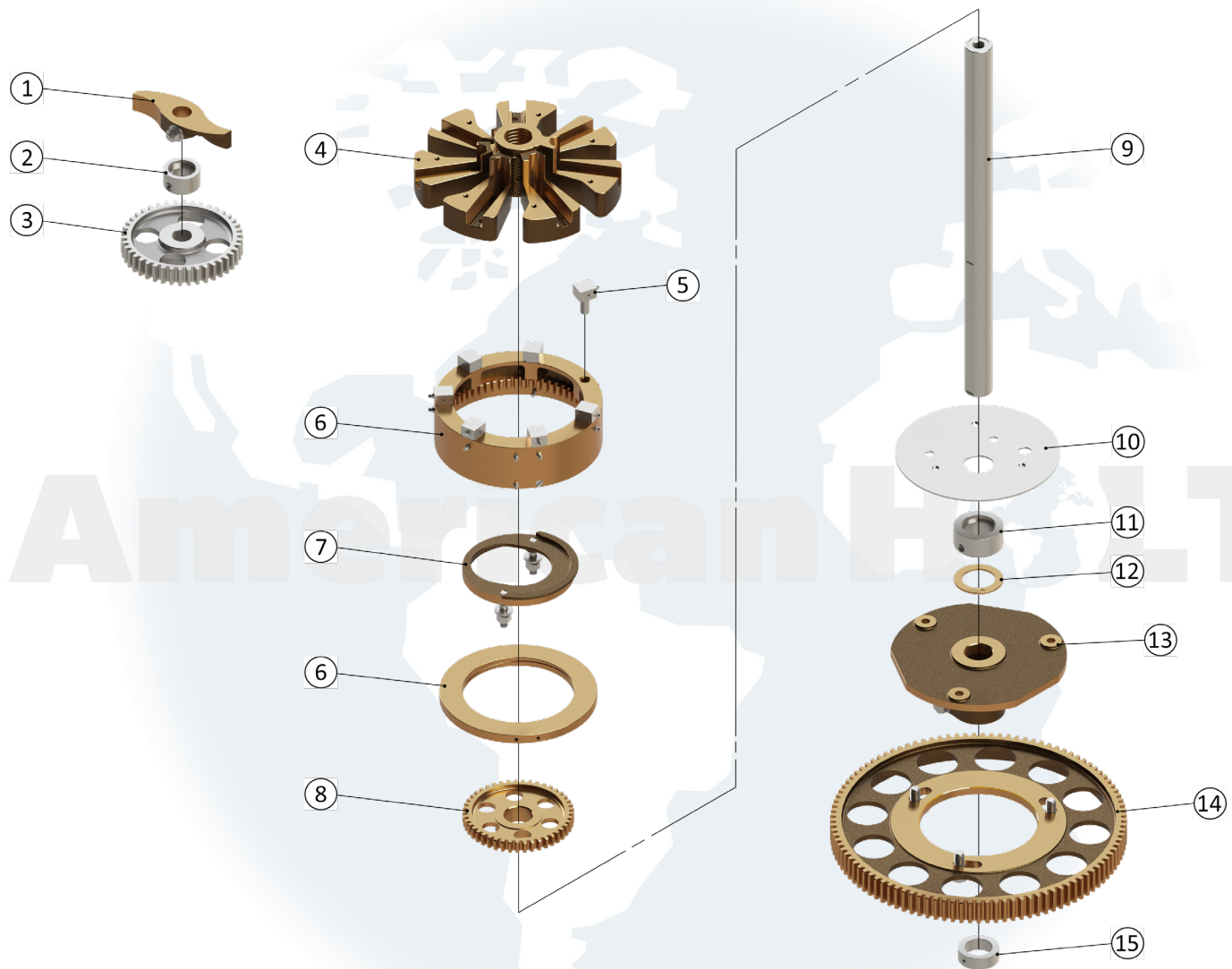
ITEM NO.	PART NO.	DESCRIPTION	QTY
1	18V241AH	Lower Head Bearing	1
N/A	14P202AH	Lower Turret Bearing	1
2	26P216AH	Ball Bearing	1
3	13P420AH	Lower Chuck Return Cam	1
4	57P420AH	Lower Chuck Cam with Plate 62P420AH	1
4.1	62P420AH	Cam Plate	1
5	107P223AH	Main Turret Gear (INCLUDES HARDWARE)	1
5.1	602P616AH	Adjustment Screw	2
6	38P216AH	Turret Gear Key	1
7	14P216AH	Thrust Washer	1
8	45P223AH	Center Lower Drive Gear 32T 6P	1
N/A	3P203AH	Lower Turret	1
N/A	1P248AH	Lower Turret Guard Pin	2
N/A	2P454AH	Lower Turret Guard	1
9	4P206AH	Lower Chuck Cap	4
10	1P227CAH	Lower Chuck Mandrel Assembly	4
10.1	1P254AH	Socket Head Set Screw	4
10.2	7P228AH	Slotted Nut	4
11	22P228AH	Spring Adjusting Pin	4
12	24P228AH	Lower Chuck Spacer	4
13	23P228AH	Lower Chuck Locking Pin	4
14	15P240AH	Lower Chuck Spring - 1168 LBS	4
15	6P206AH	Lower Chuck Slide Assembly (INCLUDES HARDWARE)	4
15.1	1P210AH	Lower Chuck Slide Key	4
16	601P629AH	Cam Roll	4
17	4L629AH	Cam Roll Pin (INCLUDES HARDWARE)	4
18	3P229AH	Lower Chuck Cam Roll	4
19	602P641AH	Lower Turret Bushing (INCLUDES HARDWARE)	4
20	17P346AH	Cam Roll	4
21	71P243AH	Knockout Rod Lever	4
N/A	119P244AH	Knockout Rod	4
22	49P244AH	Knockout Plate - 211 To 603 Diameter	4

**FOR MORE INFORMATION, CONTACT AMERICAN HOLT AT:**  
781-440-9993 • sales@americanholt.com • www.americanholt.com

# 40P Seamer

AFTER MARKET PARTS FOR:

## FEED AND DISCHARGE TURRET



**NOTICE:** All parts offered by American Holt are manufactured by or for American Holt and not by or for the Original Equipment Manufacturer. Part numbers shown that are those of the Original Equipment Manufacturer, if any, are used for reference purposes only. American Holt is an independent supplier of quality replacement parts having no affiliation with any Original Equipment Manufacturer. All prices are subject to change without notice. Copyright ©2019 American Holt Corp. All rights reserved.

IN-STOCK AND READY TO SHIP.

## FEED AND DISCHARGE TURRET

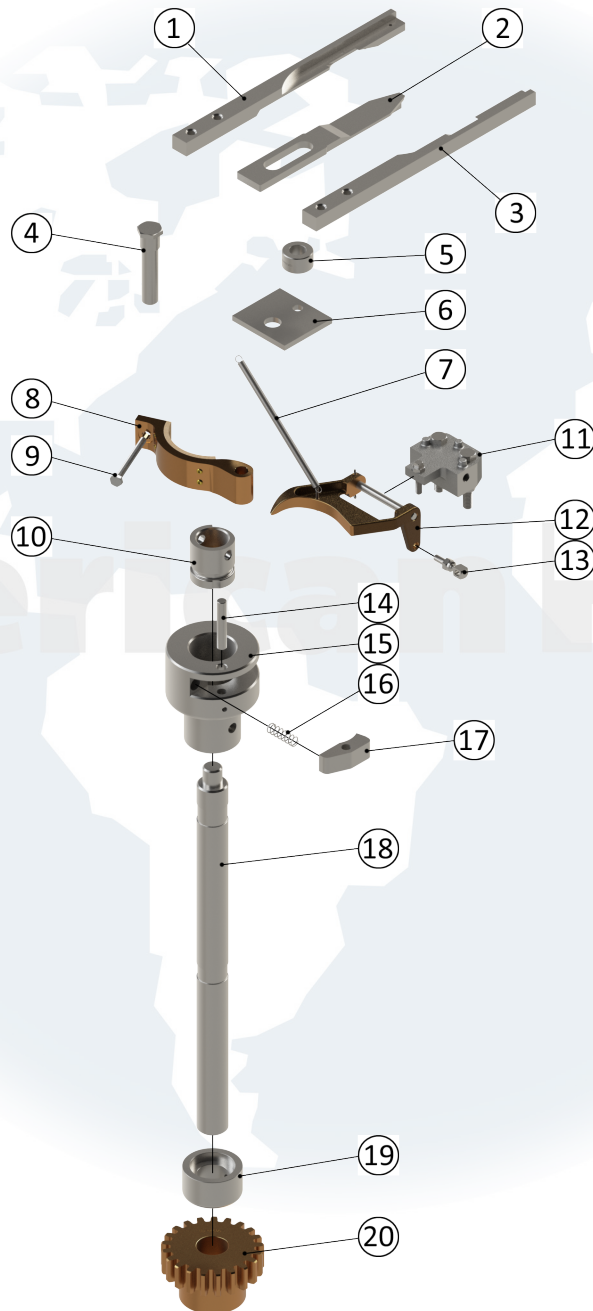
ITEM NO.	PART NO.	DESCRIPTION	QTY
1	4P245AH	Discharge Lever (INCLUDES HARDWARE)	1
1.1	15P228AH	Discharge Lever Clamp Pin	1
N/A	6P244AH	Discharge Shaft	1
N/A	6P443AH	Discharge Table Bearing	1
N/A	5P443AH	Discharge Table	1
2	3P253AH	Collar (INCLUDES HARDWARE)	1
3	46P223AH	Discharge Gear	1
N/A	23P226AH	Cap Screw - For Feed Turret Shaft	1
N/A	9P663AH	Feed Arm Washer	1
4	10-16P663AH	Feed Arm Assembly (10P663AH thru 16P663AH) (INCLUDES HARDWARE)	1
5	18P263AH	Feed Arm Slide (INCLUDES HARDWARE)	7
6	18P623AH	Internal Feed Gear (INCLUDES HARDWARE)	1
6.1	5P662AH	Internal Gear Liner	1
7	6P662AH	Feed Eccentric (INCLUDES HARDWARE)	1
8	19P623AH	Feed Arms Drive Gear 45T 7DP	1
9	11P644AH	Atmospheric Shaft	1
10	113P643AH	Feed Frame Plate	1
N/A	26P443AH	Discharge Table Wear Plate	1
N/A	7P644AH	Feed Table Support Pin	1
N/A	30P443AH	Feed Frame	1
11	1P253AH	Collar	1
12	25P416AH	Feed Turret Thrust Washer	1
13	13P223AH	Feed Turret Gear Hub (INCLUDES HARDWARE)	1
14	8P623AH	Feed Turret Gear (INCLUDES HARDWARE)	1
15	6P253AH	Collar (INCLUDES HARDWARE)	1

**FOR MORE INFORMATION, CONTACT AMERICAN HOLT AT:**  
781-440-9993 • sales@americanholt.com • www.americanholt.com

# 40P Seamer

AFTER MARKET PARTS FOR:

## CAP FEED



**NOTICE:** All parts offered by American Holt are manufactured by or for American Holt and not by or for the Original Equipment Manufacturer. Part numbers shown that are those of the Original Equipment Manufacturer, if any, are used for reference purposes only. American Holt is an independent supplier of quality replacement parts having no affiliation with any Original Equipment Manufacturer. All prices are subject to change without notice. Copyright ©2019 American Holt Corp. All rights reserved.

IN-STOCK AND READY TO SHIP.

## CAP FEED

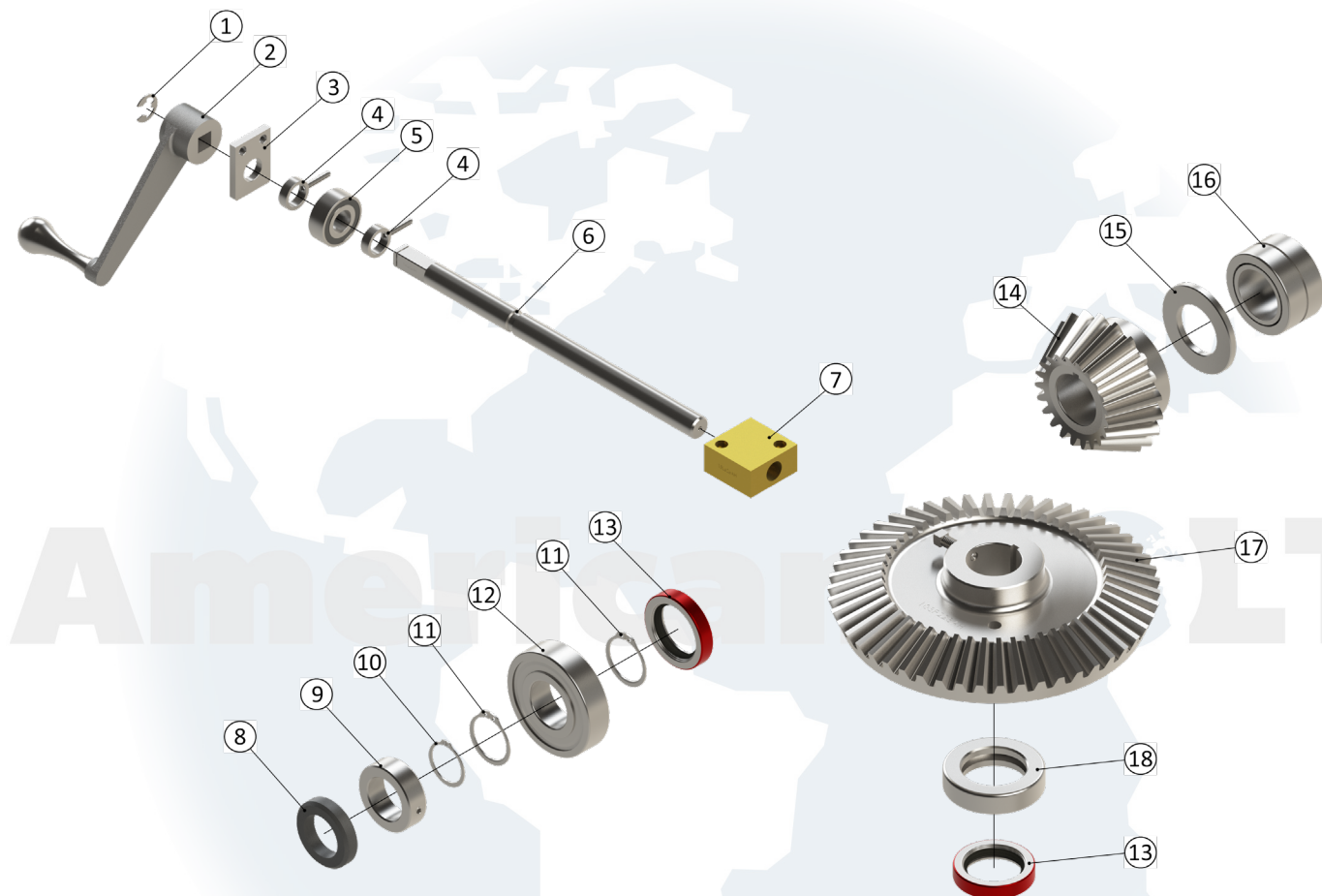
ITEM NO.	PART NO.	DESCRIPTION	QTY
1	7P256AH	Parting Knife - LH	1
2	14P256AH	Center Pusher	1
3	8P256AH	Parting Knife - RH	1
N/A	183P244AH	Upper Cap Feed Shaft	1
4	12P256AH	Slide Bolt	1
N/A	4P256AH	Connecting Link	1
N/A	5P256AH	Cap Feed Crank	1
5	10P256AH	Spacing Collar	1
N/A	2P256AH	Cap Feed Slide 211 To 404 Diameter	1
6	3P256AH	Cap Feed Slide Plate	1
7	10P282AH	Trip Knee Spring	1
N/A	113P256AH	Cap Feed Brake Bracket	1
8	115P256AH	Cap Feed Break Shoe	1
9	116P256AH	Cap Feed Break Spring Screw	1
N/A	114P256AH	Cap Feed Brake Drum	1
N/A	3P454AH	Cap Feed Drive Guard	1
10	1P282AH	Drive Bushing NC NC (INCLUDES HARDWARE)	1
11	18P282AH	Trip Knee Bracket NC NC (INCLUDES HARDWARE)	1
12	4P282AH	Trip Knee NC NC (INCLUDES HARDWARE)	1
12.1	31P282AH	Pin	1
13	7P582AH	Ball Joint	1
N/A	17P682AH	Trip Knee Connecting Rod NC NC	1
N/A	11P282AH	Adjusting Yoke End	1
	13P282AH (NOT SHOWN)	Clevis Pin	1
N/A	12P282AH	Adjustable Rod End	1
14	11P266AH	Drive Pawl Pin	1
15	2P282AH	Drive Hub NC NC (A)	1
16	10P266AH	Drive Pawl Spring	1
17	8P266AH	Pawl NC NC	1
18	23P244AH	Lower Cap Feed Shaft (INCLUDES HARDWARE)	1
19	3P253AH	Collar (INCLUDES HARDWARE)	1
20	35P223AH	Cap Feed & Marker Driven Gear	1

**FOR MORE INFORMATION, CONTACT AMERICAN HOLT AT:**  
781-440-9993 • sales@americanholt.com • www.americanholt.com

# 40P Seamer

AFTER MARKET PARTS FOR:

## DRIVE CASE ELECTRICAL BREAK



**NOTICE:** All parts offered by American Holt are manufactured by or for American Holt and not by or for the Original Equipment Manufacturer. Part numbers shown that are those of the Original Equipment Manufacturer, if any, are used for reference purposes only. American Holt is an independent supplier of quality replacement parts having no affiliation with any Original Equipment Manufacturer. All prices are subject to change without notice. Copyright ©2019 American Holt Corp. All rights reserved.

IN-STOCK AND READY TO SHIP.

## DRIVE CASE ELECTRICAL BREAK

ITEM NO.	PART NO.	DESCRIPTION	QTY
1	1L617AH	Retaining Ring - Nickel Plated	1
2	12L653AH	Crank Handle	1
3	61P543AH	Motor Base Screw Support	1
4	198L653AH	Collar (INCLUDES HARDWARE)	2
5	236L616AH	Motor Base Screw Bearing	1
6	14L626AH	Motor Base Screw	1
7	15L626AH	Motor Base Screw Block	1
N/A	12L643AH	Motor Base Guide	2
N/A	361P443AH	Motor Base	1
N/A	12H654AH	Safety Nameplate	2
N/A	14P953AH	Handwheel	1
N/A	210P444AH	Handwheel Shaft	1
N/A	44P943AH	Handwheel Bracket	1
N/A	38P946AH	Stop Handwheel Latch	1
N/A	8P926AH	Handwheel Latch Screw	1
N/A	15P953AH	Handwheel Latch Block	1
N/A	16P953AH	Handwheel Latch Handle	1
	11L630AH (NOT SHOWN)	Clutch Handle Ball	1
8	10L615AH	Oil Seal 1-7/16" I.D. 2-1/4" O.D. X 1/2" W	1
9	4P253AH	Thrust Collar (INCLUDES HARDWARE)	1
N/A	10P947AH	Handwheel Shaft Key	1
10	9P917AH	Retaining Ring	1
11	35L617AH	Retaining Ring	2

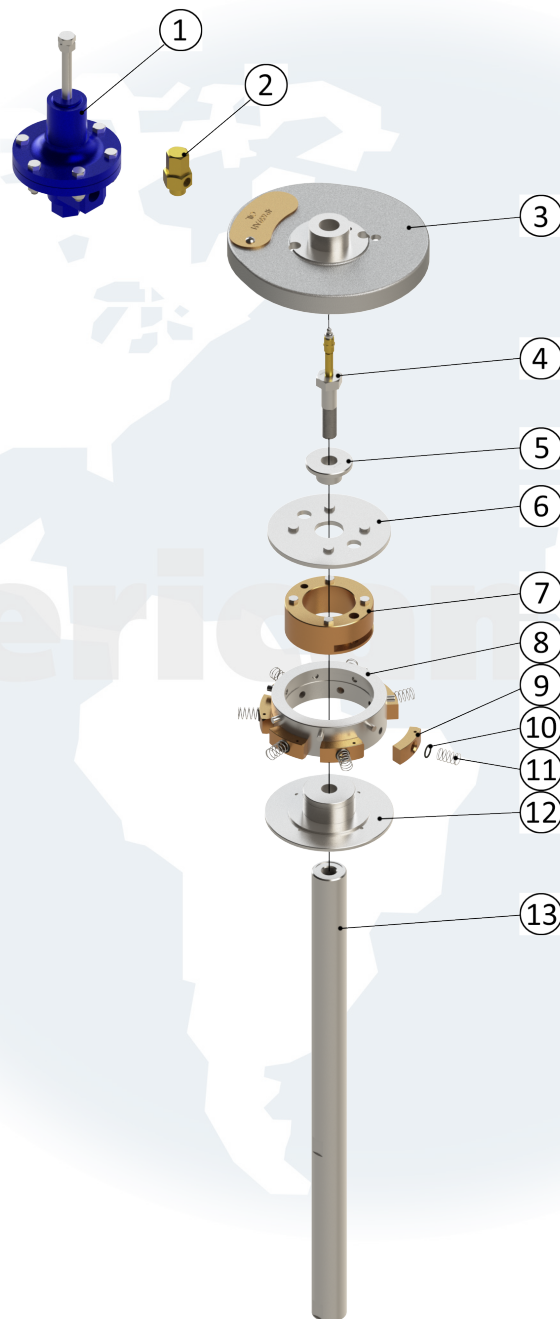
ITEM NO.	PART NO.	DESCRIPTION	QTY
N/A	257P444AH	Main Drive Shaft	1
12	72P416AH	Ball Bearing	1
13	2P215AH	Oil Seal	2
14	102P223AH	Main Drive Pinion Gear (INCLUDES HARDWARE)	1
15	13P216AH	Thrust Washer	1
16	64P216AH	Roller Bearing	1
17	103P223AH	Main Drive Gear (INCLUDES HARDWARE)	1
18	21P216AH	Ball Thrust Bearing	1
	9L626AH (NOT SHOWN)	Door Latch Bolt	10
	71L814AH (NOT SHOWN)	Sight Glass	1
N/A	5P454AH	Drive Case Cover	1
N/A	274P443AH	Drive Case	1
N/A	9P454AH	Door Guard	1
N/A	8P454AH	Seaming Chamber Door	1
N/A	16P454AH	Discharge Door	1
N/A	17P454AH	Fixed Guard Support	1
N/A	15L628AH	Door Hinge & Latch Pin	10
N/A	1P440AH	Door Latch Spring	10
N/A	7P454AH	Fixed Guard	1
N/A	1P453AH	Column Door Collar	3

**FOR MORE INFORMATION, CONTACT AMERICAN HOLT AT:**  
781-440-9993 • sales@americanholt.com • www.americanholt.com

# 40P Seamer

AFTER MARKET PARTS FOR:

## STEAM VACUUM



**NOTICE:** All parts offered by American Holt are manufactured by or for American Holt and not by or for the Original Equipment Manufacturer. Part numbers shown that are those of the Original Equipment Manufacturer, if any, are used for reference purposes only. American Holt is an independent supplier of quality replacement parts having no affiliation with any Original Equipment Manufacturer. All prices are subject to change without notice. Copyright ©2019 American Holt Corp. All rights reserved.

IN-STOCK AND READY TO SHIP.

## STEAM VACUUM

ITEM NO.	PART NO.	DESCRIPTION	QTY
N/A	7P439AH	Combination Separator & Trap	1
1	25P439AH	Pressure Reducing Valve (INCLUDES HARDWARE)	1
N/A	17P439AH	Piping Assembly	1
N/A	22P439AH	Pressure Gage 3-1/2D 0-100 PSI	1
N/A	9P439AH	Gauge Syphone	1
2	22P639AH	Adjustable Orifice (INCLUDES HARDWARE)	2
N/A	11P453AH	Regulating System Spacer	1
N/A	19P439AH	Pipe Nipple	2
N/A	2L614AH	Gravity Feed Oiler	1
N/A	62P443AH	Steam Vacuum Cap Guide Disc	1
N/A	63P443AH	Cap Guide Disc Wear Plate - Outer	1
N/A	64P443AH	Cap Guide Disc Wear Plate - Inner	1
N/A	21P439AH	Separator Bracket	1
3	55P620AH	Steam Vacuum Cap Pusher Cam (INCLUDES HARDWARE)	1
3.1	4P659AH	Oil Cover	1
4	5P626AH	Steam Vacuum Turret Shaft (INCLUDES HARDWARE)	1
5	2P653AH	Steam Vacuum Cap Screw Spacer	1
6	111P639AH	Steam Vacuum Manifold Ring Retainer (INCLUDES HARDWARE)	1
7	110P639AH	Steam Vacuum Manifold Ring (INCLUDES HARDWARE)	1
8	114P639AH	Steam Vacuum Valve Ring	1
8.1	4P628AH	Steam Vacuum Valve Ring Drive Pin	7
9	112P639AH	Steam Vacuum Feed Pocket Shoe	7
10	2P615AH	#112 O-Ring	7
11	11P640AH	Steam Vacuum Feed Pocket Spring	7
12	113P639AH	Steam Vacuum Manifold Ring Pilot	1
13	71P644AH	Steam Vacuum Feed Turret Shaft	1
	1L617AH (NOT SHOWN)	Retaining Ring - Nickel Plated	4
N/A	11P440AH	Knockout Rod Spring	4
N/A	65P216AH	Washer .640 X 1.188 X .063	4
N/A	164P244AH	Knockout Rod Assembly	4

**FOR MORE INFORMATION, CONTACT AMERICAN HOLT AT:**  
781-440-9993 • sales@americanholt.com • www.americanholt.com