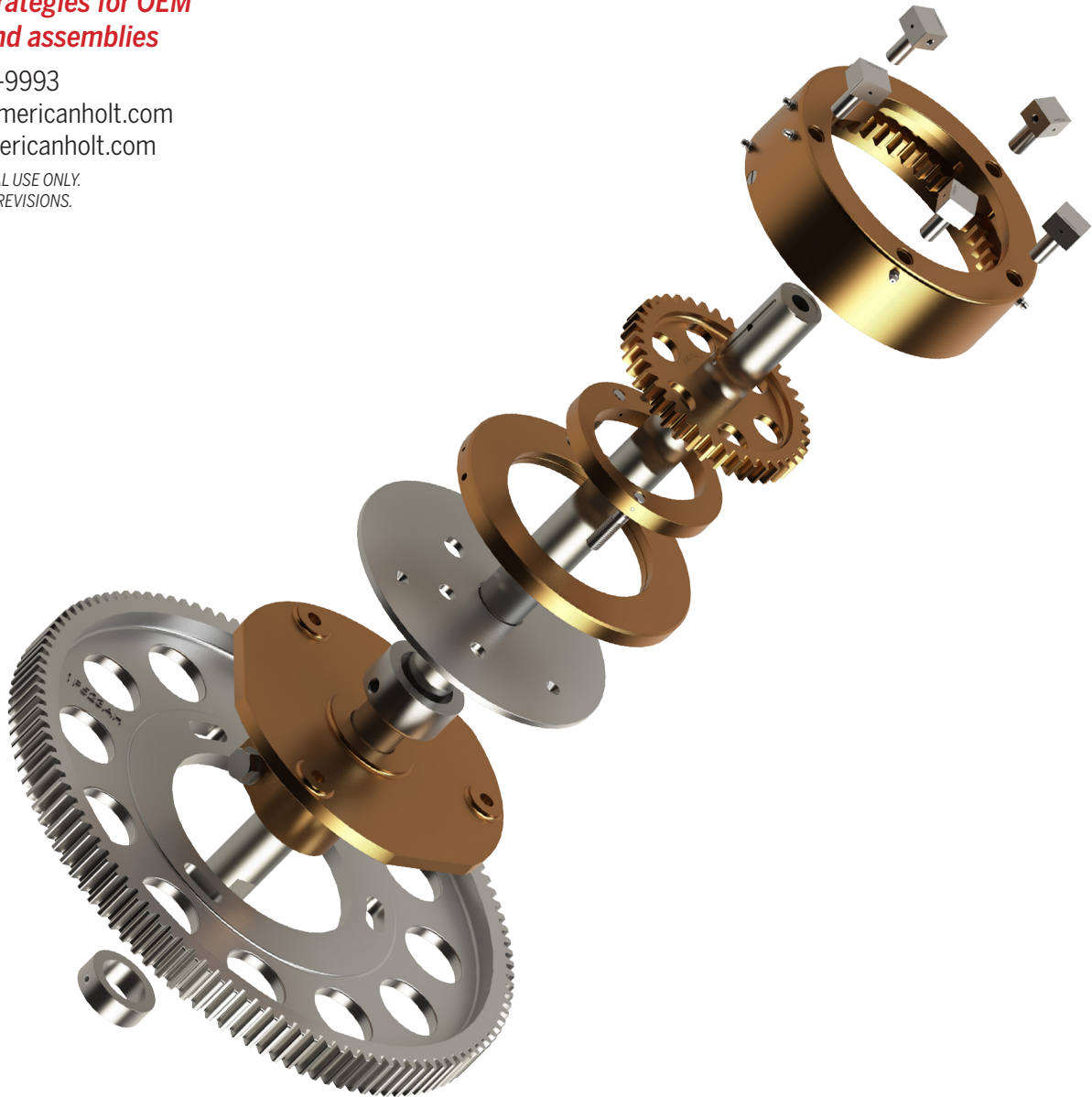


50P and 59P Seammers

***MRO strategies for OEM
parts and assemblies***

781-440-9993
sales@americanholt.com
www.americanholt.com

FOR INTERNAL USE ONLY.
SUBJECT TO REVISIONS.





American Holt is a full-service engineering firm focused on the reverse engineering of high-usage machinery components. Founded in 1995, American Holt manufactures aftermarket replacement parts for machines used by the beverage, food processing, packaging, and paper converting industries. We provide engineered savings to customers around the world.

CONTACT:

American Holt
203 Carnegie Row
Norwood, MA 02062
781-440-9993
sales@americanholt.com

HOURS:

Monday-Friday
8:00am to 5:00pm EST

SALES:

Tom St. Lawrence, President
Charlene Butts, Sales Manager

NOTICE:

All parts offered by American Holt are manufactured by or for American Holt and not by or for the Original Equipment Manufacturer. Part numbers shown that are those of the Original Equipment Manufacturer, if any, are used for reference purposes only. American Holt is an independent supplier of quality replacement parts having no affiliation with any Original Equipment Manufacturer. All prices are subject to change without notice.

Copyright ©2020 American Holt Corp. All rights reserved.

Table of Contents

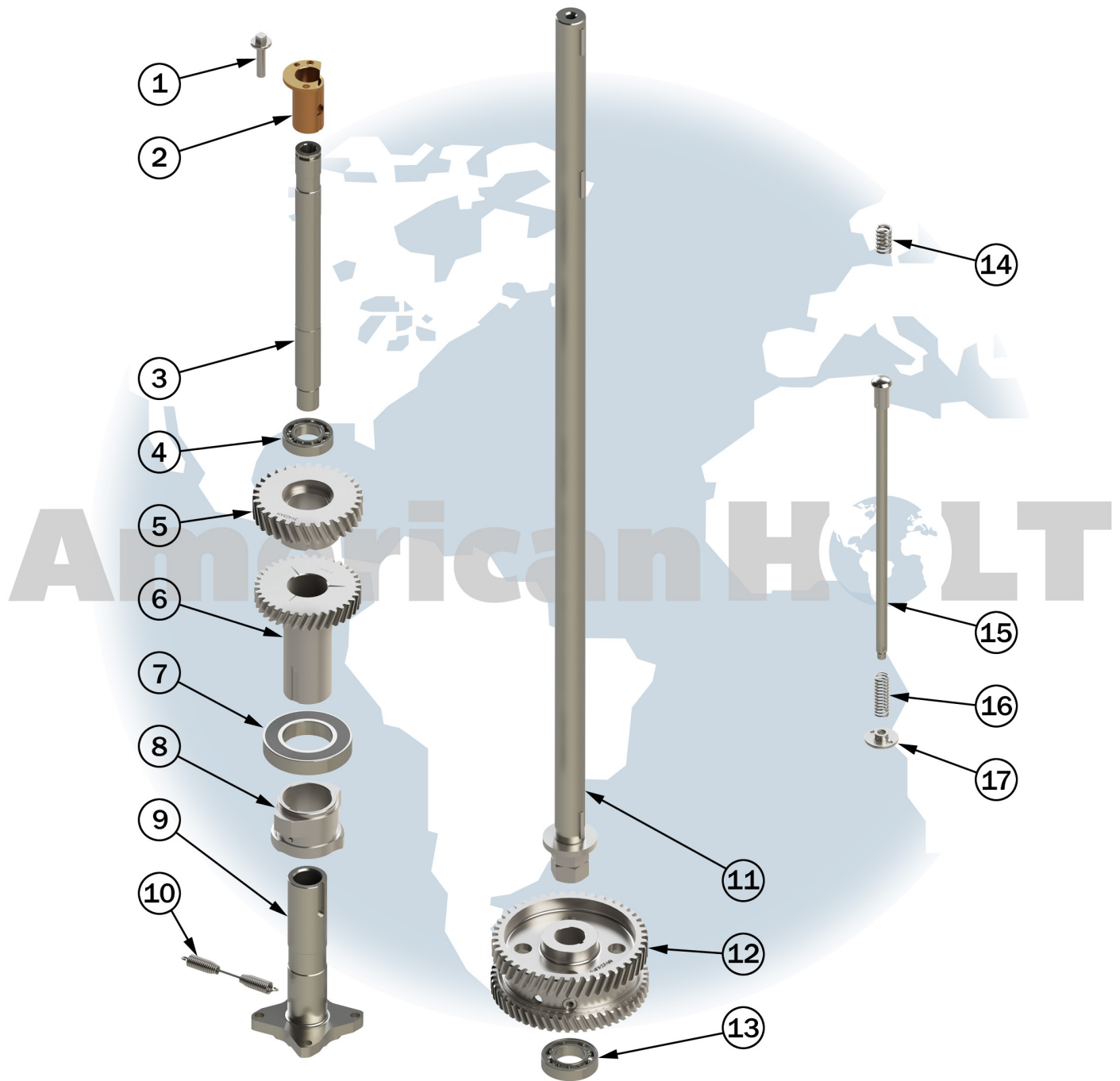
50P and 59P Seamers

50P and 59P 11.5 Rev Seaming Turret	2
50P and 59P 16 Rev Seaming Turret.....	4
50P and 59P Adjustable Motor Base	6
50P Cap Feed	8
59P Cap Feed.....	10
50P Feed Turret	12
59P Feed Turret	14
50P Lower Turret	16
59P Lower Turret	18

50P and 59P Seamers

AFTER MARKET PARTS FOR:

50P AND 59P 11.5 REV SEAMING TURRET



NOTICE: All parts offered by American Holt are manufactured by or for American Holt and not by or for the Original Equipment Manufacturer. Part numbers shown that are those of the Original Equipment Manufacturer, if any, are used for reference purposes only. American Holt is an independent supplier of quality replacement parts having no affiliation with any Original Equipment Manufacturer. All prices are subject to change without notice. Copyright ©2020 American Holt Corp. All rights reserved.

IN-STOCK AND READY TO SHIP.

* Item made-to-order

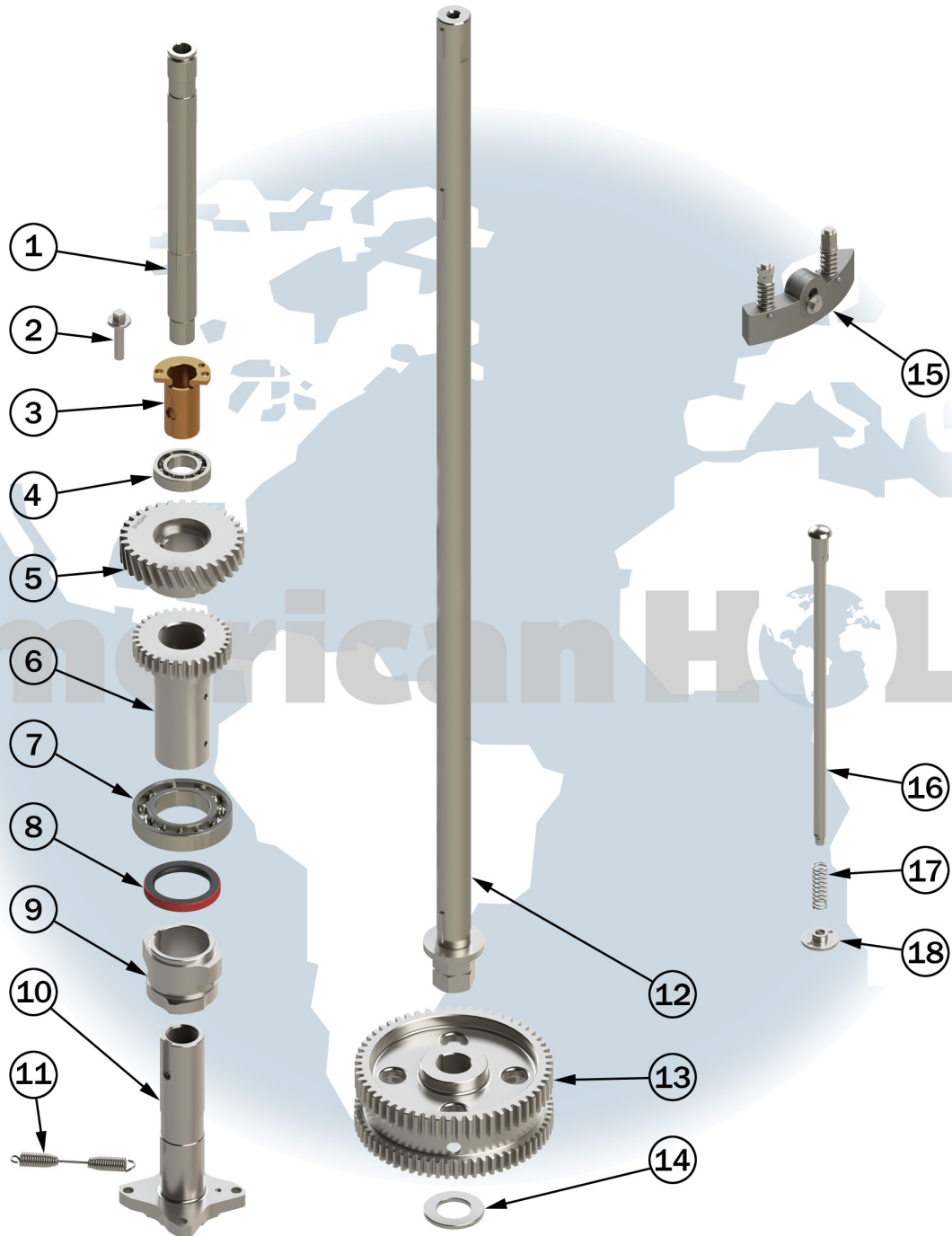
ITEM NO.	PART NO.	DESCRIPTION	QTY
1	20P228AH	D.S. Spindle Adjustment Screw	3
2	30P241AH	Upper Turret Adjustment Sleeve	3
3	4P244AH	Upper Chuck Spindle	1
4	17V241AH	Upper Spindle Ball Bearing	3
5	3V423AH	DS Head Drive Gear	3
5.1	3P247	Discharge Gear Key	3
6	112P223AH	D.S. Cam Drive Gear 7P 36T	3
7	26P216AH	Ball Bearing, Shielded 214-K	3
N/A	604P641AH	Lower Head Bearing	1
8	11P820AH	D.S. Head Cam Assembly	3
8.1	2P247AH	Key for DS Cam 1/4 x 1/2 x 1-7/8	1
8.2	22P241AH	Setscrew for DS Cam	1
9	1P241AH	DS Head Assembly (B) Sleeve	1
9.1	16P228AH	Dowel Pin, 0.373 x 0.375 x 0.750 GL	1
10	21P241AH	DS Head Springs	12
11	16P544AH	(A) Center Shaft	1
12	54P523AH	D.S. Center Gear 6P 46T & 7P 54T (INCLUDES HARDWARE)	1
13	28P216AH	Ball Bearing	1
14	15P220AH	Cap Centering Cam Spring	2
N/A	61P220AH	Cap Centering Cam Bracket	1
N/A	62P220AH	Cap Centering Cam	1
N/A	116P243AH	Knockout Cam	1
15	5P244AH	(B) Knockout Rod (Includes Knockout Rod End)	3
15.1	9P228AH	(A) Knockout Rod End	3
16	12P240AH	Knockout Rod Spring, Heavy Duty	3
17	49P244AH	Knockout Plate 211 to 404 Dia.	3

FOR MORE INFORMATION, CONTACT AMERICAN HOLT AT:
781-440-9993 • sales@americanholt.com • www.americanholt.com

50P and 59P Seamers

AFTER MARKET PARTS FOR:

50P AND 59P 16 REV SEAMING TURRET



NOTICE: All parts offered by American Holt are manufactured by or for American Holt and not by or for the Original Equipment Manufacturer. Part numbers shown that are those of the Original Equipment Manufacturer, if any, are used for reference purposes only. American Holt is an independent supplier of quality replacement parts having no affiliation with any Original Equipment Manufacturer. All prices are subject to change without notice. Copyright ©2020 American Holt Corp. All rights reserved.

IN-STOCK AND READY TO SHIP.

ITEM NO.	PART NO.	DESCRIPTION	QTY
1	4P244AH	Upper Chuck Spindle	1
2	20P228AH	D.S. Spindle Adjustment Screw	3
3	30P241AH	Upper Turret Adjustment Sleeve	3
4	17V241AH	Upper Spindle Ball Bearing	1
5	89P223AH	D.S. Head Drive Gear	1
5.1	3P247AH	Discharge Gear Key	3
6	90P223AH	D.S. Cam Drive Gear	1
7	18V241AH	Lower Head (A) Bearing #214	3
N/A	46P241AH	Lower Head Bearing	1
8	1P215AH	Oil Seal 2.6875 X 3.3750 X 0.5000W	3
9	17P220AH	D.S. Cam Assembly	1
9.1	22P241AH	Setscrew for DS Cam	3
9.2	2P247AH	Key for DS Cam 1/4 x 1/2 x 1-7/8	3
10	1P241AH	DS Head Assembly (B) Sleeve	1
10.1	16P228AH	Dowel Pin, 0.373 x 0.375 x 0.750 GL	4

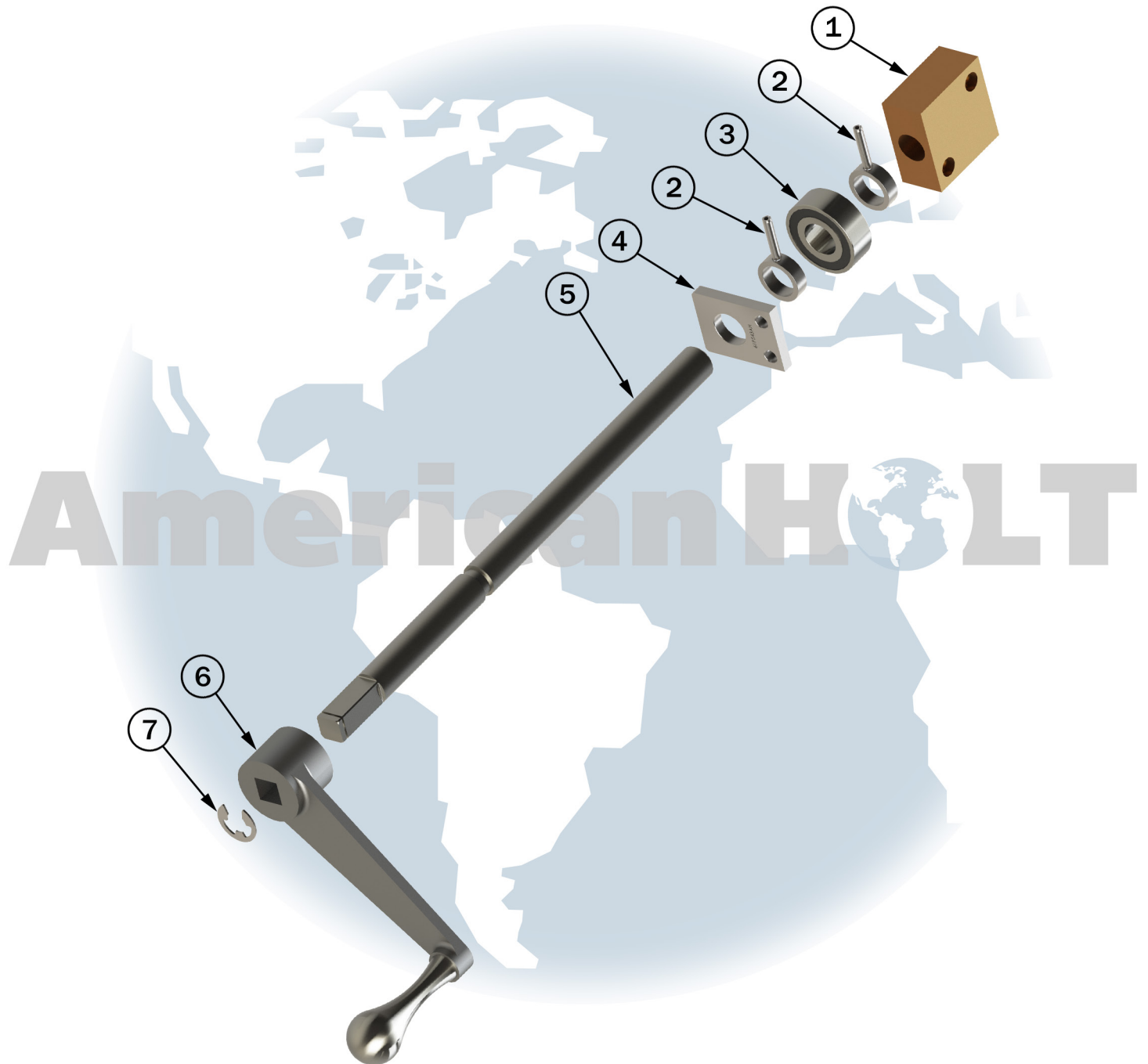
ITEM NO.	PART NO.	DESCRIPTION	QTY
11	21P241AH	DS Head Springs	12
12	16P544AH	(A) Center Shaft	1
13	35P523AH	D.S. Center Gear	1
14	13P216AH	Thrust Washer 1.6875	1
N/A	61P220AH	Cap Centering Cam Bracket	1
N/A	62P220AH	Cap Centering Cam	1
N/A	10P243AH	Knockout Cam	1
15	39P220AH	Cap Centering Cam (INCLUDES HARDWARE)	1
15	58P220AH	Cap Centering Cam (INCLUDES HARDWARE)	1
15.1	15P220AH	Cap Centering Cam Spring	2
15.2	19P228AH	Cap Centering Cam Stud	2
N/A	55P516AH	Spacer 0.396ID X 0.563OD X 1.375LG	1
16	5P244AH	(B) Knockout Rod (Includes Knockout Rod End)	3
16.1	9P228AH	(A) Knockout Rod End	3
17	1P240AH	Knockout Rod Spring - STL	3
18	49P244AH	Knockout Plate 211 to 404 Dia.	3

FOR MORE INFORMATION, CONTACT AMERICAN HOLT AT:
781-440-9993 • sales@americanholt.com • www.americanholt.com

50P and 59P Seamers

AFTER MARKET PARTS FOR:

50P AND 59P ADJUSTABLE MOTOR BASE



NOTICE: All parts offered by American Holt are manufactured by or for American Holt and not by or for the Original Equipment Manufacturer. Part numbers shown that are those of the Original Equipment Manufacturer, if any, are used for reference purposes only. American Holt is an independent supplier of quality replacement parts having no affiliation with any Original Equipment Manufacturer. All prices are subject to change without notice. Copyright ©2020 American Holt Corp. All rights reserved.

IN-STOCK AND READY TO SHIP.

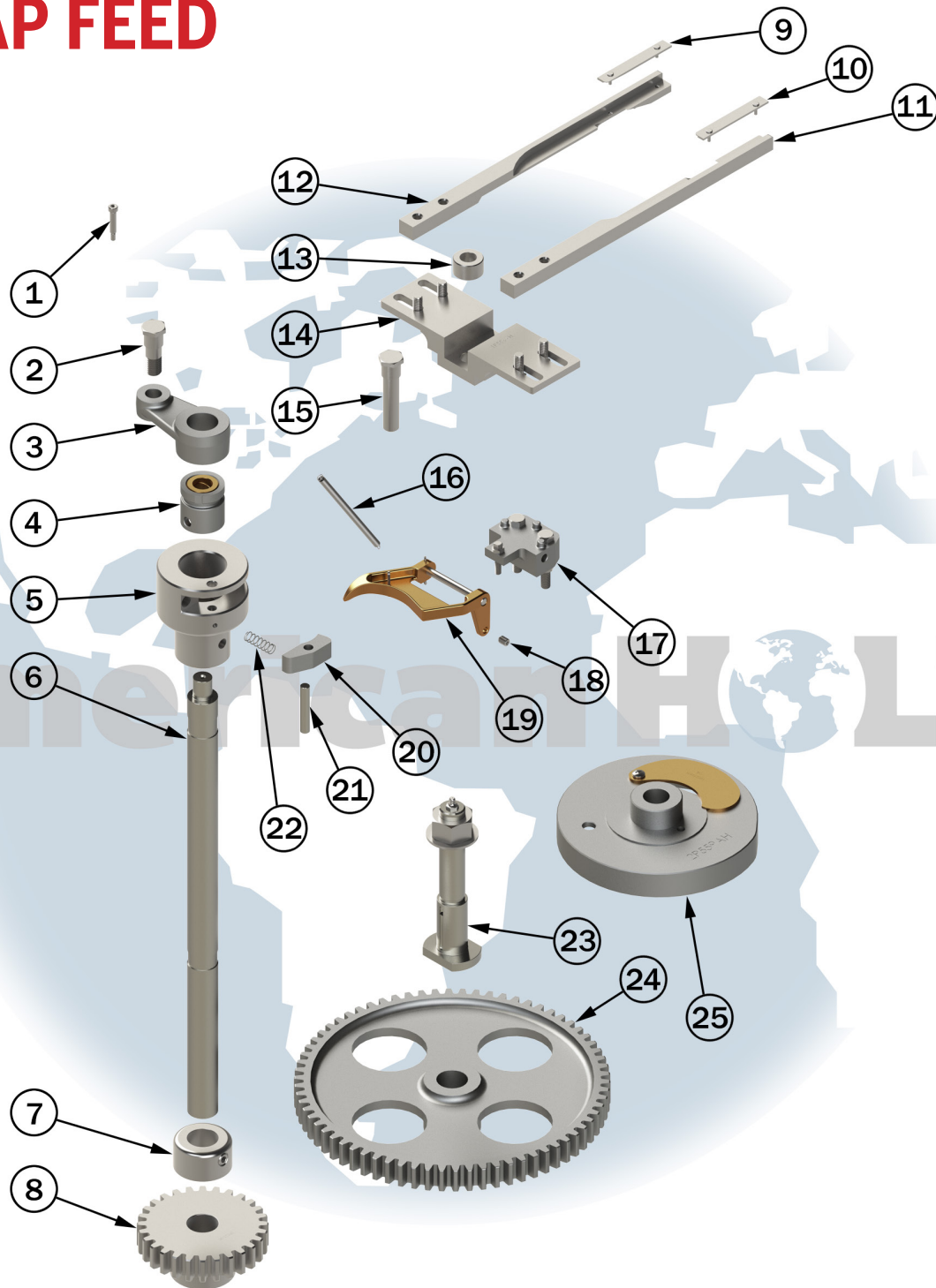
ITEM NO.	PART NO.	DESCRIPTION	QTY
N/A	12L643AH	Motor Base Guide	2
N/A	221P443AH	Motor Base	1
N/A	102P543AH	Motor Base Bracket	1
1	15L626AH	Motor Base Screw Block	1
2	198L653AH	Collar (SS)	2
3	236L616AH	Motor Base Screw Bearing	1
4	61P543AH	Motor Base Screw Support	1
5	14L626AH	Motor Base Screw	1
6	12L653AH	Crank Handle	1
7	1L617AH	Retaining Ring, Nickel Plated	1

FOR MORE INFORMATION, CONTACT AMERICAN HOLT AT:
781-440-9993 • sales@americanholt.com • www.americanholt.com

50P and 59P Seamers

AFTER MARKET PARTS FOR:

50P CAP FEED



NOTICE: All parts offered by American Holt are manufactured by or for American Holt and not by or for the Original Equipment Manufacturer. Part numbers shown that are those of the Original Equipment Manufacturer, if any, are used for reference purposes only. American Holt is an independent supplier of quality replacement parts having no affiliation with any Original Equipment Manufacturer. All prices are subject to change without notice. Copyright ©2020 American Holt Corp. All rights reserved.

IN-STOCK AND READY TO SHIP.

ITEM NO.	PART NO.	DESCRIPTION	QTY
1	9L626AH	Door Latch Screw (SS)	2
N/A	145P554AH	Cap Feed Drive Guard	1
N/A	15L628AH	Door Hinge & Latch Pin	2
N/A	1P440AH	Door Latch Spring	2
N/A	15P244AH	Head Guard Pin	1
N/A	9P556AH	Cap Feed Guard	1
2	13P256AH	Crank Bolt	1
N/A	2P556AH	Cap Feed Link	1
3	3P556AH	Cap Feed Crank (Heavy Duty) (INCLUDES HARDWARE)	1
N/A	6P266AH	Cap Feed Brake w/ Lining (B)	2
N/A	20P544AH	Cap Feed Shaft - Upper	1
4	1P282AH	NC NC Drive Bushing	1
5	2P282AH	(A) NC NC Drive Hub	1
6	19P544AH	Lower Cap Feed Shaft (A) (INCLUDES HARDWARE)	1
7	3P253AH	Collar 1.187	1
8	3P523AH	Cap Feed Drive Gear	1
9	15P556AH	Parting Knife Blade, LH (INCLUDES HARDWARE)	1
10	14P556AH	Parting Knife Blade, RH (INCLUDES HARDWARE)	1
N/A	6P556AH	Center Pusher	1
11	5P556AH	Parting Knife, RH	1
12	4P556AH	Parting Knife, LH	1
13	10P256AH	Spacing Collar	1
14	1P556AH	Cap Feed Slide	1
15	12P256AH	Slide Bolt	1
N/A	3P256AH	Cap Feed Slide Plate	1
16	10P282AH	Trip Knee Spring	1

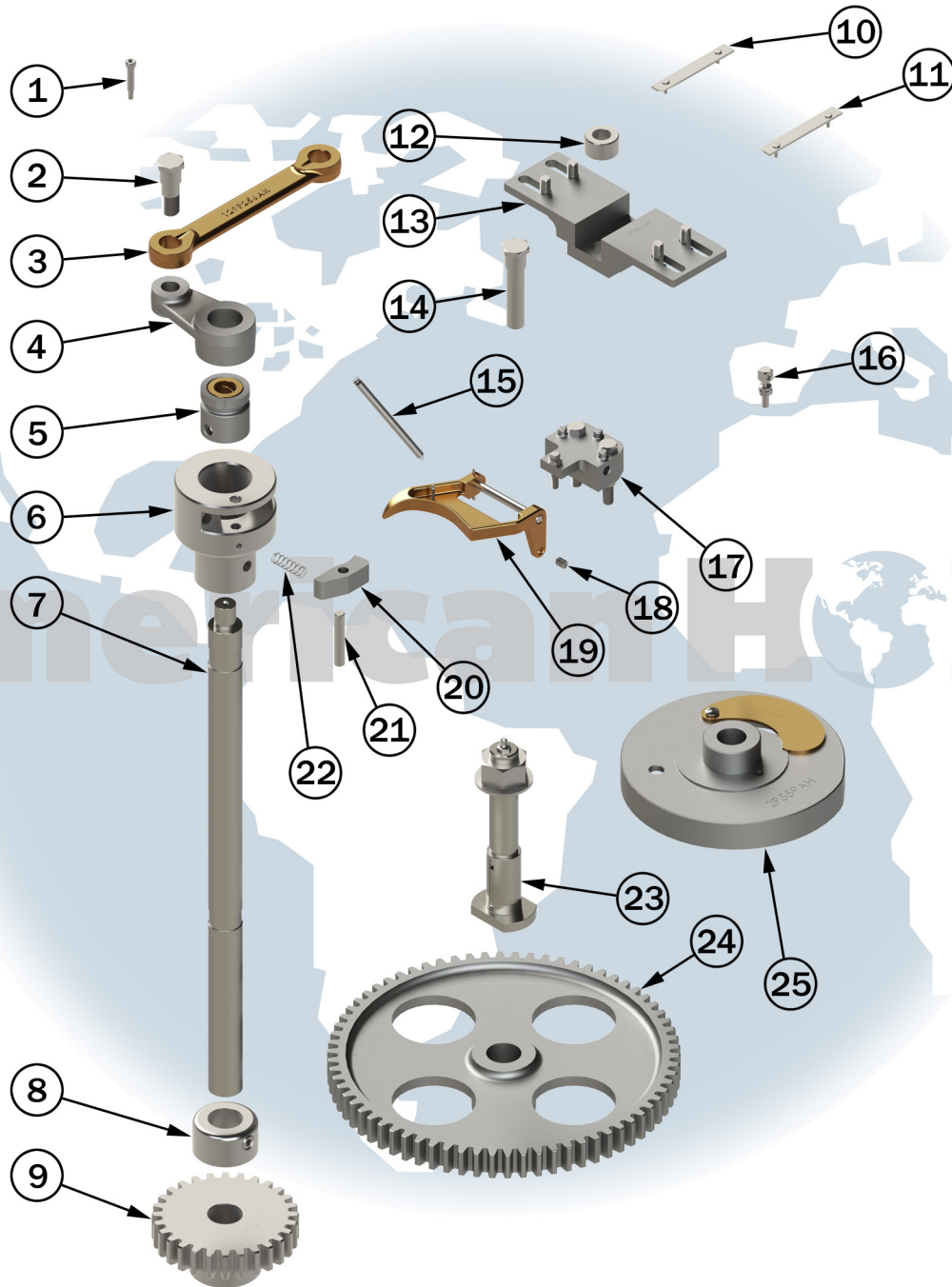
ITEM NO.	PART NO.	DESCRIPTION	QTY
17	18P282AH	Trip Knee Bracket (INCLUDES HARDWARE)	1
18	13P282AH	Clevis Pin	2
19	4P282AH	NC NC Trip Knee (B)	1
19.1	31P282AH	Pin	1
N/A	11P282AH	Adjusting Yoke End	2
N/A	2P582AH	(A) NC NC Connecting Rod	1
N/A	12P282AH	Adjustable Rod End	2
N/A	17P582AH	NC NC Feel Lever Shaft	1
N/A	5P682AH	NC NC Trip Lever	1
N/A	4P582AH	NC NC Shaft Bracket	1
N/A	9L653AH	Cap Feed Set Collar 0.5000 Shaft	1
N/A	19P682AH	NC NC Feel Lever	1
20	8P266AH	(A) NC NC Pawl	1
21	11P266AH	Drive Pawl Pin	1
22	10P266AH	Drive Pawl Spring	1
23	9P264AH	Gear Stud (INCLUDES HARDWARE)	1
24	5P523AH	Cap Feed Intermediate Gear	1
25	2P559AH	(A) Cap Pusher Cam	1
25.1	10P259AH	Cap Pusher Cam Cover	1
N/A	11P256AH	Cap Magazine Post	4
N/A	113P256AH	Cap Feed Brake Bracket	1
N/A	114P256AH	Cap Feed Brake Drum	1
N/A	115P256AH	Cap Feed Brake Shoe	1
N/A	116P256AH	Cap Feed Brake Spring Screw	1
N/A	11P240AH	Cap Feed Brake Spring	1
N/A	219P554AH	Cap Magazine Guard	1

FOR MORE INFORMATION, CONTACT AMERICAN HOLT AT:
781-440-9993 • sales@americanholt.com • www.americanholt.com

50P and 59P Seamers

AFTER MARKET PARTS FOR:

59P CAP FEED



NOTICE: All parts offered by American Holt are manufactured by or for American Holt and not by or for the Original Equipment Manufacturer. Part numbers shown that are those of the Original Equipment Manufacturer, if any, are used for reference purposes only. American Holt is an independent supplier of quality replacement parts having no affiliation with any Original Equipment Manufacturer. All prices are subject to change without notice. Copyright ©2020 American Holt Corp. All rights reserved.

IN-STOCK AND READY TO SHIP.

ITEM NO.	PART NO.	DESCRIPTION	QTY
1	9L626AH	Door Latch Screw	2
N/A	15L628AH	Door Hinge & Latch Pin (SS)	2
N/A	1P440AH	Door Latch Spring	2
N/A	15P244AH	Head Guard Pin	1
N/A	145P554AH	Cap Feed Drive Guard	1
N/A	57P556AH	Cap Feed Guard	1
N/A	77P556AH	Cap Feed Guard (Std Duty)	1
2	13P256AH	Bolt for Crank	1
3	129P256AH	Cap Feed Link (Std Duty)	1
N/A	59P556AH	Cap Feed Link	1
4	3P556AH	Cap Feed Crank (Heavy Duty) (INCLUDES HARDWARE)	1
N/A	76P556AH	Cap Feed Crank	1
N/A	6P266AH	Cap Feed Brake w/ Lining (B)	2
N/A	20P544AH	Cap Feed Shaft - Upper	1
5	1P282AH	NC NC Drive Bushing (IN- CLUDES HARDWARE)	1
6	2P282AH	(A) NC NC Drive Hub	1
7	19P544AH	Lower Cap Feed Shaft (A) (INCLUDES HARDWARE)	1
8	3P253AH	Collar (INCLUDES HARDWARE)	1
9	3P523AH	Cap Feed Drive Gear	1
10	89P556AH	Parting Knife - LH (Std Duty)	1
11	90P556AH	Parting Knife - RH (Std Duty)	1
N/A	60P556AH	Parting Knife - LH	1
N/A	61P556AH	Parting Knife - RH	1
N/A	99P556AH	Center Pusher	1
N/A	101P556AH	Cap Magazine Block	1
12	10P256AH	Spacing Collar	1
13	1P556AH	Cap Feed Slide (INCLUDES HARDWARE)	1
14	12P256AH	Bolt for Slide	1
N/A	3P256AH	Cap Feed Slide Plate	1

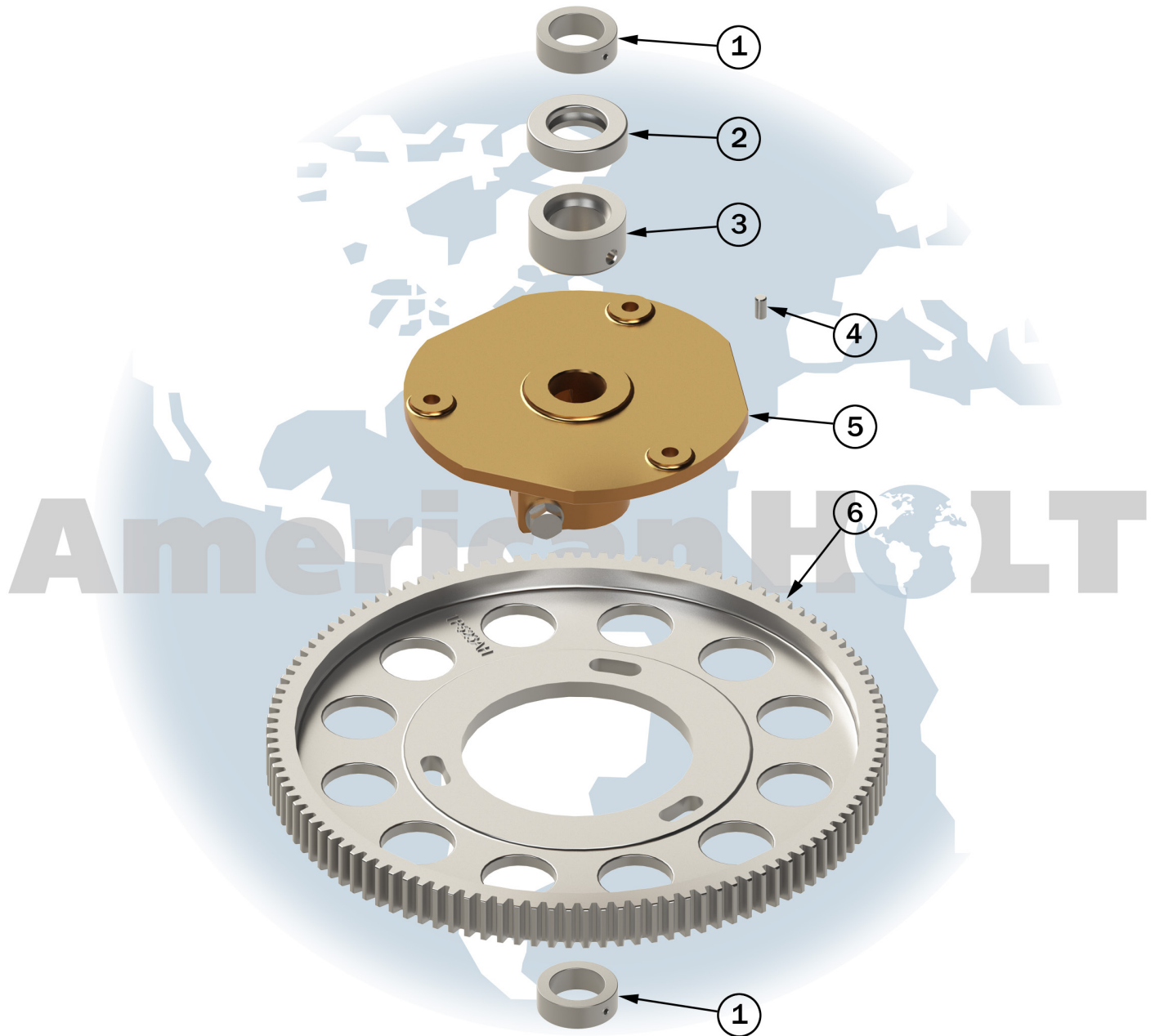
ITEM NO.	PART NO.	DESCRIPTION	QTY
N/A	15P516AH	Spacer for Cap Magazine	1
15	10P282AH	Spring for Trip Knee	1
16	7P582AH	Ball Joint, 90 Deg Rod Thru	1
N/A	9P640AH	Pressure Shoe Spring	4
N/A	8P659AH	Pressure Shoe Sleeve	1
N/A	1P628AH	Pressure Shoe Pin	4
N/A	5P559AH	Cap Guide Pressure Shoe #1	1
N/A	6P559AH	Cap Guide Pressure Shoe #2	1
17	18P282AH	NC NC Trip Knee Bracket (INCLUDES HARDWARE)	1
18	13P282AH	Clevis Pin	1
19	4P282AH	NC NC Trip Knee (B)	1
19.1	31P282AH	Pin	1
N/A	9P582AH	NC NC Trip Knee Connecting Rod	1
N/A	11P282AH	Adjusting Yoke End	1
N/A	12P282AH	Adjustable Rod End	1
N/A	1P653AH	NC NC Feel Lever Collar	1
N/A	5P582AH	NC NC Feel Lever	1
N/A	5P682AH	NC NC Trip Lever	2
N/A	9L653AH	Cap Feed Set Collar	1
N/A	11P582AH	NC NC Connecting Rod	1
N/A	11P682AH	NC NC Feel Lever Pin	1
N/A	18P582AH	NC NC Trip Lever Pin	1
20	8P266AH	(A) NC NC Pawl	1
21	11P266AH	Drive Pawl Pin	1
22	10P266AH	Drive Pawl Spring	1
23	9P264AH	Gear Stud (INCLUDES HARDWARE)	1
24	5P523AH	Cap Feed Intermediate Gear	1
25	9P520AH	Cap Pusher Cam	1
25.1	10P259AAH	Cap Pusher Cam Cover	1
N/A	11P256AH	Cap Magazine Post	1

FOR MORE INFORMATION, CONTACT AMERICAN HOLT AT:
781-440-9993 • sales@americanholt.com • www.americanholt.com

50P and 59P Seamers

AFTER MARKET PARTS FOR:

50P FEED TURRET



NOTICE: All parts offered by American Holt are manufactured by or for American Holt and not by or for the Original Equipment Manufacturer. Part numbers shown that are those of the Original Equipment Manufacturer, if any, are used for reference purposes only. American Holt is an independent supplier of quality replacement parts having no affiliation with any Original Equipment Manufacturer. All prices are subject to change without notice. Copyright ©2020 American Holt Corp. All rights reserved.

IN-STOCK AND READY TO SHIP.

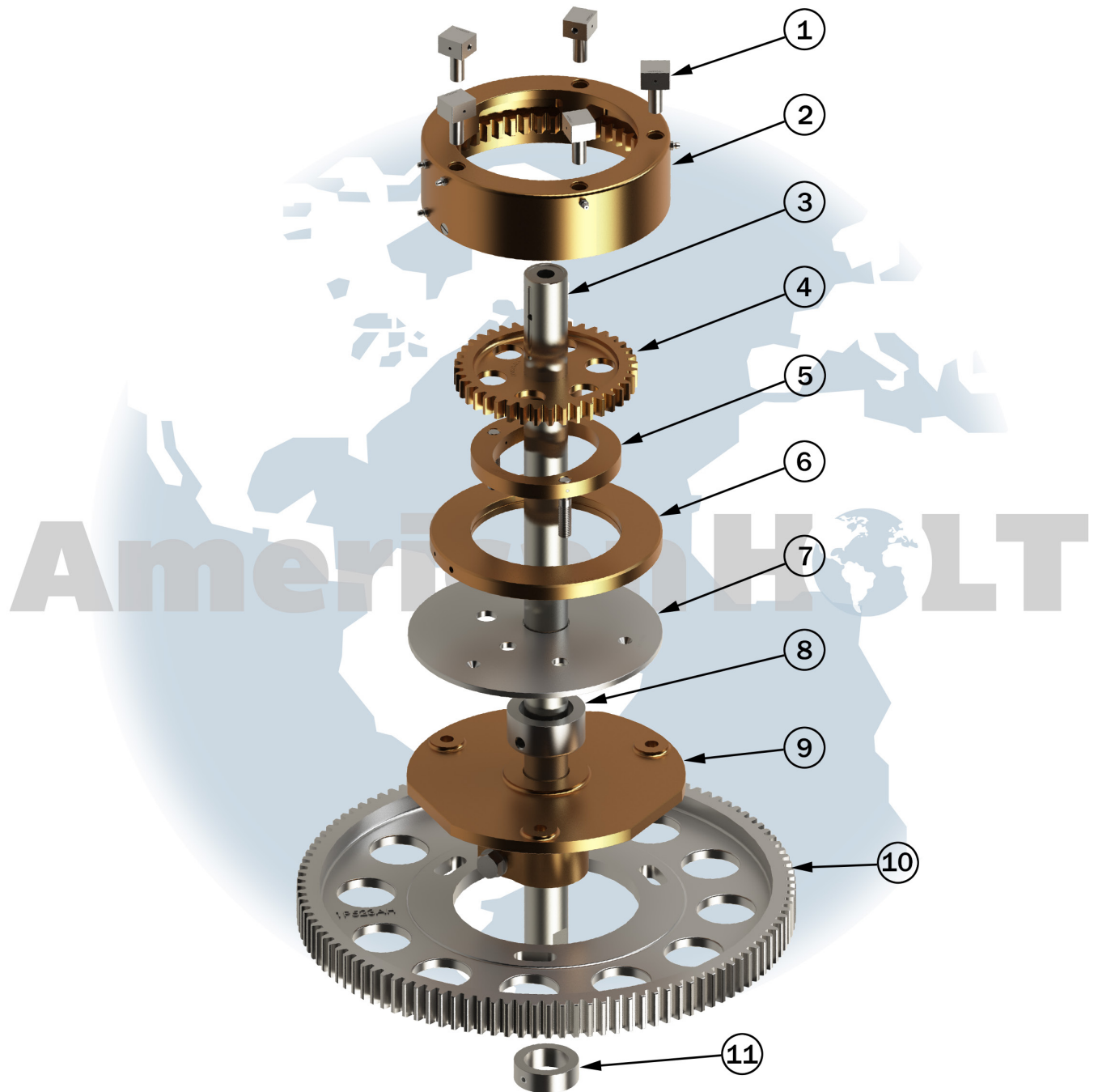
ITEM NO.	PART NO.	DESCRIPTION	QTY
1	6P253AH	Collar 1.688 (INCLUDES HARDWARE)	2
N/A	16P563AH	Feed Pocket Hub	1
N/A	32P228AH	Clamping Pin	2
2	21P216AH	Ball Thrust Bearing	1
N/A	37P544AH	Feed Turret Shaft	1
3	1P253AH	Set Collar 1.6875	1
4	16P228AH	Dowel Pin 0.373 X 0.375 X 0.750 GL	8
5	13P223AH	Feed Turret Gear Hub (B) (INCLUDES HARDWARE)	1
6	1P523AH	Feed Turret Gear 6P 112T	1

FOR MORE INFORMATION, CONTACT AMERICAN HOLT AT:
781-440-9993 • sales@americanholt.com • www.americanholt.com

50P and 59P Seamers

AFTER MARKET PARTS FOR:

59P FEED TURRET



NOTICE: All parts offered by American Holt are manufactured by or for American Holt and not by or for the Original Equipment Manufacturer. Part numbers shown that are those of the Original Equipment Manufacturer, if any, are used for reference purposes only. American Holt is an independent supplier of quality replacement parts having no affiliation with any Original Equipment Manufacturer. All prices are subject to change without notice. Copyright ©2020 American Holt Corp. All rights reserved.

IN-STOCK AND READY TO SHIP.

* Item made-to-order

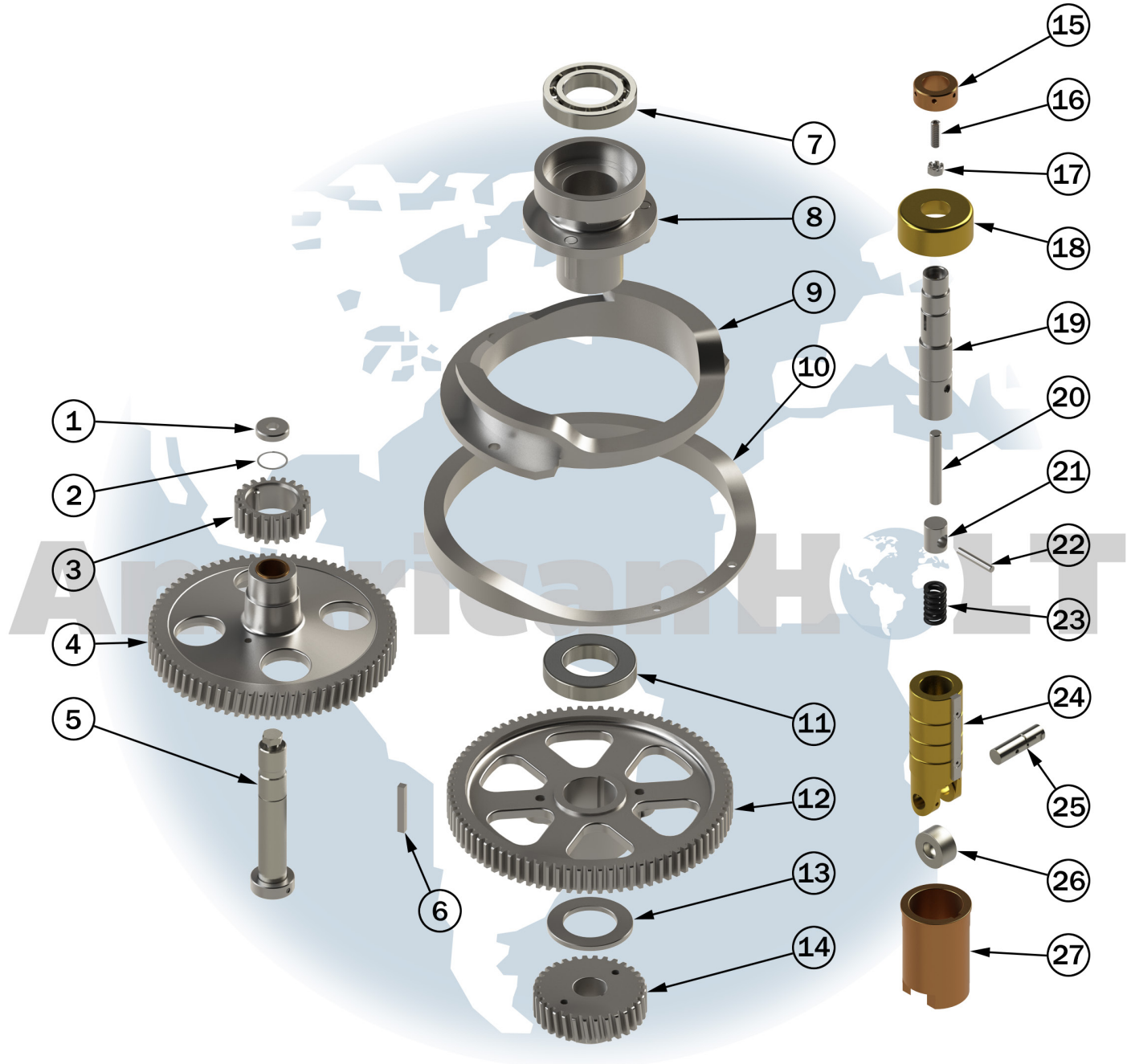
ITEM NO.	PART NO.	DESCRIPTION	QTY
N/A	23P226AH	Cap Screw	1
N/A	15P563AH	Feed Arm Washer	1
N/A	10/14P563AH	Feed Arm	5
N/A	16P228AH	Dowel Pin, 0.373 X 0.375 X 0.750 GL	10
1	17P263AH	Feed Arm Slide	5
2	16P523AH	"Internal Feed Gear	1
3	78P544AH	(INCLUDES HARDWARE)"	1
4	17P523AH	Feed Turret Shaft	1
5	7P562AH	"Feed Arm Drive Gear	1
6	6P562AH	(INCLUDES HARDWARE)"	1
7	42P543AH	"Feed Arm Eccentric	1
8	1P253AH	(INCLUDES HARDWARE)"	1
9	13P223AH	Internal Feed Gear Liner	1
10	1P523AH	Feed Frame Plate	1
11	6P253AH	Collar (INCLUDES HARDWARE)	1

FOR MORE INFORMATION, CONTACT AMERICAN HOLT AT:
781-440-9993 • sales@americanholt.com • www.americanholt.com

50P and 59P Seamers

AFTER MARKET PARTS FOR:

50P LOWER TURRET



NOTICE: All parts offered by American Holt are manufactured by or for American Holt and not by or for the Original Equipment Manufacturer. Part numbers shown that are those of the Original Equipment Manufacturer, if any, are used for reference purposes only. American Holt is an independent supplier of quality replacement parts having no affiliation with any Original Equipment Manufacturer. All prices are subject to change without notice. Copyright ©2020 American Holt Corp. All rights reserved.

IN-STOCK AND READY TO SHIP.

* Item made-to-order

ITEM NO.	PART NO.	DESCRIPTION	QTY
1	73P290AH	Gear Stud Washer	1
2	24P417AH	Retaining Ring	1
3	13P423AH	Main Intermediate Pinion 21T 6P	1
N/A	31P416AH	Thrust Washer	2
4	12P423AH	Intermediate Gear 6P 72T	1
5	3P464AH	Intermediate Gear Stud	1
5.1	4P253AH	Plain Collar 1.438 X 2.2500 X 0.750	1
6	38P216AH	Key for Turret Gear	1
N/A	5P541AH	Upper Turret	1
N/A	6P541AH	Upper Turret	1
N/A	1P508AH	Starwheel Hub	1
N/A	16P228AH	Dowel Pin, 0.373 X 0.375 X 0.750 GL	5
N/A	15P544AH	(A) Turret Hollow Shaft	1
N/A	92P544AH	Turret Hollow Shaft	1
N/A	2P541AH	Lower Turret	1
N/A	16P228AH	Dowel Pin, 0.373 X 0.375 X 0.750 GL	3
7	17P216AH	Ball Thrust Bearing	1
8	13P202AH	Lower Bearing Retainer for Turret (INCLUDES HARDWARE)	1
9	53P220AH	Lower Chuck Guide Cam	1
N/A	66P220AH	Lower Chuck Guide Cam	1
N/A	60P220AH	Lower Chuck Guide Cam	1
10	68P220AH	Lower Chuck Cam	1
10.1	71P220AH	Lower Chuck Cam Plate	1

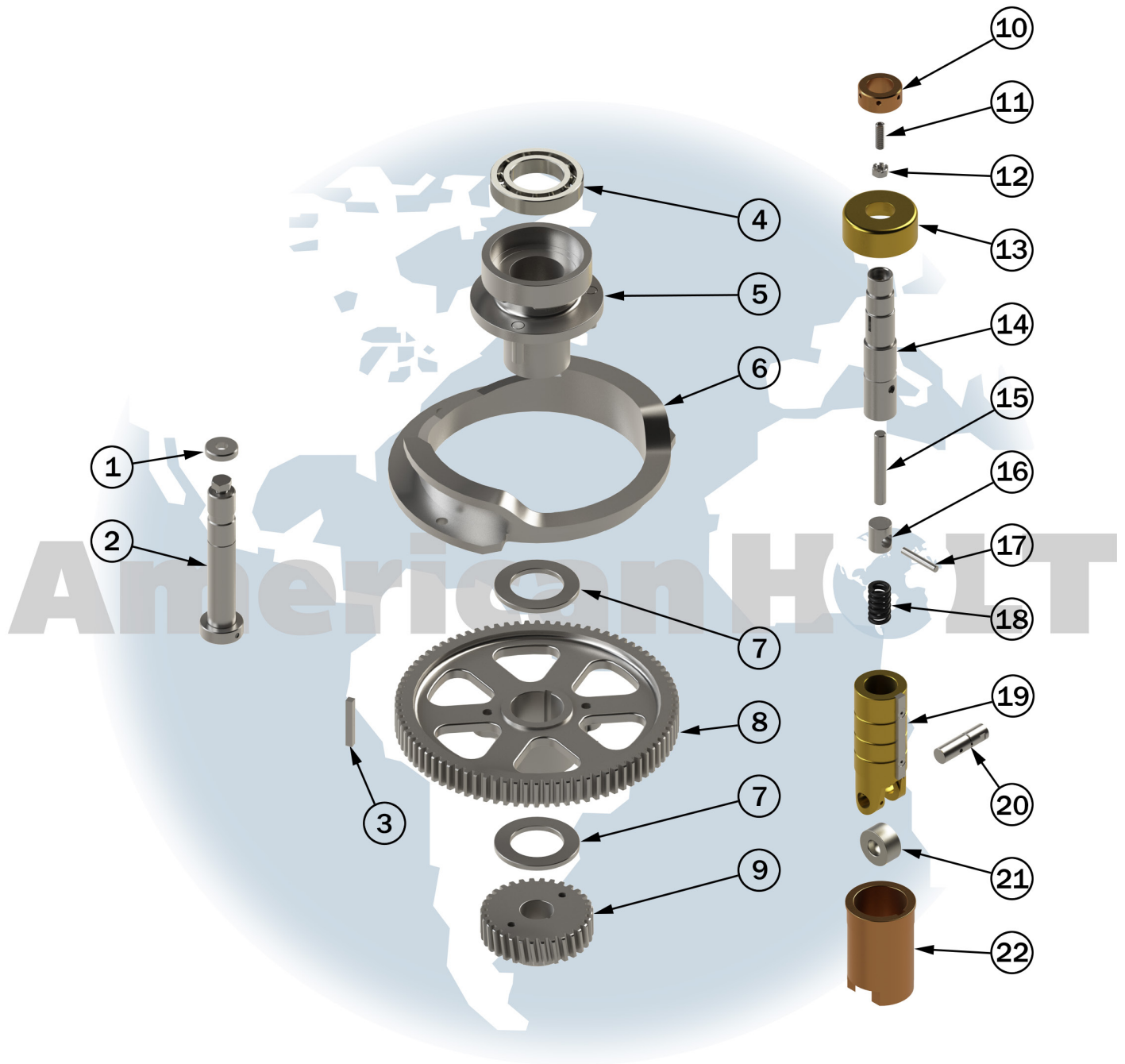
ITEM NO.	PART NO.	DESCRIPTION	QTY
10	69P220AH	Lower Chuck Cam	1
10.2	71P220AH	Lower Chuck Cam Plate	1
N/A	67P220AH	Lower Chuck Cam	1
N/A	70P220AH	Lower Chuck Cam Plate	1
N/A	32P220AH	Lower Chuck Cam Plate	1
11	50P516AH	Ball Bearing	1
12	58P523AH	Main Turret Gear 6P 84T (INCLUDES HARDWARE)	1
13	14P216AH	Thrust Washer 2.7030	1
14	45P223AH	Center Lower Drive (B) Gear 32T 6P	1
15	1P957AH	Lower Chuck Adjusting Nut	3
16	1P254AH	Hex Socket Set Screw (SS)	3
17	7P228AH	Check Nut for Adjustment Screw	3
18	4P557AH	Lower Chuck Mandrel Cap	3
19	1P527AH	Lower Chuck Mandrel (SS)	3
20	2P528AH	Spring Adjusting Pin	3
21	3P528AH	Lower Chuck Spacer	3
22	23P228AH	Lower Chuck Lock Pin	3
23	1P540AH	Lower Chuck Spring	3
24	6P206AH	Lower Chuck Slide (INCLUDES HARDWARE)	3
24.1	1P210AH	Lower Chuck Slide Key (SS)	3
25	8P229AH	Cam Roll Pin w/ Fittings Hole	3
26	3P229AH	Lower Chuck Cam Roll	3
27	8P206AH	Lower Turret Bushing (B)	3

FOR MORE INFORMATION, CONTACT AMERICAN HOLT AT:
781-440-9993 • sales@americanholt.com • www.americanholt.com

50P and 59P Seamers

AFTER MARKET PARTS FOR:

59P LOWER TURRET



NOTICE: All parts offered by American Holt are manufactured by or for American Holt and not by or for the Original Equipment Manufacturer. Part numbers shown that are those of the Original Equipment Manufacturer, if any, are used for reference purposes only. American Holt is an independent supplier of quality replacement parts having no affiliation with any Original Equipment Manufacturer. All prices are subject to change without notice. Copyright ©2020 American Holt Corp. All rights reserved.

IN-STOCK AND READY TO SHIP.

* Item made-to-order

ITEM NO.	PART NO.	DESCRIPTION	QTY
1	73P290AH	Gear Stud Washer	1
N/A	75P223AH	Intermediate Gear Pinion	1
N/A	48P223AH	Intermediate Gear 6P 72T	1
2	16P264AH	Intermediate Gear Stud w/ Collar (INCLUDES HARDWARE)	1
3	38P216AH	Key for Turret Gear	1
N/A	6P541AH	Upper Turret	1
N/A	5P541AH	Upper Turret	1
N/A	1P508AH	Starwheel Hub	1
N/A	16P228AH	Dowel Pin, 0.373 X 0.375 X 0.750 GL	5
N/A	15P544AH	(A) Turret Hollow Shaft	1
N/A	92P544AH	Turret Hollow Shaft	1
N/A	2P541AH	Lower Turret	1
N/A	16P228AH	Dowel Pin, 0.373 X 0.375 X 0.750 GL	3
4	17P216AH	Ball Thrust Bearing	1
5	13P202AH	Lower Bearing Retainer for Turret (INCLUDES HARDWARE)	1
6	53P220AH	Lower Chuck Guide Cam	1
N/A	60P220AH	Lower Chuck Guide Cam	1
N/A	66P220AH	Lower Chuck Guide Cam	1
N/A	59P220AH	Lower Chuck Cam	1

ITEM NO.	PART NO.	DESCRIPTION	QTY
N/A	64P220AH	Lower Turret Cam	1
N/A	65P220AH	Lower Turret Cam	1
N/A	32P220AH	Lower Chuck Cam Plate	1
7	14P216AH	Thrust Washer	2
8	107P223AH	Main Turret Gear (INCLUDES HARDWARE)	1
9	45P223AH	Center Lower Drive (B) Gear	1
10	1P957AH	Lower Chuck Adjusting Nut	3
11	1P254AH	Hex Socket Set Screw	3
12	7P228AH	Check Nut for Adjustment Screw	3
13	4P557AH	Mandrel Cap	3
14	1P527AH	Lower Chuck Mandrel (SS)	3
15	2P528AH	Spring Adjusting Pin	3
16	3P528AH	Lower Chuck Spacer	3
17	23P228AH	Lower Chuck Lock Pin	3
18	1P540AH	Lower Chuck Spring	3
19	6P206AH	Lower Chuck Slide (INCLUDES HARDWARE)	3
19.1	1P210AH	Lower Chuck Slide Key (SS)	3
20	8P229AH	Cam Roll Pin w/ Fittings Hole	3
21	3P229AH	Lower Chuck Cam Roll	3
22	8P206AH	Lower Turret Bushing (B)	3

FOR MORE INFORMATION, CONTACT AMERICAN HOLT AT:
781-440-9993 • sales@americanholt.com • www.americanholt.com