

# 53P and 58P Seamers

***MRO strategies for OEM  
parts and assemblies***

781-440-9993  
sales@americanholt.com  
www.americanholt.com

*FOR INTERNAL USE ONLY.  
SUBJECT TO REVISIONS.*





**American Holt is a full-service engineering firm focused on the reverse engineering of high-usage machinery components. Founded in 1995, American Holt manufactures aftermarket replacement parts for machines used by the beverage, food processing, packaging, and paper converting industries. We provide engineered savings to customers around the world.**

**CONTACT:**

American Holt  
203 Carnegie Row  
Norwood, MA 02062  
781-440-9993  
sales@americanholt.com

**HOURS:**

Monday-Friday  
8:00am to 5:00pm EST

**SALES:**

Tom St. Lawrence, President  
Charlene Butts, Sales Manager

**NOTICE:**

*All parts offered by American Holt are manufactured by or for American Holt and not by or for the Original Equipment Manufacturer. Part numbers shown that are those of the Original Equipment Manufacturer, if any, are used for reference purposes only. American Holt is an independent supplier of quality replacement parts having no affiliation with any Original Equipment Manufacturer. All prices are subject to change without notice.*

*Copyright ©2020 American Holt Corp. All rights reserved.*

# Table of Contents

---

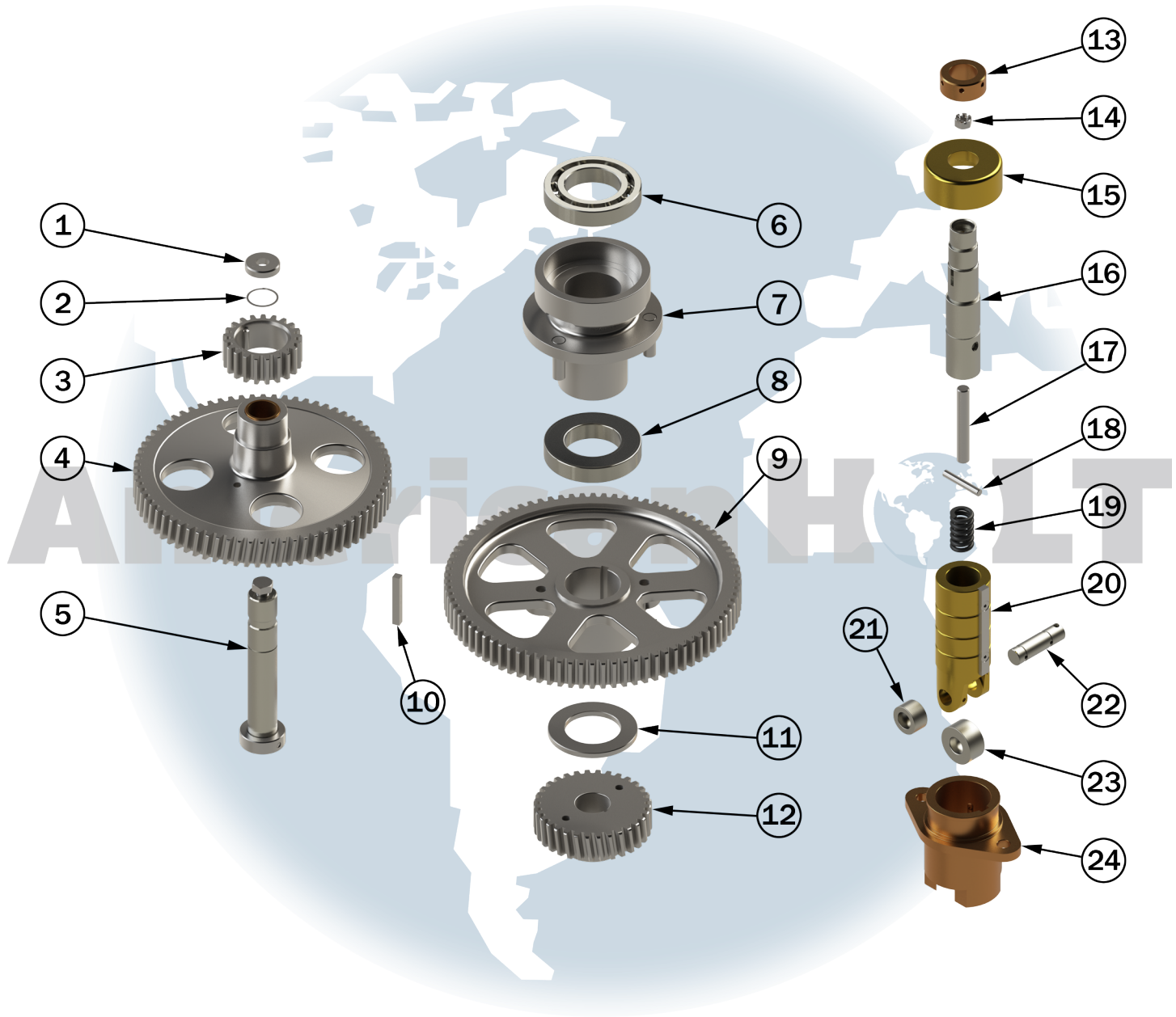
## 53P and 58P Seamers

53P and 58P Lower Turret .....	2
53P and 58P Seaming Turret.....	4
53P and 58P Cap Feed.....	6
53P Feed Turret .....	8
58P Feed Turret .....	10
53P Change Parts .....	12
58P Change Parts .....	14
53P Can Feed.....	16

# 53P and 58P Seamers

AFTER MARKET PARTS FOR:

## 53P AND 58P LOWER TURRET



**NOTICE:** All parts offered by American Holt are manufactured by or for American Holt and not by or for the Original Equipment Manufacturer. Part numbers shown that are those of the Original Equipment Manufacturer, if any, are used for reference purposes only. American Holt is an independent supplier of quality replacement parts having no affiliation with any Original Equipment Manufacturer. All prices are subject to change without notice. Copyright ©2020 American Holt Corp. All rights reserved.



IN-STOCK AND READY TO SHIP.

\* Item made-to-order

ITEM NO.	PART NO.	DESCRIPTION	QTY
1	73P290AH	Timing Star Washer	1
2	24P417AH	Spiral Retaining Ring	1
N/A	31P416AH	Thrust Washer	1
3	13P423AH	Main Intermediate Pinion Gear	1
4	12P423AH	Intermediate Gear	1
5	3P464AH	Intermediate Gear Stud	1
5.1	4P253AH	Thrust Collar	1
N/A	1P508AH	Starwheel Hub	1
N/A	16P228AH	Dowel Pin 0.373 X 0.375 X 0.750 GL	8
N/A	92P544AH	Turret Hollow Shaft	1
N/A	29P541AH	Lower Turret	1
6	17P216AH	Single Row Deep Groove Bearing	1
7	13P202AH	Lower Bearing Retainer (INCLUDES HARDWARE)	1
N/A	30P520AH	Lower Chuck Guide Cam	1
N/A	67P220AH	Lower Chuck Cam w/ Plate	1
N/A	70P220AH	Lower Chuck Cam Plate	1
N/A	16P228AH	Dowel Pin 0.373 X 0.375 X 0.750 GL	5
8	50P516AH	Ball Bearing	1
9	58P523AH	Main Turret Gear 6P 84T (INCLUDES HARDWARE)	1

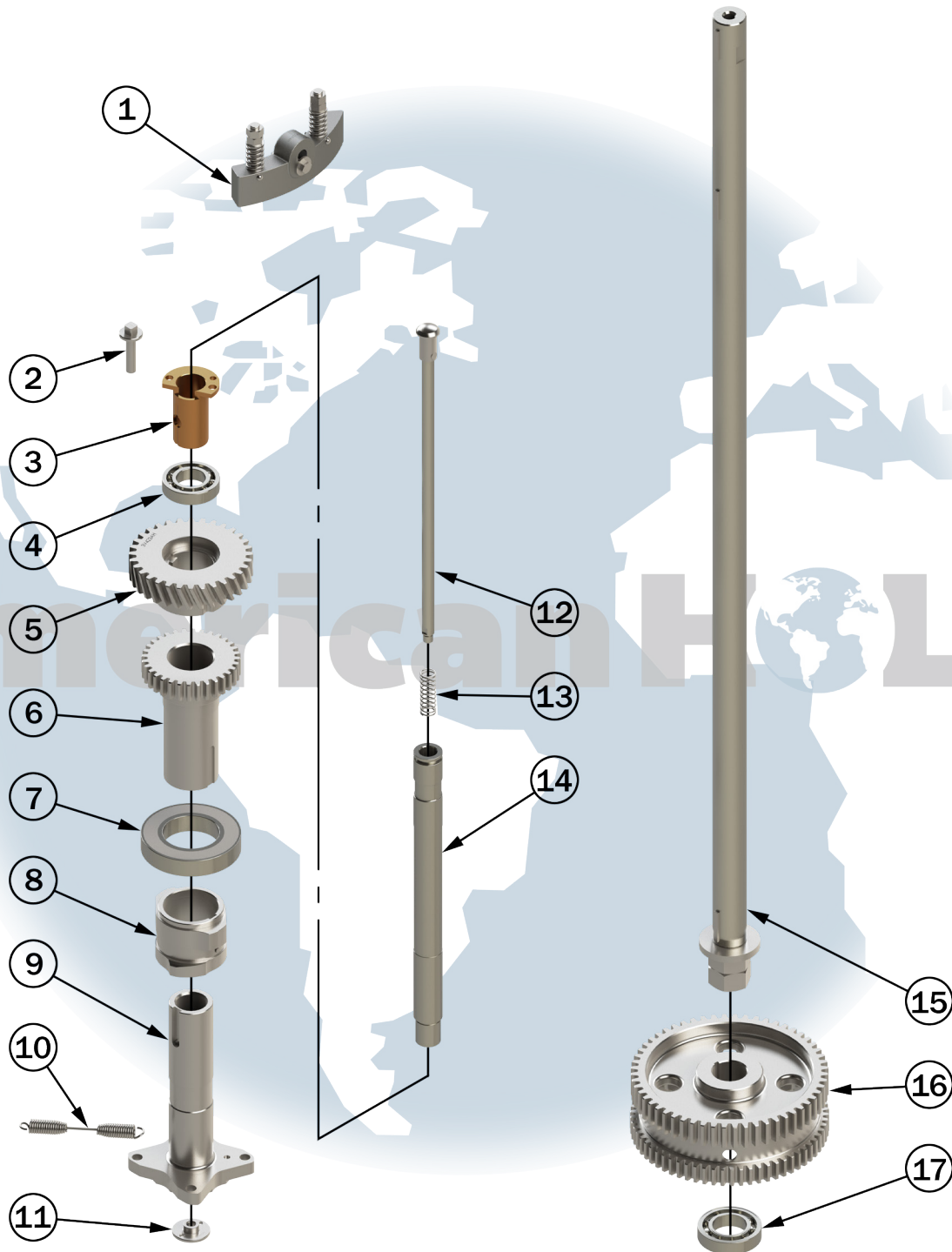
ITEM NO.	PART NO.	DESCRIPTION	QTY
10	38P216AH	Turret Gear Key	1
11	14P216AH	Thrust Washer	1
12	45P223BAH	Center Lower Drive Gear	1
13	1P957AH	Lower Chuck Adjusting Nut	3
N/A	8P526AH	Hex Socket Set Screw	3
14	7P228AH	Slotted nut	3
15	4P557AH	Lower Chuck Mandrel Cap	3
16	1P527AH	Lower Chuck Mandrel Assembly	3
17	2P528AH	Adjusting Spring Pin	3
N/A	9P528AH	Lower Chuck Spacer	3
18	23P228AH	Lower Chuck Locking Pin	3
19	1P540AH	Lower Chuck Spring 1000lbs	3
20	5P527AH	Lower Chuck Slide (INCLUDES HARDWARE)	3
20.1	1P210AH	Lower Chuck Slide Key	3
21	601P629AH	Cam Roll	3
22	3P529AH	Cam Roll Pin	3
23	3P229AH	Lower Chuck Cam Roll	3
24	602P641AH	Lower Turret Bushing	3

**FOR MORE INFORMATION, CONTACT AMERICAN HOLT AT:**  
781-440-9993 • sales@americanholt.com • www.americanholt.com

# 53P and 58P Seamers

AFTER MARKET PARTS FOR:

## 53P AND 58P SEAMING TURRET



**NOTICE:** All parts offered by American Holt are manufactured by or for American Holt and not by or for the Original Equipment Manufacturer. Part numbers shown that are those of the Original Equipment Manufacturer, if any, are used for reference purposes only. American Holt is an independent supplier of quality replacement parts having no affiliation with any Original Equipment Manufacturer. All prices are subject to change without notice. Copyright ©2020 American Holt Corp. All rights reserved.

IN-STOCK AND READY TO SHIP.

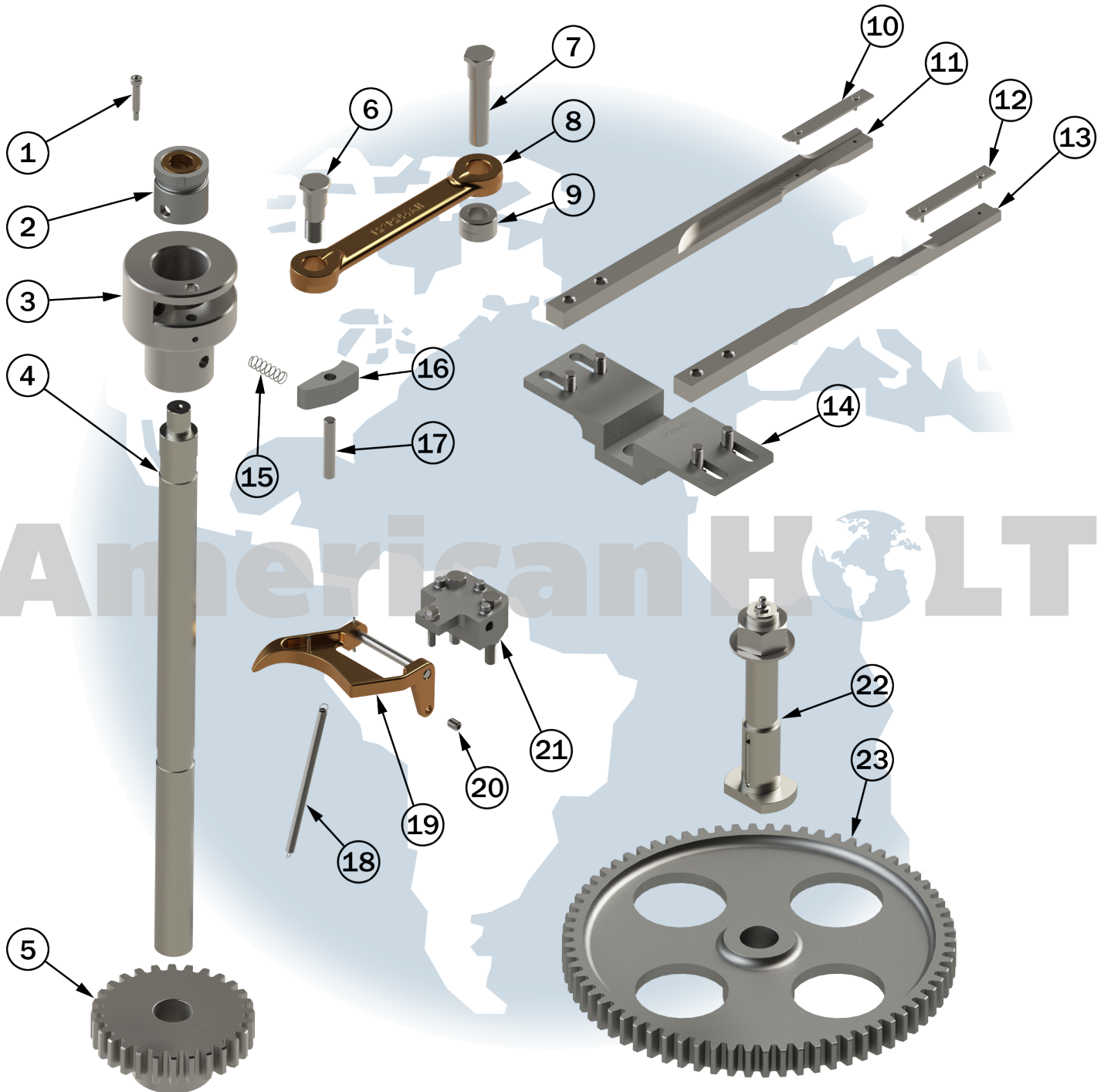
ITEM NO.	PART NO.	DESCRIPTION	QTY
1	58P220AH	Cap Centering Cam	1
1.1	15P220AH	Cap Centering Cam Spring	2
N/A	116P243AH	Knockout Cam	1
2	20P228AH	D.S. Spindle Adjustment Screw	3
3	30P241AH	Upper Turret Adjustment Sleeve	3
4	17V241AH	Upper Spindle Ball Bearing	3
5	3V423AH	D.S. Head Drive Gear	3
5.5	3P247AH	Discharge Gear Key	3
6	112P223AH	D.S. Cam Drive Gear	3
7	26P216AH	Ball Bearing	3
N/A	604P641AH	Lower Head Bearing	3
8	11P820AH	D.S. Cam	3
8.1	2P247AH	Key, 1/4 X 1/2 X 1-7/8	3
8.2	22P241AH	D.S. Cam Set Screw	3
9	1P241AH	D.S. Head Assembly Sleeve	3
10	21P241AH	Head Spring	12
11	49P244AH	Knockout Plate, 211 to 404 Dia.	3
12	5P244AH	Knockout Rod	3
12.1	9P228AH	Knockout Rod End	3
13	12P240AH	Heavy Duty Knockout Rod Spring	3
14	4P244AH	Upper Chuck Spindle	3
15	16P544AH	Center Shaft	1
16	54P523AH	D.S. Center Gear	1
17	28P216AH	Upper Turret Ball Bearing	1

**FOR MORE INFORMATION, CONTACT AMERICAN HOLT AT:**  
781-440-9993 • sales@americanholt.com • www.americanholt.com

# 53P and 58P Seamers

AFTER MARKET PARTS FOR:

## 53P AND 58P CAP FEED



**NOTICE:** All parts offered by American Holt are manufactured by or for American Holt and not by or for the Original Equipment Manufacturer. Part numbers shown that are those of the Original Equipment Manufacturer, if any, are used for reference purposes only. American Holt is an independent supplier of quality replacement parts having no affiliation with any Original Equipment Manufacturer. All prices are subject to change without notice. Copyright ©2020 American Holt Corp. All rights reserved.

IN-STOCK AND READY TO SHIP.

ITEM NO.	PART NO.	DESCRIPTION	QTY
N/A	77P556AH	Cap Feed Guard	1
1	9L626AH	Door Latch Bolt	2
N/A	15L628AH	Door Hinge	2
N/A	1P440AH	Door Latch Spring	2
N/A	15P244AH	Head Guard Pin	1
N/A	145P554AH	Cap Feed Drive Guard	1
N/A	20P544AH	Upper Cap Feed Shaft	1
N/A	113P256AH	Cap Feed Brake Bracket	1
N/A	115P256AH	Cap Feed Brake Shoe	1
N/A	116P256AH	Cap Feed Brake Spring Screw	1
N/A	114P256AH	Cap Feed Brake Drum	1
N/A	11P240AH	Cap Feed Brake Spring	1
2	1P282AH	NC NC Drive Bushing (INCLUDES HARDWARE)	1
3	2P282AH	NC NC Drive Hub	1
4	19P544AH	Lower Cap Feed Bottom Infeed Shaft (INCLUDES HARDWARE)	1
5	3P523AH	Cap Feed Drive Gear	1
N/A	76P556AH	Cap Feed Crank	1
6	13P256AH	Crank Bolt	1
7	12P256AH	Slide Bolt	1
8	129P256AH	Std. Duty Cap Feed Link	1
9	10P256AH	Spacing Collar	1
10	15P556AH	LH Knife (INCLUDES HARDWARE)	1

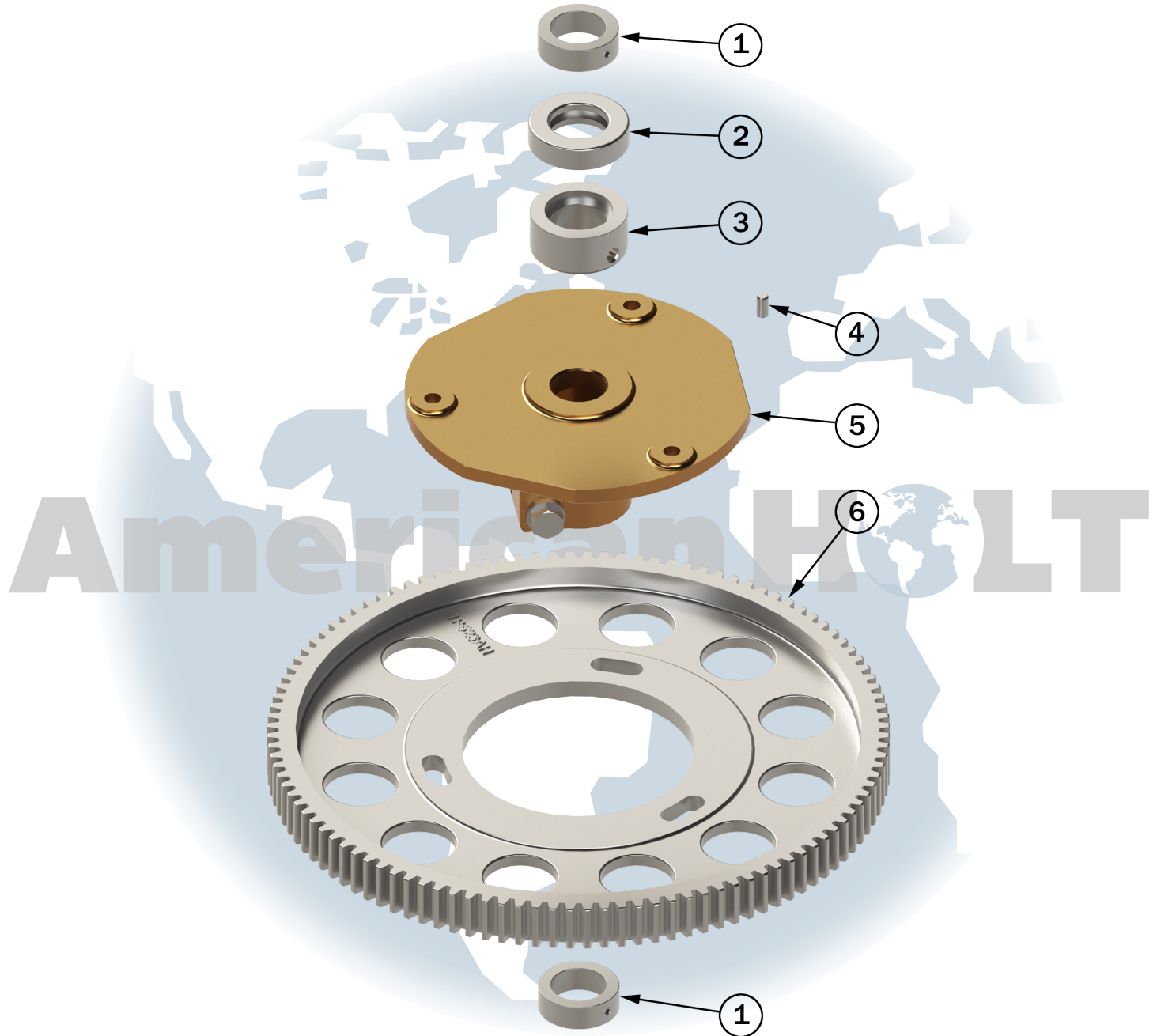
ITEM NO.	PART NO.	DESCRIPTION	QTY
11	90P556AH	LH Separator Knife	1
12	14P556AH	RH Knife (INCLUDES HARDWARE)	1
13	89P556AH	LH Separator Knife	1
N/A	99P556AH	Center Pusher	1
N/A	101P556AH	Cap Magazine Block	1
14	1P556AH	Cap Feed Slide (INCLUDES HARDWARE)	1
N/A	3P256AH	Cap Feed Slide Plate	1
N/A	15P516AH	Cap Magazine Spacer	1
15	10P266AH	Drive Pawl Spring	1
16	8P266AH	NC NC Pawl	1
17	11P266AH	Drive Pawl Pin	1
18	10P282AH	Trip Knee Spring	1
19	4P282AH	NC NC Trip Knee	1
19.1	31P282AH	Pin	1
20	13P282AH	Clevis Pin	2
21	18P282AH	NC NC Trip Knee Bracket (INCLUDES HARDWARE)	1
N/A	11P282AH	Adjusting Yoke End	2
N/A	5P682AH	NC NC Trip Lever	1
22	9P264AH	Gear Stud (INCLUDES HARDWARE)	1
23	5P523AH	Intermediate Cap Feed Gear	1
N/A	9L653AH	Trip Lever Shaft Collar	1
N/A	11P256AH	Cap Magazine Post	4

**FOR MORE INFORMATION, CONTACT AMERICAN HOLT AT:**  
781-440-9993 • sales@americanholt.com • www.americanholt.com

# 53P and 58P Seamers

AFTER MARKET PARTS FOR:

## 53P FEED TURRET



**NOTICE:** All parts offered by American Holt are manufactured by or for American Holt and not by or for the Original Equipment Manufacturer. Part numbers shown that are those of the Original Equipment Manufacturer, if any, are used for reference purposes only. American Holt is an independent supplier of quality replacement parts having no affiliation with any Original Equipment Manufacturer. All prices are subject to change without notice. Copyright ©2020 American Holt Corp. All rights reserved.

IN-STOCK AND READY TO SHIP.

ITEM NO.	PART NO.	DESCRIPTION	QTY
1	6P253AH	Collar 1.688 (INCLUDES HARDWARE)	2
N/A	16P563AH	Feed Pocket Hub	1
N/A	32P228AH	Clamping Pin	2
2	21P216AH	Ball Thrust Bearing	1
N/A	37P544AH	Feed Turret Shaft	1
3	1P253AH	Set Collar 1.6875	1
4	16P228AH	Dowel Pin 0.373 X 0.375 X 0.750 GL	8
5	13P223AH	Feed Turret Gear Hub (B) (INCLUDES HARDWARE)	1
6	1P523AH	Feed Turret Gear 6P 112T	1

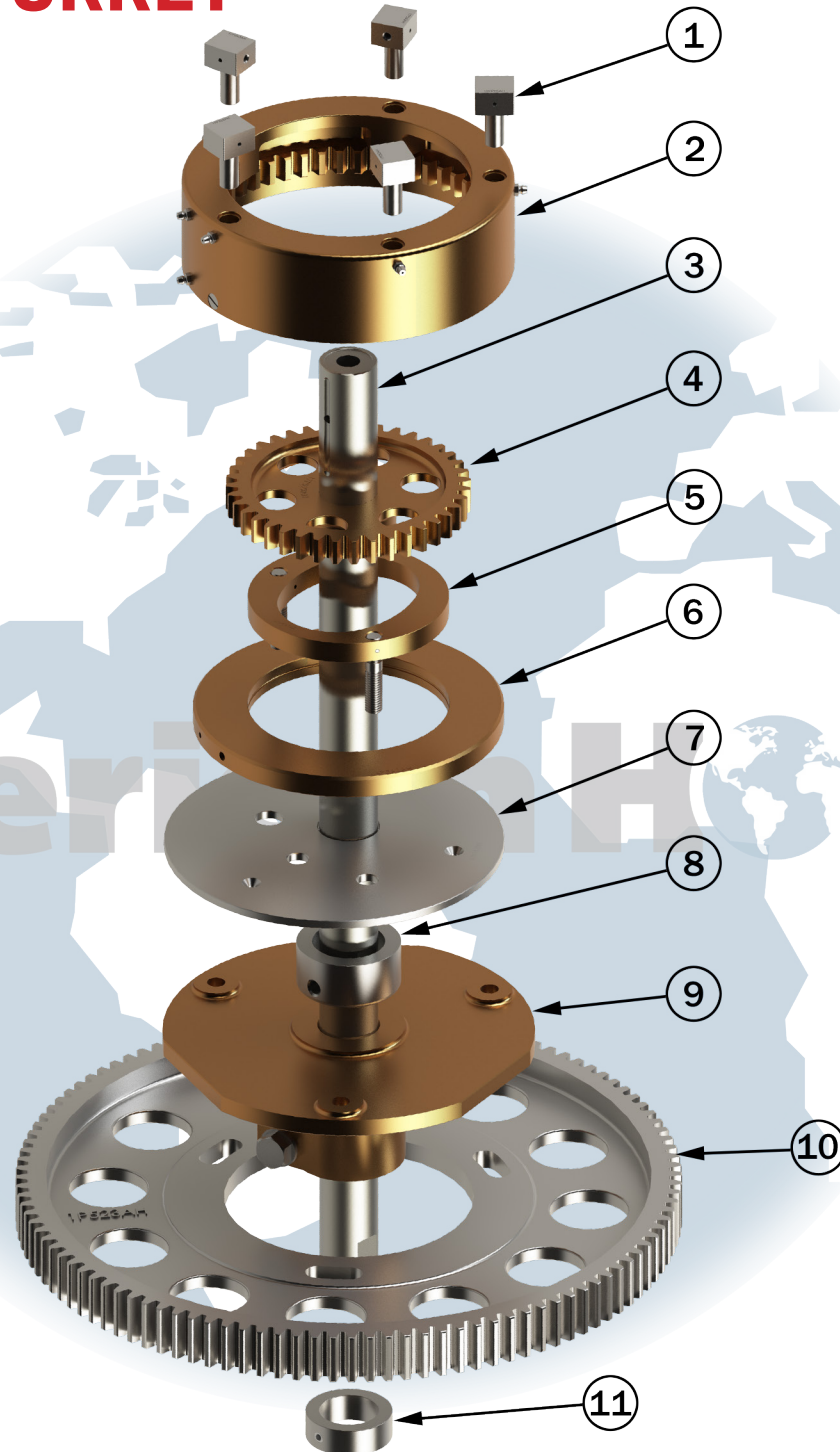
**FOR MORE INFORMATION, CONTACT AMERICAN HOLT AT:**  
781-440-9993 • sales@americanholt.com • www.americanholt.com



# 53P and 58P Seamers

AFTER MARKET PARTS FOR:

## 58P FEED TURRET



**NOTICE:** All parts offered by American Holt are manufactured by or for American Holt and not by or for the Original Equipment Manufacturer. Part numbers shown that are those of the Original Equipment Manufacturer, if any, are used for reference purposes only. American Holt is an independent supplier of quality replacement parts having no affiliation with any Original Equipment Manufacturer. All prices are subject to change without notice. Copyright ©2020 American Holt Corp. All rights reserved.



IN-STOCK AND READY TO SHIP.

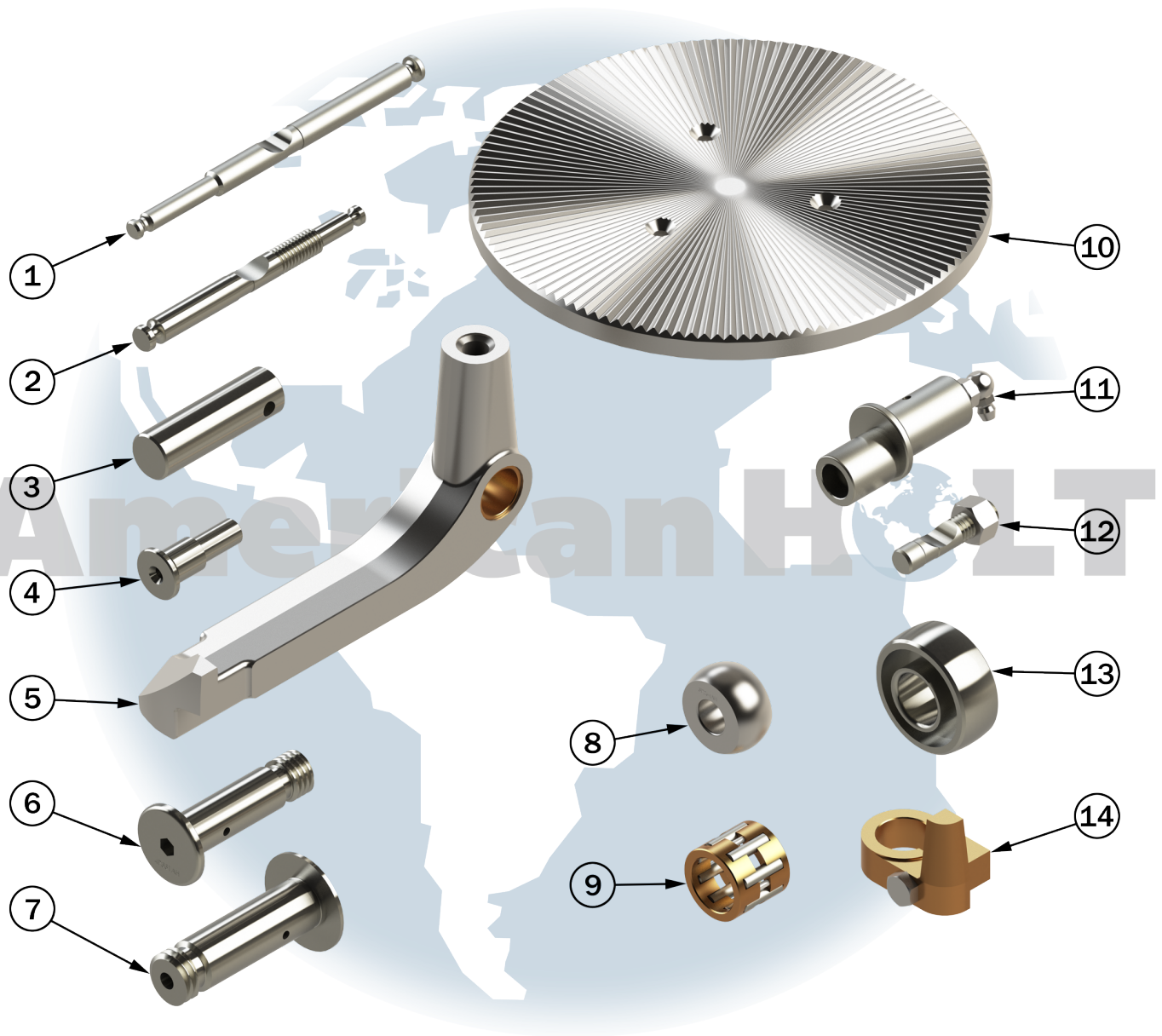
ITEM NO.	PART NO.	DESCRIPTION	QTY
N/A	23P226AH	Cap Screw	1
N/A	15P563AH	Feed Arm Washer	1
N/A	10/14P563AH	Feed Arm	5
N/A	16P228AH	Dowel Pin, 0.373 X 0.375 X 0.750 GL	10
1	18P263AH	Feed Arm Slide	5
2	16P523AH	Internal Feed Gear (INCLUDES HARDWARE)	1
3	14P544AH	Feed Turret Shaft	1
4	17P523AH	Feed Arm Drive Gear (INCLUDES HARDWARE)	1
5	7P562AH	Feed Arm Eccentric (INCLUDES HARDWARE)	
6	6P562AH	Internal Feed Gear Liner	1
7	42P543AH	Feed Frame Plate	1
8	1P253AH	Collar	1
9	13P223AH	Feed Turret Gear Hub (B) (INCLUDES HARDWARE)	
10	1P523AH	Feed Turret Gear, 112 Teeth	1
11	6P253AH	Collar (INCLUDES HARDWARE)	1

**FOR MORE INFORMATION, CONTACT AMERICAN HOLT AT:**  
781-440-9993 • sales@americanholt.com • www.americanholt.com

# 53P and 58P Seamers

AFTER MARKET PARTS FOR:

## 53P CHANGE PARTS



**NOTICE:** All parts offered by American Holt are manufactured by or for American Holt and not by or for the Original Equipment Manufacturer. Part numbers shown that are those of the Original Equipment Manufacturer, if any, are used for reference purposes only. American Holt is an independent supplier of quality replacement parts having no affiliation with any Original Equipment Manufacturer. All prices are subject to change without notice. Copyright ©2020 American Holt Corp. All rights reserved.

IN-STOCK AND READY TO SHIP.

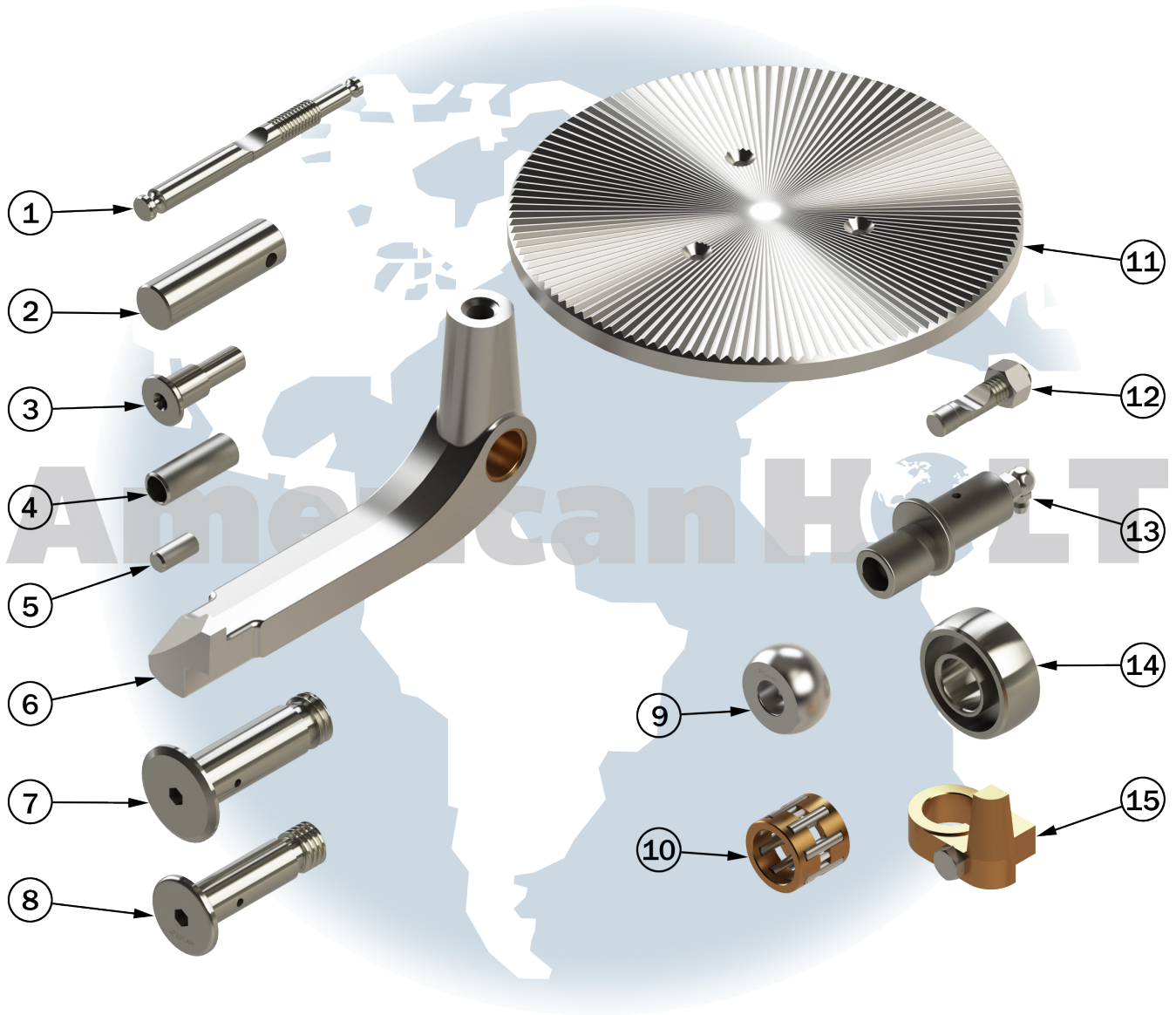
ITEM NO.	PART NO.	DESCRIPTION	QTY
1	17P241AH	Pin	6
2	18P241AH	2nd Operation Clamping Pin	6
3	10P667AH	Cap Pusher Pin	4
4	2P264AH	Cam Roll Cap Pusher Pin	4
5	3P559AH	Cap Pusher	4
6	5P241AH	2nd Operation Roll Pin	6
7	4P331AH	1st Operation Seaming Roll Pin	6
8	3P264AH	Cap Pusher Pin Cam Roll	4
9	107L616AH	1st & 2nd Operation Seaming Roll Bearing	6
10	1P537AH	Lower Chuck Plate	3
11	15P241AH	Cam Roll Excentric Pin	12
12	20P241AH	Clamping Pin	12
13	7P241AH	Cam Roll	12
14	19P241AH	Indicator Pin (INCLUDES HARDWARE)	12
N/A	53P216AH	D.S. Roll Washer	6
N/A	54P216AH	Comp Roll Washer	6
N/A	12P241AH	Comp Seaming Roll	6
N/A	13P241AH	D.S. Roll Washer	6
N/A	59P216AH	1st Operation Seaming Roll Bearing	6

**FOR MORE INFORMATION, CONTACT AMERICAN HOLT AT:**  
781-440-9993 • sales@americanholt.com • www.americanholt.com

# 53P and 58P Seamers

AFTER MARKET PARTS FOR:

## 58P CHANGE PARTS



**NOTICE:** All parts offered by American Holt are manufactured by or for American Holt and not by or for the Original Equipment Manufacturer. Part numbers shown that are those of the Original Equipment Manufacturer, if any, are used for reference purposes only. American Holt is an independent supplier of quality replacement parts having no affiliation with any Original Equipment Manufacturer. All prices are subject to change without notice. Copyright ©2020 American Holt Corp. All rights reserved.

IN-STOCK AND READY TO SHIP.

\* Item made-to-order

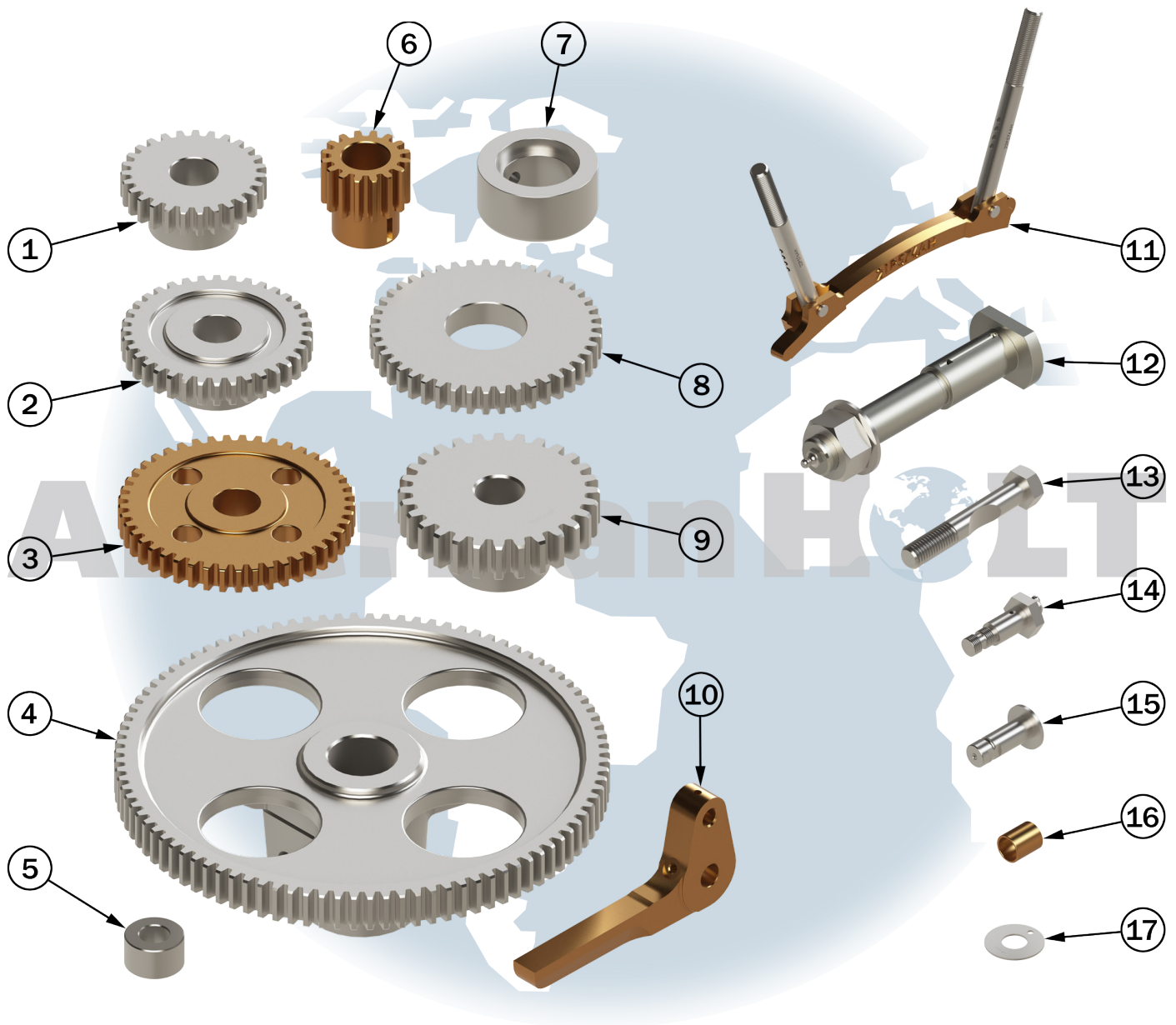
ITEM NO.	PART NO.	DESCRIPTION	QTY
1	18P241AH	2nd Operation Clamping Pin	6
2	10P667AH	Cap Pusher Pin	5
3	2P264AH	Cam Roll Pin Cap Pusher	5
4	3P653AH	Steam Vacuum Feed Pocket	5
5	10P528AH	Steam Vacuum Valve Ring Drive Pin (SS)	5
6	3P559AH	Cap Pusher	5
7	5P241AH	2nd Operation Roll Pin	6
8	4P331AH	1st Operation Seaming Roll Pin	6
9	3P264AH	Cap Pusher Pin Cam Roll	5
10	107L616AH	1st & 2nd Operation Seaming Roll Bearing	6
11	1P537AH	Lower Chuck Plate	3
12	20P241AH	Clamping Pin (INCLUDES HARDWARE)	12
13	15P241AH	Cam Roll Eccentric Pin	12
14	7P241AH	Roll Cam	12
15	19P241AH	Indicator Pin (INCLUDES HARDWARE)	12
N/A	16P433AH	Cover Stop Magnet	1
N/A	114P454AH	Magnet Holder Cover Plate	1
N/A	100P556AH	Cover Feed Magnet Holder	1
N/A	33P516AH	Cap Magazine Inserts	2
N/A	53P216AH	D.S. Roll Washer	6
N/A	54P216AH	Comp Roll Washer	6
N/A	12P241AH	Comp SMG Roll	6
N/A	13P241AH	Double SMG Roll	6
N/A	59P216AH	1st Operation Seaming Roll Bearing	6

**FOR MORE INFORMATION, CONTACT AMERICAN HOLT AT:**  
781-440-9993 • sales@americanholt.com • www.americanholt.com

# 53P and 58P Seamers

AFTER MARKET PARTS FOR:

## 53P CAN FEED



**NOTICE:** All parts offered by American Holt are manufactured by or for American Holt and not by or for the Original Equipment Manufacturer. Part numbers shown that are those of the Original Equipment Manufacturer, if any, are used for reference purposes only. American Holt is an independent supplier of quality replacement parts having no affiliation with any Original Equipment Manufacturer. All prices are subject to change without notice. Copyright ©2020 American Holt Corp. All rights reserved.



IN-STOCK AND READY TO SHIP.

\* Item made-to-order

ITEM NO.	PART NO.	DESCRIPTION	QTY
1	9P523AH	Drive Gear	1
2	10P523AH	Auxiliary Timer Intermediate Gear	1
3	13P523AH	Intermediate Gear	2
4	11P623AH	Timer Drive Gear	1
5	17P346AH	Cam Roll	6
6	37P223AH	Intermediate Pinion Gear for Timer	1
7	1P253AH	Collar	1
8	15P523AH	Auxiliary Timer Gear	1
9	4P523AH	Timer Intermediate Gear	1
10	31P576AH	Timing Star Finger	6
11	21P576AH	Tension Rail	3
11.1	22P576AH	Tensioner Rail Pin	6
12	9P264AH	Gear Stud (INCLUDES HARDWARE)	2
13	10P616AH	Pinch Bolt	2
14	33P576AH	Finger Pin	6
15	34P576AH	Pin Cam Roll	6
16	35P576AH	Cam Roll Bushing	6
17	11P204AH	D.S. Roll Washer	6

ITEM NO.	PART NO.	DESCRIPTION	QTY
N/A	14P520AH	Cap Centering and Knockout Cam	1
N/A	38P223AH	Intermediate Gear for Timer	1
N/A	8P523AH	Auxiliary Timer Gear	1
N/A	14P523AH	Auxiliary Timer Gear	1
N/A	3P526AH	Adjusting Screw	1
N/A	37P543AH	Feed Table w/ Wear Plate	1
N/A	180P543AH	Feed Frame Extension Block	1
N/A	36P544AH	Timer Shaft	1
N/A	201P554AH	Feed Table Gear Guard	1
N/A	318P554AH	Name Plate	1
N/A	36P669AH	Adjusting Support	1
N/A	1P576AH	Aux Timer Star	1
N/A	2P576AH	Aux Timer Rail Bracket	1
N/A	11P576AH	Aux Timer Bracket	1
N/A	13P576AH	Aux Timer Intermediate Shaft	2
N/A	14P576AH	Aux Timer Shaft	1
N/A	25P576AH	Aux Timer Star	1
N/A	30P576AH	Timer Disc Hub w/ Wear Plate	1
N/A	32P576AH	Timer Star Finger Hub Assembly	6
N/A	5P290AH	Tension Rail Spring	6

**FOR MORE INFORMATION, CONTACT AMERICAN HOLT AT:**  
781-440-9993 • sales@americanholt.com • www.americanholt.com