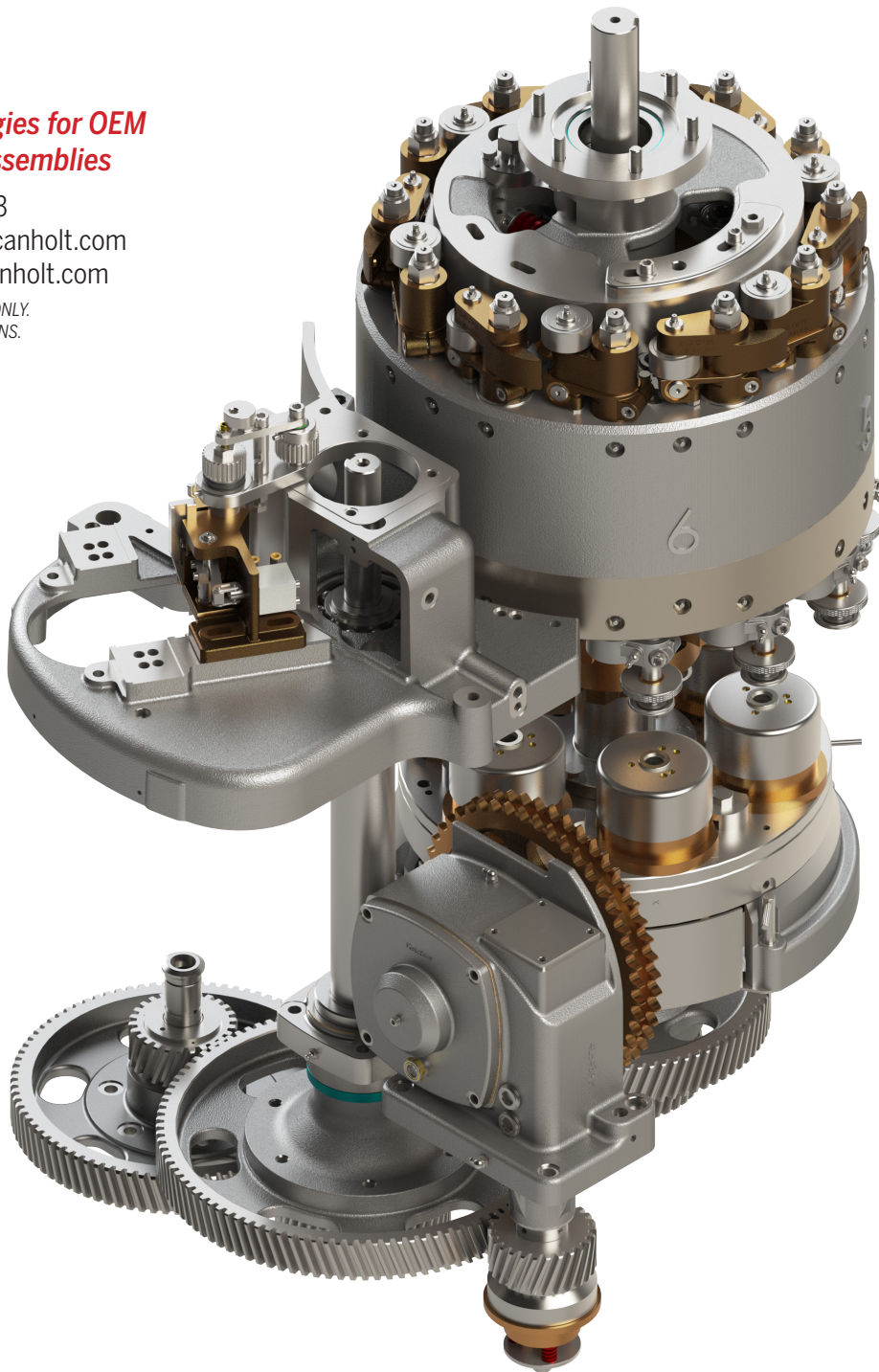


# 60L Seamer

***MRO strategies for OEM  
parts and assemblies***

781-440-9993  
sales@americanholt.com  
www.americanholt.com

FOR INTERNAL USE ONLY.  
SUBJECT TO REVISIONS.





**American Holt is a full-service engineering firm focused on the reverse engineering of high-usage machinery components. Founded in 1995, American Holt manufactures aftermarket replacement parts for machines used by the beverage, food processing, packaging, and paper converting industries. We provide engineered savings to customers around the world.**

**CONTACT:**

American Holt  
203 Carnegie Row  
Norwood, MA 02062  
781-440-9993  
sales@americanholt.com

**HOURS:**

Monday-Friday  
8:00am to 5:00pm EST

**SALES:**

Tom St. Lawrence, President  
Charlene Butts, Sales Manager

**NOTICE:**

*All parts offered by American Holt are manufactured by or for American Holt and not by or for the Original Equipment Manufacturer. Part numbers shown that are those of the Original Equipment Manufacturer, if any, are used for reference purposes only. American Holt is an independent supplier of quality replacement parts having no affiliation with any Original Equipment Manufacturer. All prices are subject to change without notice.*

*Copyright ©2023 American Holt Corp. All rights reserved.*



# Table of Contents

---

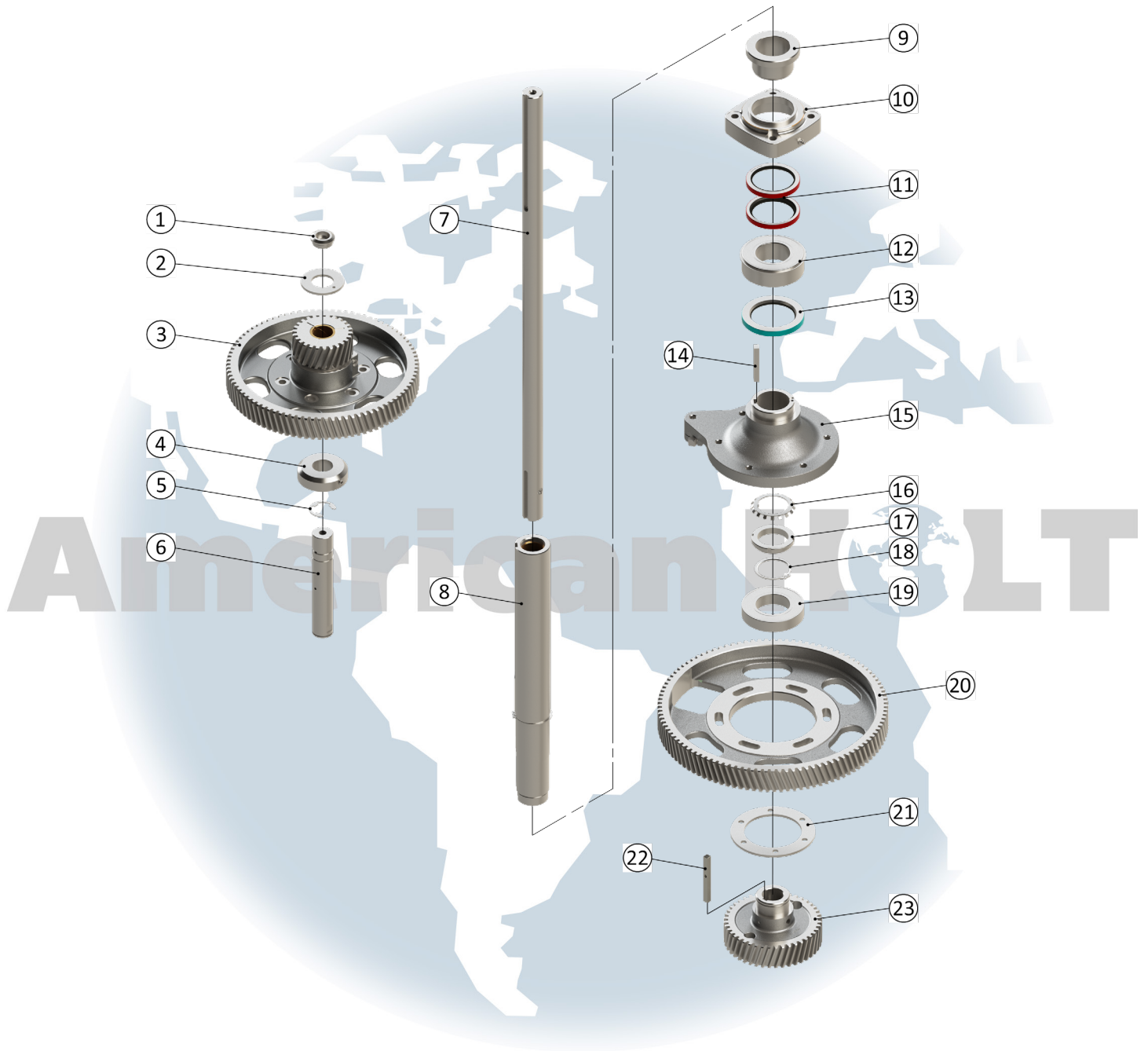
## 60L Seamer

BASE .....	2
LOWER TURRET.....	4
UPPER TURRET .....	6
LOWER CHUCK.....	8
14L600-ATMOSAH LOWER DRIVEN LIFTER ASSEMBLY, ATMOSPHERE .....	10
14L600-ATMOSAH LOWER DRIVEN LIFTER ASSEMBLY, STEAM .....	12
CSDLL-CONVERAH DRIVEN LIFTER CONVERSION KIT, ATMOSPHERE .....	14
SVDLL-CONVERAH DRIVEN LIFTER CONVERSION KIT, STEAM/VACUUM .....	16
60L-LCSAAH NON DRIVEN LOWER LIFTER ASSEMBLY .....	18
SEAMING SPINDLE .....	20
SEAMING LEVER - 1st OPERATION .....	22
SEAMING LEVER - 2nd OPERATION.....	24
CAP FEED.....	26
CAP FEED SINGLE SEPARATOR 60L-SINGLESEPARATORAH .....	28
COVER FEED PART 1.....	30
COVER FEED PART 2 .....	32
FILLER DRIVE .....	34
IN-MOTION TIMER - 1387577-MAH .....	36
CAN FEED AND DISCHARGE CANNERY A.....	38
CAN FEED AND DISCHARGE CANNERY B.....	40
CAN FEED AND DISCHARGE CAN SHOP A .....	42
CAN SHOP EXTRAS.....	44
CANNERY EXTRAS .....	46
STEAM VACUUM.....	48
CHANGE PARTS - STEAM VACUUM - 211 DIA .....	50
CHANGE PARTS - STEAM VACUUM - 300 DIA.....	52
CHANGE PARTS - STEAM VACUUM - 307 DIA .....	54
CHANGE PARTS - STEAM VACUUM - 401 DIA .....	56
CHAINS AND SPROCKETS .....	58

# 60L Seamer

AFTER MARKET PARTS FOR:

## BASE



**NOTICE:** All parts offered by American Holt are manufactured by or for American Holt and not by or for the Original Equipment Manufacturer. Part numbers shown that are those of the Original Equipment Manufacturer, if any, are used for reference purposes only. American Holt is an independent supplier of quality replacement parts having no affiliation with any Original Equipment Manufacturer. All prices are subject to change without notice. Copyright ©2019 American Holt Corp. All rights reserved.

IN-STOCK AND READY TO SHIP.

## BASE

ITEM NO.	PART NO.	DESCRIPTION	QTY
1	56L616AH	Intermediate Shaft Clamp Washer	1
2	57L616AH	Intermediate Shaft Upper Washer	1
3	15L600AH	Intermediate Driven Gear (INCLUDES HARDWARE)	1
3.1	15L623AH	Intermediate Driven Gear	1
3.2	16L623AH	Cap Feed Turret Drive Pinion (INCLUDES HARDWARE)	1
3.3	10L647AH	Intermediate Drive Gear Key	1
4	13L653AH	Intermediate Gear Shaft Collar (INCLUDES HARDWARE)	1
5	4L617AH	Retaining Ring - Nickel Plated	1
6	9L644AH	Intermediate Gear Shaft	1
6.1	24L617AH	Intermediate Shaft Retaining Ring	1
N/A	503L654AH	Guard For Base Gearing	2
7	10L644AH	Cap Feed Drive Shaft	1
8	11L644AH	Cap Feed Turret Hollow Drive Shaft, 21.375" Long, Atmosphere 108-712, Steam 108-500 (INCLUDES HARDWARE)	1
8.1	26L617AH	Retaining Ring - Nickel Plated	1
9	14L653AH	Cap Feed Hollow Shaft Spacer	1
10	21L617AH	Cap Feed Turret Shaft Bearing Flange (INCLUDES HARDWARE)	1
11	1P615AH	Oil Seal	2
12	13L616AH	Ball Bearing	1
N/A	731L643AH	Base	1

ITEM NO.	PART NO.	DESCRIPTION	QTY
N/A	924L654AH	Lube ID Plate	1
N/A	24L643AH	Base Leg	4
N/A	4L654AH	Intermediate Gear Guard	1
	72L616AH (NOT SHOWN)	Switch Lever Shaft Bushing	1
13	4L615AH	Oil Seal	1
14	11L647AH	Cap Feed Turret Gear Key	1
15	25L623AH	Cap Feed Turret Gear Hub (IN- CLUDES HARDWARE)	1
16	20L616AH	Bearing Lockwasher	1
17	21L616AH	Bearing Locknut	1
18	5L617AH	Retaining Ring	1
19	11L616AH	Ball Bearing	1
20	17L623AH	Cap Feed Turret Gear 104 Teeth	1
21	20L617AH	Cap Feed Drive Pinion Bearing Retainer	1
22	12L647AH	Cap Feed Drive Pinion Key	1
23	21L623AH	Cap Feed Drive Pinion Gear 44 Teeth	1
N/A	730L643AH	Base Top Plate	1
N/A	733L643AH	Base Trough	1
N/A	108L614AH	Lubrication Block	1
N/A	176H644AH	Extension Worm Shaft	1
N/A	897L654AH	Guard Filler Drive	1
N/A	903L654AH	Latch Feed Sprocket Guard	1

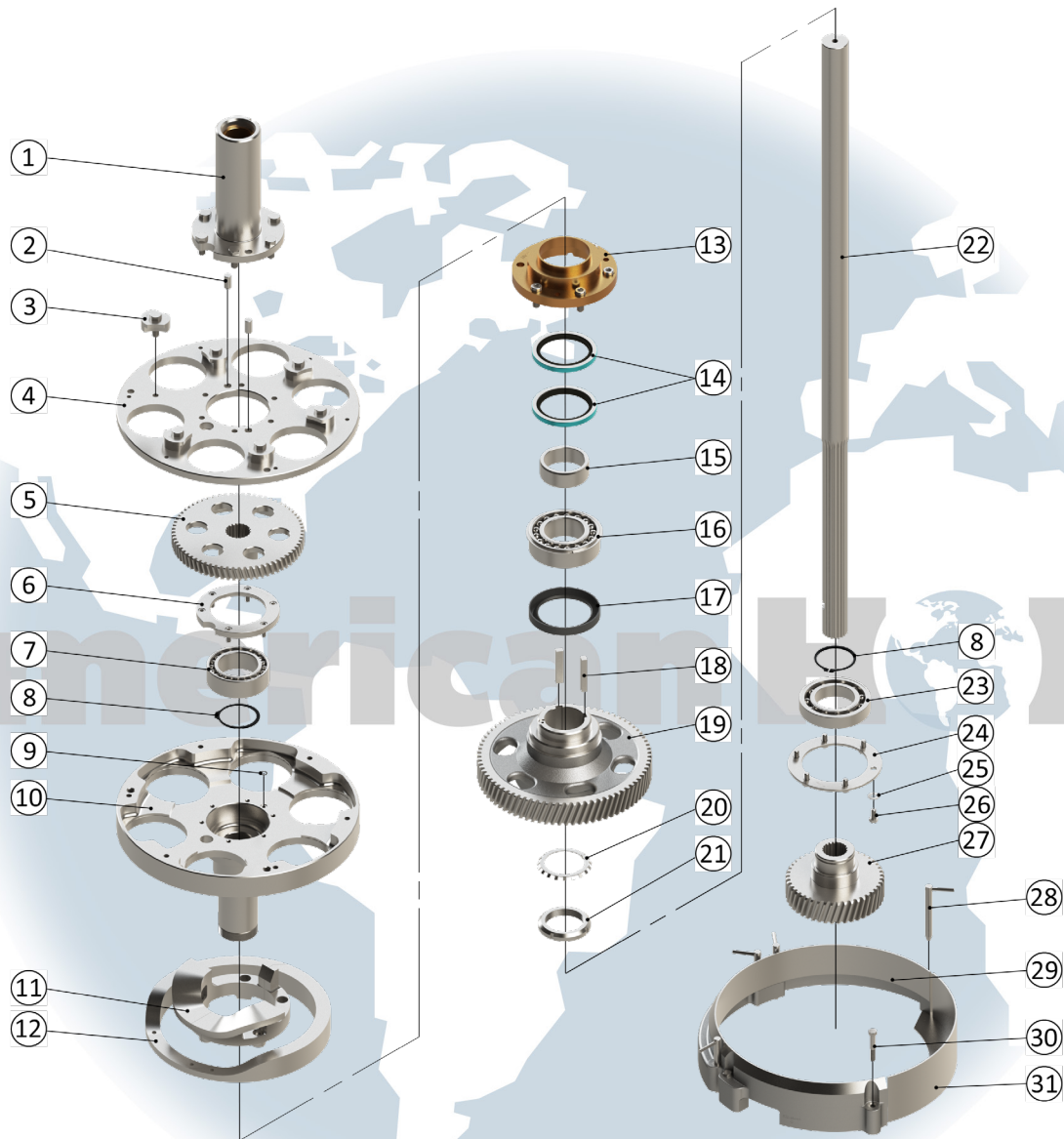
\* - Item made-to-order    N/A - Item is not currently offered by American Holt

**FOR MORE INFORMATION, CONTACT AMERICAN HOLT AT:**  
781-440-9993 • sales@americanholt.com • www.americanholt.com

# 60L Seamer

AFTER MARKET PARTS FOR:

## LOWER TURRET



**NOTICE:** All parts offered by American Holt are manufactured by or for American Holt and not by or for the Original Equipment Manufacturer. Part numbers shown that are those of the Original Equipment Manufacturer, if any, are used for reference purposes only. American Holt is an independent supplier of quality replacement parts having no affiliation with any Original Equipment Manufacturer. All prices are subject to change without notice. Copyright ©2019 American Holt Corp. All rights reserved.

IN-STOCK AND READY TO SHIP.

## LOWER TURRET

ITEM NO.	PART NO.	DESCRIPTION	QTY
1	475L664AH (SEE PAGES 14-15)	Lower Turret Hollow Shaft (NOT SOLD SEPARATELY)	1
2	7H628AH	Dowel Pin 0.498 X 0.500 X 1.000	2
3	70L617AH	Lower Chuck Slide Bearing Clamp (INCLUDES HARDWARE)	6
4	78L627AH (SEE PAGES 14-15)	Lower Turret Top (NOT SOLD SEPARATELY)	1
5	150L623AH	Lower Chuck Drive Gear 69T - Steam	1
6	66L617AH	Bearing Retainer (INCLUDES HARDWARE)	1
7	8H616AH	Ball Bearing 2.7559 X 4.3307 X 1.4173	1
8	6L617AH	Retaining Ring	2
9	12S815AH	O-Ring #012 0.375 X 0.500 X 0.070	1
10	79L627AH (SEE PAGES 14-15)	Lower Turret Bottom (NOT SOLD SEPARATELY)	1
11	67L620AH	Lower Chuck Return Cam - Atmosphere	1
12	22L620AH	Lower Chuck Cam - Atmosphere	1
13	17L617AH	Lower Turret Bearing Flange (INCLUDES HARDWARE)	1
14	9L615AH	Oil Seal 3.4386 X 4.5000 X .4690	2
15	339L653AH	Seal Sleeve	1
16	15L616AH	Ball Bearing 2.7559 X 4.9213 X 1.5625	1
17	7L615AH	Oil Seal 3.750 X 4.928 X 0.625	1
18	8L647AH	Lower Turret Gear Key	2
19	18L623AH	Lower Turret Gear RH	1
20	22L616AH	Bearing Lockwasher	1
21	23L616AH	Bearing Locknut	1
22	474L644AH	Vertical Drive Shaft	1
23	26P216AH	Ball Bearing (SHIELDED)	1
24	18L617AH	Intermediate Drive Pinion Bearing Retainer (INCLUDES HARDWARE)	1
25	ZZ-WASHFLAT-SS-0.41X0.81X0.06	Washer	6
26	ZZ-HHBOLT-SS-0.375-16X0.75	Screw	6
27	148L623AH	Intermediate Drive Pinion 44T 7P (INCLUDES HARDWARE)	1
28	6L628AH	Lower Turret Guard Pin	4
29	822L654AH	Lower Turret Guard	1
30	ZZ-HHBOLT-SS-0.375-16X2.25	Screw	2
31	829L654AH	Lower Turret Guard Extension	1

\* - Item made-to-order    N/A - Item is not currently offered by American Holt

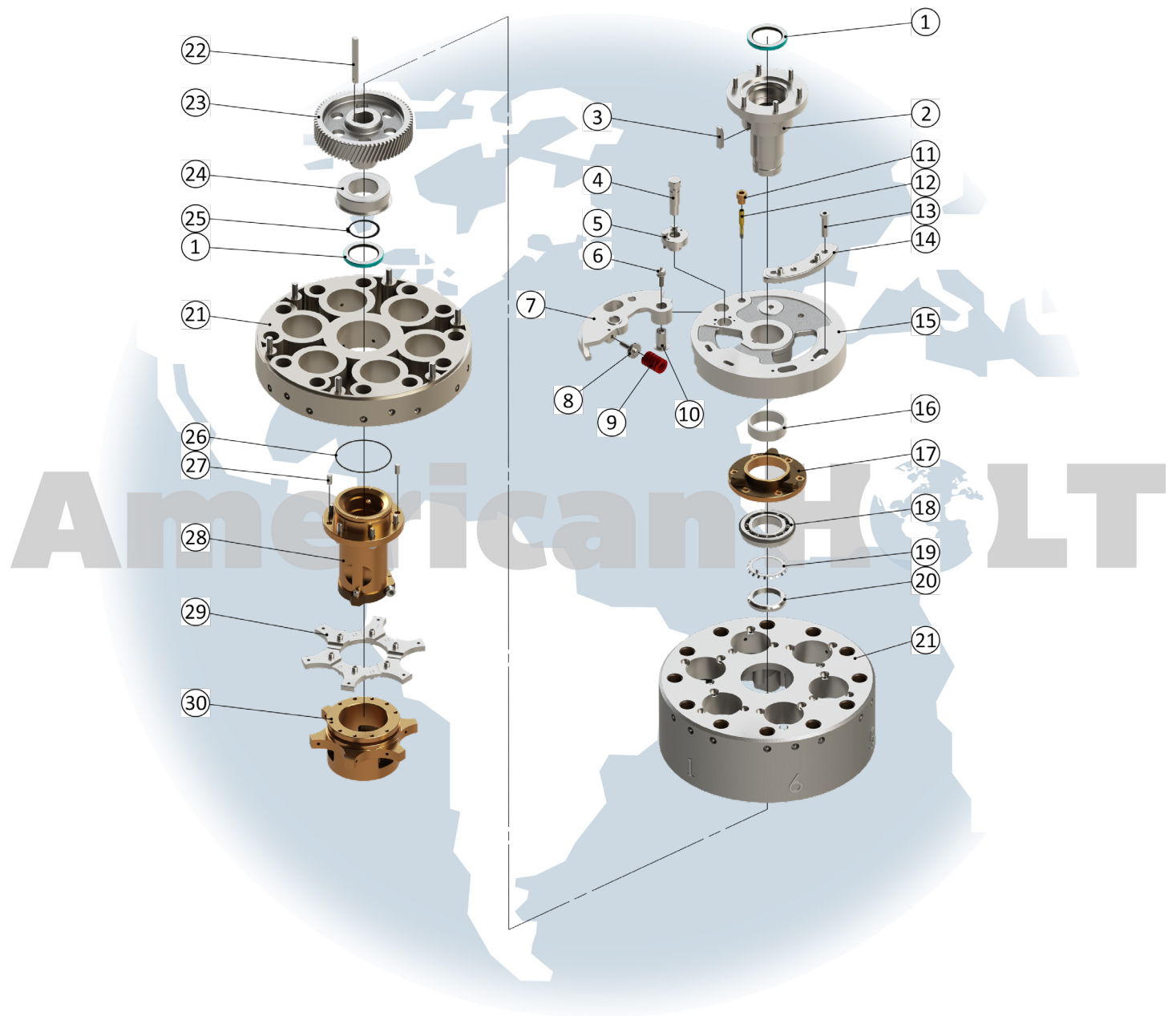
**FOR MORE INFORMATION, CONTACT AMERICAN HOLT AT:**  
781-440-9993 • sales@americanholt.com • www.americanholt.com



# 60L Seamer

AFTER MARKET PARTS FOR:

## UPPER TURRET



**NOTICE:** All parts offered by American Holt are manufactured by or for American Holt and not by or for the Original Equipment Manufacturer. Part numbers shown that are those of the Original Equipment Manufacturer, if any, are used for reference purposes only. American Holt is an independent supplier of quality replacement parts having no affiliation with any Original Equipment Manufacturer. All prices are subject to change without notice. Copyright ©2019 American Holt Corp. All rights reserved.

IN-STOCK AND READY TO SHIP.

## UPPER TURRET

ITEM NO.	PART NO.	DESCRIPTION	QTY
1	3L615AH	Oil Seal 2.750 X 3.750 X 0.437	2
2	15L641AH	Seaming Cam Hub (INCLUDES HARDWARE)	1
3	4L647AH	Seaming Cam Key	1
4	30L628AH	Seaming Cam Eccentric Pin (INCLUDES HARDWARE)	1
5	130L616AH	Seaming Cam Eccentric Pin Bearing (INCLUDES HARDWARE)	1
6	18L626AH	Seaming Cam Pivot Pin Screw (INCLUDES HARDWARE)	1
7	2L620AH	Seaming Cam Section - 2nd Operation	1
7.1	129L616AH	Seaming Cam Eccentric Bushing	1
8	7L626AH	Seaming Cam Spring Screw	1
9	6L640AH	Seaming Cam Spring - Red	1
10	4L628AH	Seaming Cam Pivot Pin	1
11	22L653AH	Oiler Brush Collar (INCLUDES HARDWARE)	1
12	3L614AH	Knockout Rod Oiler Brush	1
13	17L626AH	Cap Centering Cam Hollow Screw	1
14	16L641AH	Cap Centering Cam Holder (INCLUDES HARDWARE)	1
15	1L620AH	Seaming Cam - 1st Operation	1
	11L620AH (NOT SHOWN)	Knockout Cam	1
	10L620AH (NOT SHOWN)	Cap Centering Cam	1

ITEM NO.	PART NO.	DESCRIPTION	QTY
16	5L653AH	Seaming Cam Spacer	1
17	12L617AH	Seaming Turret Upper Bearing Retainer	1
18	14L616AH	Ball Bearing 2.7559 X 4.9213 X 0.9449	1
19	22L616AH	Bearing Lockwasher W-14	1
20	23L616AH	Bearing Locknut N-14	1
21	1L641AH (SEE PAGES 14-15)	Upper Seaming Turret (NOT SOLD SEPARATELY)	1
	60L616AH (NOT SHOWN)	Hardened Steel Ball 0.3125 Diameter	12
	17L640AH (NOT SHOWN)	Seaming Lever Take-Up Spring	12
22	1L647AH	Seaming Spindle Drive Gear Key	1
23	55L623AH	Seaming Spindle Drive Gear 69T 8P - Steam	1
24	16L616AH	Ball Bearing 2.7559 X 4.9213 X 1.5625	1
25	6L617AH	Retaining Ring	1
26	20L615AH	O-Ring #250 - 5.125 X 5.375 X 0.139	1
27	34L828AH	Dowel Pin 0.498 X 0.500 X 1.000	2
28	334L641AH (SEE PAGES 14-15)	Upper Turret Drive Hub (NOT SOLD SEPARATELY)	1
29	10L608AH	Seaming Chuck Bell Hub (INCLUDES HARDWARE)	1
30	50L608AH	Seaming Star Hub (INCLUDES HARDWARE)	1
30.1	1P254AH	Socket Head Set Screw	2

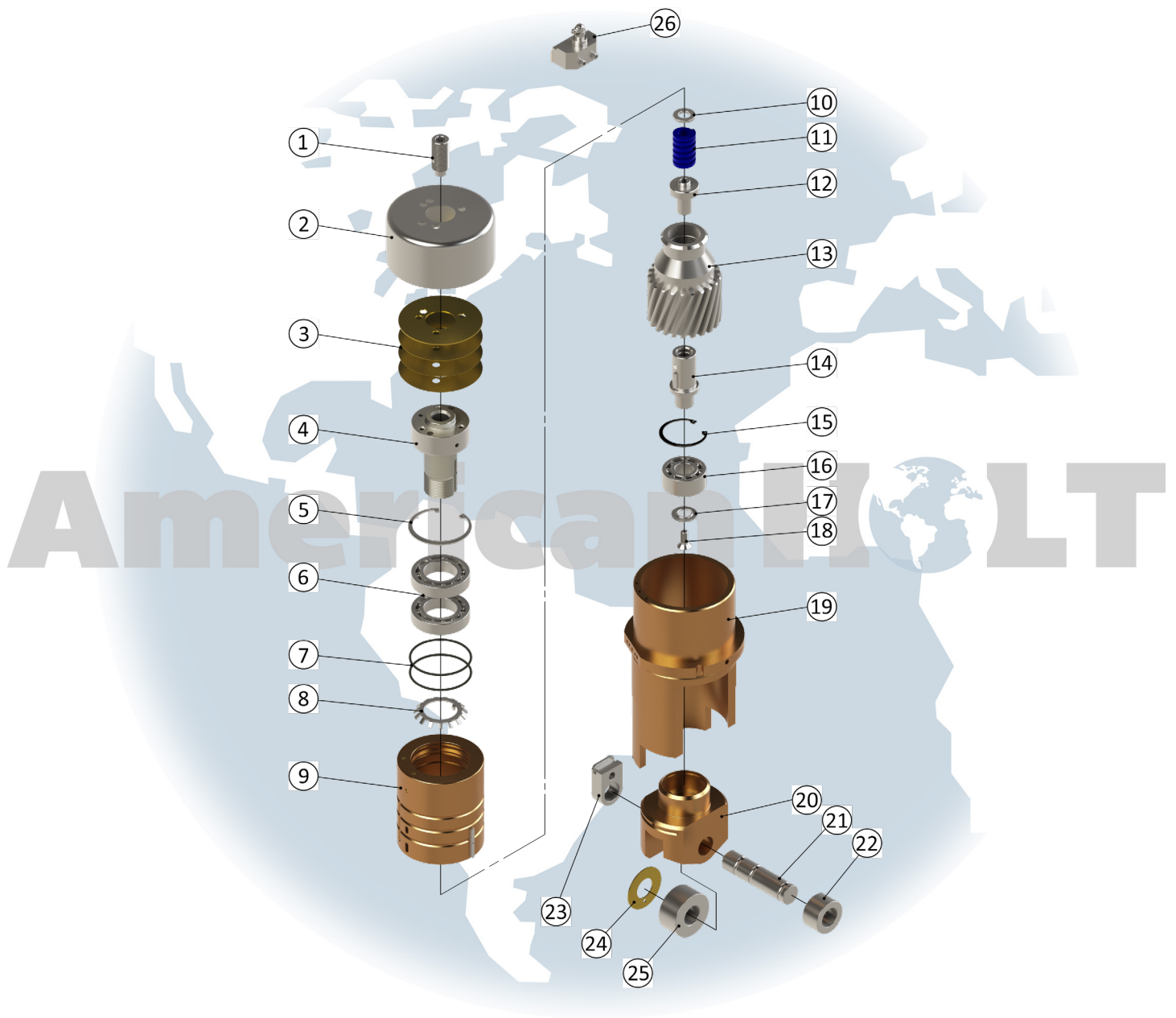
\* - Item made-to-order    N/A - Item is not currently offered by American Holt

**FOR MORE INFORMATION, CONTACT AMERICAN HOLT AT:**  
781-440-9993 • sales@americanholt.com • www.americanholt.com

# 60L Seamer

AFTER MARKET PARTS FOR:

## LOWER CHUCK



**NOTICE:** All parts offered by American Holt are manufactured by or for American Holt and not by or for the Original Equipment Manufacturer. Part numbers shown that are those of the Original Equipment Manufacturer, if any, are used for reference purposes only. American Holt is an independent supplier of quality replacement parts having no affiliation with any Original Equipment Manufacturer. All prices are subject to change without notice. Copyright ©2019 American Holt Corp. All rights reserved.

IN-STOCK AND READY TO SHIP.

## LOWER CHUCK

ITEM NO.	PART NO.	DESCRIPTION	QTY
	7L826AH (NOT SHOWN)	Domed Lower Chuck Plate Screw (Can Shop Only)	1
N/A	L837AH	Lower Chuck Flange Plate (Can Shop Only)	1
N/A	L837AH	Lower Chuck Plate	1
1	8L826AH	Lower Chuck Spring Screw (INCLUDES HARDWARE)	1
2	44L627AH	Lower Chuck Slide Shield - Top	1
3	371L616-2AH	Lower Chuck Shim .002 Thick	2
	371L616-5AH	Lower Chuck Shim .005 Thick	2
	371L616-10AH	Lower Chuck Shim .010 Thick	2
	371L616-30AH	Lower Chuck Shim .030 Thick	2
4	71L627AH	Lower Chuck Mandrel - Top	1
5	**41L817AH	Internal Retaining Ring - Nickel Plated	1
6	116L816AH	Matched Pair Ball Bearing	2
7	137L815AH	#143 O-Ring - Encapsulated	2
8	4P116AH	Bearing Lockwasher	1
9	82L627AH	Lower Chuck Slide - Top (INCLUDES HARDWARE)	1
9.1	32L847AH	Key (INCLUDES HARDWARE)	1
10	21L816AH	Lower Chuck Spring Washer	1
11	9L840AH	Lower Chuck Spring 1184 LBS	1

ITEM NO.	PART NO.	DESCRIPTION	QTY
12	9L826AH	Mandrel Screw	1
13	156L623AH	Lower Chuck Gear 22T 8P - Steam	1
14	47L627AH	Lower Chuck Mandrel - Bottom (INCLUDES HARDWARE)	1
14.1	56L828AH	Dowel Pin .1875 X .2500	1
15	4P517AH	Beveled Retaining Ring	1
16	28P516AH	Bearing	1
17	**78L641AH	Retainer	1
18	**29L826AH	Vented Screw with Nylok Patch	1
19	69L627AH	Lower Chuck Slide Bearing (INCLUDES HARDWARE)	1
20	73L627AH	Lower Chuck Slide - Bottom - Steam (INCLUDES HARDWARE)	1
21	15L629AH	Lower Chuck Roll Pin (INCLUDES HARDWARE)	1
	136L614AH (NOT SHOWN)	Indicator Port	1
22	601P629AH	Cam Roll	1
23	50L627AH	Lower Chuck Slide Block - Bottom	1
24	93L816AH	Lower Chuck Cam Roll Washer	1
25	3P229AH	Lower Chuck Cam Roll	1
26	141L614AH	Grease Block (INCLUDES HARDWARE)	1
26.1	135L614AH	Block Gasket	1

**\*\*Sold in increments of 12.**

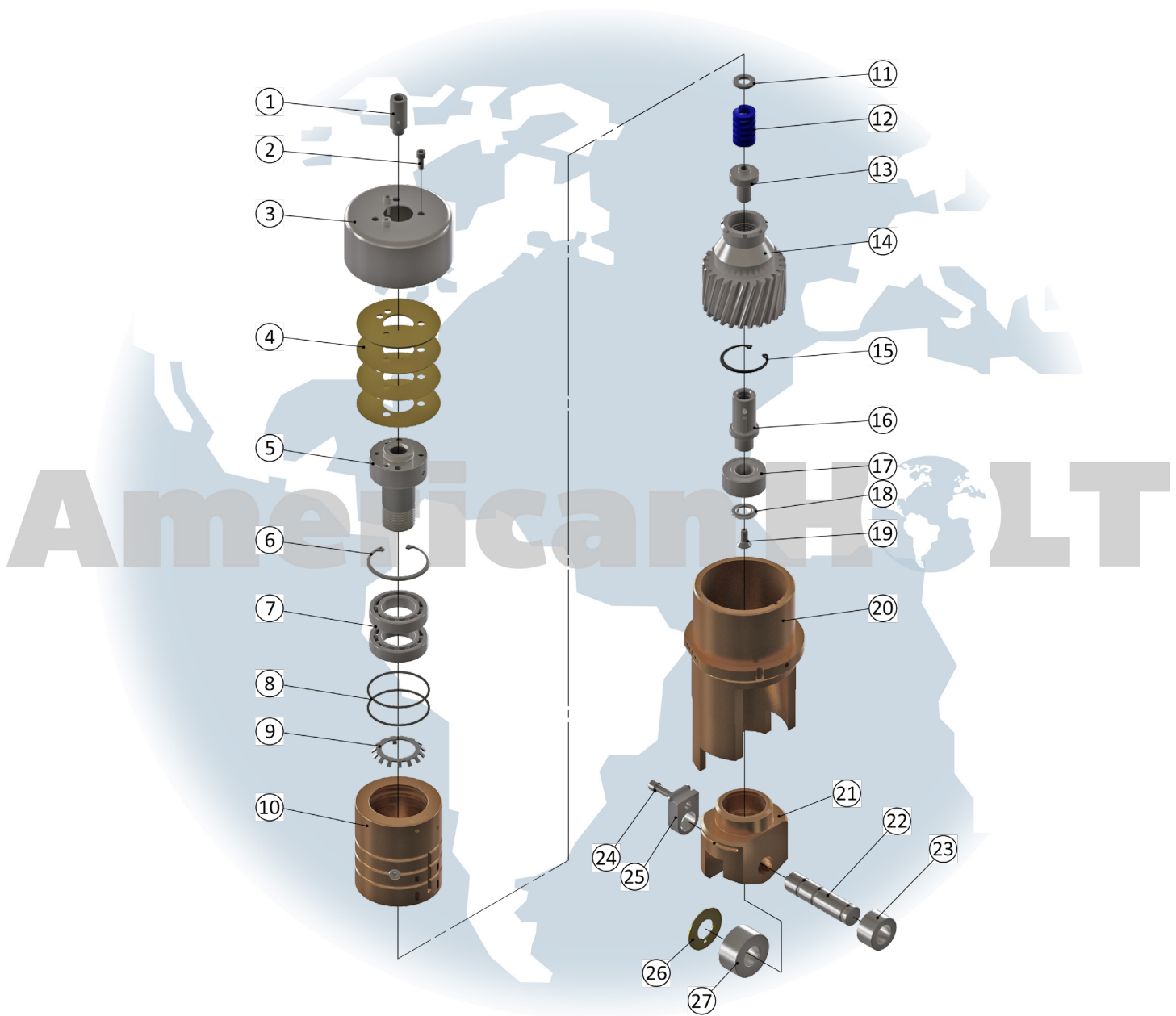
\* - Item made-to-order    N/A - Item is not currently offered by American Holt

**FOR MORE INFORMATION, CONTACT AMERICAN HOLT AT:**  
781-440-9993 • sales@americanholt.com • www.americanholt.com

# 60L Seamer

AFTER MARKET PARTS FOR:

## 14L600-ATMOSAH LOWER DRIVEN LIFTER ASSEMBLY, ATMOSPHERE



**NOTICE:** All parts offered by American Holt are manufactured by or for American Holt and not by or for the Original Equipment Manufacturer. Part numbers shown that are those of the Original Equipment Manufacturer, if any, are used for reference purposes only. American Holt is an independent supplier of quality replacement parts having no affiliation with any Original Equipment Manufacturer. All prices are subject to change without notice. Copyright ©2019 American Holt Corp. All rights reserved.



IN-STOCK AND READY TO SHIP.

## 14L600-ATMOSAH LOWER DRIVEN LIFTER ASSEMBLY, ATMOSPHERE

ITEM NO.	PART NO.	DESCRIPTION	QTY
1	8L826AH	Lower Chuck Spring Screw (INCLUDES HARDWARE)	6
2	ZZ-SHCS-SS-0.25-20X0.625-NYL	Socket Head Cap Screw, 18-8 SS, 1/4-20X5/8 with Nylon Patch	18
3	44L627AH	Lower Chuck Slide Shield - Top	6
4	37L616-2AH	Lower Chuck Shim .002 Thick	18
	37L616-5AH	Lower Chuck Shim .005 Thick	18
	37L616-10AH	Lower Chuck Shim .010 Thick	18
	37L616-30AH	Lower Chuck Shim .030 Thick	18
5	71L627AH	Lower Chuck Mandrel - Top	6
6	**41L817AH	Snap Ring - Nickel Plated	6
7	116L816AH	Ball Bearing Pair	6
8	137L815AH	#143 O-Ring - Encapsulated	12
9	4P116AH	Bearing Lockwasher	6
10	82L627AH	Lower Chuck Slide - Top (INCLUDES HARDWARE)	6
10.1	32L847AH	Key (INCLUDES HARDWARE)	6
11	21L816AH	Lower Chuck Spring Washer	6
12	9L840AH	Lower Chuck Spring	6
13	9L826AH	Lower Chuck Bottom Mandrel Screw	6
14	155L623AH	Lower Chuck Gear 25T - Atmosphere	6
15	4P517AH	Snap Ring - Beveled	6
16	47L627AH	Lower Chuck Mandrel - Bottom (INCLUDES HARDWARE)	6
17	28P516AH	Ball Bearing	6
18	**78L641AH	Seaming Roll Retainer	6
19	**29L826AH	Seaming Roll Retainer Screw	6
20	69L627AH	Lower Chuck Slide Bearing (INCLUDES HARDWARE)	6
21	72L627AH	Lower Chuck Slide Bottom - Atmosphere	6
22	15L629AH	Lower Chuck Roll Pin (INCLUDES HARDWARE)	6
23	601P629AH	Lower Chuck Return Cam Roll	6
24	ZZ-SHCS-SS-0.312-18X0.75-NYL	Socket Head Cap Screw, 18-8 SS, 5/16-18X3/4	6
25	50L627AH	Lower Chuck Slide Block - Bottom	6
26	93L816AH	Washer	6
27	3P229AH	Lower Chuck Cam Roll	6

\* - Item made-to-order    N/A - Item is not currently offered by American Holt

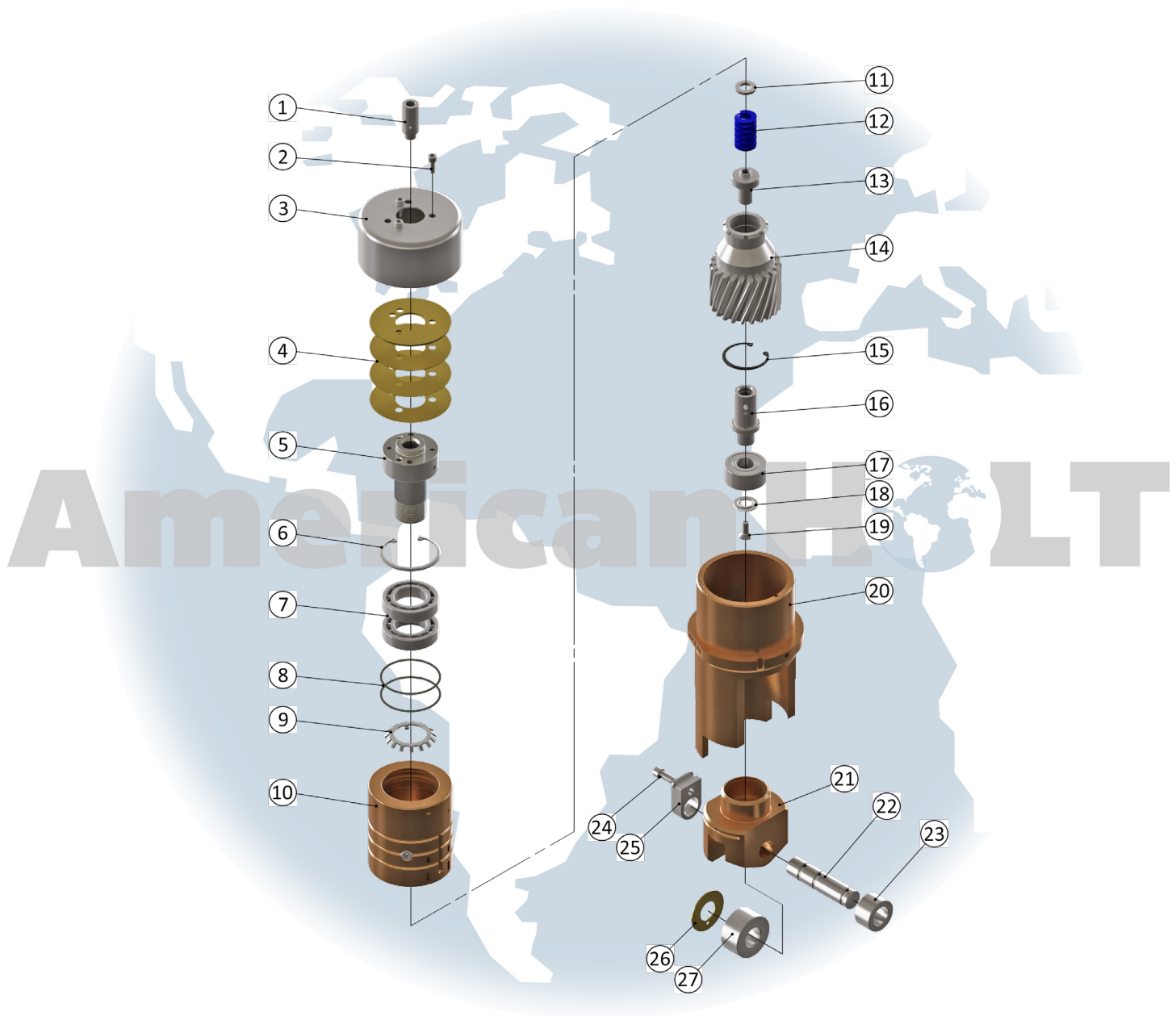
\*\*Sold in increments of 12.

**FOR MORE INFORMATION, CONTACT AMERICAN HOLT AT:**  
781-440-9993 • sales@americanholt.com • www.americanholt.com

# 60L Seamer

AFTER MARKET PARTS FOR:

## 14L600-ATMOSAH LOWER DRIVEN LIFTER ASSEMBLY, STEAM



**NOTICE:** All parts offered by American Holt are manufactured by or for American Holt and not by or for the Original Equipment Manufacturer. Part numbers shown that are those of the Original Equipment Manufacturer, if any, are used for reference purposes only. American Holt is an independent supplier of quality replacement parts having no affiliation with any Original Equipment Manufacturer. All prices are subject to change without notice. Copyright ©2019 American Holt Corp. All rights reserved.

IN-STOCK AND READY TO SHIP.

## 14L600-ATMOSAH LOWER DRIVEN LIFTER ASSEMBLY, STEAM

ITEM NO.	PART NO.	DESCRIPTION	QTY
1	8L826AH	Lower Chuck Spring Screw (INCLUDES HARDWARE)	6
2	ZZ-SHCS-SS-0.25-20X0.625-NYL	Socket Head Cap Screw, 18-8 SS, 1/4-20X5/8 with Nylon Patch	18
3	44L627AH	Lower Chuck Slide Shield - Top	6
4	371L616-2AH	Lower Chuck Shim .002 Thick	18
	37L616-5AH	Lower Chuck Shim .005 Thick	18
	37L616-10AH	Lower Chuck Shim .010 Thick	18
	37L616-30AH	Lower Chuck Shim .030 Thick	18
5	71L627AH	Lower Chuck Mandrel - Top	6
6	**41L817AH	Snap Ring - Nickel Plated	6
7	116L816AH	Ball Bearing Pair	6
8	137L815AH	#143 O-Ring - Encapsulated	12
9	4P116AH	Bearing Lockwasher	6
10	82L627AH	Lower Chuck Slide - Top (INCLUDES HARDWARE)	6
10.1	32L847AH	Key (INCLUDES HARDWARE)	6
11	21L816AH	Lower Chuck Spring Washer	6
12	9L840AH	Lower Chuck Spring	6
13	9L826AH	Lower Chuck Bottom Mandrel Screw	6
14	156L623AH	Lower Chuck Gear 22T - Steam	6
15	4P517AH	Snap Ring - Beveled	6
16	47L627AH	Lower Chuck Mandrel - Bottom (INCLUDES HARDWARE)	6
17	28P516AH	Ball Bearing	6
18	**78L641AH	Seaming Roll Retainer	6
19	**29L826AH	Seaming Roll Retainer Screw	6
20	69L627AH	Lower Chuck Slide Bearing (INCLUDES HARDWARE)	6
21	73L627AH	Lower Chuck Slide Bottom - Steam	6
22	15L629AH	Lower Chuck Roll Pin (INCLUDES HARDWARE)	6
23	601P629AH	Lower Chuck Return Cam Roll	6
24	ZZ-SHCS-SS-0.312-18X0.75-NYL	Socket Head Cap Screw, 18-8 SS, 5/16-18X3/4	6
25	50L627AH	Lower Chuck Slide Block - Bottom	6
26	93L816AH	Washer	6
27	3P229AH	Lower Chuck Cam Roll	6

\* - Item made-to-order    N/A - Item is not currently offered by American Holt

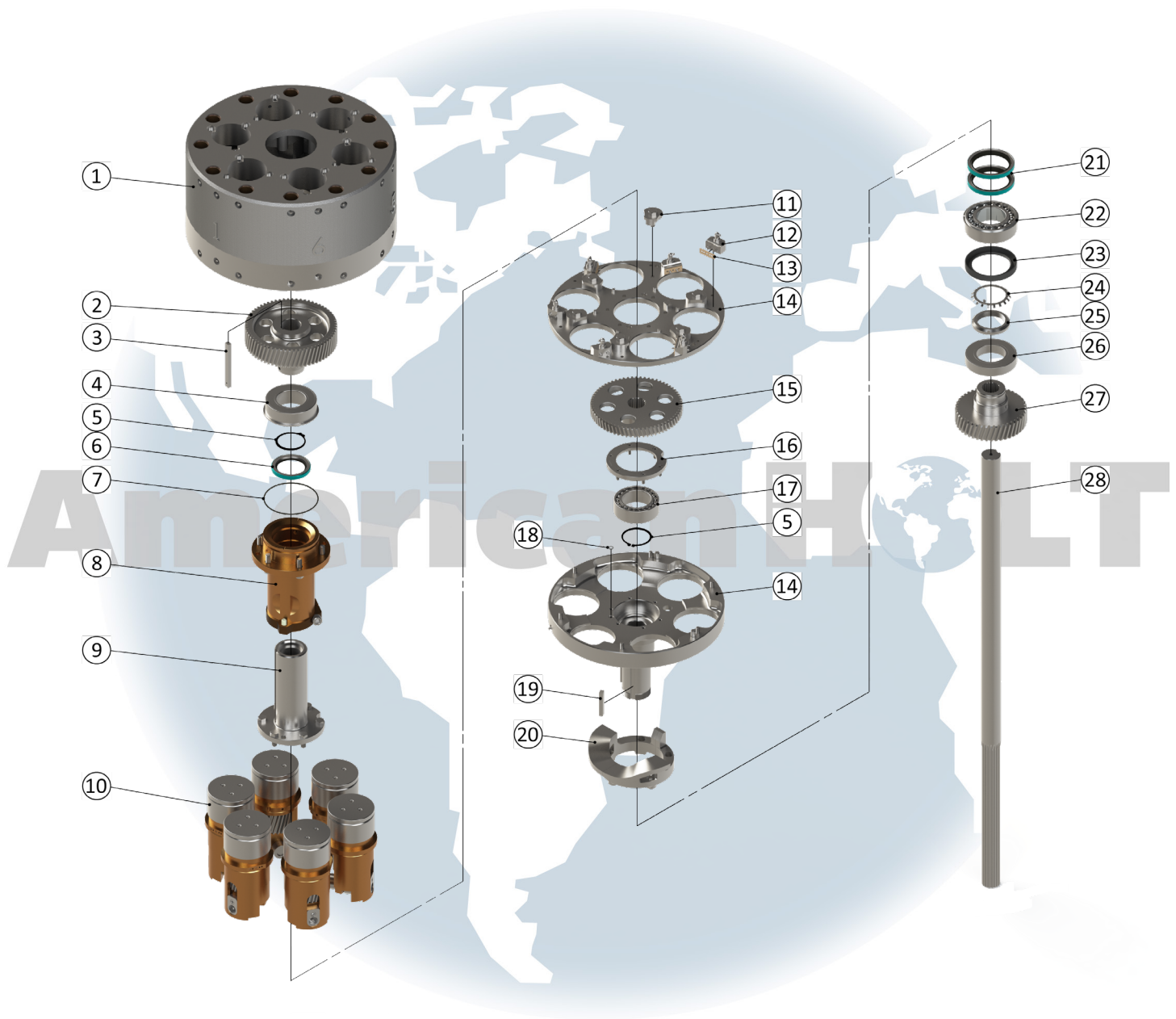
\*\*Sold in increments of 12.

**FOR MORE INFORMATION, CONTACT AMERICAN HOLT AT:**  
781-440-9993 • sales@americanholt.com • www.americanholt.com

# 60L Seamer

AFTER MARKET PARTS FOR:

## CSDLL-CONVERAH DRIVEN LIFTER CONVERSION KIT, ATMOSPHERE



**NOTICE:** All parts offered by American Holt are manufactured by or for American Holt and not by or for the Original Equipment Manufacturer. Part numbers shown that are those of the Original Equipment Manufacturer, if any, are used for reference purposes only. American Holt is an independent supplier of quality replacement parts having no affiliation with any Original Equipment Manufacturer. All prices are subject to change without notice. Copyright ©2019 American Holt Corp. All rights reserved.

IN-STOCK AND READY TO SHIP.

## CSDLL-CONVERAH DRIVEN LIFTER CONVERSION KIT, ATMOSPHERE

ITEM NO.	PART NO.	DESCRIPTION	QTY
1	1L641AH (NOT SOLD SEPARATELY)	Upper Seaming Turret (INCLUDES HARDWARE)	1
2	12L623AH	Seaming Spindle Drive Gear 66 Teeth - Atmosphere	1
3	1L647AH	Seaming Spindle Drive Gear Key	1
4	16L616AH	Ball Bearing	1
5	6L617AH	Retaining Ring	2
6	3L615AH	Oil Seal	1
7	20L615AH	#250 O-Ring	1
8	334L641AH (NOT SOLD SEPARATELY)	Upper Turret Drive Hub (INCLUDES HARDWARE)	1
8.1	3L647AH	Seaming Turret Drive Hub Key	1
9	475L644AH (NOT SOLD SEPARATELY)	Lower Turret Hollow Shaft (INCLUDES HARDWARE)	1
10	14L600-ATMOSAH	Lower Driven Lifter - Atmosphere	6
11	70L617AH	Lower Chuck Slide Bearing Clamp (INCLUDES HARDWARE)	6
12	141L614AH	Grease Block (INCLUDES HARDWARE)	6
13	135L614AH	Block Gasket	6
14	9L600AH (NOT SOLD SEPARATELY)	Lower Turret (INCLUDES HARDWARE)	1
14.1	78L627AH (NOT SOLD SEPARATELY)	Lower Turret Top	1
14.2	79L627AH (NOT SOLD SEPARATELY)	Lower Turret Bottom	1
15	147L623AH	Lower Chuck Drive Gear 66 Teeth - Atmosphere	1
16	66L617AH	Bearing Retainer (INCLUDES HARDWARE)	1
17	8H616AH	Ball Bearing	1
18	12S815AH	#012 O-Ring	1
19	8L647AH	Lower Turret Gear Key	2
20	67L620AH	Lower Chuck Return Cam - Atmosphere	1
21	9L615AH	Oil Seal	2
22	15L616AH	Ball Bearing	1
23	7L615AH	Oil Seal	1
24	22L616AH	Bearing Lockwasher	1
25	23L616AH	Bearing Locknut	1
26	26P216AH	Ball Bearing	1
27	148L623AH	Intermediate Drive Pinion (INCLUDES HARDWARE)	1
28	474L644AH	Shaft	1

\* - Item made-to-order    N/A - Item is not currently offered by American Holt

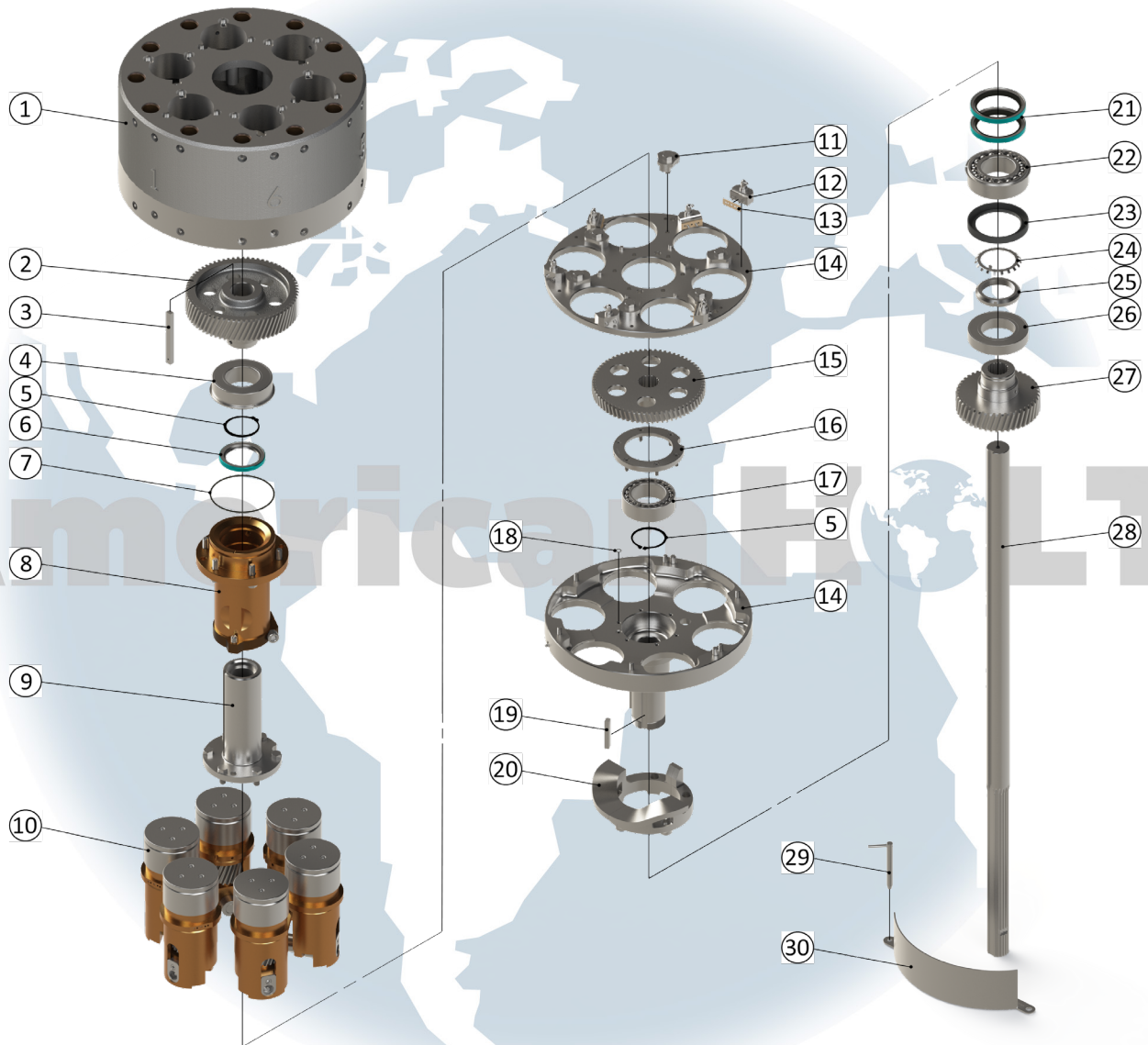
**FOR MORE INFORMATION, CONTACT AMERICAN HOLT AT:**  
781-440-9993 • sales@americanholt.com • www.americanholt.com



# 60L Seamer

AFTER MARKET PARTS FOR:

## SVDLL-CONVERAH DRIVEN LIFTER CONVERSION KIT, STEAM/VACUUM



**NOTICE:** All parts offered by American Holt are manufactured by or for American Holt and not by or for the Original Equipment Manufacturer. Part numbers shown that are those of the Original Equipment Manufacturer, if any, are used for reference purposes only. American Holt is an independent supplier of quality replacement parts having no affiliation with any Original Equipment Manufacturer. All prices are subject to change without notice. Copyright ©2019 American Holt Corp. All rights reserved.

IN-STOCK AND READY TO SHIP.

\* Item made-to-order

## SVDLL-CONVERAH DRIVEN LIFTERCONVERSION KIT, STEAM/VACUUM

ITEM NO.	PART NO.	DESCRIPTION	QTY
1	1L641AH (NOT SOLD SEPARATELY)	Upper Seaming Turret (INCLUDES HARDWARE)	1
2	55L623AH	Seaming Spindle Drive Gear 69 Teeth - Steam	1
3	1L647AH	Seaming Spindle Drive Gear Key	1
4	16L616AH	Ball Bearing	1
5	6L617AH	Retaining Ring	2
6	3L615AH	Oil Seal	1
7	20L615AH	#250 O-Ring	2
8	334L641AH (NOT SOLD SEPARATELY)	Upper Turret Drive Hub (INCLUDES HARDWARE)	1
8.1	3L647AH	Seaming Turret Drive Hub Key	1
9	475L644AH (NOT SOLD SEPARATELY)	Lower Turret Hollow Shaft (INCLUDES HARDWARE)	1
10	14L600-STEAMAH	Lower Driven Lifter - Steam	1
11	70L617AH	Lower Chuck Slide Bearing Clamp (INCLUDES HARDWARE)	1
12	141L614AH	Grease Block (INCLUDES HARDWARE)	1
13	135L614AH	Block Gasket	1
14	9L600AH (NOT SOLD SEPARATELY)	Lower Turret (INCLUDES HARDWARE)	1

ITEM NO.	PART NO.	DESCRIPTION	QTY
14.1	78L627AH (NOT SOLD SEPARATELY)	Lower Turret Top	1
14.2	79L627AH (NOT SOLD SEPARATELY)	Lower Turret Bottom	1
15	150L623AH	Lower Chuck Drive Gear 69 Teeth - Steam	1
16	66L617AH	Bearing Retainer (INCLUDES HARDWARE)	1
17	8H616AH	Ball Bearing	1
18	12S815AH	#012 O-Ring	1
19	8L647AH	Lower Turret Gear Key	2
20	68L620AH	Lower Chuck Return Cam - Steam	1
21	9L615AH	Oil Seal	2
22	15L616AH	Ball Bearing	1
23	7L615AH	Oil Seal	1
24	22L616AH	Bearing Lockwasher	1
25	23L616AH	Bearing Locknut	1
26	26P216AH	Ball Bearing	1
27	148L623AH	Intermediate Drive Pinion (INCLUDES HARDWARE)	1
28	474L644AH	Shaft	1
29	6L628AH	Lower Turret Guard Pin	1
30	829L654AH	Lower Turret Guard Extension	1

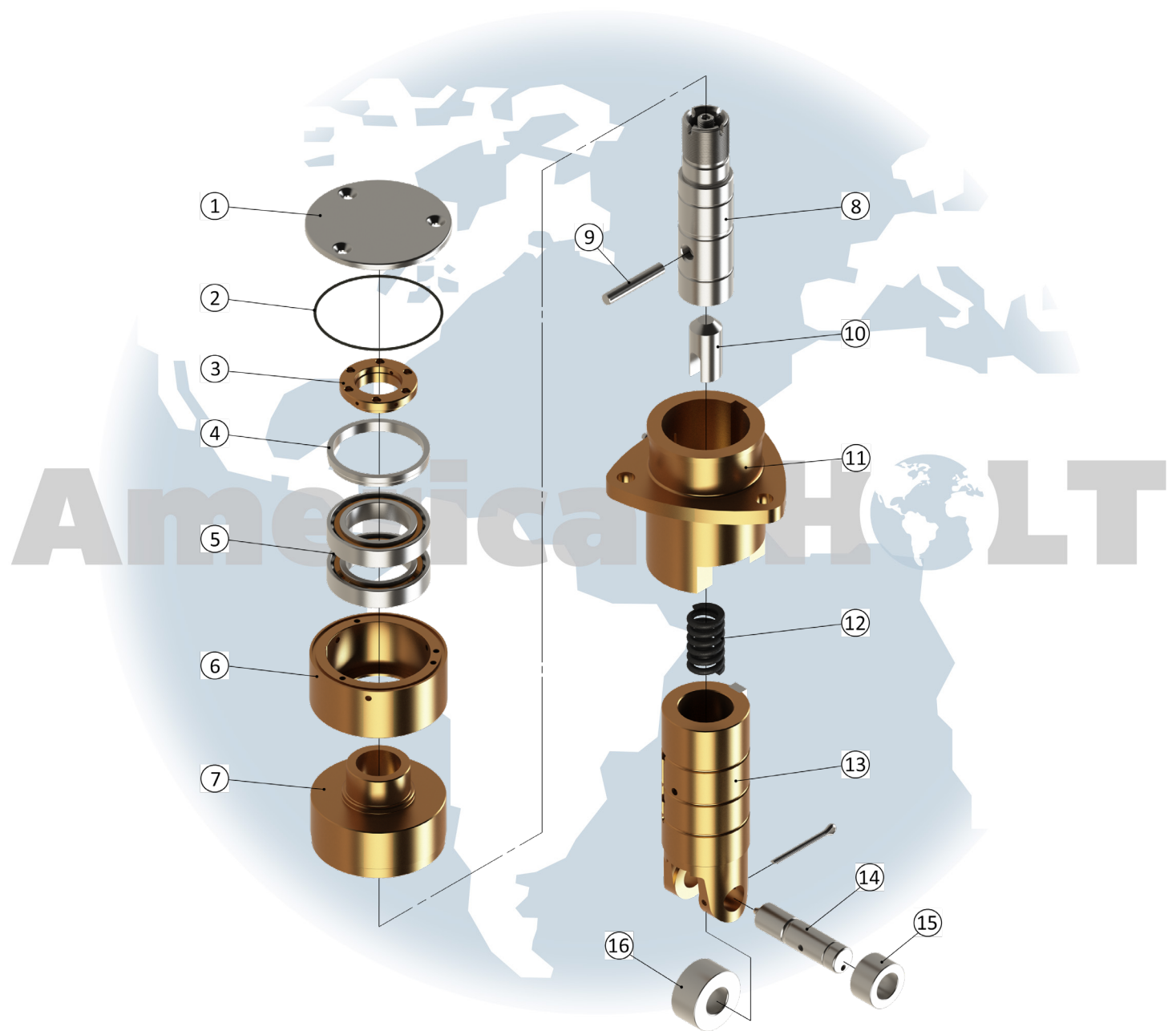
\* - Item made-to-order    N/A - Item is not currently offered by American Holt

**FOR MORE INFORMATION, CONTACT AMERICAN HOLT AT:**  
781-440-9993 • sales@americanholt.com • www.americanholt.com

# 60L Seamer

AFTER MARKET PARTS FOR:

## 60L-LCSAAH NON DRIVEN LOWER LIFTER ASSEMBLY



**NOTICE:** All parts offered by American Holt are manufactured by or for American Holt and not by or for the Original Equipment Manufacturer. Part numbers shown that are those of the Original Equipment Manufacturer, if any, are used for reference purposes only. American Holt is an independent supplier of quality replacement parts having no affiliation with any Original Equipment Manufacturer. All prices are subject to change without notice. Copyright ©2019 American Holt Corp. All rights reserved.

IN-STOCK AND READY TO SHIP.

\* Item made-to-order

## 60L-LCSAAH NON DRIVEN LOWER LIFTER ASSEMBLY

ITEM NO.	PART NO.	DESCRIPTION	QTY
1	9L627AH	Lifter Plate	1
2	15L415AH	#154 O-Ring	1
3	6L627AH	Locknut	1
4	20L653AH	Bearing Holder Spacer	1
5	24L616AH	Thrust Bearing Pair	1
6	27L627AH	Lower Chuck Bearing Holder (INCLUDES HARDWARE)	1
7	5L627AH	Lower Chuck Bearing Cap	1
8	3L627AH	Lower Chuck Mandrel Assembly	1
8.1	51L626AH	Lower Lifter Screw	1
8.2	7P228AH	Slotted Nut	1
9	23P228AH	Lower Chuck Locking Pin	1
10	10L627AH	Spring Plunger	1
11	2L627AH	Lower Chuck Slide Bearing (INCLUDES HARDWARE)	1
12	1P540AH	Lower Chuck Spring - 1000 lbs	1
	31L640AH	Lower Chuck Spring - 864 lbs	
13	6P206AH	Lower Chuck Slide Assembly (INCLUDES HARDWARE)	1
13.1	1P210AH	Lower Chuck Slide Key	1
14	4L629AH	Cam Roll Pin (INCLUDES HARDWARE)	1
15	601P629AH	Cam Roll	1
16	3P229AH	Lower Chuck Cam Roll	1

\* - Item made-to-order    N/A - Item is not currently offered by American Holt

**FOR MORE INFORMATION, CONTACT AMERICAN HOLT AT:**  
781-440-9993 • sales@americanholt.com • www.americanholt.com

# 60L Seamer

AFTER MARKET PARTS FOR:

## SEAMING SPINDLE



**NOTICE:** All parts offered by American Holt are manufactured by or for American Holt and not by or for the Original Equipment Manufacturer. Part numbers shown that are those of the Original Equipment Manufacturer, if any, are used for reference purposes only. American Holt is an independent supplier of quality replacement parts having no affiliation with any Original Equipment Manufacturer. All prices are subject to change without notice. Copyright ©2019 American Holt Corp. All rights reserved.

IN-STOCK AND READY TO SHIP.

\* Item made-to-order

## SEAMING SPINDLE

ITEM NO.	PART NO.	DESCRIPTION	QTY
1	8L616AH	Ball Bearing	6
2	31L617AH	Seaming Spindle Upper Bearing Retainer - Steam (INCLUDES HARDWARE)	6
3	2L616AH	Ball Thrust Bearing	6
4	2L653AH	Knockout Rod Spring Collar	12
5	1L640AH-MODAH	Knockout Rod Spring	6
6	12L600AH	Seaming Spindle Assembly - Steam	6
	11L600AH	Seaming Spindle Assembly - Atmosphere	6
6.1	345L644AH	Seaming Lever Spindle 22T - Steam	6
	337L644AH	Seaming Lever Spindle 25T - Atmosphere	6
6.2	6L616AH	Tapered Roller Bearing Pair (INCLUDES HARDWARE)	6
6.3	102L616AH	Ball Bearing Pair	6
6.4	283L616AH	Seaming Spindle Lower Bearing Washer	6
6.5	35L617AH	Retaining Ring	6
7	284L616AH	Seaming Spindle Sleeve Washer	6
8	52L816-3AH	Seaming Spindle Shim - 0.003 Thick	18
	52L816-5AH	Seaming Spindle Shim - 0.005 Thick	18
	52L816-10AH	Seaming Spindle Shim - 0.010 Thick	12
9	211L653AH	Seaming Spindle Seal Sleeve	6
10	2L615AH	Oil Seal	6
11	11L617AH	Seaming Spindle Lower Retainer	6

\* - Item made-to-order    N/A - Item is not currently offered by American Holt

**FOR MORE INFORMATION, CONTACT AMERICAN HOLT AT:**  
781-440-9993 • sales@americanholt.com • www.americanholt.com



# 60L Seamer

AFTER MARKET PARTS FOR:

## SEAMING LEVER - 1st OPERATION



**NOTICE:** All parts offered by American Holt are manufactured by or for American Holt and not by or for the Original Equipment Manufacturer. Part numbers shown that are those of the Original Equipment Manufacturer, if any, are used for reference purposes only. American Holt is an independent supplier of quality replacement parts having no affiliation with any Original Equipment Manufacturer. All prices are subject to change without notice. Copyright ©2019 American Holt Corp. All rights reserved.

IN-STOCK AND READY TO SHIP.

\* Item made-to-order

## SEAMING LEVER - 1st OPERATION

ITEM NO.	PART NO.	DESCRIPTION	QTY
1	59L616AH	Flexloc Nut	6
2	3L629AH	Seaming Cam Roll	6
3	2L641AH	Seaming Cam Lever	6
4	23L640AH	Seaming Cam Lever Spring	6
5	2L617AH	Retaining Ring - Stainless Steel	12
6	1L629AH	Seaming Cam Roll Pin - 1st Operation (INCLUDES HARDWARE)	6
7	4L641AH	Seaming Adjustment Lever (INCLUDES HARDWARE)	6
8	1L626AH	Seaming Adjustment Screw	6
9	29L616AH	Seaming Lever Shaft Washer	6
10	3L644AH	Seaming Lever Shaft (INCLUDES HARDWARE)	6
10.1	15L617AH	Shaft Ring	6
11	152L616AH	Seaming Lever Shaft Lower Washer	6
12	83L641AH	Roll Lever Assembly (INCLUDES HARDWARE)	6
12.1	44L626AH	Lever Screw	6
12.2	65L614AH	Seaming Lever Plug	6
13	81L641AH	Seaming Roll Pin	6
13.1	**29L826AH	Vented Screw with Nylok Patch (Sold in increments of 12)	6
14	212L616AH	Seaming Roll Upper Shield	6
15	28L615AH	Oil Seal	6
16	**78L641AH	Retainer (Sold in increments of 12)	6
17	198L616AH	Seaming Roll Bottom Closure	6
18	**48L617AH	Retaining Ring (Sold in increments of 6)	6

**\*\*Sold in increments of 12.**

\* - Item made-to-order    N/A - Item is not currently offered by American Holt

**FOR MORE INFORMATION, CONTACT AMERICAN HOLT AT:**  
781-440-9993 • sales@americanholt.com • www.americanholt.com

# 60L Seamer

AFTER MARKET PARTS FOR:

## SEAMING LEVER - 2nd OPERATION



**NOTICE:** All parts offered by American Holt are manufactured by or for American Holt and not by or for the Original Equipment Manufacturer. Part numbers shown that are those of the Original Equipment Manufacturer, if any, are used for reference purposes only. American Holt is an independent supplier of quality replacement parts having no affiliation with any Original Equipment Manufacturer. All prices are subject to change without notice. Copyright ©2019 American Holt Corp. All rights reserved.

IN-STOCK AND READY TO SHIP.

## SEAMING LEVER - 2nd OPERATION

ITEM NO.	PART NO.	DESCRIPTION	QTY
1	59L616AH	Flexloc Nut	6
2	3L641AH	Seaming Cam Lever	6
3	2L629AH	Seaming Cam Roll Pin - 2nd Operation (INCLUDES HARDWARE)	6
4	2L617AH	Retaining Ring - Stainless Steel	6
5	3L629AH	Seaming Cam Roll	6
6	4L641AH	Seaming Adjustment Lever (INCLUDES HARDWARE)	6
7	1L626AH	Seaming Adjustment Screw	6
8	29L616AH	Seaming Lever Shaft Washer	6
9	3L644AH	Seaming Lever Shaft (INCLUDES HARDWARE)	6
9.1	15L617AH	Shaft Ring	6
10	152L616AH	Seaming Lever Shaft Lower Washer	6
11	83L641AH	Roll Lever Assembly (INCLUDES HARDWARE)	6
11.1	44L626AH	Lever Screw	6
11.2	65L614AH	Seaming Lever Plug	6
12	81L641AH	Seaming Roll Pin	6
12.1	**29L826AH	Vented Screw with Nylok Patch (Sold in increments of 12)	6
13	212L616AH	Seaming Roll Upper Shield	6
14	28L615AH	Oil Seal	6
15	**78L641AH	Retainer (Sold in increments of 12)	6
16	198L616AH	Seaming Roll Bottom Closure	6
17	***48L617AH	Retaining Ring (Sold in increments of 6)	6

**\*\*Sold in increments of 12.**

**\*\*\* Sold in increments of 6**

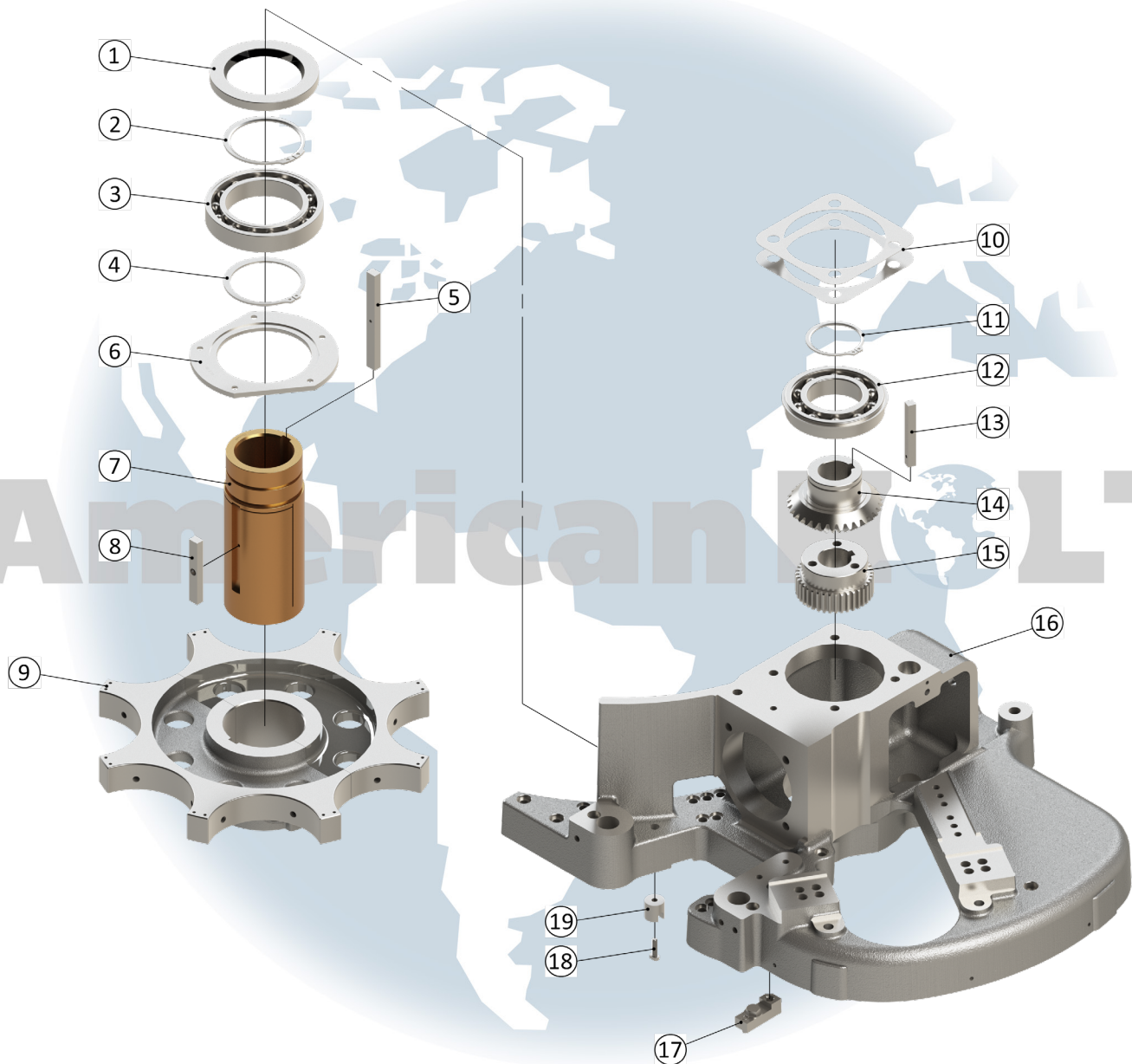
\* - Item made-to-order    N/A - Item is not currently offered by American Holt

**FOR MORE INFORMATION, CONTACT AMERICAN HOLT AT:**  
781-440-9993 • sales@americanholt.com • www.americanholt.com

# 60L Seamer

AFTER MARKET PARTS FOR:

## CAP FEED



**NOTICE:** All parts offered by American Holt are manufactured by or for American Holt and not by or for the Original Equipment Manufacturer. Part numbers shown that are those of the Original Equipment Manufacturer, if any, are used for reference purposes only. American Holt is an independent supplier of quality replacement parts having no affiliation with any Original Equipment Manufacturer. All prices are subject to change without notice. Copyright ©2019 American Holt Corp. All rights reserved.

IN-STOCK AND READY TO SHIP.

## CAP FEED

ITEM NO.	PART NO.	DESCRIPTION	QTY
1	6L615AH	Oil Seal	1
2	8L617AH	Retaining Ring - Nickel Plated	1
3	17L616AH	Ball Bearing	1
4	7L617AH	Retaining Ring - Nickel Plated	1
5	13L647AH	Cap Feed Turret Hollow Shaft Key	1
6	23L617AH	Cap Feed Turret Bearing Retainer	1
7	21L644AH	Drive Cap Feed Turret Hollow Shaft	1
8	19L647AH	Cap Feed Hollow Drive Shaft Key	1
9	1L670AH	Cap Feed Turret Hub - Atmosphere (INCLUDES HARDWARE)	1
10	117L616-010AH	Support Bracket Shim - .010 Thick	1
	117L616-020AH	Support Bracket Shim - .020 Thick	1
N/A	16L643AH	Cap Feed Bracket Support	1
11	5L617AH	Retaining Ring	1
12	12L616AH	Ball Bearing	1
13	20L647AH	Separator Drive Gear Key	1
14	3L623AH	Marker Drive Miter Gear	1
15	22L623AH	Separator Drive Gear	1
16	692L643AH	Cap Feed Bracket	1
N/A	16L653AH	Cap Feed Bracket Steady Spacer	1
17	322L653AH	Rail Holder (INCLUDES HARDWARE)	1
18	24L626AH	Cap Feed Drag Magnet Screw (INCLUDES HARDWARE)	1
19	14L633AH	Cap Feed Drag Magnet	1
N/A	14L656AH	Cap Feed Drag Magnet Holder	1
N/A	18L656AH	Cap Pusher Safety Stripper	1
N/A	18L833AH	Sealing Fitting	1
N/A	901L833AH	Cable -3 Cond. 18AWG OLFLEX	36

\* - Item made-to-order    N/A - Item is not currently offered by American Holt

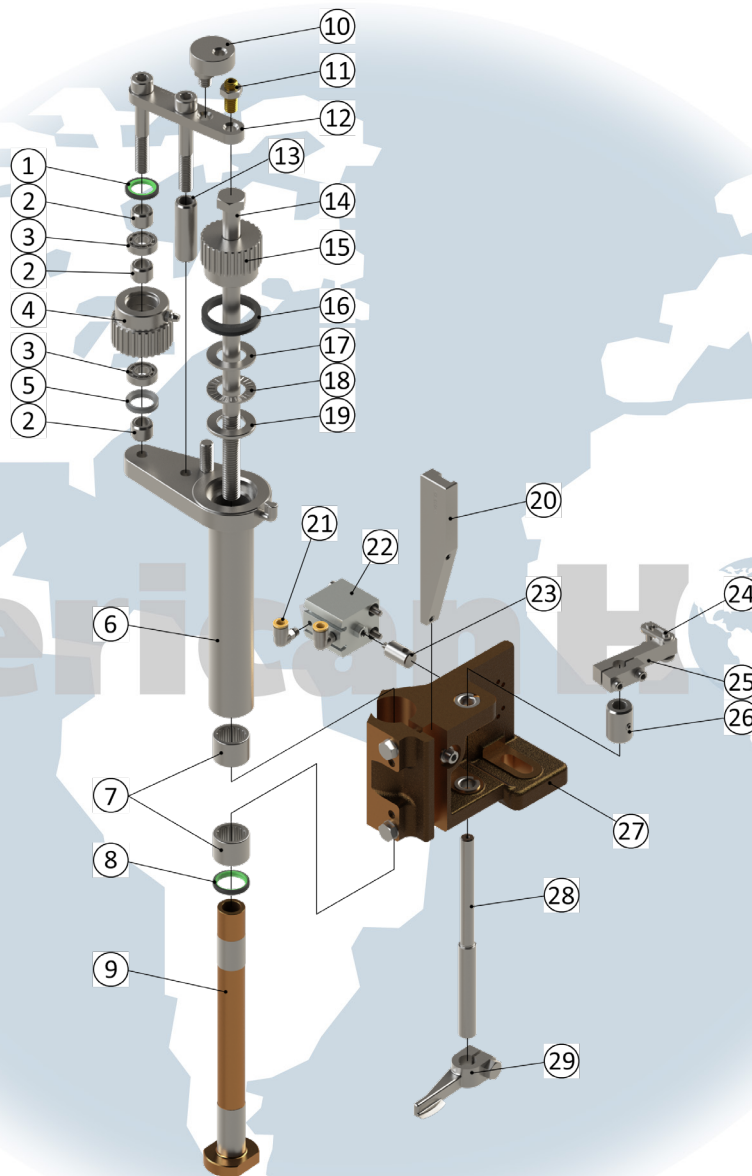
**FOR MORE INFORMATION, CONTACT AMERICAN HOLT AT:**  
781-440-9993 • sales@americanholt.com • www.americanholt.com



# 60L Seamer

AFTER MARKET PARTS FOR:

## CAP FEED SINGLE SEPARATOR 60L-SINGLESEPARATORAH



**NOTICE:** All parts offered by American Holt are manufactured by or for American Holt and not by or for the Original Equipment Manufacturer. Part numbers shown that are those of the Original Equipment Manufacturer, if any, are used for reference purposes only. American Holt is an independent supplier of quality replacement parts having no affiliation with any Original Equipment Manufacturer. All prices are subject to change without notice. Copyright ©2019 American Holt Corp. All rights reserved.

IN-STOCK AND READY TO SHIP.

\* Item made-to-order

## CAP FEED SINGLE SEPARATOR 60L-SINGLESEPARATORAH

ITEM NO.	PART NO.	DESCRIPTION	QTY
1	44L615AH	Oil Seal	1
2	284L653AH	Spacer	3
3	344L616AH	Ball Bearing	2
4	110L630AH	Idler Pulley (INCLUDES HARDWARE)	1
5	41L615AH	Axial Seal	1
6	672L643AH	Separator Spindle Housing (INCLUDES HARDWARE)	1
7	346L616AH	Needle Bearing	2
8	43L615AH	Oil Seal	1
9	168L656AH	Separator Spindle	1
10	776L654AH	Guard Post (INCLUDES HARDWARE)	1
11	85L626AH	Modified Set Screw (INCLUDES HARDWARE)	1
12	675L643AH	Bracket (INCLUDES HARDWARE)	1
13	285L653AH	Spacer 10MM X 16MM X 48MM	1
14	86L626AH	Hex Head Bolt	1
15	108L630AH	Separator Pulley (INCLUDES HARDWARE)	1
16	42L615AH	Axial Seal	1
17	349L616AH	Housing Washer	1
18	347L616AH	Needle Thrust Bearing	1
19	348L616AH	Shaft Washer	1
20	169L656AH	Guide Holder - 15 Degree	1
21	307L639AH	Hose Connector - 1/4" Push-In-Tube	2
22	305L639AH	Air Cylinder (INCLUDES HARDWARE)	1
23	54L682AH	Rod End (INCLUDES HARDWARE)	1
24	94L624AH	Chain Link	1
25	45L682AH	Lever Link (INCLUDES HARDWARE)	1
26	286L653AH	Spacer (INCLUDES HARDWARE)	1
27	671L643AH	Separator Bracket (INCLUDES HARDWARE)	1
27.1	350L616AH	Bushing	3
28	64L628AH	Pivot Pin - NC NC Finger	1
29	1L482AH	NC NC Finger (INCLUDES HARDWARE)	1

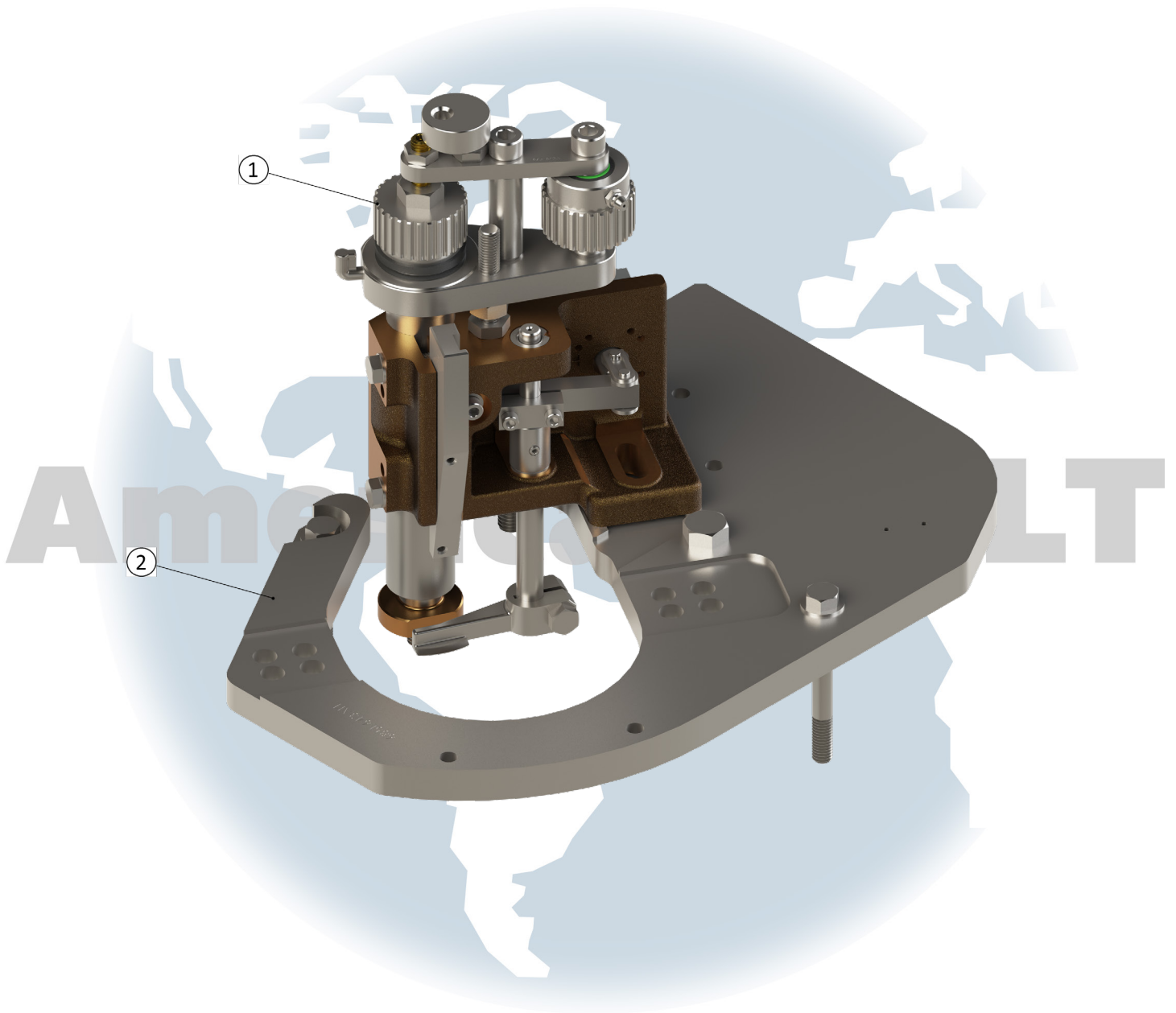
\* - Item made-to-order    N/A - Item is not currently offered by American Holt

**FOR MORE INFORMATION, CONTACT AMERICAN HOLT AT:**  
781-440-9993 • sales@americanholt.com • www.americanholt.com

# 60L Seamer

AFTER MARKET PARTS FOR:

## COVER FEED PART 1



**NOTICE:** All parts offered by American Holt are manufactured by or for American Holt and not by or for the Original Equipment Manufacturer. Part numbers shown that are those of the Original Equipment Manufacturer, if any, are used for reference purposes only. American Holt is an independent supplier of quality replacement parts having no affiliation with any Original Equipment Manufacturer. All prices are subject to change without notice. Copyright ©2019 American Holt Corp. All rights reserved.

IN-STOCK AND READY TO SHIP.

## COVER FEED PART 1

ITEM NO.	PART NO.	DESCRIPTION	QTY
1	60L-SINGLESEPARATORAH	Single Separator Assembly	1
2	685L643AH	Base Plate (INCLUDES HARDWARE)	1
	33H614AH (NOT SHOWN)	Tubing - 25ft Roll	1
N/A	107P616AH	Spacer	1
N/A	287L653AH	Spacer	1
N/A	288L653AH	Rail Holder	1
N/A	774L646AH	Front Guard	1
N/A	775L654AH	Rear Guard	1

\* - Item made-to-order    N/A - Item is not currently offered by American Holt

**FOR MORE INFORMATION, CONTACT AMERICAN HOLT AT:**  
781-440-9993 • sales@americanholt.com • www.americanholt.com

# 60L Seamer

AFTER MARKET PARTS FOR:

## COVER FEED PART 2



**NOTICE:** All parts offered by American Holt are manufactured by or for American Holt and not by or for the Original Equipment Manufacturer. Part numbers shown that are those of the Original Equipment Manufacturer, if any, are used for reference purposes only. American Holt is an independent supplier of quality replacement parts having no affiliation with any Original Equipment Manufacturer. All prices are subject to change without notice. Copyright ©2019 American Holt Corp. All rights reserved.

IN-STOCK AND READY TO SHIP.

\* Item made-to-order

## COVER FEED PART 2

ITEM NO.	PART NO.	DESCRIPTION	QTY
1	460L644AH	Drive Shaft	1
2	283L653AH	Shaft Collar (INCLUDES HARDWARE)	1
3	107L630AH	Timing Belt	1
4	109L630AH	Drive Pulley	1
5	41L615AH	Axial Seal V-16	1
6	63L617AH	Upper Bearing Holder	1
6.1	38L647AH	Tolerance Ring - 40MM I.D.	1
6.2	39L647AH	Tolerance Ring - 1.000 O.D.	1
7	345L616AH	Ball Bearing	2
8	42L615AH	Axial Seal	2
9	290L653AH	NC NC Flag (INCLUDES HARWDARE)	1
10	145L623AH	Hub with Separator Driven Gear	1
10.1	23L623AH	Separator Driven Gear	1
11	62L617AH	Lower Bearing Holder	1
11.1	38L647AH	Tolerance Ring - 40MM I.D.	1
11.2	39L647AH	Tolerance Ring - 1.000 O.D.	1
12	33L417AH	Retaining Ring	1

\* - Item made-to-order    N/A - Item is not currently offered by American Holt

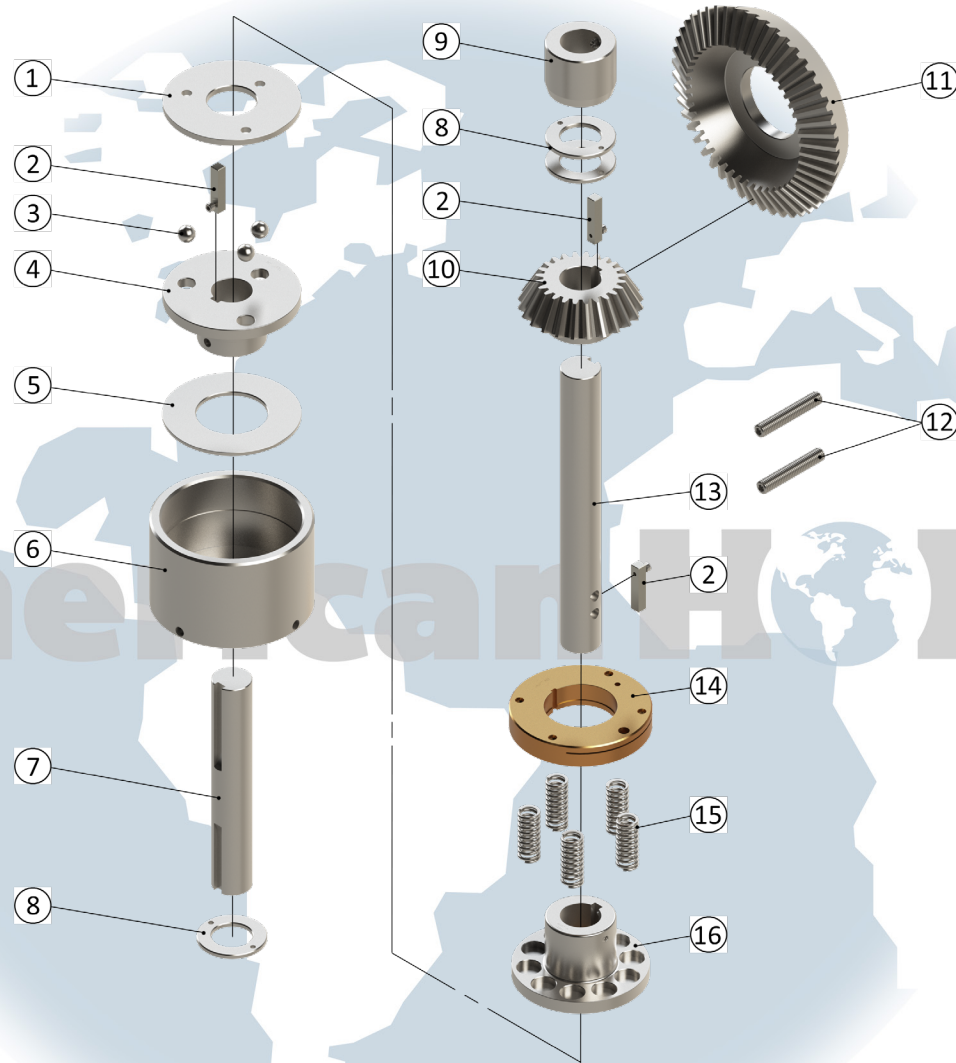
**FOR MORE INFORMATION, CONTACT AMERICAN HOLT AT:**  
781-440-9993 • sales@americanholt.com • www.americanholt.com



# 60L Seamer

AFTER MARKET PARTS FOR:

## FILLER DRIVE



**NOTICE:** All parts offered by American Holt are manufactured by or for American Holt and not by or for the Original Equipment Manufacturer. Part numbers shown that are those of the Original Equipment Manufacturer, if any, are used for reference purposes only. American Holt is an independent supplier of quality replacement parts having no affiliation with any Original Equipment Manufacturer. All prices are subject to change without notice. Copyright ©2019 American Holt Corp. All rights reserved.

IN-STOCK AND READY TO SHIP.

\* Item made-to-order

## FILLER DRIVE

ITEM NO.	PART NO.	DESCRIPTION	QTY
1	5L697AH	Filler Drive Clutch Spring Hub Plate	1
2	22L647AH	Filler Drive Key (INCLUDES HARDWARE)	3
3	48L616AH	Steel Ball - Hardened	3
4	9L697AH	Filler Drive Clutch Ball Hub (INCLUDES HARDWARE)	1
4.1	36L616AH	Clutch Ball Bushing	3
5	8L697AH	Filler Drive Clutch Housing Plate	1
6	7L697AH	Filler Drive Clutch Housing	1
7	26L644AH	Filler Drive Shaft	1
8	22P216AH	Thrust Washer	3
9	18L653AH	Filler Drive Shaft Collar (INCLUDES HARDWARE)	1
10	29L623AH	Filler Drive Pinion (INCLUDES HARDWARE)	1
11	28L623AH	Filler Drive Gear	1
N/A	20L643AH	Filler Drive Bracket	1
12	51L626AH	Lower Chuck Spring Adjustment Screw	2
13	25L644AH	Filler Drive Intermediate Shaft	1
14	6L697AH	Filler Drive Clutch Spring Retainer	1
15	14L640AH	Filler Drive Clutch Spring	5
16	4L697AH	Filler Drive Clutch Spring Hub (INCLUDES HARDWARE)	1
16.1	314L616AH	Hub Bushing	1
N/A	549L654AH	Guard for Base Gearing	1

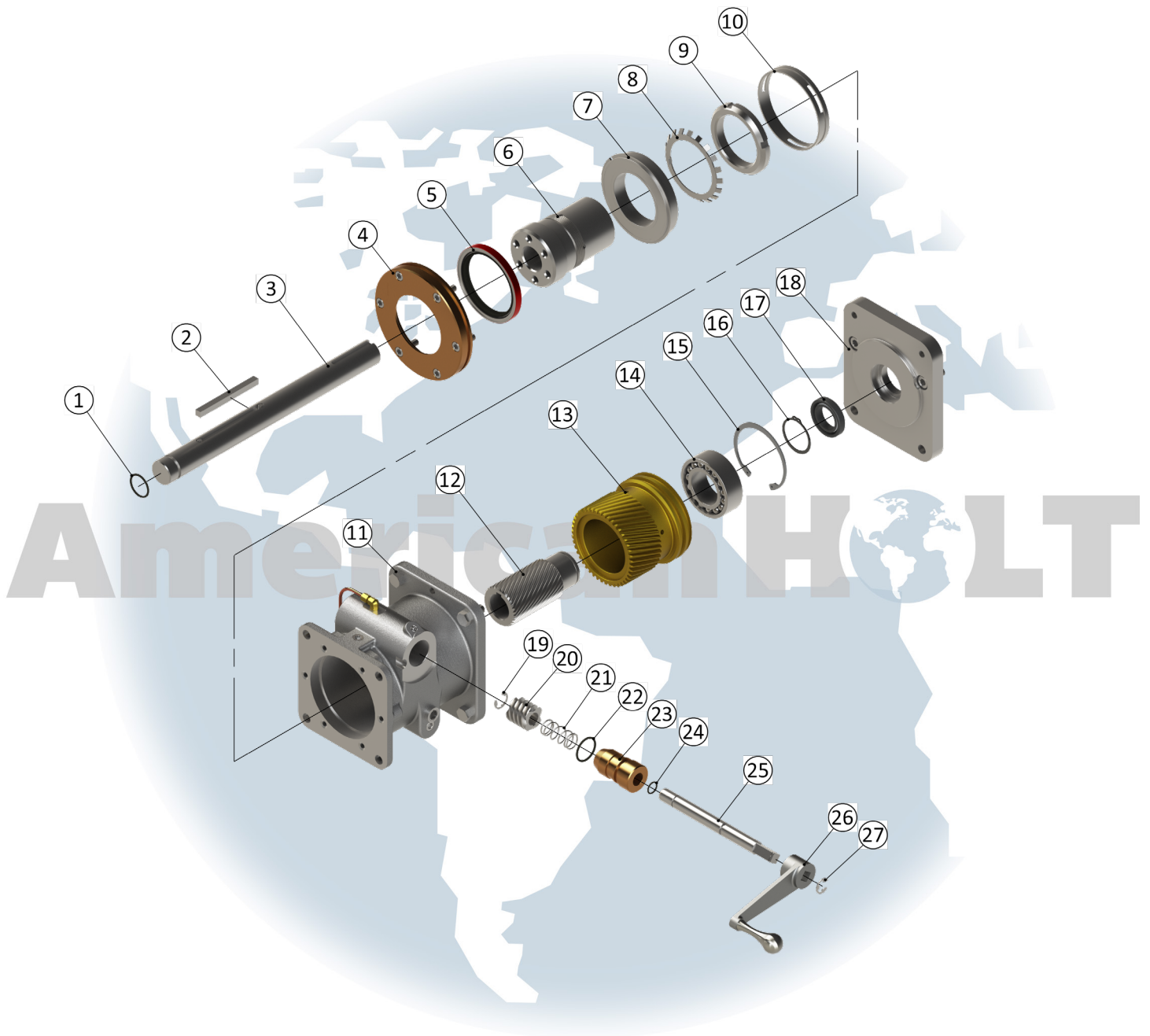
\* - Item made-to-order    N/A - Item is not currently offered by American Holt

**FOR MORE INFORMATION, CONTACT AMERICAN HOLT AT:**  
781-440-9993 • sales@americanholt.com • www.americanholt.com

# 60L Seamer

AFTER MARKET PARTS FOR:

## IN-MOTION TIMER - 1387577-MAH



**NOTICE:** All parts offered by American Holt are manufactured by or for American Holt and not by or for the Original Equipment Manufacturer. Part numbers shown that are those of the Original Equipment Manufacturer, if any, are used for reference purposes only. American Holt is an independent supplier of quality replacement parts having no affiliation with any Original Equipment Manufacturer. All prices are subject to change without notice. Copyright ©2019 American Holt Corp. All rights reserved.

IN-STOCK AND READY TO SHIP.

\* Item made-to-order

## IN-MOTION TIMER - 1387577-MAH

ITEM NO.	PART NO.	DESCRIPTION	QTY
1	12L615AH	O-Ring #217	1
2	28L647AH	In-Motion Timer Key	1
3	66L644AH	Drive Shaft	1
4	30L617AH	Bearing Retainer (INCLUDES HARDWARE)	1
5	13L615AH	Oil Seal	1
6	140L623AH	Drive Flange - LH	1
7	99L616AH	Ball Bearing	1
8	159L816AH	Bearing Lockwasher	1
9	158L816AH	Bearing Locknut	1
10	265L653AH	Spacer	1
11	71L643AH	IN-Motion Timer Housing	1
11.1	58L614AH	Oil Gauge	1
12	51L623AH	Drive Sleeve	1
13	50L623AH	Adjusting Sleeve	1
14	100L616AH	Ball Bearing	1
15	9L617AH	Retaining Ring	1
16	29L617AH	Retaining Ring	1
17	10L615AH	Oil Seal 1-7/16" ID 2-1/4" OD X 1/2" W	1
18	72L643AH	Mounting Plate	1
19	2L617AH	Retaining Ring - Stainless Steel	1
20	53L623AH	Worm	1
21	3P140AH	Worm Shaft Drag Spring	1
22	97L815AH	O-Ring #218	1
23	359L616AH	Worm Shaft Bearing	1
24	11L615AH	O-Ring #113	1
25	65L644AH	Worm Gear Shaft	1
26	12L653AH	Crank Handle	1
27	1L617AH	Retaining Ring - Nickel Plated	1

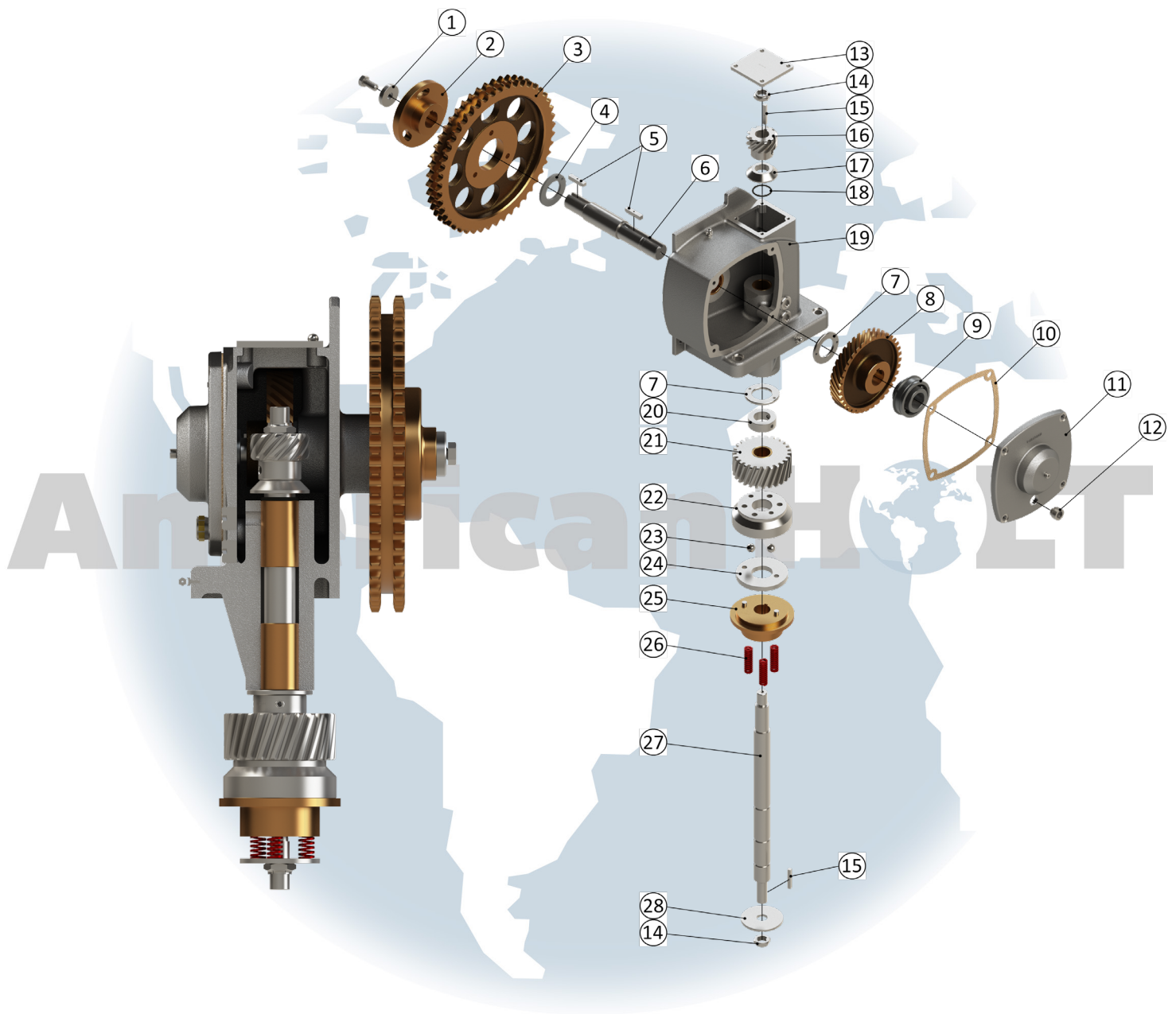
\* - Item made-to-order    N/A - Item is not currently offered by American Holt

**FOR MORE INFORMATION, CONTACT AMERICAN HOLT AT:**  
781-440-9993 • sales@americanholt.com • www.americanholt.com

# 60L Seamer

AFTER MARKET PARTS FOR:

## CAN FEED AND DISCHARGE CANNERY A



**NOTICE:** All parts offered by American Holt are manufactured by or for American Holt and not by or for the Original Equipment Manufacturer. Part numbers shown that are those of the Original Equipment Manufacturer, if any, are used for reference purposes only. American Holt is an independent supplier of quality replacement parts having no affiliation with any Original Equipment Manufacturer. All prices are subject to change without notice. Copyright ©2019 American Holt Corp. All rights reserved.

IN-STOCK AND READY TO SHIP.

## CAN FEED AND DISCHARGE CANNERY A

ITEM NO.	PART NO.	DESCRIPTION	QTY
1	78P290AH	Washer	1
2	4L624AH	Feed Drive Sprocket Hub	1
3	3L624AH	Feed Drive Sprocket	1
4	177L616AH	Washer	1
5	15L647AH	Feed Drive Sprocket Key	2
6	128L644AH	Feed Drive Sprocket Shaft (INCLUDES HARDWARE)	1
7	22P216AH	Thrust Washer	2
8	6L623AH	Feed Drive Spiral Gear (INCLUDES HARDWARE)	1
9	154L616AH	Bearing	1
10	40L615AH	Feed Drive Case Gasket	1
11	126L654AH	Drive Case Side Cover	1
12	58L614AH	Oil Gauge	1
13	6L654AH	Feed Drive Case Top Cover	1
14	30L616AH	Flexloc Nut	2
15	14L647AH	Feed Drive Shaft Key	2
16	5L623AH	Feed Drive Pinion	1
17	50L616AH	Drive Spiral Pinion Washer	1
18	12L615AH	O-Ring #217	1
19	645L643AH	Feed Drive Case	1
20	15L653AH	Safety Clutch Shaft Collar (INCLUDES HARDWARE)	1
21	20L623AH	Feed Drive Pinion (INCLUDES HARDWARE)	1
22	3L697AH	Drive Safety Clutch Hub (INCLUDES HARDWARE)	1
23	48L616AH	Steel Ball - Hardened	2
24	2L697AH	Safety Clutch Drive Plate	1
25	1L697AH	Safety Clutch Drive Hub (INCLUDES HARDWARE)	1
26	8L640AH	Safety Clutch Spring	3
27	12L644AH	Feed Drive Vertical Shaft	1
28	49L616AH	Safety Clutch Spring Washer	1
	47L616AH (NOT SHOWN)	Clutch Disc Ball	1
N/A	736L654AH	Feed Drive Guard	1
N/A	61L628AH	Pin Feed Drive Guard	1
N/A	26L854AH	Closure/Snap-in Blank 0.7500	1

\* - Item made-to-order    N/A - Item is not currently offered by American Holt

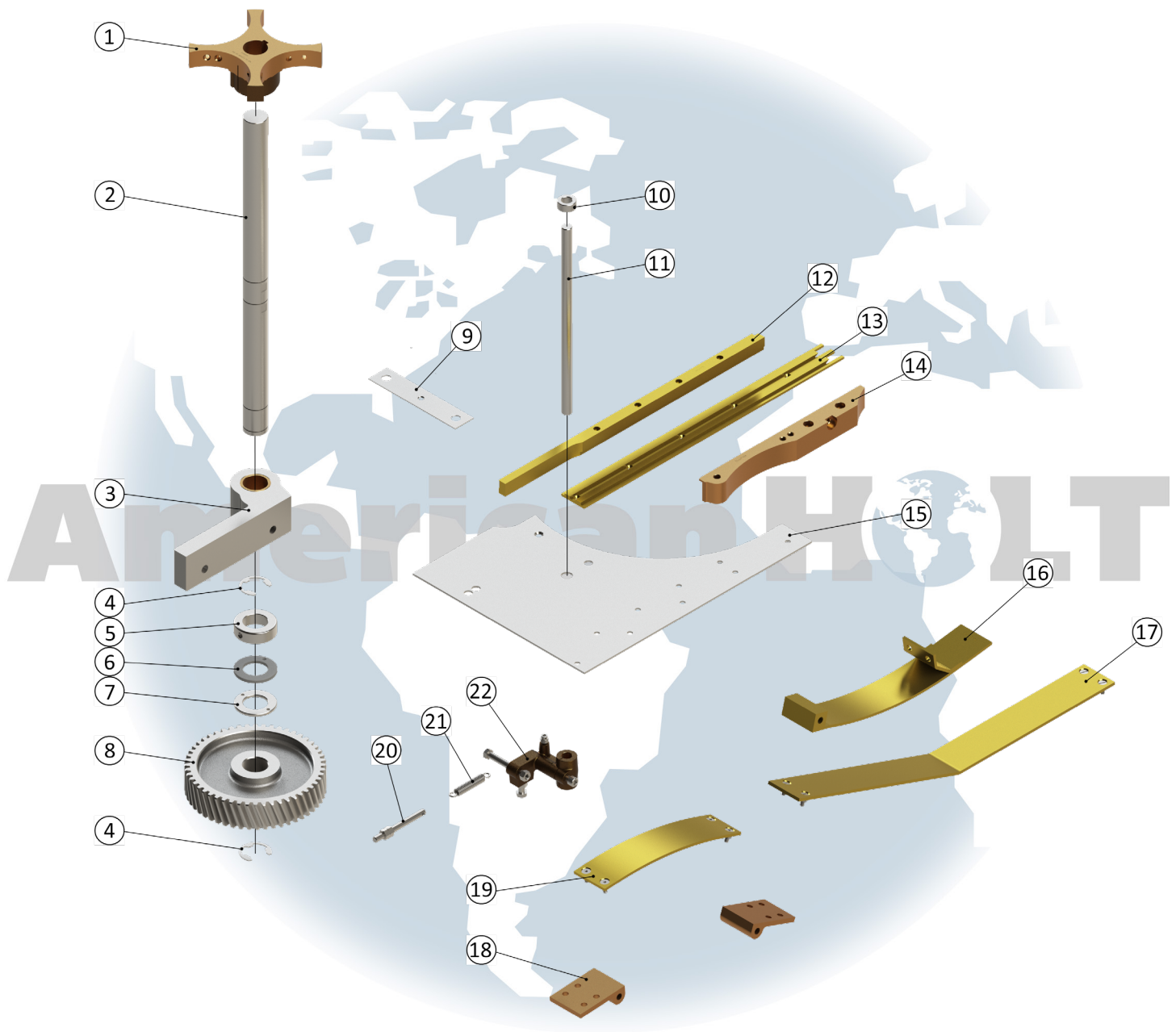
**FOR MORE INFORMATION, CONTACT AMERICAN HOLT AT:**  
781-440-9993 • sales@americanholt.com • www.americanholt.com



# 60L Seamer

AFTER MARKET PARTS FOR:

## CAN FEED AND DISCHARGE CANNERY B



**NOTICE:** All parts offered by American Holt are manufactured by or for American Holt and not by or for the Original Equipment Manufacturer. Part numbers shown that are those of the Original Equipment Manufacturer, if any, are used for reference purposes only. American Holt is an independent supplier of quality replacement parts having no affiliation with any Original Equipment Manufacturer. All prices are subject to change without notice. Copyright ©2019 American Holt Corp. All rights reserved.

IN-STOCK AND READY TO SHIP.

## CAN FEED AND DISCHARGE CANNERY B

ITEM NO.	PART NO.	DESCRIPTION	QTY
1	1L645AH	Discharge Star Hub (INCLUDES HARDWARE)	1
2	14L644AH	Discharge Shaft (INCLUDES HARDWARE)	1
3	6L643AH	Discharge Bracket (INCLUDES HARDWARE)	1
4	4L617AH	Retaining Ring - Nickel Plated	2
5	43L853AH	Discharge Intermediate Shaft Collar (INCLUDES HARDWARE)	1
6	177L616AH	Washer	1
7	22P216AH	Thrust Washer	1
8	19L623AH	Discharge Gear (INCLUDES HARDWARE)	1
9	254L616AH	Extension Table Shim	2
N/A	382L616AH	Discharge Bracket Shim 0.003, 0.005, 0.010 Thick	5
10	21L653AH	Collar (INCLUDES HARDWARE)	1
11	24L644AH	Discharge Rail Shaft	1
12	3L669AH	Feed Chain Guide Rail	1
13	4L669AH	Chain Feed Wear Strip	1
14	1L669AH	Feed Chain Cover Rail (INCLUDES HARDWARE)	1
15	7L669AH	Feed Table Wear Plate	1
N/A	88L653AH	Feed Chain Wear Strip Spacer	1
N/A	89L653AH	Feed Chain Wear Strip Spacer 2nd	1
N/A	5L643AH	Feed Table	1
N/A	24L654AH	Feed Drive Sprocket Shield	1
16	6L669AH	Feed Chain Return Hold Down	1
17	201L669AH	Feed Chain Return Support (INCLUDES HARDWARE)	1
18	203L669AH	Feed Chain Support Bracket	2
19	202L669AH	Feed Chain Section Support (INCLUDES HARDWARE)	1
20	16L626AH	Discharge Rail Spring Screw (INCLUDES HARDWARE)	1
21	13L640AH	Discharge Rail Spring	1
22	3L646AH	Discharge Rail Stop Lever (INLCUES HARDWARE)	1

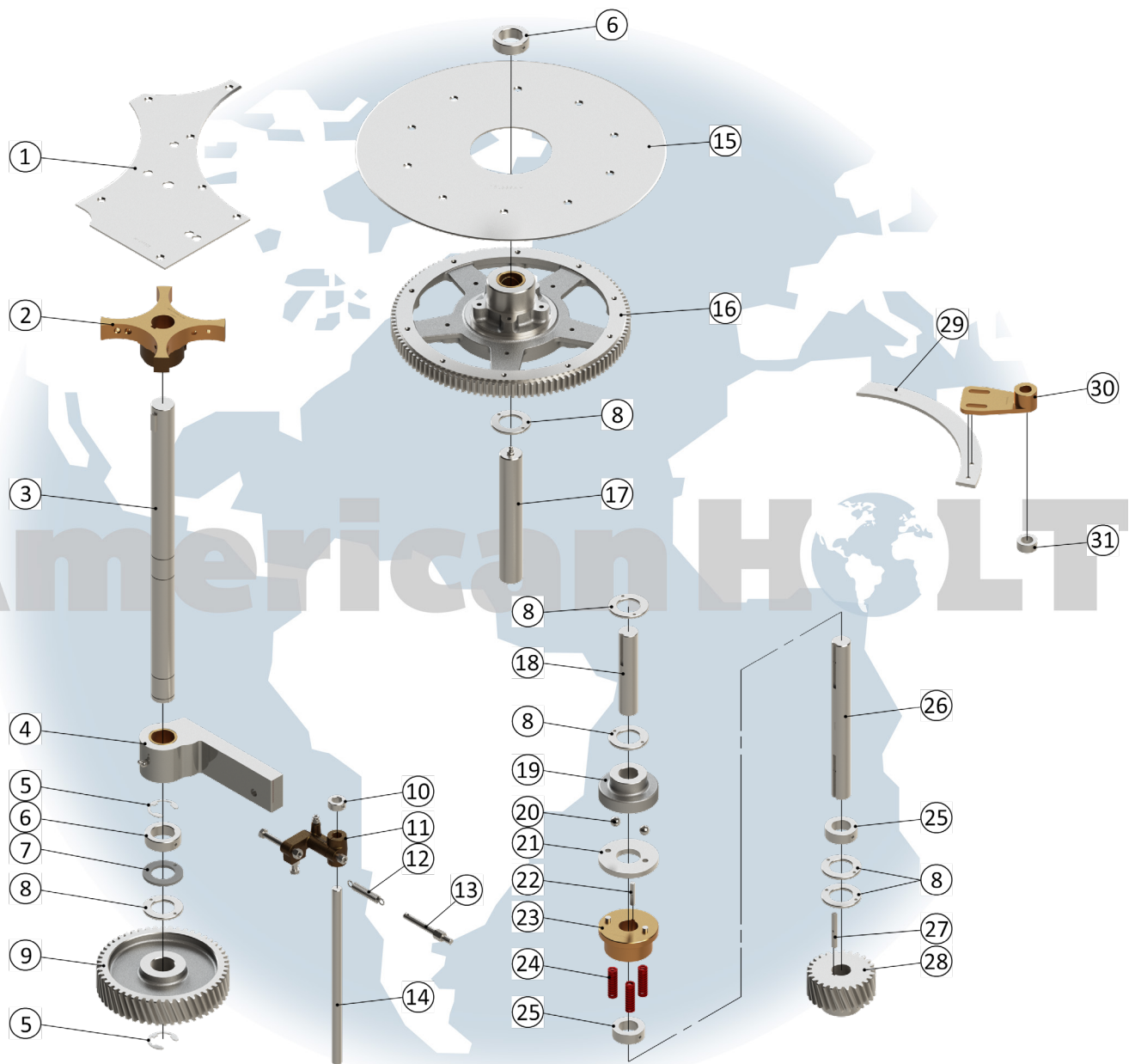
\* - Item made-to-order    N/A - Item is not currently offered by American Holt

**FOR MORE INFORMATION, CONTACT AMERICAN HOLT AT:**  
781-440-9993 • sales@americanholt.com • www.americanholt.com

# 60L Seamer

AFTER MARKET PARTS FOR:

## CAN FEED AND DISCHARGE CAN SHOP A



**NOTICE:** All parts offered by American Holt are manufactured by or for American Holt and not by or for the Original Equipment Manufacturer. Part numbers shown that are those of the Original Equipment Manufacturer, if any, are used for reference purposes only. American Holt is an independent supplier of quality replacement parts having no affiliation with any Original Equipment Manufacturer. All prices are subject to change without notice. Copyright ©2019 American Holt Corp. All rights reserved.

IN-STOCK AND READY TO SHIP.

\* Item made-to-order

## CAN FEED AND DISCHARGE CAN SHOP A

ITEM NO.	PART NO.	DESCRIPTION	QTY
1	20L669AH	Feed Table Wear Plate	1
2	1L645AH	Discharge Star Hub (INCLUDES HARDWARE)	1
3	14L644AH	Discharge Shaft (INCLUDES HARDWARE)	1
4	6L643AH	Discharge Bracket (INCLUDES HARDWARE)	1
5	4L617AH	Retaining Ring - Nickel Plated	2
6	4P253AH	Thrust Collar (INCLUDES HARDWARE)	1
7	177L616AH	Washer	1
8	22P216AH	Thrust Washer	6
9	19L623AH	Discharge Gear (INCLUDES HARDWARE)	1
10	21L653AH	Collar (INCLUDES HARDWARE)	1
11	3L646AH	Discharge Rail Stop Lever (INCLUDES HARDWARE)	1
12	13L640AH	Discharge Rail Spring	1
13	16L626AH	Discharge Rail Spring Screw (INCLUDES HARDWARE)	1
14	24L644AH	Discharge Rail Shaft	1
N/A	19L669AH	Feed Star Clamp Ring	1
15	18L669AH	Feed Disc	1
16	32L623AH	Feed Disc Gear 115T 8P	1
17	28L644AH	Feed Disc Shaft (INCLUDES HARDWARE)	1

ITEM NO.	PART NO.	DESCRIPTION	QTY
N/A	24L647AH	Feed Disc Pinion Key	1
N/A	31L623AH	Feed Disc Pinion	1
N/A	21L643AH	Feed Table	1
18	79L644AH	Upper Can Feed Shaft	1
19	31L697AH	Driven Safety Clutch Hub (INCLUDES HARDWARE)	1
20	48L616AH	Steel Ball - Hardened	2
21	2L697AH	Safety Clutch Drive Plate	1
22	14L647AH	Feed Drive Shaft Key	1
23	30L697AH	Safety Clutch Drive Hub (INCLUDES HARDWARE)	1
24	8L640AH	Safety Clutch Spring	3
N/A	116L616AH	Safety Clutch Spring Washer	1
25	5P253AH	Collar (INCLUDES HARDWARE)	2
26	80L644AH	Lower Can Feed Shaft	1
27	23L647AH	Feed Drive Pinion Key	1
28	30L623AH	Feed Drive Pinion Gear	1
29	136L669AH	Can Feed Hold Down Bracket	1
30	135L669AH	Can Feed Hold Down	1
N/A	25L626AH	Can Feed Hold Down Stud	1
31	28L653AH	Set Collar (INCLUDES HARDWARE)	1

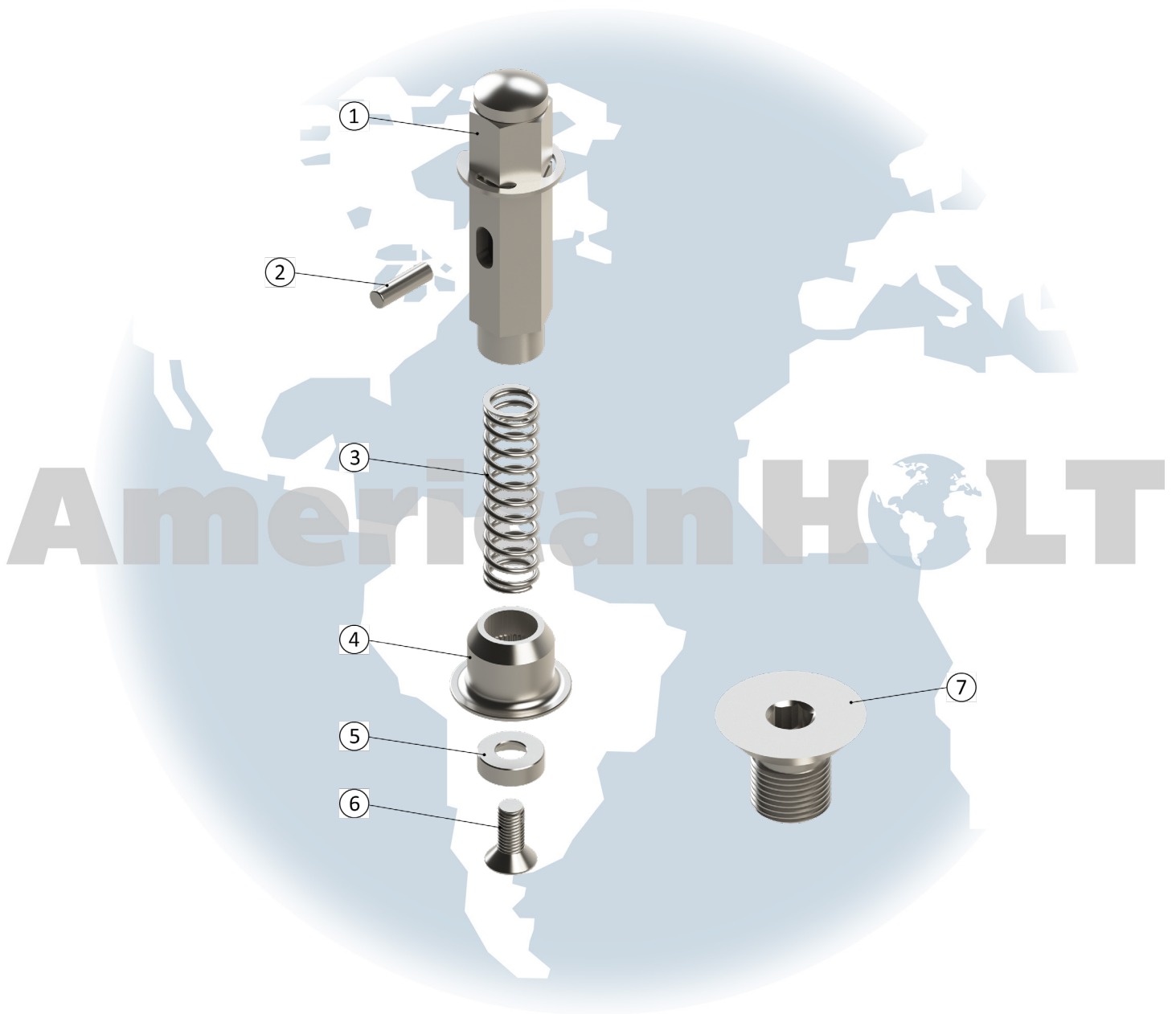
\* - Item made-to-order    N/A - Item is not currently offered by American Holt

**FOR MORE INFORMATION, CONTACT AMERICAN HOLT AT:**  
781-440-9993 • sales@americanholt.com • www.americanholt.com

# 60L Seamer

AFTER MARKET PARTS FOR:

## CAN SHOP EXTRAS



**NOTICE:** All parts offered by American Holt are manufactured by or for American Holt and not by or for the Original Equipment Manufacturer. Part numbers shown that are those of the Original Equipment Manufacturer, if any, are used for reference purposes only. American Holt is an independent supplier of quality replacement parts having no affiliation with any Original Equipment Manufacturer. All prices are subject to change without notice. Copyright ©2019 American Holt Corp. All rights reserved.

IN-STOCK AND READY TO SHIP.

\* Item made-to-order

## CAN SHOP EXTRAS

ITEM NO.	PART NO.	DESCRIPTION	QTY
1	30L644AH	Knockout Rod Hex Cap	1
1.1	2L617AH	Retaining Ring - Stainless Steel	1
2	44L628AH	Knockout Pin	1
3	15L640AH	Knockout Rod Spring	1
N/A	500L644AH	Knockout Rod Assembly	1
4	25L841AH	Knockout Pad	1
5	372L616AH	Knockout Pad Retaining Washer	1
6	63L826AH	Screw	1
7	7L826AH	Domed Lower Chuck Plate Screw (Can Shop Only)	1
	371L616-2AH	Lower Chuck Shim (NOT SHOWN)	
	371L616-5AH		
	371L616-10AH		
	371L616-30AH		

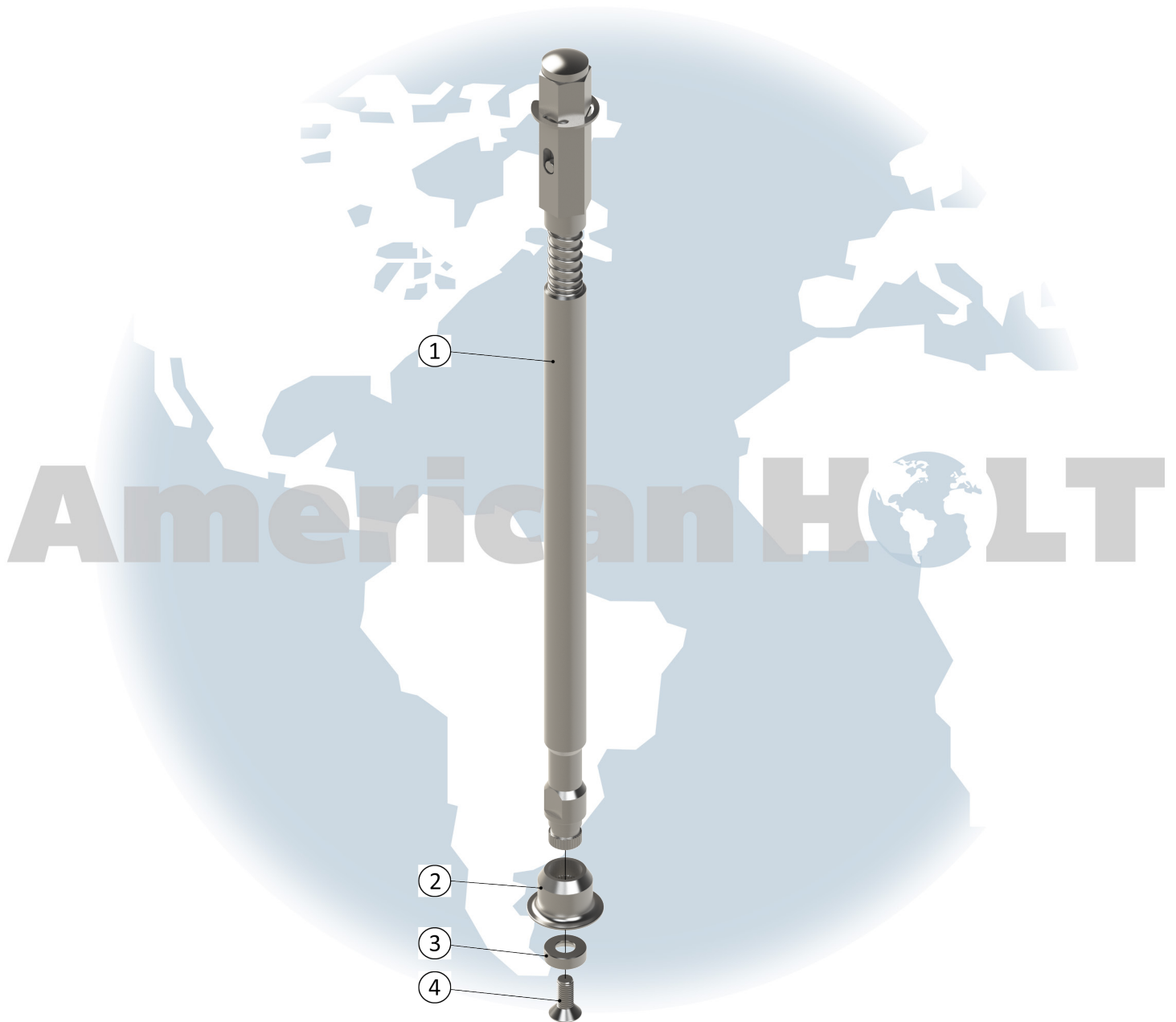
\* - Item made-to-order    N/A - Item is not currently offered by American Holt

**FOR MORE INFORMATION, CONTACT AMERICAN HOLT AT:**  
781-440-9993 • sales@americanholt.com • www.americanholt.com

# 60L Seamer

AFTER MARKET PARTS FOR:

## CANNERY EXTRAS



**NOTICE:** All parts offered by American Holt are manufactured by or for American Holt and not by or for the Original Equipment Manufacturer. Part numbers shown that are those of the Original Equipment Manufacturer, if any, are used for reference purposes only. American Holt is an independent supplier of quality replacement parts having no affiliation with any Original Equipment Manufacturer. All prices are subject to change without notice. Copyright ©2019 American Holt Corp. All rights reserved.



IN-STOCK AND READY TO SHIP.

## CANNARY EXTRAS

ITEM NO.	PART NO.	DESCRIPTION	QTY
1	427L644AH	Knockout Rod	1
1.1	30L644AH	Knockout Rod End	1
1.2	15L640AH	Knockout Rod Cushion Spring	1
1.3	44L628AH	Knockout Rod Pin	1
2	25L841AH	Knockout Pad	1
3	372L616AH	Retaining Washer	1
4	63L826AH	Screw	1

\* - Item made-to-order    N/A - Item is not currently offered by American Holt

**FOR MORE INFORMATION, CONTACT AMERICAN HOLT AT:**  
781-440-9993 • sales@americanholt.com • www.americanholt.com

# 60L Seamer

AFTER MARKET PARTS FOR:

## STEAM VACUUM



**NOTICE:** All parts offered by American Holt are manufactured by or for American Holt and not by or for the Original Equipment Manufacturer. Part numbers shown that are those of the Original Equipment Manufacturer, if any, are used for reference purposes only. American Holt is an independent supplier of quality replacement parts having no affiliation with any Original Equipment Manufacturer. All prices are subject to change without notice. Copyright ©2019 American Holt Corp. All rights reserved.

IN-STOCK AND READY TO SHIP.

## STEAM VACUUM

ITEM NO.	PART NO.	DESCRIPTION	QTY	ITEM NO.	PART NO.	DESCRIPTION	QTY
1	120L653AH	Cap Feed Hollow Shaft Sleeve (INCLUDES HARDWARE)	1	17	63L656AH	Separator Lever (INCLUDES HARDWARE)	1
2	37L656AH	Cap Feed Drag Magnet Holder (INCLUDES HARDWARE)	1	17.1	616P616AH	DS Finger Bearing	2
2.1	*24L626AH	Cap Feed Drag Magnet Screw (INCLUDES HARDWARE)	1	17.2	5L616AH- 281L616AH-AS- SYAH	Needle with Race Bearing	1
2.2	14L633AH	Cap Feed Drag Magnet	1	18	31L620AH	Seaming Cam 1st Operation - Steam	1
3	39L632AH	Turret Hub Wear Ring	1		34L620AH (NOT SHOWN)	Cap Centering Cam	1
4	187L639AH	Turret Manifold - Steam/Vacuum (INCLUDES HARDWARE)	1	19	55L623AH	Seaming Spindle Drive Gear 69 Teeth - Steam	REF
5	221L616AH	Wear Washer	1	20	68L620AH	Lower Chuck Return Cam - Steam	1
6	222L616AH	Washer	1	21	27L620AH	Lower Chuck Cam - Steam	1
7	34L640AH	Spring	4	22	31L617AH	Seaming Spindle Upper Bearing Retainer - Steam (INCLUDES HARDWARE)	REF
8	40L632AH	Spring Retaining Ring (INCLUDES HARDWARE)	1	23	102L616AH	Ball Bearing (PAIR)	REF
9	224L644AH	Cap Feed Turret Hollow Shaft - 24.500 Long, 410-802 (INCLUDES HARDWARE)	1	24	427L644AH	Knockout Rod with Spring	6
9.1	26L617AH	Retaining Ring - Nickel Plated	1	24.1	30L644AH	Knockout Rod Hex Cap	6
10	32L647AH	Key	1	24.2	15L640AH	Knockout Rod Spring	6
11	30L615AH	Keyway Seal 1/4 x 1/2 x 2-1/2	1	24.3	44L628AH	Knockout Pin	6
12	42L632AH	Manifold Anchor Clevis	1	25	254L641AH	Knockout Pad	6
N/A	38L632AH	Manifold Connector	REF	26	372L616AH	Knockout Pad Retaining Washer	6
13	52L626AH	Manifold Anchor Rod (INCLUDES HARDWARE)	1	27	63L826AH	Screw	6
14	100L653AH	Collar	1	N/A	368L639AH	Reducing Valve Bracket	1
15	41L632AH	Manifold Anchor Rod Block	1	N/A	235L639AH	Piping Assembly	1
16	191L616AH	Separator Pin Washer	2	N/A	556L654AH	Steam Vacuum Guard	1

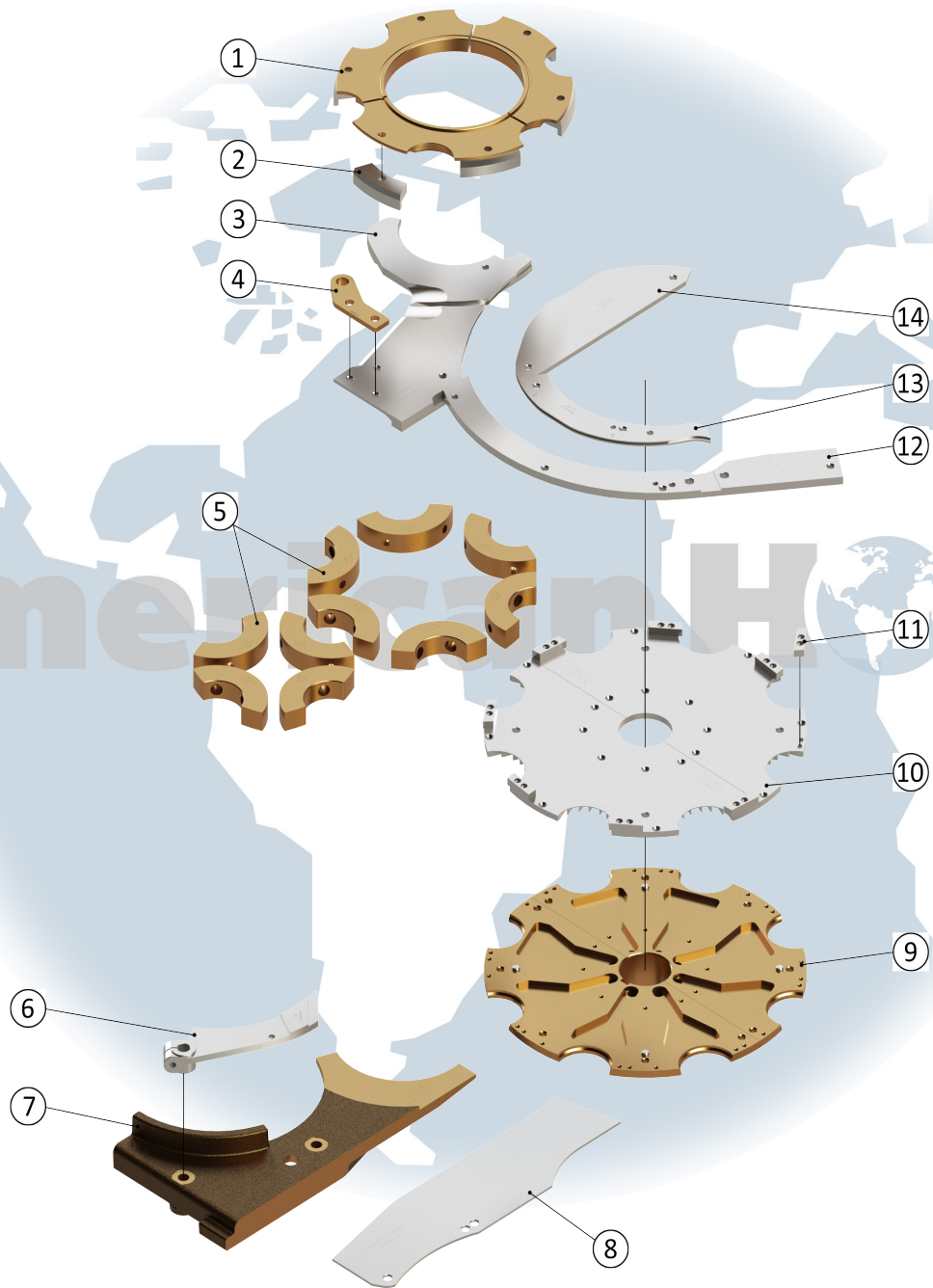
\* - Item made-to-order    N/A - Item is not currently offered by American Holt

**FOR MORE INFORMATION, CONTACT AMERICAN HOLT AT:**  
781-440-9993 • sales@americanholt.com • www.americanholt.com

# 60L Seamer

AFTER MARKET PARTS FOR:

## CHANGE PARTS - STEAM VACUUM - 211 DIA



**NOTICE:** All parts offered by American Holt are manufactured by or for American Holt and not by or for the Original Equipment Manufacturer. Part numbers shown that are those of the Original Equipment Manufacturer, if any, are used for reference purposes only. American Holt is an independent supplier of quality replacement parts having no affiliation with any Original Equipment Manufacturer. All prices are subject to change without notice. Copyright ©2019 American Holt Corp. All rights reserved.

IN-STOCK AND READY TO SHIP.

## CHANGE PARTS - STEAM VACUUM - 211 DIA

ITEM NO.	PART NO.	DESCRIPTION	QTY
1	*24L642AH	Seaming Chuck Bell - 211 Diameter SB=STD LB=-30	1
2	80L642AH	Chuck Bell Cover Guide - 211 Diameter (-30) (INCLUDES HARDWARE)	6
3	364L673AH	Outer Cap Guide Section - 211 Diameter -30	1
4	40L656AH	Discharge Rail Shaft Bracket	1
5	**7L608AH	Turret Liner - 211 X 214 To 400 B=STD (INCLUDES HARDWARE)	10
6	114L645AH	Discharge Rail - 211 Diameter X 113 To 213 (INCLUDES HARDWARE)	1
	92L645AH	Discharge Rail - 211 Steam	
7	**1L683AH	Infeed & Discharge Rail - 211 STD	1
N/A	L669AH	Cover Trip Guard Rail	1
8	45L684AH	Can Feed Inlet Rail - 211 Diameter X 200 To 213	1
9	428L670AH	Cap Feed Turret Plate - 211 Steam (INCLUDES HARDWARE)	1
N/A	L670AH	Cap Feed Turret Insert - Long	8
N/A	L670AH	Cap Feed Turret Insert - Short	8
10	429L670AH	Cap Feed Turret - 211 Steam B=STD (INCLUDES HARDWARE)	1
11	23L659AH	Cap Pusher (INCLUDES HARDWARE)	8
12	325L639AH	Outer Cap Guide - 211 (-30)	1
N/A	L856AH	Separator Disc/Knife	1
13	124L672AH	Inner Cap Guide - 211 (-30)	1
14	363L673AH	Inner Cap Guide Rail - 211 Diameter (-30)	1

**Made-To-Order Options	
**1L683AH+15AH	Infeed & Discharge Rail - 211 (+15)
**7L608AH+15AH	Turret Liner 211 X 214 To 400 B=+15

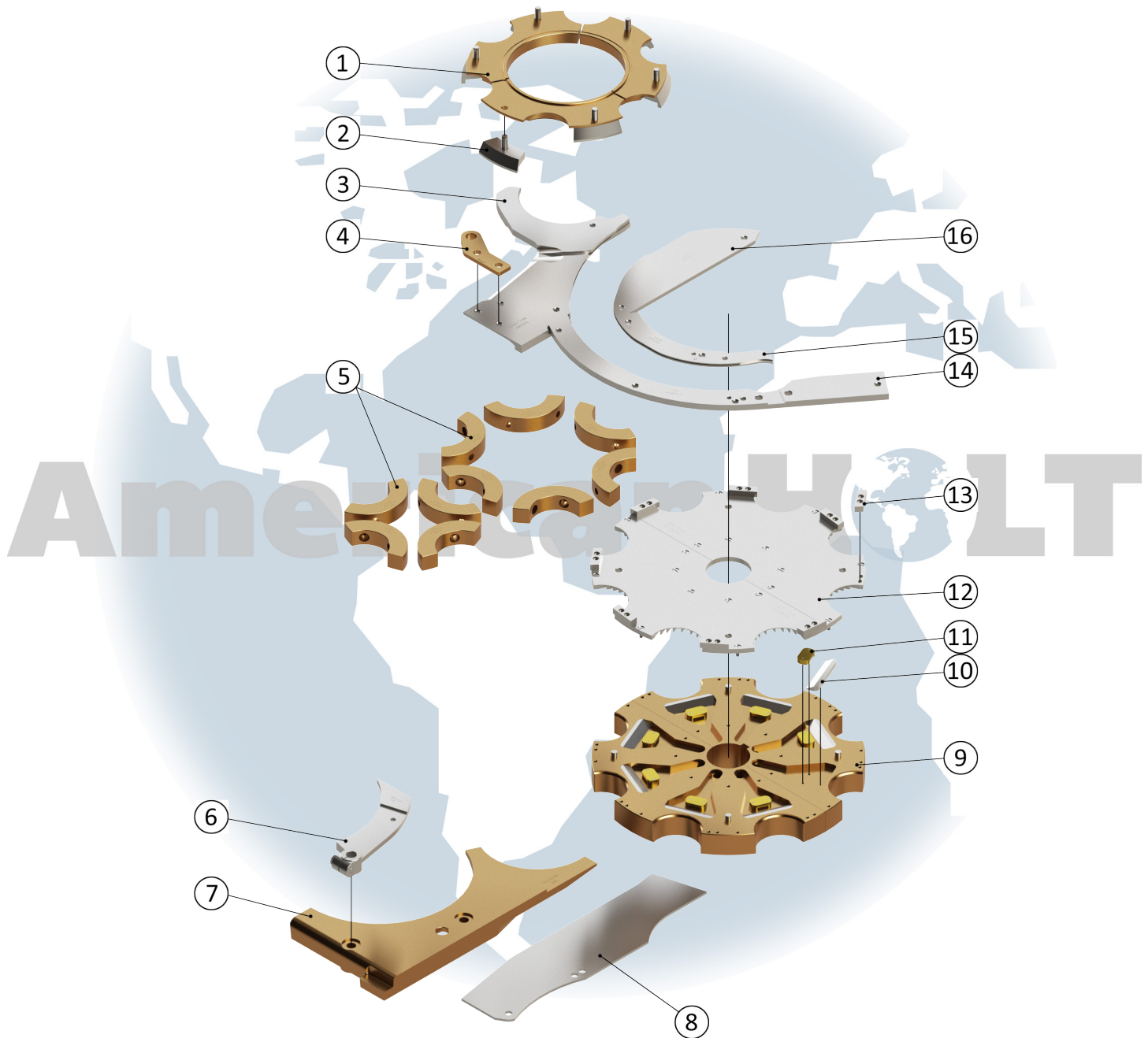
\* - Item made-to-order    N/A - Item is not currently offered by American Holt

**FOR MORE INFORMATION, CONTACT AMERICAN HOLT AT:**  
781-440-9993 • sales@americanholt.com • www.americanholt.com

# 60L Seamer

AFTER MARKET PARTS FOR:

## CHANGE PARTS - STEAM VACUUM - 300 DIA



**NOTICE:** All parts offered by American Holt are manufactured by or for American Holt and not by or for the Original Equipment Manufacturer. Part numbers shown that are those of the Original Equipment Manufacturer, if any, are used for reference purposes only. American Holt is an independent supplier of quality replacement parts having no affiliation with any Original Equipment Manufacturer. All prices are subject to change without notice. Copyright ©2019 American Holt Corp. All rights reserved.

IN-STOCK AND READY TO SHIP.

## CHANGE PARTS - STEAM VACUUM - 300 DIA

ITEM NO.	PART NO.	DESCRIPTION	QTY
1	37L642AH	Seaming Chuck Bell - 300 Diameter	1
2	38L642AH OR 82L642AH	Bell Cover Guide - 300 STD (INCLUDES HARDWARE)	6
3	332L673AH	Outer Cap Guide Section - 300 Diameter	1
4	40L656AH	Discharge Rail Shaft Bracket	1
5	27L608AH	Seaming Star Liner - 300 X 214 To 400 B=STD (INCLUDES HARDWARE)	10
6	108L645AH	Discharge Upper Rail - 300 (INCLUDES HARDWARE)	1
7	21L683AH	Can Feed Discharge Rail - 300	1
N/A	L669AH	Cover Trip Guard Rail	1
8	31L684AH	Can Feed Inlet Rail - 300 Diameter	1
9	441L670AH	Cap Feed Turret - 300 X 302 B=STD CB=STD (INCLUDES HARDWARE)	1
10	127L670AH	Feed Turret Insert	8
11	184L670AH	Cap Feed Turret Insert - Short (INCLUDES HARDWARE)	8
12	440L670AH	Cap Feed Turret - 300 Diameter B=STD (INCLUDES HARDWARE)	1
13	3L659AH	Cap Pusher - 300 To 301 (INCLUDES HARDWARE)	8
14	317L639AH	Outer Cap Guide - 300 Diameter	1
N/A	L856AH	Separator Disc/Knife	1
15	73L672AH	Inner Cap Guide - 300 Diameter	1
16	331L673AH	Cap Guide Rail - 300 Diameter	1

\* - Item made-to-order    N/A - Item is not currently offered by American Holt

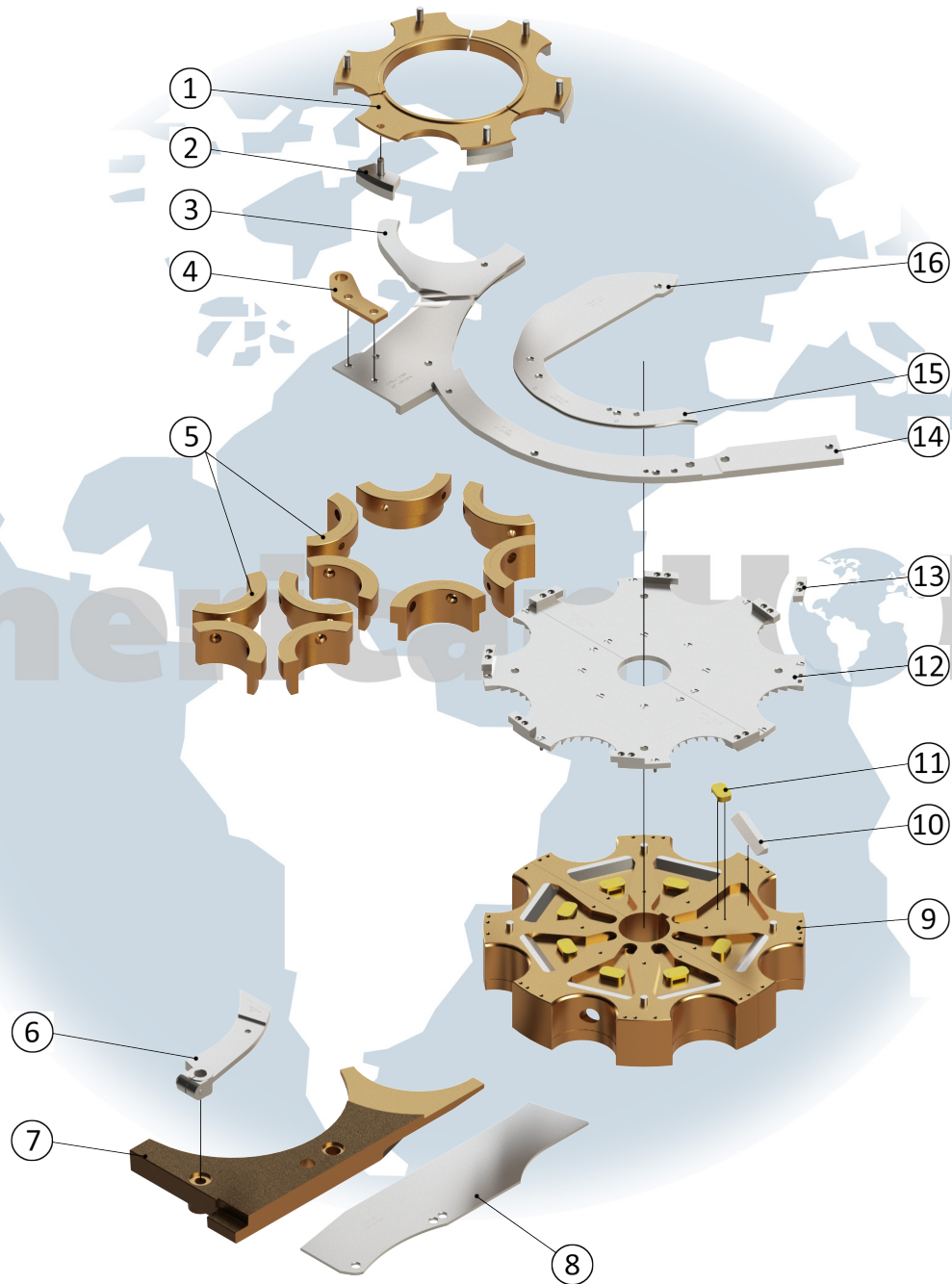
**FOR MORE INFORMATION, CONTACT AMERICAN HOLT AT:**  
781-440-9993 • sales@americanholt.com • www.americanholt.com



# 60L Seamer

AFTER MARKET PARTS FOR:

## CHANGE PARTS - STEAM VACUUM - 307 DIA



**NOTICE:** All parts offered by American Holt are manufactured by or for American Holt and not by or for the Original Equipment Manufacturer. Part numbers shown that are those of the Original Equipment Manufacturer, if any, are used for reference purposes only. American Holt is an independent supplier of quality replacement parts having no affiliation with any Original Equipment Manufacturer. All prices are subject to change without notice. Copyright ©2019 American Holt Corp. All rights reserved.

IN-STOCK AND READY TO SHIP.

## CHANGE PARTS – STEAM VACUUM – 307 DIA

ITEM NO.	PART NO.	DESCRIPTION	QTY
1	*28L642AH	Seaming Chuck Bell - 307 SB=STD LB(-15)	1
2	84L642AH	Chuck Bell Cover Guide - 307 (-15) (INCLUDES HARDWARE)	6
3	335L673AH	Outer Cap Guide Section - 307 Diameter -30	1
4	40L656AH	Discharge Rail Shaft Bracket	1
5	5L608AH	Seaming & Discharge Star Liner - 307 X 314 To 506 STD (INCLUDES HARDWARE)	10
6	95L645AH	Discharge Upper Rail - 307 (INCLUDES HARDWARE)	1
7	20L683AH	Can Feed & Discharge Rail - 307	1
N/A	L669AH	Cover Trip Guard Rail	1
8	30L684AH	Can Feed Inlet Rail - 307 Diameter	1
9	**462L670AH	Cap Feed Turret - 307 X 406 To 411 STD (INCLUDES HARDWARE)	1
10	177L670AH	Feed Turret Insert 211 Diameter	8
11	184L670AH	Cap Feed Turret Insert - Short (INCLUDES HARDWARE)	8
12	459L670AH	Cap Feed Turret Plate - 307 B=STD (INCLUDES HARDWARE)	1
13	3L659AH	Cap Pusher - 300 To 301 (INCLUDES HARDWARE)	8
14	322L639AH	Outer Cap Guide - 307 Diameter (-30)	1
N/A	L856AH	Separator Disc/Knife	1
15	113L672AH	Inner Cap Guide - 307 (-30)	1
16	334L673AH	Inner Cap Guide Rail - 307 (-30)	1
<b>**Option</b>			
**462L670AH-SHORTAH		Cap Feed Turret - 307 X 203 To 406 STD (INCLUDES HARDWARE)	

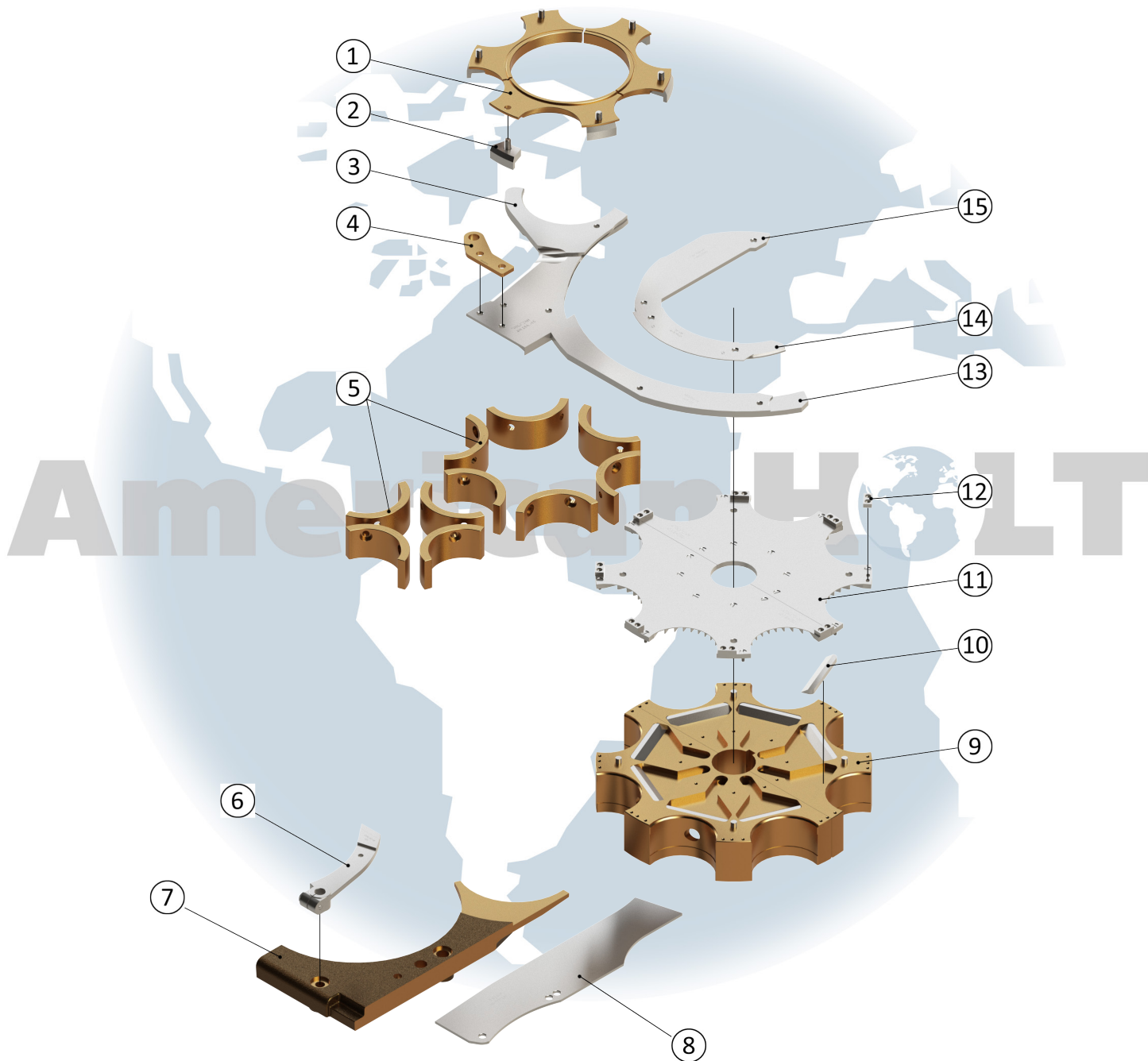
\* - Item made-to-order    N/A - Item is not currently offered by American Holt

**FOR MORE INFORMATION, CONTACT AMERICAN HOLT AT:**  
781-440-9993 • sales@americanholt.com • www.americanholt.com

# 60L Seamer

AFTER MARKET PARTS FOR:

## CHANGE PARTS - STEAM VACUUM - 401 DIA



**NOTICE:** All parts offered by American Holt are manufactured by or for American Holt and not by or for the Original Equipment Manufacturer. Part numbers shown that are those of the Original Equipment Manufacturer, if any, are used for reference purposes only. American Holt is an independent supplier of quality replacement parts having no affiliation with any Original Equipment Manufacturer. All prices are subject to change without notice. Copyright ©2019 American Holt Corp. All rights reserved.

IN-STOCK AND READY TO SHIP.

## CHANGE PARTS - STEAM VACUUM - 401 DIA

ITEM NO.	PART NO.	DESCRIPTION	QTY
1	39L642AH	Seaming Chuck Bell - 401 Diameter	1
2	83L642AH	Chuck Bell Cover Guide - 401 (-30) (INCLUDES HARDWARE)	6
3	701L672AH	Outer Cap Guide Section - 401 (-15)	1
4	40L656AH	Discharge Rail Shaft Bracket	1
5	12L608AH	Seaming & Discharge Star Liner - 401 X 314 To 505 B=STD (INCLUDES HARDWARE)	10
6	109L645AH	Discharge Upper Rail - 401 (INCLUDES HARDWARE)	1
7	2L683AH	Can Feed & Discharge Rail - 401 Diameter STD	1
N/A	L669AH	Cover Trip Guard Rail	1
8	35L684AH	Can Feed Inlet Rail - 401 Diameter	1
9	*471L670AH	Cap Feed Turret - 401 X 314 To 506 B=+15 CB=STD (INCLUDES HARDWARE)	1
10	166L670AH	Cap Feed Turret Insert - Long - 401	8
N/A	L670AH	Cap Feed Turret Insert - Short	8
11	470L670AH	Cap Feed Turret Plate - 401 B=STD (INCLUDES HARDWARE)	1
12	23L659AH	Cap Pusher (INCLUDES HARDWARE)	8
13	426L639AH	Outer Cap Guide Rail - 401 (-15)	1
	61L856AH (NOT SHOWN)	Separator Disc/Knife	1
14	699L672AH	Inner Cap Guide - 401 (-15) (INCLUDES HARDWARE)	1
15	700L672AH	Inner Cap Guide Rail - 401 (-15)	1

\* - Item made-to-order    N/A - Item is not currently offered by American Holt

**FOR MORE INFORMATION, CONTACT AMERICAN HOLT AT:**  
781-440-9993 • sales@americanholt.com • www.americanholt.com

# 60L Seamer

AFTER MARKET PARTS FOR:

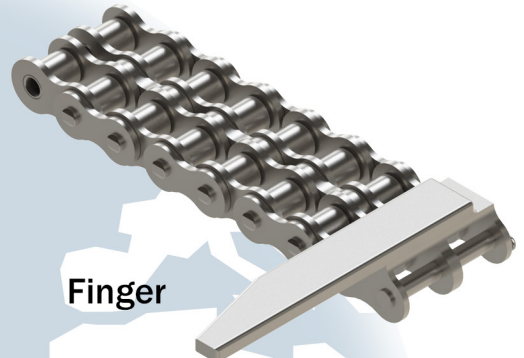
## CHAINS AND SPROCKETS

3L624AH  
(48 Teeth)



2L624AH

1L624AH



Finger

Chain

20S824AH  
(44 Teeth)

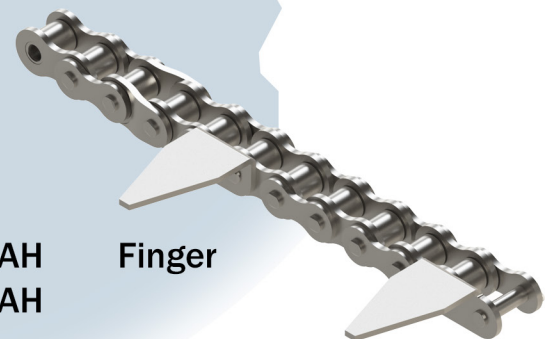


3H624AH

2H624AH

4H624AH

5L824AH



Finger

#80 Chain

**NOTICE:** All parts offered by American Holt are manufactured by or for American Holt and not by or for the Original Equipment Manufacturer. Part numbers shown that are those of the Original Equipment Manufacturer, if any, are used for reference purposes only. American Holt is an independent supplier of quality replacement parts having no affiliation with any Original Equipment Manufacturer. All prices are subject to change without notice. Copyright ©2019 American Holt Corp. All rights reserved.