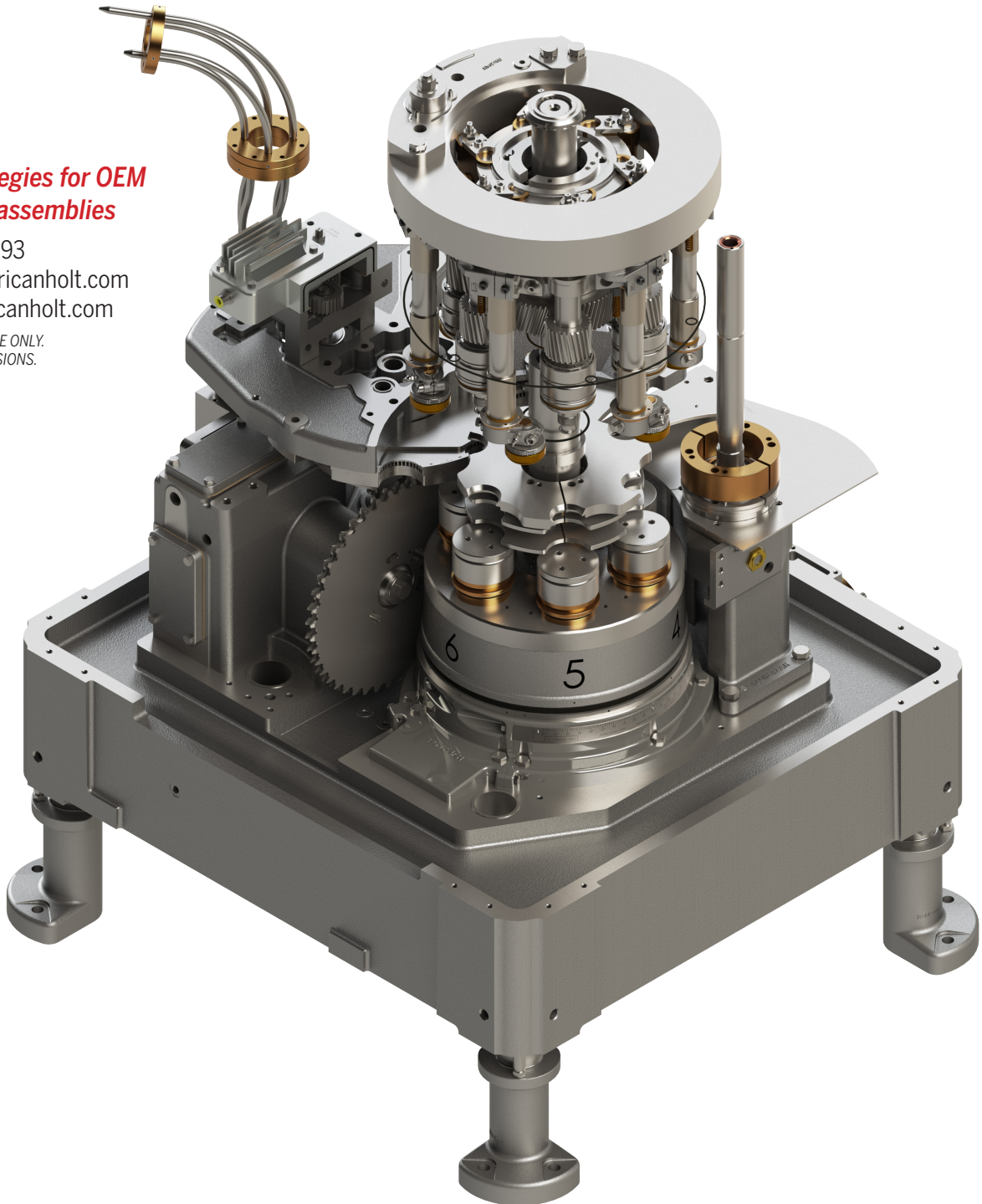


61H and 62H Seamers

*MRO strategies for OEM
parts and assemblies*

781-440-9993
sales@americanholt.com
www.americanholt.com

FOR INTERNAL USE ONLY.
SUBJECT TO REVISIONS.



American HOLT
engineered savings®



American Holt is a full-service engineering firm focused on the reverse engineering of high-usage machinery components. Founded in 1995, American Holt manufactures aftermarket replacement parts for machines used by the beverage, food processing, packaging, and paper converting industries. We provide engineered savings to customers around the world.

CONTACT:

American Holt
203 Carnegie Row
Norwood, MA 02062
781-440-9993
sales@americanholt.com

HOURS:

Monday-Friday
8:00am to 5:00pm EST

SALES:

Tom St. Lawrence, President
Charlene Butts, Sales Manager

NOTICE:

All parts offered by American Holt are manufactured by or for American Holt and not by or for the Original Equipment Manufacturer. Part numbers shown that are those of the Original Equipment Manufacturer, if any, are used for reference purposes only. American Holt is an independent supplier of quality replacement parts having no affiliation with any Original Equipment Manufacturer. All prices are subject to change without notice.

Copyright ©2023 American Holt Corp. All rights reserved.

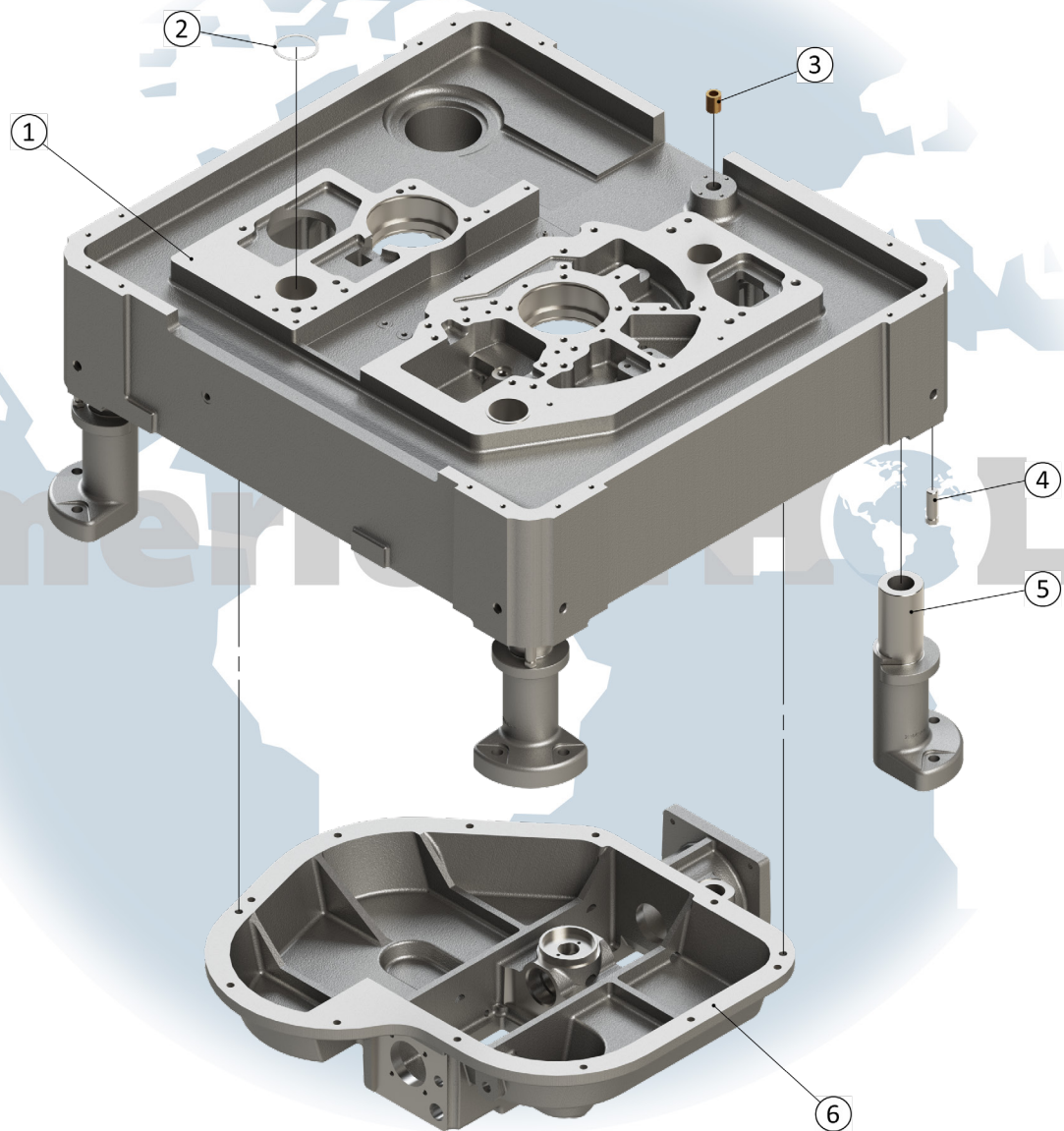
Table of Contents **61H and 62H Seamer**

| | |
|--|----|
| BASE | 2 |
| FEED DRIVE PART 1 – FEEDDRIVE-61H-62H-ASSYAH | 4 |
| FEED DRIVE PART 2 – FEEDDRIVE-61H-62H-ASSYAH..... | 6 |
| FEED GEARING PART 1..... | 8 |
| FEED GEARING PART 2 | 10 |
| FEED TURRET | 12 |
| DISCHARGE TABLE PART 1 | 14 |
| DISCHARGE TABLE PART 2..... | 16 |
| IN-MOTION TIMER FILLER DRIVE - 1387576-MAH..... | 18 |
| IN-MOTION TIMER FILLER DRIVE - 1387576-MAH (FILLER DRIVE PART 1)..... | 20 |
| IN-MOTION TIMER FILLER DRIVE - 1387576-MAH (FILLER DRIVE PART 2) | 22 |
| IN-MOTION TIMER FILLER DRIVE - 1387576-MAH (IN-MOTION TIMER - 1387577-MAH) | 24 |
| LOWER TURRET..... | 26 |
| UPPER TURRET | 28 |
| LOWER CHUCK - BOTTOM - 11L800AH..... | 30 |
| LOWER CHUCK - TOP - 13L800AH | 32 |
| SEAMING SPINDLE & CHUCK..... | 34 |
| SEAMING LEVER 1ST OPERATION..... | 36 |
| SEAMING LEVER 2ND OPERATION | 38 |
| SEAMING ROLLS | 40 |
| UPPER TURRET HOUSING SEPARATOR..... | 42 |
| SEPARATOR BRACKET - SEPARATORASSY-61H-202AH..... | 44 |
| SOLENOID KIT - SOLCASE-ELE-ASSYAH-61H-202AH..... | 46 |
| SEPARATOR BRACKET – SEPARATORASSY-61H-202AH..... | 46 |
| CHANGE PARTS – 202 LID X 211 CAN (32 DEGREES) | 48 |
| CHANGE PARTS – 200 LID X 202 CAN..... | 50 |
| CHANGE PARTS – 202 LID X 204 CAN | 52 |
| CHANGE PARTS 211 DIAMETER..... | 54 |
| CHANGE PARTS – 300 FOOD | 56 |
| TOOLS & MISCELLANEOUS PARTS | 58 |

61H and 62H Seamers

AFTER MARKET PARTS FOR:

BASE



NOTICE: All parts offered by American Holt are manufactured by or for American Holt and not by or for the Original Equipment Manufacturer. Part numbers shown that are those of the Original Equipment Manufacturer, if any, are used for reference purposes only. American Holt is an independent supplier of quality replacement parts having no affiliation with any Original Equipment Manufacturer. All prices are subject to change without notice. Copyright ©2019 American Holt Corp. All rights reserved.

IN-STOCK AND READY TO SHIP.

BASE

| ITEM NO. | PART NO. | DESCRIPTION | QTY |
|----------|----------------------|---|-----|
| 1 | 383H643AH | Base (INCLUDES HARDWARE) | 1 |
| N/A | 451H654AH | Drainage Grate | 1 |
| N/A | 419H654AH | Cover Plate | 3 |
| N/A | 1H644AH | Split Column w/ 69L626AH | 1 |
| N/A | 2H644AH | Split Column w/ 69L626AH | 1 |
| 2 | 3H617AH | Snap Ring 2.687 Shaft | 2 |
| 3 | 89L816AH | Oilite Bushing 0.6250 X 1.0000 X 1.2500 | 1 |
| 4 | 1L826AH | Base Leg Adjustment Screw | 4 |
| 5 | 2H643AH | Base Leg | 4 |
| N/A | 1S839AH | Short Turn Elbow 90° | 1 |
| 6 | 384H643AH | Base Gear Housing | 1 |
| N/A | 549H654AH | Base Cover Plate (Level Probe) | 1 |
| N/A | 408H654AH | Filler Drive Cover | 2 |
| | 24H615AH (NOT SHOWN) | Gasket | 1 |
| N/A | 540H643AH | Base Top Plate | 1 |
| N/A | 555H643AH | Base Trough | 1 |

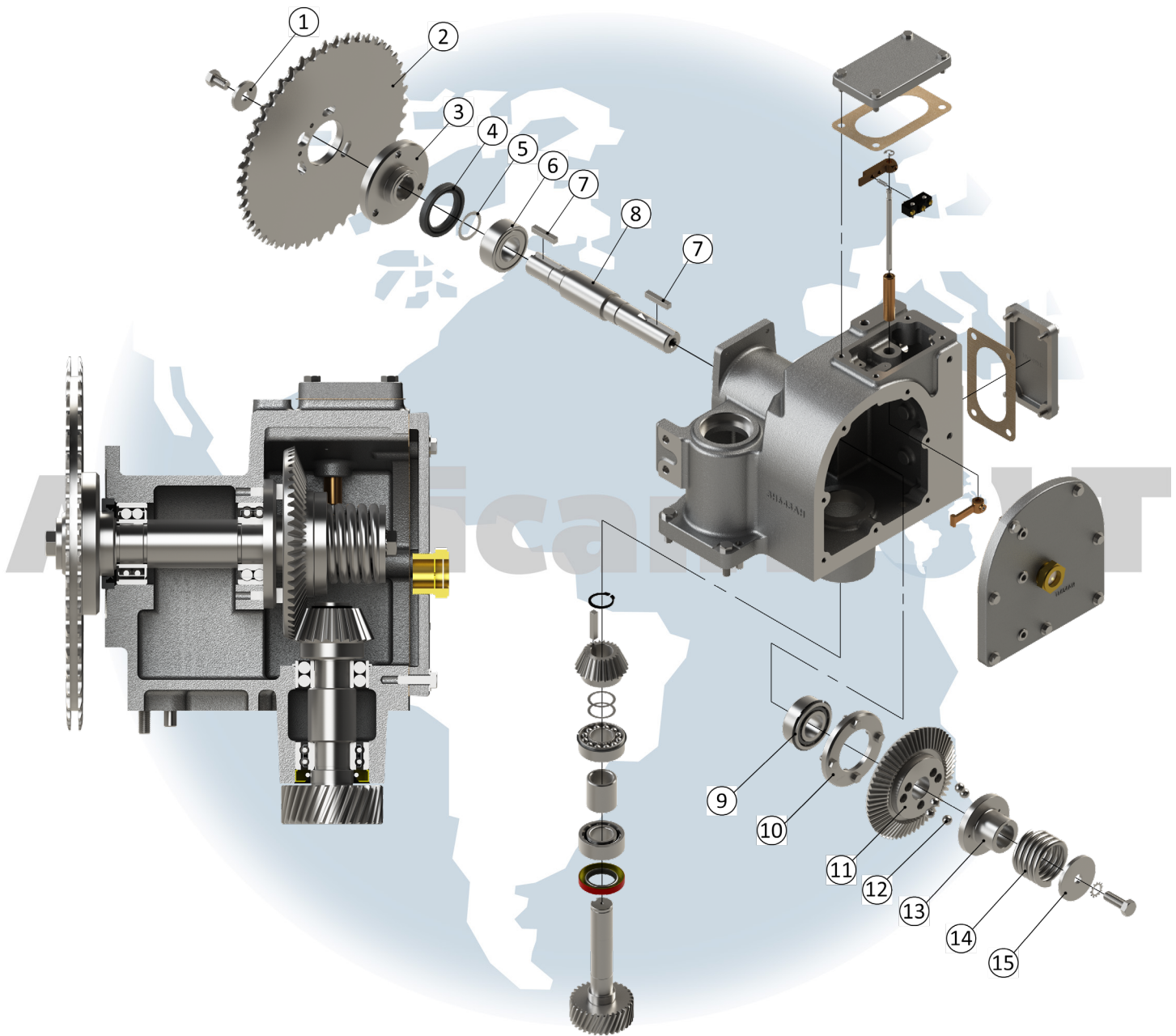
* - Item made-to-order N/A - Item is not currently offered by American Holt

FOR MORE INFORMATION, CONTACT AMERICAN HOLT AT:
781-440-9993 • sales@americanholt.com • www.americanholt.com

61H and 62H Seamers

AFTER MARKET PARTS FOR:

FEED DRIVE PART 1 – FEEDDRIVE-61H-62H-ASSYAH



NOTICE: All parts offered by American Holt are manufactured by or for American Holt and not by or for the Original Equipment Manufacturer. Part numbers shown that are those of the Original Equipment Manufacturer, if any, are used for reference purposes only. American Holt is an independent supplier of quality replacement parts having no affiliation with any Original Equipment Manufacturer. All prices are subject to change without notice. Copyright ©2019 American Holt Corp. All rights reserved.

IN-STOCK AND READY TO SHIP.

FEED DRIVE PART 1 – FEEDDRIVE-61H-62H-ASSYAH

| ITEM NO. | PART NO. | DESCRIPTION | QTY |
|----------|------------------------|--|-----|
| 1 | 45L616AH | Washer 0.65 X 2.00 X 0.31 | 1 |
| 2 | 20S824AH | Feed Sprocket 1.003P | 1 |
| | *598H654AH (NOT SHOWN) | Feed Sprocket Cover | 1 |
| N/A | 8H654AH | Feed Chain Guard | 1 |
| N/A | 571H643AH | Feed Sprocket Cover Support | 1 |
| N/A | 599H654AH | Feed Sprocket Side Cover | 1 |
| 3 | 2L824AH | Feed Sprocket Hub | 1 |
| 4 | 2L815AH | Oil Seal 2.500 X 3.500 X 0.500 | 1 |
| 5 | 52L816-32AH | Seaming Spindle Shim - 0.032 Thick | 1 |
| 6 | 9L616AH | Ball Bearing 1.5748 X 3.1496 X 1.1875 | 1 |
| 7 | 2L647AH | Key 0.3750 SQ. X 1.9688 | 2 |
| 8 | 7L844AH | Feed Sprocket Shaft (INCLUDES HARDWARE) | 1 |
| 9 | 6L816AH | Ball Bearing 1.5748 X 3.1496 X 1.1875 | 1 |
| 10 | 8L817AH | Feed Bevel Gear Bearing Retainer (INCLUDES HARDWARE) | 1 |
| 11 | 12L823AH | Feed Bevel Gear 60T 8P | 1 |
| 12 | 48L616AH | Steel Ball 0.62D (HARDENED) | 5 |
| 13 | 1L897AH | Feed Safety Clutch Hub | 1 |
| 14 | 3L840AH | Feed Safety Clutch Spring | 1 |
| 15 | 12L816AH | Washer 0.6562 X 3.0000 X 0.2500 | 1 |

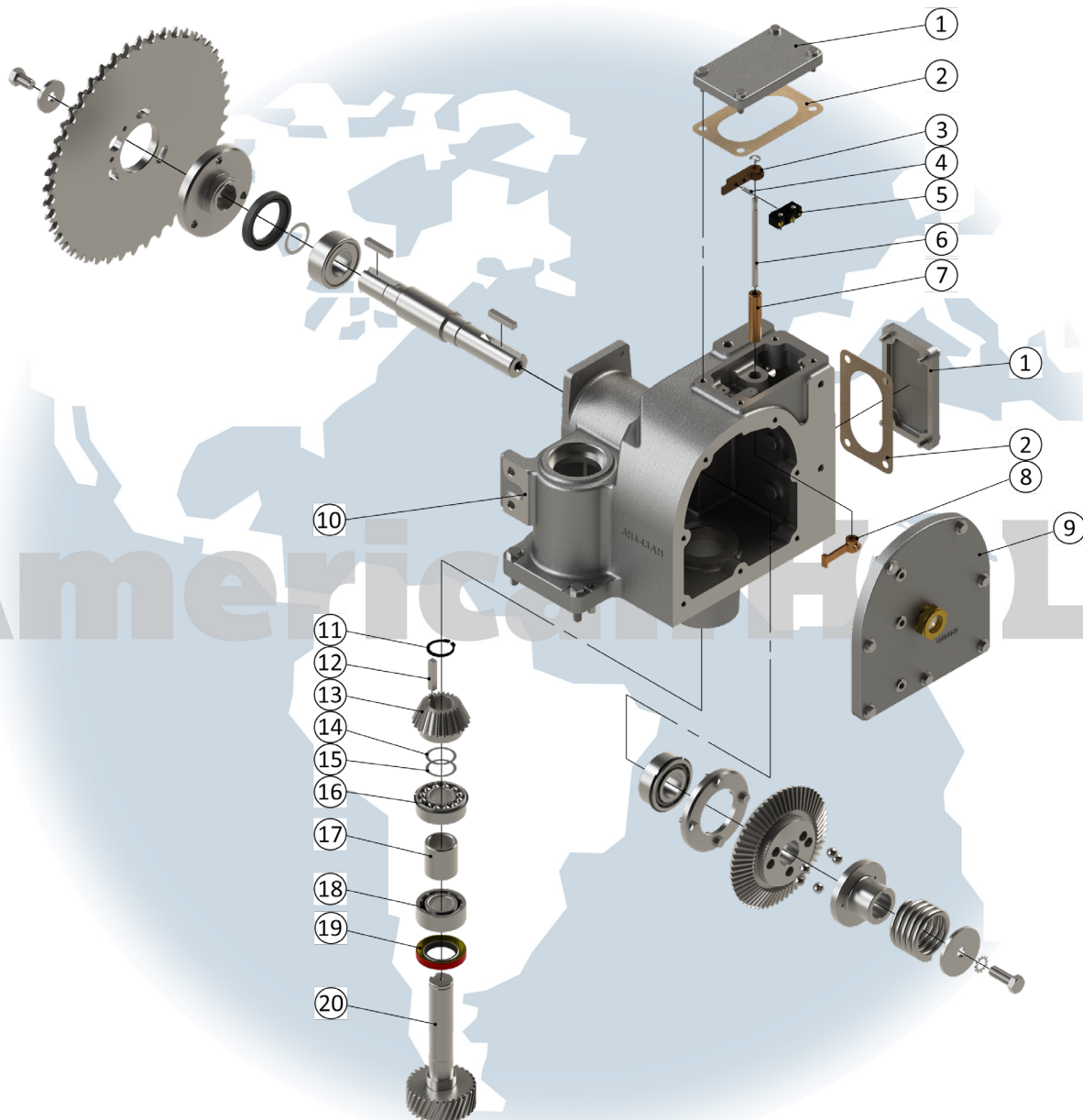
* - Item made-to-order N/A - Item is not currently offered by American Holt

FOR MORE INFORMATION, CONTACT AMERICAN HOLT AT:
781-440-9993 • sales@americanholt.com • www.americanholt.com

61H and 62H Seamers

AFTER MARKET PARTS FOR:

FEED DRIVE PART 2 – FEEDDRIVE-61H-62H-ASSYAH



NOTICE: All parts offered by American Holt are manufactured by or for American Holt and not by or for the Original Equipment Manufacturer. Part numbers shown that are those of the Original Equipment Manufacturer, if any, are used for reference purposes only. American Holt is an independent supplier of quality replacement parts having no affiliation with any Original Equipment Manufacturer. All prices are subject to change without notice. Copyright ©2019 American Holt Corp. All rights reserved.

FEED DRIVE PART 2 – FEEDDRIVE-61H-62H-ASSYAH

| ITEM NO. | PART NO. | DESCRIPTION | QTY |
|----------|-----------------------|--|-----|
| 1 | 2H654AH | Feed Drive Case Switch Cover | 2 |
| 2 | 21H615AH | Gasket | 2 |
| 3 | 3L846AH | Switch Spring Lever (INCLUDES HARDWARE) | 1 |
| 4 | 19L640AH | Switch Spring SS | 1 |
| 5 | 15L633AH | Limit Switch | 1 |
| 6 | 8L844AH | Switch Lever Shaft | 1 |
| 6.1 | 27L617AH | Snap Ring 0.375 Shaft | 1 |
| 7 | 13L816AH | Oilite Bushing 0.750 X 3.1875 | 1 |
| N/A | 134S833AH | Cord Connector | 1 |
| | 228S833AH (NOT SHOWN) | STR Female Plug 3 Pole | 1 |
| 8 | 2L846AH | Switch Lever (INCLUDES HARDWARE) | 1 |
| 9 | 1H654AH | Feed Drive Case Cover (INCLUDES HARWARE) | 1 |
| 9.1 | 23H615AH | Gasket | 1 |
| 9.2 | 115L614AH | Liquid Level Sight Plug 1.250 P.T.F. | 1 |
| 10 | *3H643AH | Feed Drive Case (INCLUDES HARDWARE) | 1 |
| 11 | 2H617AH | Snap Ring - Beveled | 1 |
| 12 | 2L647AH | Key 0.3750 SQ. X 1.9688 | 1 |
| 13 | 11L823AH | Feed Bevel Pinion 24T 8P | 1 |
| 14 | 114L816-3AH | Shim Washer 0.003 Thick | 2 |
| 15 | 114L816-5AH | Shim Washer 0.005 Thick | 2 |
| 16 | 8L816AH | Ball Bearing 1.3780 X 2.8346 X 1.0625 | 1 |
| 17 | 4H653AH | Feed Drive Pinion Shaft Spacer | 1 |
| 18 | 27L816AH | Ball Bearing 1.3780 X 2.8346 X 1.0625 | 1 |
| 19 | 2H615AH | Oil Seal 1.6875 X 2.8390 X 0.4690 | 1 |
| 20 | 5H623AH | Feed Drive Pinion/Shaft 32T 9P RH | 1 |

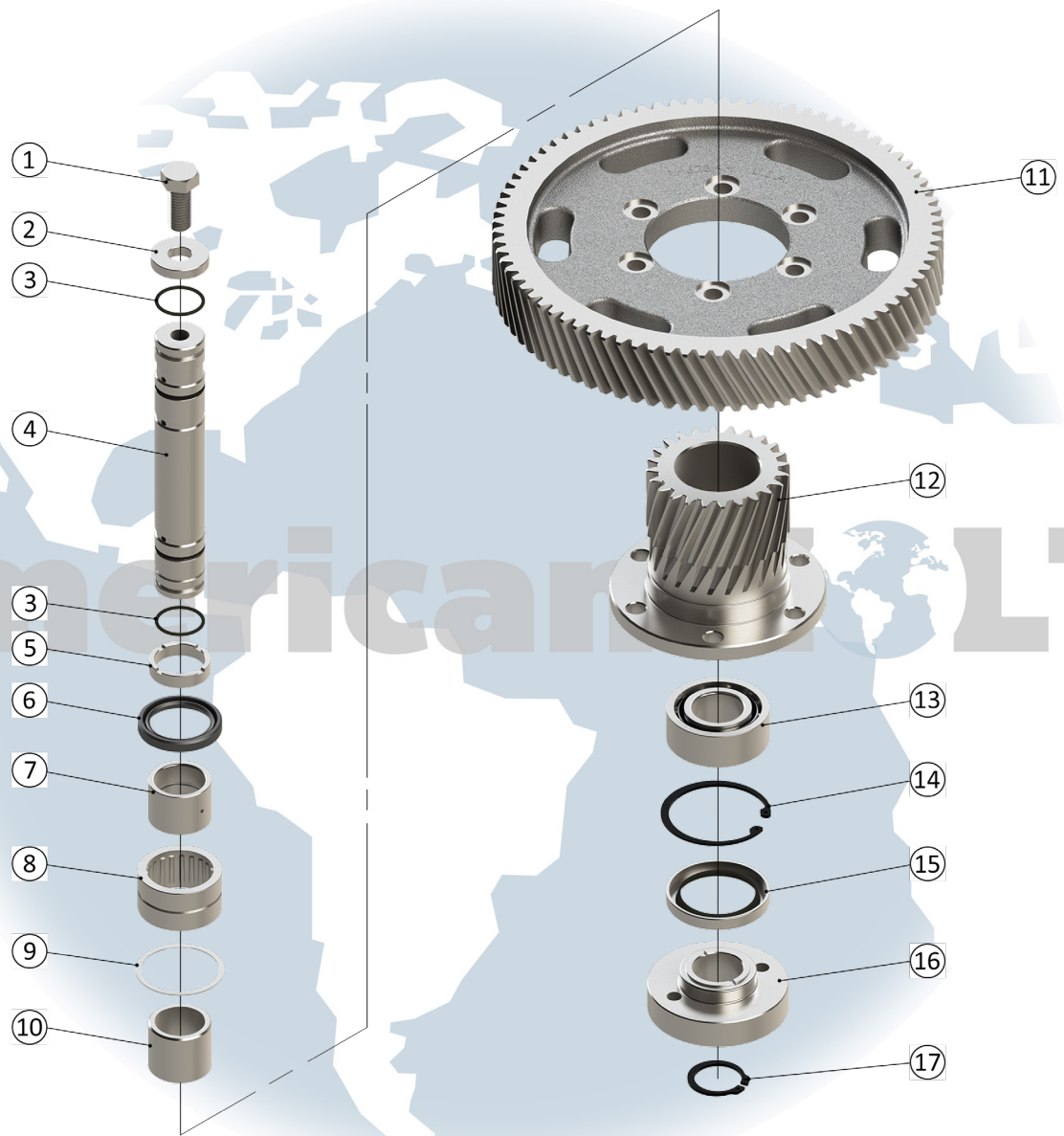
* - Item made-to-order N/A - Item is not currently offered by American Holt

FOR MORE INFORMATION, CONTACT AMERICAN HOLT AT:
 781-440-9993 • sales@americanholt.com • www.americanholt.com

61H and 62H Seamers

AFTER MARKET PARTS FOR:

FEED GEARING PART 1



NOTICE: All parts offered by American Holt are manufactured by or for American Holt and not by or for the Original Equipment Manufacturer. Part numbers shown that are those of the Original Equipment Manufacturer, if any, are used for reference purposes only. American Holt is an independent supplier of quality replacement parts having no affiliation with any Original Equipment Manufacturer. All prices are subject to change without notice. Copyright ©2019 American Holt Corp. All rights reserved.

IN-STOCK AND READY TO SHIP.

FEED GEARING PART 1

| ITEM NO. | PART NO. | DESCRIPTION | QTY |
|----------|----------------------------|---|-----|
| 1 | ZZ-HHBOLT-SS-0.625-11X1.50 | Screw | 1 |
| 2 | 7H616AH | Washer | 1 |
| 3 | 8H615AH | O-Ring 1.187 X 1.375 X 0.0937 | 2 |
| 4 | 5H644AH | Intermediate Pinion Shaft (INCLUDES HARDWARE) | 1 |
| 4.1 | 8H615AH | O-Ring 1.187 X 1.375 X 0.0937 | 2 |
| 5 | 3H653AH | Intermediate Pinion Seal Spacer | 1 |
| 6 | 3H615AH | Oil Seal 1.6875 X 2.3125 X 0.3125 | 1 |
| 7 | 3H616AH | Inner Race 1.375 X 1.750 X 1.260 | 1 |
| 8 | 100L816AH | Roller Bearing 1.750 X 2.3125 X 1.250 | 1 |
| 9 | 12H617AH | Snap Ring 2.312 Bore | 1 |
| 10 | 2H653AH | Intermediate Pinion Bearing Spacer | 1 |
| 11 | 1H623AH | Intermediate Gear 81T 7P LH | 1 |
| 12 | 2H623AH | Intermediate Pinion 24T 7P RH | 1 |
| 13 | 27L816AH | Ball Bearing 1.3780 X 2.8346 X 1.0625 | 1 |
| 14 | 13L817AH | Snap Ring - Beveled 2.834 Bore | 1 |
| 15 | 4H615AH | Oil Seal | 1 |
| 16 | 1H653AH | Intermediate Pinion Shaft Flange | 1 |
| 17 | 1H617AH | Snap Ring 1.375 Shaft | 1 |
| | 1H669AH (NOT SHOWN) | Feed Chain Return Support | 2 |
| | 2H669AH (NOT SHOWN) | Feed Chain Return Stripper | 2 |
| | 7H653AH (NOT SHOWN) | Feed Chain Return Support Spacer | 2 |
| N/A | 6H654AH | Feed Chain Cover Plate | 1 |

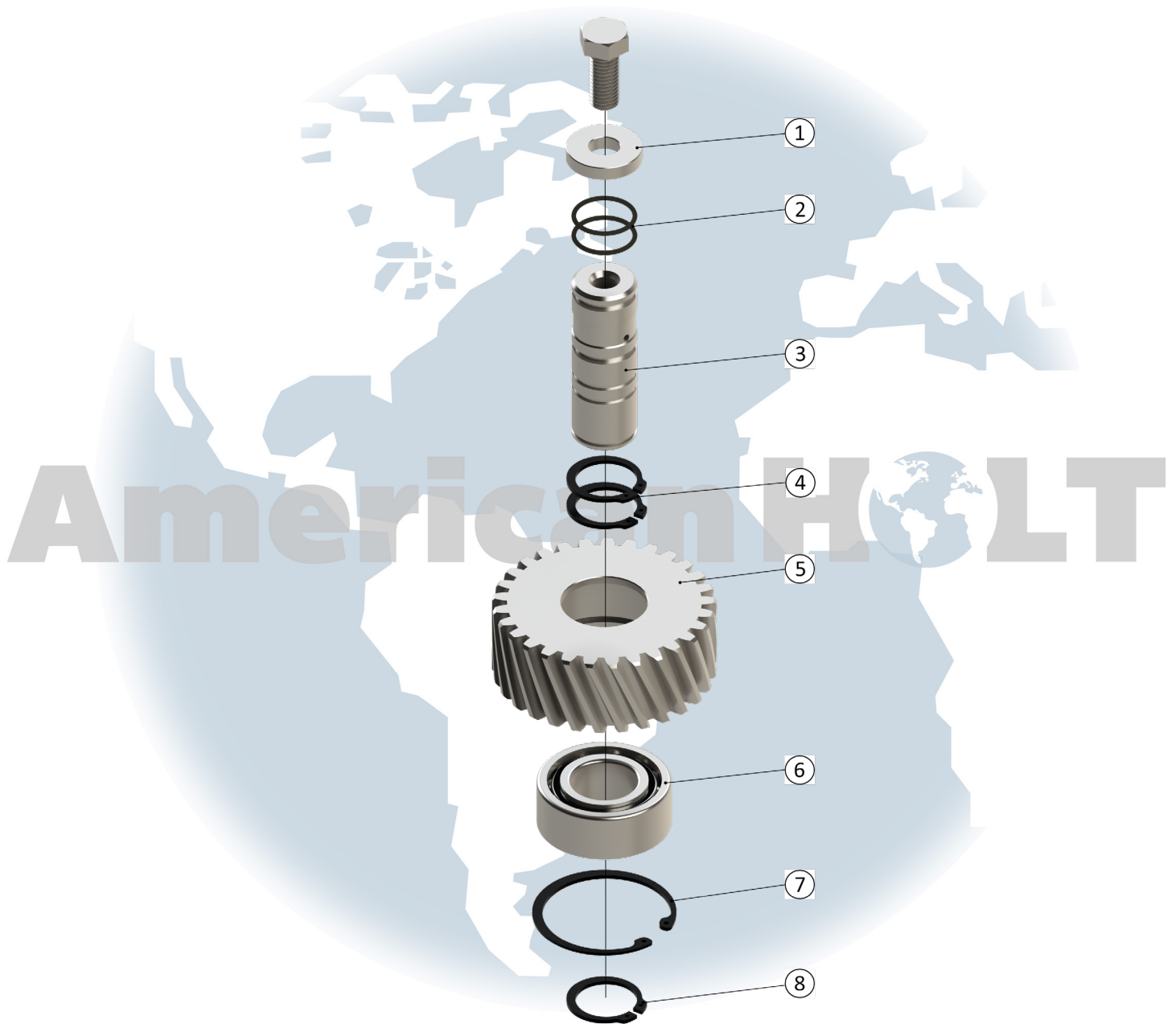
* - Item made-to-order N/A - Item is not currently offered by American Holt

FOR MORE INFORMATION, CONTACT AMERICAN HOLT AT:
781-440-9993 • sales@americanholt.com • www.americanholt.com

61H and 62H Seamers

AFTER MARKET PARTS FOR:

FEED GEARING PART 2



NOTICE: All parts offered by American Holt are manufactured by or for American Holt and not by or for the Original Equipment Manufacturer. Part numbers shown that are those of the Original Equipment Manufacturer, if any, are used for reference purposes only. American Holt is an independent supplier of quality replacement parts having no affiliation with any Original Equipment Manufacturer. All prices are subject to change without notice. Copyright ©2019 American Holt Corp. All rights reserved.

IN-STOCK AND READY TO SHIP.

FEED GEARING PART 2

| ITEM NO. | PART NO. | DESCRIPTION | QTY |
|----------|----------|---|-----|
| 1 | 7H616AH | Washer | 1 |
| 2 | 8H615AH | O-Ring 1.187 X 1.375 X 0.937 | 2 |
| 3 | 6H644AH | Discharge Idler Shaft (INCLUDES HARDWARE) | 1 |
| 4 | 1H617AH | Snap Ring 1.375 Shaft | 2 |
| 5 | 6H623AH | Discharge Idler gear 29T 7P LH | 1 |
| 6 | 27L816AH | Ball Bearing 1.3780 X 2.8346 X 1.0625 | 1 |
| 7 | 13L817AH | Snap Ring - Beveled 2.834 Bore | 1 |
| 8 | 2H617AH | Snap Ring - Beveled 1.375 Shaft | 1 |
| N/A | 3H654AH | Discharge Idler Gear Cover | 1 |

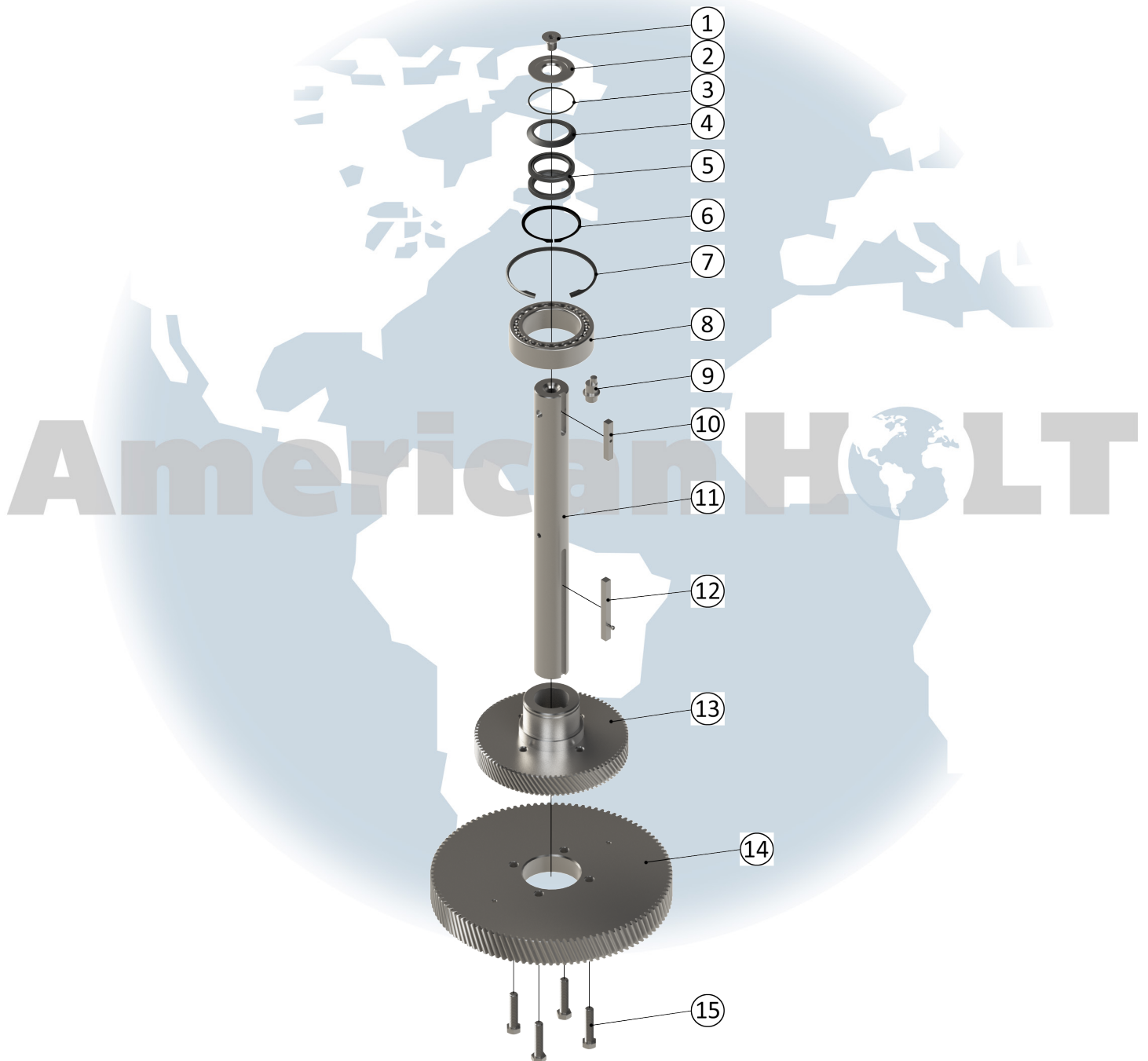
* - Item made-to-order N/A - Item is not currently offered by American Holt

FOR MORE INFORMATION, CONTACT AMERICAN HOLT AT:
781-440-9993 • sales@americanholt.com • www.americanholt.com

61H and 62H Seamers

AFTER MARKET PARTS FOR:

FEED TURRET



NOTICE: All parts offered by American Holt are manufactured by or for American Holt and not by or for the Original Equipment Manufacturer. Part numbers shown that are those of the Original Equipment Manufacturer, if any, are used for reference purposes only. American Holt is an independent supplier of quality replacement parts having no affiliation with any Original Equipment Manufacturer. All prices are subject to change without notice. Copyright ©2019 American Holt Corp. All rights reserved.

IN-STOCK AND READY TO SHIP.

FEED TURRET

| ITEM NO. | PART NO. | DESCRIPTION | QTY |
|----------|----------------------------|--|-----|
| 1 | 36H626AH | Retainer Screw | 1 |
| 2 | 44H617AH | O-Ring Retainer | 1 |
| 3 | 54H615AH | O-Ring 3.000 X 3.250 X 0.125 | 1 |
| N/A | 1H663AH | Feed Turret Hub | 1 |
| 4 | 7H615AH | Oil Slinger | 1 |
| 5 | 5H615AH | Oil Seal | 2 |
| 6 | 5P917AH | Snap Ring 3.937 Shaft | 1 |
| 7 | 5H617AH | Snap Ring - Beveled | 1 |
| 8 | 53P916AH | Ball Bearing | 1 |
| 9 | 4L828AH | Feed Turret Eccentric Adjustment Pin | 1 |
| 10 | 2H647AH | Feed Turret Hub Key | 1 |
| 11 | 4H644AH | Feed Turret Shaft | 1 |
| 12 | 1H647AH | Feed Turret Hub/Gear Key (INCLUDES HARDWARE) | 1 |
| 13 | 4H623AH | Feed Turret Hub/Gear 90T 9P LH | 1 |
| 14 | 3H623AH | Feed Turret Gear 108T 7P LH | 1 |
| 15 | ZZ-HHBOLT-SS-0.625-11X2.75 | Screw | 4 |

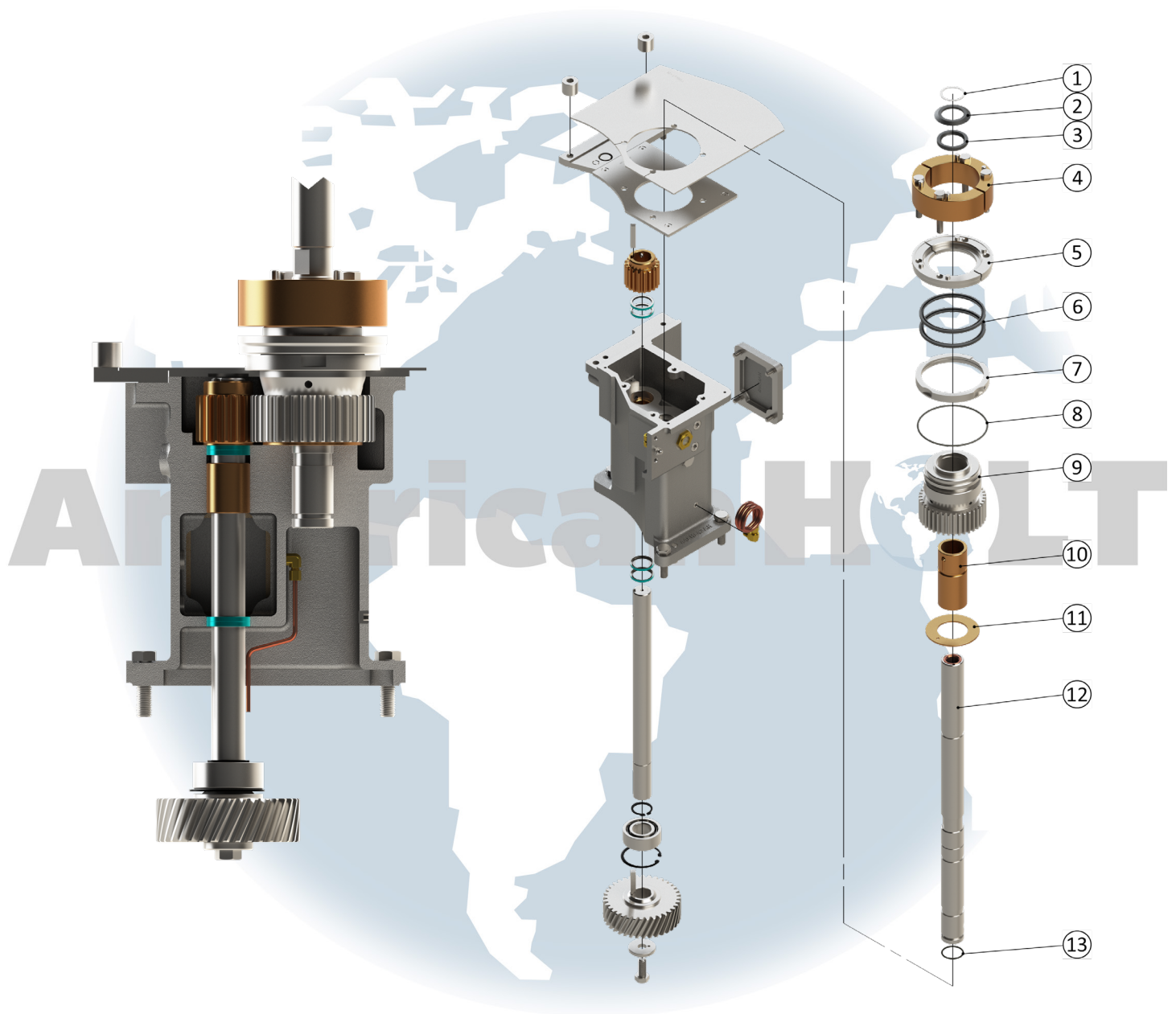
* - Item made-to-order N/A - Item is not currently offered by American Holt

FOR MORE INFORMATION, CONTACT AMERICAN HOLT AT:
781-440-9993 • sales@americanholt.com • www.americanholt.com

61H and 62H Seamers

AFTER MARKET PARTS FOR:

DISCHARGE TABLE PART 1



NOTICE: All parts offered by American Holt are manufactured by or for American Holt and not by or for the Original Equipment Manufacturer. Part numbers shown that are those of the Original Equipment Manufacturer, if any, are used for reference purposes only. American Holt is an independent supplier of quality replacement parts having no affiliation with any Original Equipment Manufacturer. All prices are subject to change without notice. Copyright ©2019 American Holt Corp. All rights reserved.

IN-STOCK AND READY TO SHIP.

DISCHARGE TABLE PART 1

| ITEM NO. | PART NO. | DESCRIPTION | QTY |
|----------|----------|---|-----|
| 1 | 23P417AH | Retaining Ring 1.6875 Shaft | 1 |
| 2 | 11H615AH | Oil Slinger 1.6875 X 2.7500 X 0.1875 | 1 |
| 3 | 3H615AH | Oil Seal 1.6875 X 2.3125 X 0.3125 | 1 |
| 4 | 5H653AH | Discharge Turret Spacer - Split (INCLUDES HARDWARE) | 1 |
| 5 | 48H617AH | Discharge Turret Clamp | 1 |
| 6 | 62H615AH | Oil Seal 4.2500 X 4.8750 X 0.2500 | 2 |
| 7 | 47H617AH | Discharge Table Seal Retainer | 1 |
| 8 | 63H615AH | O-Ring 5.0000 X 5.2500 X 0.1250 | 1 |
| 9 | 79H623AH | Discharge Turret Gear 38T 8P | 1 |
| 10 | 2H616AH | Bearing | 1 |
| 11 | 6H616AH | Washer 2.250 X 4.000 X 0.125 | 1 |
| 12 | 3H644AH | Column Discharge (INCLUDES HARDWARE) | 1 |
| 12.1 | 69L626AH | Threaded Insert | 1 |
| 13 | 17L615AH | O-Ring | 1 |

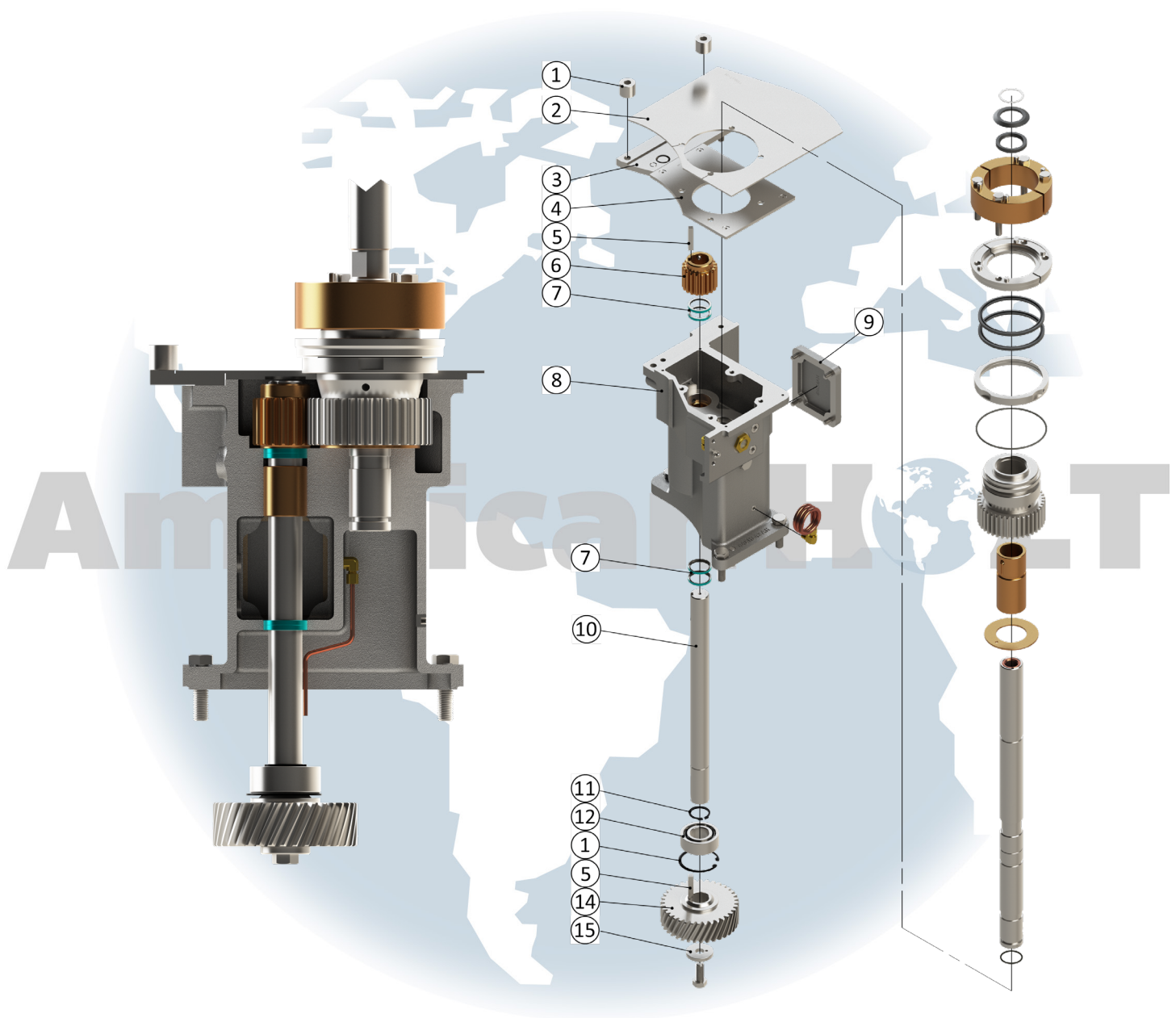
* - Item made-to-order N/A - Item is not currently offered by American Holt

FOR MORE INFORMATION, CONTACT AMERICAN HOLT AT:
781-440-9993 • sales@americanholt.com • www.americanholt.com

61H and 62H Seamers

AFTER MARKET PARTS FOR:

DISCHARGE TABLE PART 2



NOTICE: All parts offered by American Holt are manufactured by or for American Holt and not by or for the Original Equipment Manufacturer. Part numbers shown that are those of the Original Equipment Manufacturer, if any, are used for reference purposes only. American Holt is an independent supplier of quality replacement parts having no affiliation with any Original Equipment Manufacturer. All prices are subject to change without notice. Copyright ©2019 American Holt Corp. All rights reserved.

IN-STOCK AND READY TO SHIP.

DISCHARGE TABLE PART 2

| ITEM NO. | PART NO. | DESCRIPTION | QTY |
|----------|-----------------------|--|-----|
| 1 | 48L653AH | Discharge Table Rail Spacer 0.531 X 1.187 X 1.000 | 2 |
| 2 | 91H669AH | Discharge Table Wear Plate | 1 |
| 3 | 3H669AH | Discharge Table Rail Support | 1 |
| 4 | 301H669AH | Discharge Table Filler Plate | 1 |
| 5 | 2L647AH | Key 0.3750 SQ. X 1.9687 | 2 |
| 6 | 76H623AH | Discharge Turret Pinion 19T 8P (INCLUDES HARDWARE) | 1 |
| 7 | 1H615AH | Oil Seal 1.3750 X 1.7500 X 0.1875 | 4 |
| 8 | 448H643AH | Discharge Table (INCLUDES HARDWARE) | 1 |
| 8.1 | 1L614AH | Sight Glass | 1 |
| 8.2 | 11L615AH | O-Ring 0.5625 X 0.7500 X 0.0937 | 2 |
| 8.3 | 24H615AH | Gasket | 1 |
| 8.4 | 1H616AH | Bushing 1.3750 X 1.7500 X 2.0000 | 1 |
| 8.5 | ZZ-448H643AH-COILVENT | Coil Tube with Fitting (62H ONLY) | 1 |
| 9 | 4H654AH | Discharge Table Side Cover | 1 |
| 10 | 7H644AH | Discharge Intermediate Shaft (INCLUDES HARDWARE) | 1 |
| 11 | 1H617AH | Snap Ring 1.375 Shaft | 1 |
| 12 | 27L816AH | Ball Bearing 1.3780 X 2.8346 X 1.0625 | 1 |
| 13 | 13L817AH | Snap Ring - Beveled 2.834 Bore | 1 |
| 14 | 7H623AH | Discharge Intermediate Gear 36T 7P RH | 1 |
| 15 | 30H616AH | Washer with Pin Hole | 1 |

* - Item made-to-order N/A - Item is not currently offered by American Holt

FOR MORE INFORMATION, CONTACT AMERICAN HOLT AT:
781-440-9993 • sales@americanholt.com • www.americanholt.com

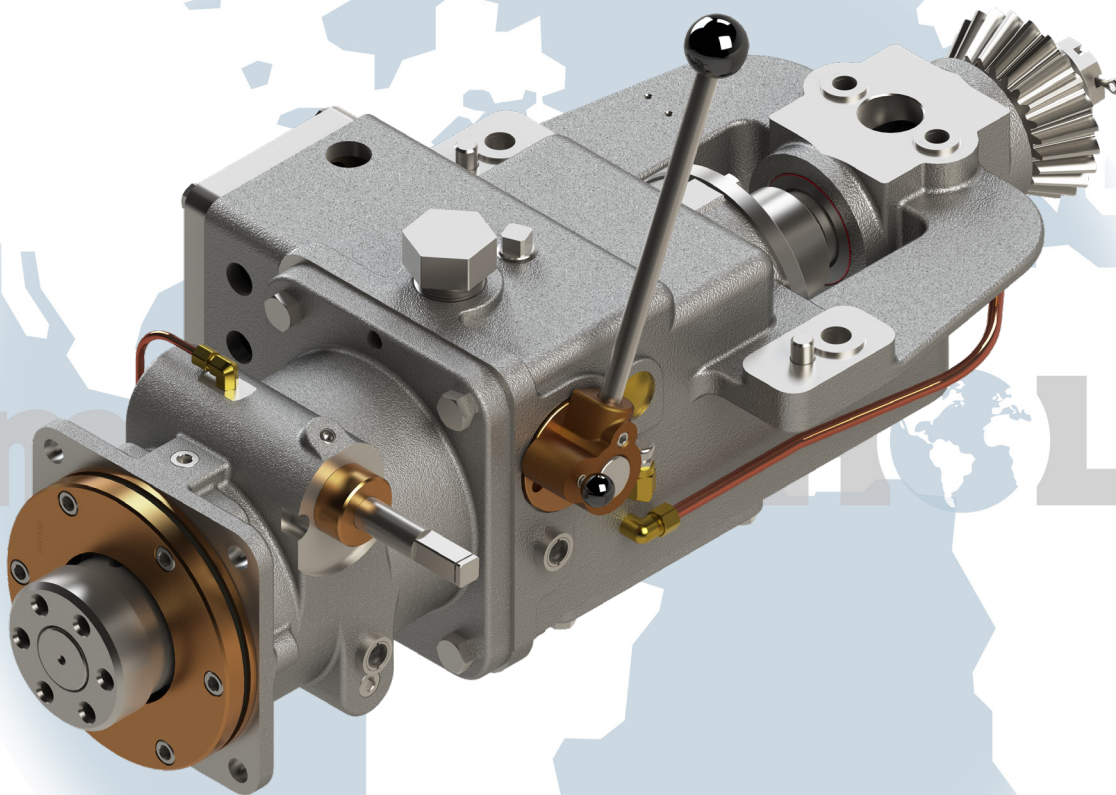
61H and 62H Seamers

AFTER MARKET PARTS FOR:

IN-MOTION TIMER FILLER DRIVE - 1387576-MAH

Standard PN is for counter-clockwise orientation.

Please reference PN 1387576-M-CWAH if clockwise is needed.

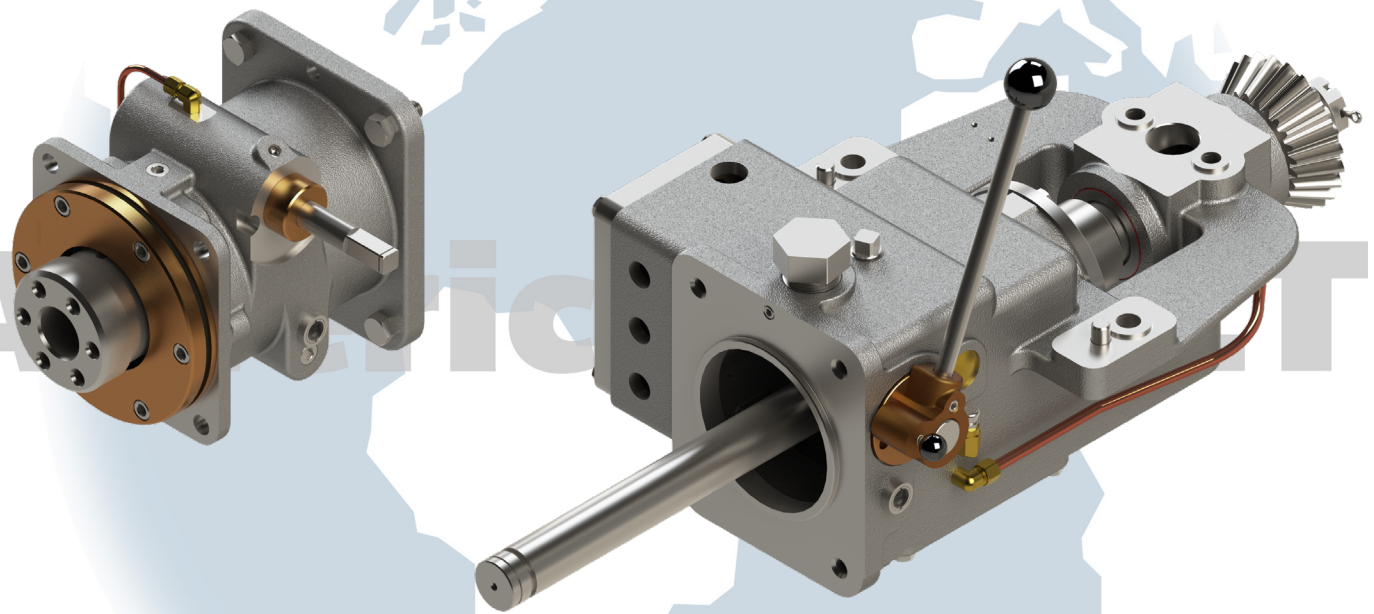


NOTICE: All parts offered by American Holt are manufactured by or for American Holt and not by or for the Original Equipment Manufacturer. Part numbers shown that are those of the Original Equipment Manufacturer, if any, are used for reference purposes only. American Holt is an independent supplier of quality replacement parts having no affiliation with any Original Equipment Manufacturer. All prices are subject to change without notice. Copyright ©2019 American Holt Corp. All rights reserved.

IN-STOCK AND READY TO SHIP.

American HOLT
engineered savings®

IN-MOTION TIMER FILLER DRIVE - 1387576-MAH



* - Item made-to-order N/A - Item is not currently offered by American Holt

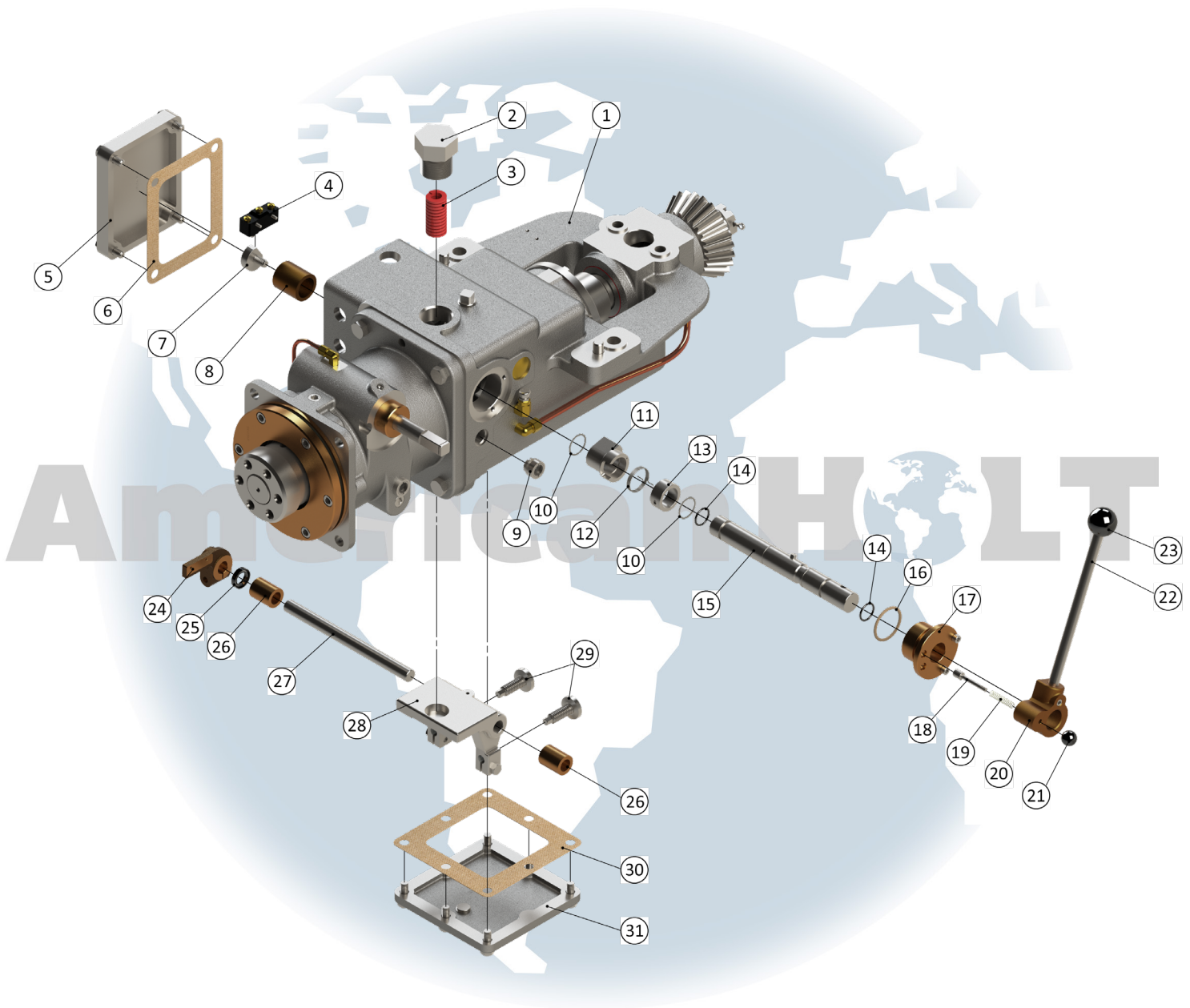
FOR MORE INFORMATION, CONTACT AMERICAN HOLT AT:
781-440-9993 • sales@americanholt.com • www.americanholt.com

SALES@AMERICANHOLT.COM • 781-440-9993 **19** WWW.AMERICANHOLT.COM • REV F 7/1/23

61H and 62H Seamers

AFTER MARKET PARTS FOR:

IN-MOTION TIMER FILLER DRIVE - 1387576-MAH (Filler Drive Part 1)



NOTICE: All parts offered by American Holt are manufactured by or for American Holt and not by or for the Original Equipment Manufacturer. Part numbers shown that are those of the Original Equipment Manufacturer, if any, are used for reference purposes only. American Holt is an independent supplier of quality replacement parts having no affiliation with any Original Equipment Manufacturer. All prices are subject to change without notice. Copyright ©2019 American Holt Corp. All rights reserved.

IN-STOCK AND READY TO SHIP.

IN-MOTION TIMER FILLER DRIVE - 1387576-MAH (FILLER DRIVE PART 1)

| ITEM NO. | PART NO. | DESCRIPTION | QTY |
|----------|-----------|--|-----|
| 1 | 134H643AH | Filler Drive Bracket (INCLUDES HARDWARE) | 1 |
| 1.1 | 41L814AH | Air Vent | 1 |
| 2 | 40L826AH | Filler Drive Spring Adjustment Screw | 1 |
| 3 | 18L840AH | Filler Drive Spring | 1 |
| 4 | 15L633AH | Limit Switch | 1 |
| 5 | 66H654AH | Switch Box Cover | 1 |
| 6 | 54L815AH | Gasket | 1 |
| 7 | 45L846AH | Micro-Switch Trip | 1 |
| 8 | 43P916AH | Oilite Bearing | 1 |
| 9 | 58L614AH | Oil Gauge 0.6250 | 1 |
| 10 | 6P517AH | Spirolox Ring 1" Shaft | 2 |
| 11 | 31L897AH | Filler Drive Trip Disc | 1 |
| 12 | 22L840AH | Trip Disc Torsion Spring | 1 |
| 13 | 117L853AH | Set Collar 1.00 X 1.38 X 0.625 (INCLUDES HARDWARE) | 1 |
| 14 | 31L815AH | O-Ring 0.7500 X 0.9375 X 0.0937 | 2 |
| 15 | 93L844AH | Filler Drive Trip Shaft (INCLUDES HARDWARE) | 1 |
| 16 | 12H615AH | O-Ring 1.500 X 1.750 X 0.125 | 1 |
| 17 | 130L816AH | Trip Shaft Bushing | 1 |
| 18 | 25L828AH | Locator Pin | 1 |
| 19 | 18L640AH | Locator Pin Spring SS | 1 |
| 20 | 102L843AH | Filler Drive Control Lever | 1 |
| 21 | 97L616AH | Ball Handle | 1 |
| 22 | 54L844AH | Filler Drive Trip Shaft Handle | 1 |
| 23 | 29L854AH | Handcrank Carrier Knob | 1 |
| 24 | 46L846AH | Micro-Switch Trip Lever (INCLUDES HARDWARE) | 1 |
| 25 | 43L815AH | Oil Seal | 1 |
| 26 | 89L816AH | Oilite Bushing | 2 |
| 27 | 53L844AH | Filler Drive Clutch Lever Shaft | 1 |
| 28 | 11L897AH | Filler Drive Clutch Lever (INCLUDES HARDWARE) | 1 |
| 29 | 39L826AH | Filler Drive Clutch Screw | 2 |
| 30 | 53L815AH | Gasket | 1 |
| 31 | 201L854AH | Filler Drive Bracket Access Cover | 1 |

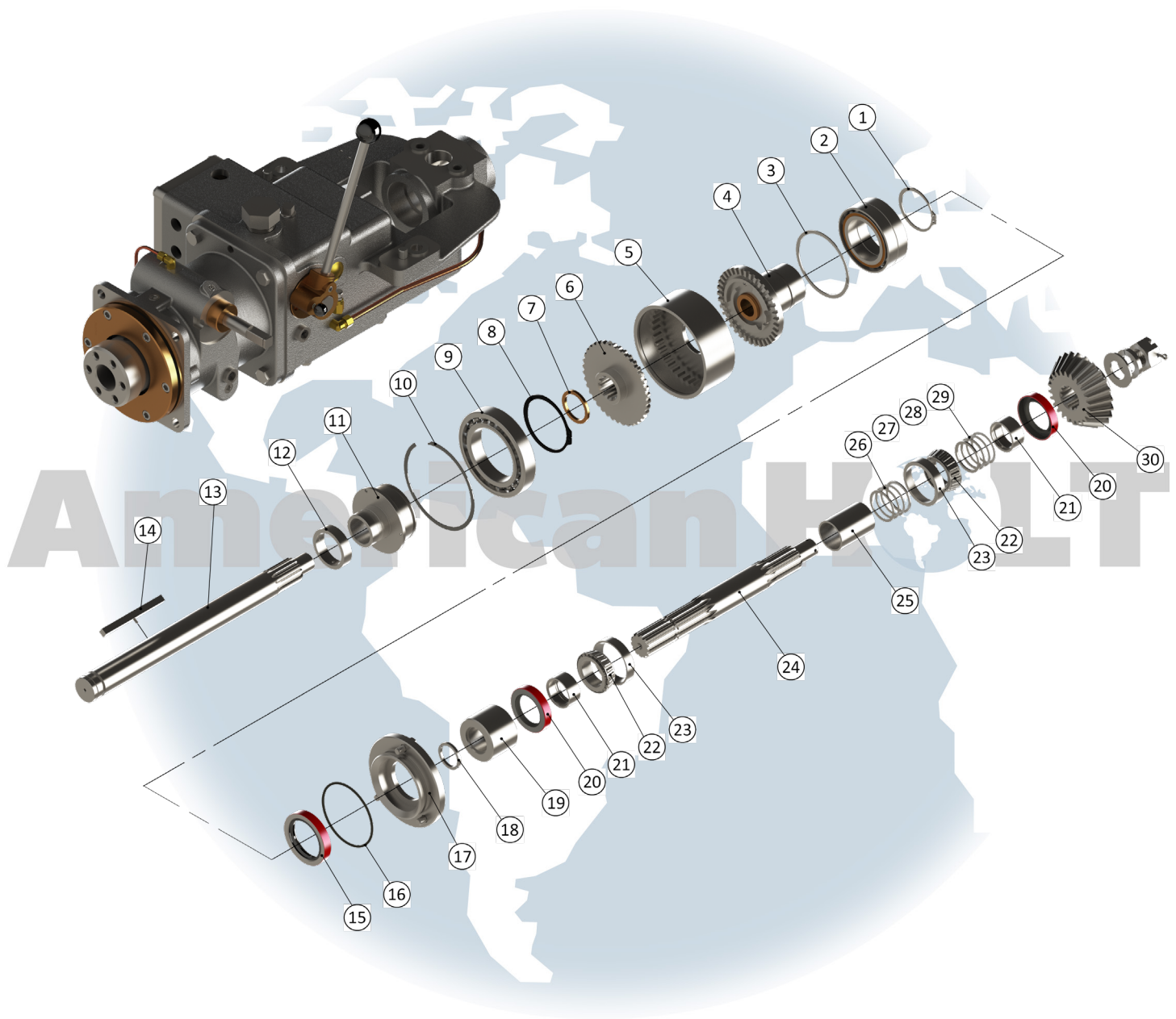
* - Item made-to-order N/A - Item is not currently offered by American Holt

FOR MORE INFORMATION, CONTACT AMERICAN HOLT AT:
781-440-9993 • sales@americanholt.com • www.americanholt.com

61H and 62H Seamers

AFTER MARKET PARTS FOR:

IN-MOTION TIMER FILLER DRIVE - 1387576-MAH (Filler Drive Part 2)



NOTICE: All parts offered by American Holt are manufactured by or for American Holt and not by or for the Original Equipment Manufacturer. Part numbers shown that are those of the Original Equipment Manufacturer, if any, are used for reference purposes only. American Holt is an independent supplier of quality replacement parts having no affiliation with any Original Equipment Manufacturer. All prices are subject to change without notice. Copyright ©2019 American Holt Corp. All rights reserved.

IN-STOCK AND READY TO SHIP.

IN-MOTION TIMER FILLER DRIVE - 1387576-MAH (FILLER DRIVE PART 2)

| ITEM NO. | PART NO. | DESCRIPTION | QTY |
|----------|--------------|--|-----|
| 1 | 5L617AH | Retaining Ring 2.375 Shaft | 1 |
| 2 | 88L816AH | Ball Bearing 2.3622 X 3.7402 X 1.4174 | 1 |
| 3 | 48L817AH | Snap Ring | 1 |
| 4 | 27L897AH | Filler Drive Clutch Hub | 1 |
| 4.1 | 98L816AH | Oilite Bushing | 1 |
| 5 | 28L897AH | Filler Driven Clutch Hub 36T 14.5P | 1 |
| 6 | 79L823AH | Filler Drive Intermediate Gear | 1 |
| 7 | 128L816AH | Thrust Washer | 1 |
| 8 | 28L617AH | Retaining Ring | 1 |
| 9 | 126L816AH | Ball Bearing 3.1496 X 4.9213 X 0.8661 | 1 |
| 10 | 53L817AH | Retaining Ring 5.000 Bore | 1 |
| 11 | 29L897AH | Filler Drive Pressure Hub | 1 |
| 12 | 114L853AH | Filler Drive Pressure Hub Collar (INCLUDES HARDWARE) | 1 |
| 13 | 96L844AH | In-Motion Timer Shaft | 1 |
| 14 | 20L847AH | In-Motion Timer Key (INCLUDES HARDWARE) | 1 |
| 15 | 42L815AH | Oil Seal | 1 |
| 16 | 41L815AH | O-Ring 3.500 X 3.750 X 0.125 | 1 |
| 17 | 56L817AH | Bearing Retainer (INCLUDES HARDWARE) | 1 |
| 18 | 60L817AH | Filler Drive Shaft Retainer | 2 |
| 19 | 96H653AH | Intermediate Drive Shaft Collar | 1 |
| 20 | 61L815AH | Oil Seal 1.750 X 2.565 X 0.500 | 2 |
| 21 | 97H653AH | Spacer 1.500 X 1.750 X 0.812 | 2 |
| 22 | 124L816AH | Tapered Roller Bearing Cone 1.500 X 2.5625 X 0.710 | 2 |
| 23 | 125L816AH | Tapered Roller Bearing Cup | 2 |
| 24 | 50H644AH | Filler Drive Intermediate Shaft (INCLUDES HARDWARE) | 1 |
| 24.1 | 134L816AH | Hex Slotted Nut 1-8 NC | 1 |
| 25 | 95H653AH | Spacer 1-17/32 X 1.750 X 2.453 | 1 |
| 26 | 129L816-3AH | Shim 0.003 | 4 |
| 27 | 129L816-5AH | Shim 0.005 | 4 |
| 28 | 129L816-10AH | Shim 0.010 | 4 |
| 29 | 129L816-32AH | Shim 0.032 | 4 |
| 26 | 49H623AH | Filler Drive Pinion | 1 |

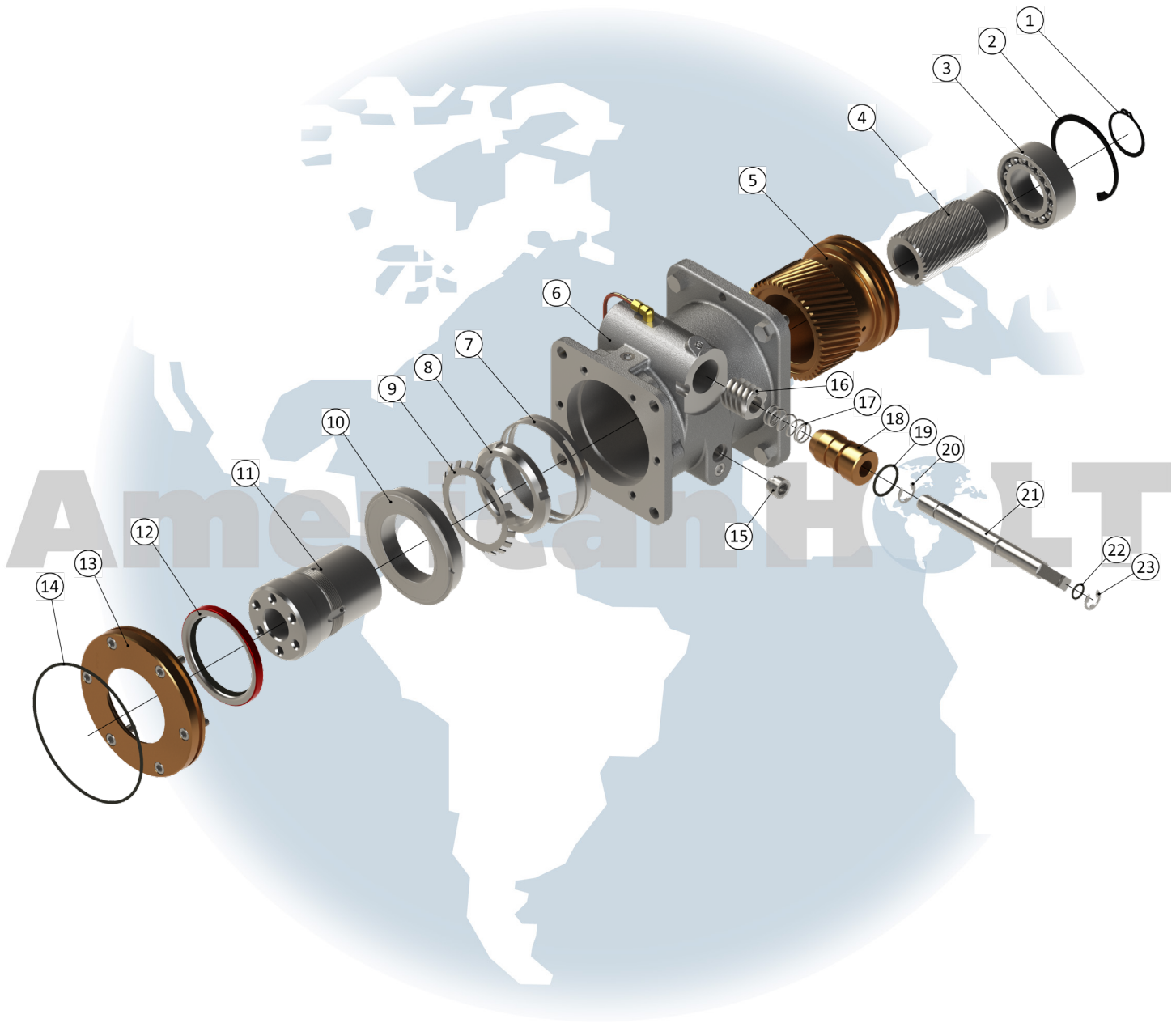
* - Item made-to-order N/A - Item is not currently offered by American Holt

FOR MORE INFORMATION, CONTACT AMERICAN HOLT AT:
781-440-9993 • sales@americanholt.com • www.americanholt.com

61H and 62H Seamers

AFTER MARKET PARTS FOR:

IN-MOTION TIMER FILLER DRIVE - 1387576-MAH (In-Motion Timer - 1387577-MAH)



NOTICE: All parts offered by American Holt are manufactured by or for American Holt and not by or for the Original Equipment Manufacturer. Part numbers shown that are those of the Original Equipment Manufacturer, if any, are used for reference purposes only. American Holt is an independent supplier of quality replacement parts having no affiliation with any Original Equipment Manufacturer. All prices are subject to change without notice. Copyright ©2019 American Holt Corp. All rights reserved.

IN-STOCK AND READY TO SHIP.

IN-MOTION TIMER FILLER DRIVE - 1387576-MAH (IN-MOTION TIMER - 1387577-MAH)

| ITEM NO. | PART NO. | DESCRIPTION | QTY |
|----------|----------------------|---|-----|
| 1 | 29L617AH | Retaining Ring 2" Shaft | 1 |
| 2 | 9L617AH | Retaining Ring 3.544 Bore | 1 |
| 3 | 100L616AH | Ball Bearing 1.9685 X 3.5433 X 1.1875 | 1 |
| 4 | 51L623AH | Drive Sleeve 32T 0.5000P 30deg LH | 1 |
| 5 | 50L623AH | Adjusting Sleeve 45T 10.5P 17deg 45' RH | 1 |
| 6 | 71L643AH | In-Motion Timer Housing (INCLUDES HARDWARE) | 1 |
| 7 | 265L653AH | Spacer 4.50 X 4.71 X 0.75 | 1 |
| 8 | 158L816AH | Bearing Locknut | 1 |
| 9 | 159L816AH | Lockwasher | 1 |
| 10 | 99L616AH | Ball Bearing 3.1496 X 4.9213 X 0.8660 | 1 |
| 11 | 140L623AH | Drive Flange - LH | 1 |
| 12 | 13L615AH | Oil Seal 3.50 X 4.50 X 0.43 | 1 |
| 13 | 30L617AH | Bearing Retainer (INCLUDES HARDWARE) | 1 |
| 14 | 29L815AH | O-Ring 6.250 X 6.500 X 0.125 | 1 |
| 15 | 58L614AH | Oil Gauge 0.6250 | 1 |
| 16 | 53L623AH | Worm 4THD 10P RH | 1 |
| 17 | 3P140AH | Knockout Rod Spring | 1 |
| 18 | 359L616AH | Worm Shaft Bearing | 1 |
| 19 | 97L815AH | O-Ring 1.25 X1.50 X 0.12 | 1 |
| 20 | 2L617AH | Retaining Ring - Nickel Plated 0.750 Shaft | 1 |
| 21 | 65L644AH | Worm Shaft (INCLUDES 608 #13 WOODRUFF KEY) | 1 |
| 22 | 11L615AH | O-Ring 0.5625 X 0.7500 X 0.0937 | 1 |
| | 12L653AH (NOT SHOWN) | Crank Handle | 1 |
| 23 | 1L617AH | Retaining Ring - Nickel Plated | 1 |

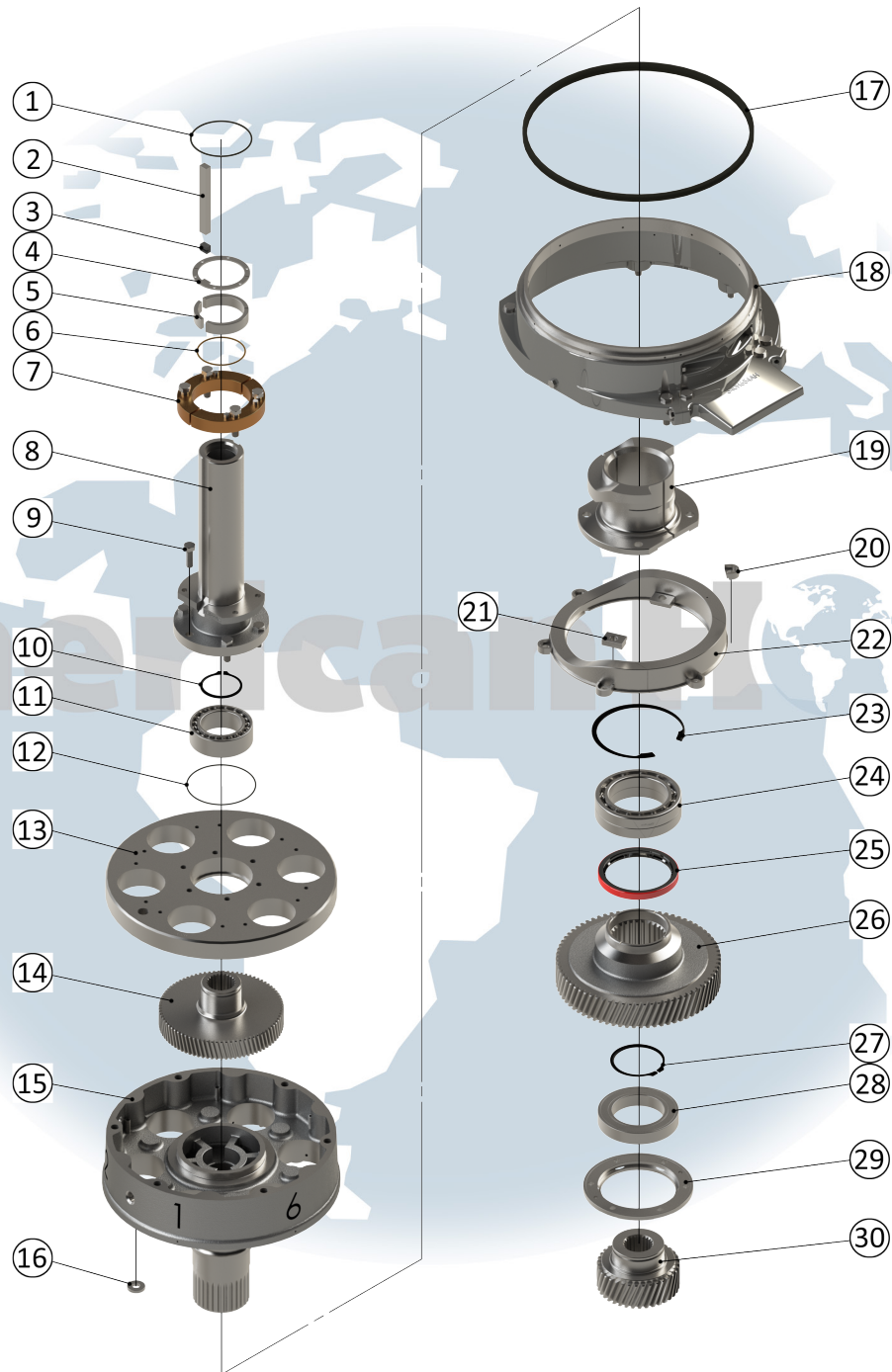
* - Item made-to-order N/A - Item is not currently offered by American Holt

FOR MORE INFORMATION, CONTACT AMERICAN HOLT AT:
781-440-9993 • sales@americanholt.com • www.americanholt.com

61H and 62H Seamers

AFTER MARKET PARTS FOR:

LOWER TURRET



NOTICE: All parts offered by American Holt are manufactured by or for American Holt and not by or for the Original Equipment Manufacturer. Part numbers shown that are those of the Original Equipment Manufacturer, if any, are used for reference purposes only. American Holt is an independent supplier of quality replacement parts having no affiliation with any Original Equipment Manufacturer. All prices are subject to change without notice. Copyright ©2019 American Holt Corp. All rights reserved.

IN-STOCK AND READY TO SHIP.

LOWER TURRET

| ITEM NO. | PART NO. | DESCRIPTION | QTY |
|----------|---------------------------|---|-----|
| 1 | 12L815AH | O-Ring 4.000 X 4.125 X 0.125 | 1 |
| 2 | 3H647AH | Upper Turret Hub Key 0.250 X 0.625 X 5.500 | 1 |
| 3 | 9H615AH | Keyway Seal 0.500 X 0.625 X 0.375 | 1 |
| 4 | 7H617AH | Upper Turret Hub Seal Retainer | 1 |
| 5 | 29H653AH | Upper Turret Hub Set Screw Spacer - 3 Sections | 1 |
| 6 | 24L815AH | O-Ring 3.1250 X 3.3750 X 0.1250 | 1 |
| | 1H626AH (NOT SHOWN) | Upper Turret Hub Set Screw | 3 |
| | 7H628AH (NOT SHOWN) | Dowel Pin 0.499 X 0.500 X 1.000 | 4 |
| 7 | 8H653AH | Seaming Turret Spacer - Split (INCLUDES HARDWARE) | 1 |
| 8 | 8H644AH | Lower Turret Hollow Shaft | 1 |
| N/A | 1H641AH | Upper Turret Hub | 1 |
| 9 | ZZ-HHBOLT-SS-0.50-13X1.50 | Screw | 6 |
| 10 | 6L617AH | Retaining Ring - Beveled 2.750 Shaft | 1 |
| 11 | 8H616AH | Ball Bearing 2.7559 X 4.3307 X 1.4173 | 1 |
| 12 | 61H615AH | O-Ring 4.564 X 4.770 X 0.103 | 1 |
| 13 | 2H627AH | Lower Turret - Top | 1 |
| 14 | 12H623AH | Lower Chuck Drive Gear 81T 10P LH | 1 |
| 15 | *17H627AH | Lower Turret - Bottom (INCLUDES OIL TUBES) | 1 |
| N/A | 68L654AH | Numeral #1 To #6 | 1 |
| 16 | 68L816AH | Washer - SS | 12 |

| ITEM NO. | PART NO. | DESCRIPTION | QTY |
|----------|-----------------------------|--|-----|
| N/A | 8H627AH | Lower Turret Seal Shield | 1 |
| N/A | 75H616AH | Lower Turret Seal Shield - Shim 0.060 | 1 |
| N/A | 8H628AH | Lower Chuck Bearing Pin - Bottom | 6 |
| 17 | 56H615AH | V-Ring Lower Turret Seal | 1 |
| N/A | 489H654AH | Lower Turret Seal Clamp - Short | 1 |
| | 64H615AH (NOT SHOWN) | Seal Clamp Gasket | 1 |
| N/A | 490H654AH | Lower Turret Seal Clamp - Long | 1 |
| 18 | 340H654AH | Lower Turret Guard - Split (INCLUDES HARDWARE) | 1 |
| 18.1 | 562H654AH | Seam Setting Plate | 1 |
| 19 | 23H620AH (SHOWN) / 10H620AH | Lower Chuck Return Cam - Split | 1 |
| 20 | 46H617AH | Lower Chuck Cam Clamp - Outer | 6 |
| 21 | 10H617AH | Lower Chuck Cam Clamp | 2 |
| 22 | 9H620AH | Lower Chuck Cam - Split | 1 |
| 23 | 5H617AH | Snap Ring - Beveled 5.7500 Bore | 1 |
| 24 | 53P916AH | Ball Bearing | 1 |
| 25 | 6H615AH | Oil Seal 4.5000 X 5.5000 X 0.5625 | 1 |
| 26 | 10H623AH | Lower Turret Gear 72T 7P RH | 1 |
| N/A | 8H617AH | Lower Turret Gear Retainer | 1 |
| 27 | 2P917AH | Snap Ring - Beveled 3.5433 Shaft | 1 |
| 28 | 9H616AH | Ball Bearing 3.5433 X 5.5118 X 9.4490 | 1 |
| 29 | 39H617AH | Lower Drive Pinion Retainer | 1 |
| 30 | 11H623AH | Lower Drive Pinion 36T 7P RH | 1 |

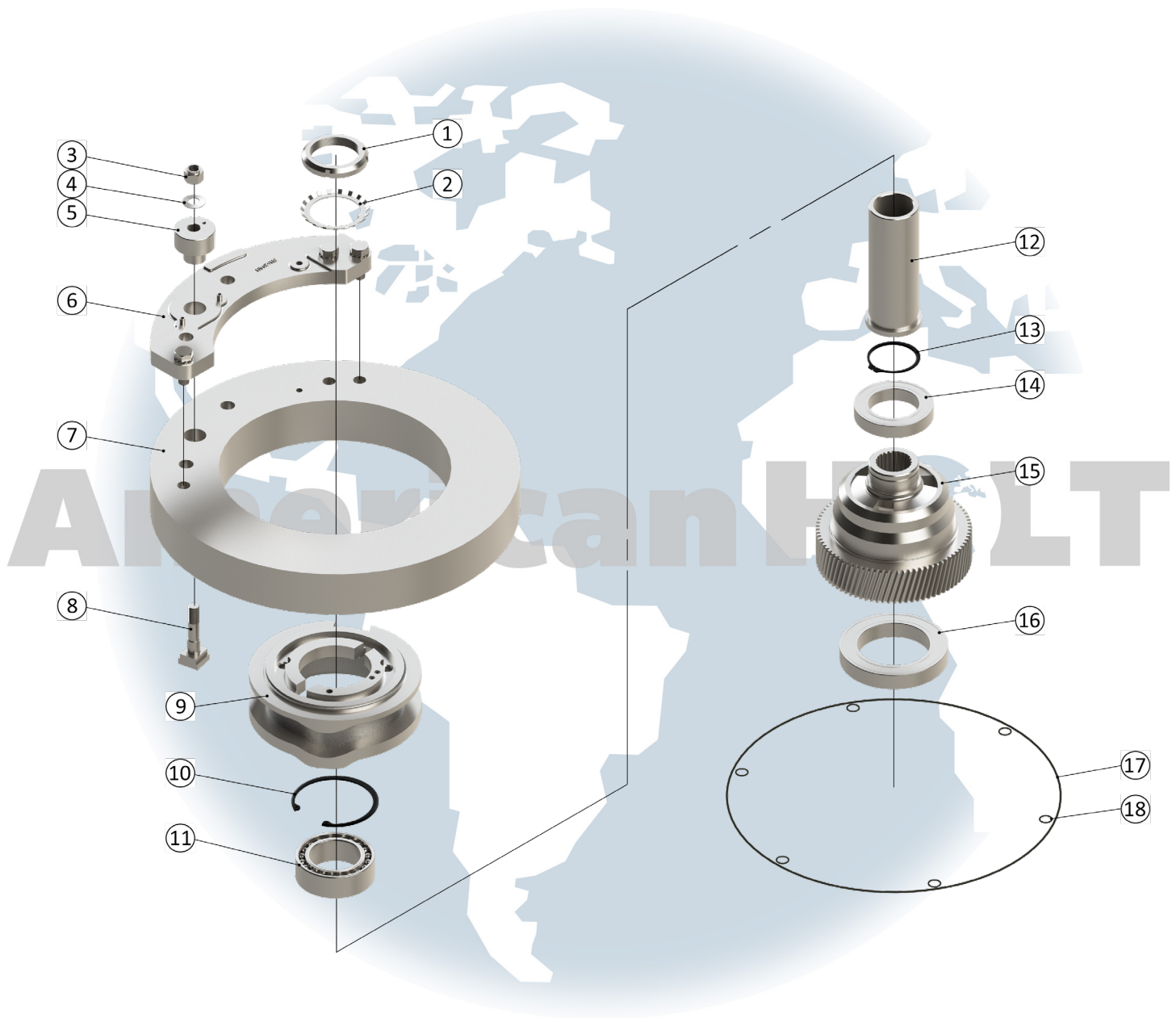
* - Item made-to-order N/A - Item is not currently offered by American Holt

FOR MORE INFORMATION, CONTACT AMERICAN HOLT AT:
781-440-9993 • sales@americanholt.com • www.americanholt.com

61H and 62H Seamers

AFTER MARKET PARTS FOR:

UPPER TURRET



NOTICE: All parts offered by American Holt are manufactured by or for American Holt and not by or for the Original Equipment Manufacturer. Part numbers shown that are those of the Original Equipment Manufacturer, if any, are used for reference purposes only. American Holt is an independent supplier of quality replacement parts having no affiliation with any Original Equipment Manufacturer. All prices are subject to change without notice. Copyright ©2019 American Holt Corp. All rights reserved.

IN-STOCK AND READY TO SHIP.

UPPER TURRET

| ITEM NO. | PART NO. | DESCRIPTION | QTY |
|----------|----------|---------------------------------------|-----|
| 1 | 23L616AH | Bearing Locknut N-14 | 1 |
| 2 | 22L616AH | Bearing Lockwasher W-14 | 1 |
| N/A | 15H617AH | Knockout Cam Flange | 1 |
| 3 | 16H616AH | Flexloc Nut | 1 |
| 4 | 13H616AH | Belleville Washer | 1 |
| 5 | 12H616AH | Seaming Cam Eccentric Bushing | 1 |
| 6 | 5H620AH | Seaming Cam Bridge | 1 |
| 7 | 17H620AH | Seaming Cam - Split | 1 |
| 8 | 3H626AH | Seaming Cam Eccentric Screw | 1 |
| 9 | 3H620AH | Knockout Cam - Split | 1 |
| 10 | 13H617AH | Snap Ring - Beveled 4.330 Bore | 1 |
| 11 | 8H616AH | Ball Bearing 2.7559 X 4.3307 X 1.4173 | 1 |
| 12 | 14H617AH | Upper Bearing Sleeve | 1 |
| 13 | 6L617AH | Snap Ring - Beveled 2.750 Shaft | 1 |
| 14 | 42H616AH | Ball Bearing 2.7559 X 4.3307 X 0.7874 | 1 |
| N/A | 42H641AH | Upper Turret - Top | 1 |
| 15 | 13H623AH | Seaming Spindle Drive Gear 81T 10P RH | 1 |
| 16 | 79H616AH | Ball Bearing 3.9370 X 5.9055 X 0.9449 | 1 |
| 17 | 37H615AH | O-Ring 18.000 X 18.250 X 0.125 | 1 |
| 18 | 11L615AH | O-Ring 0.5625 X 0.7500 X 0.0937 | 6 |
| N/A | 41H641AH | Upper Turret - Bottom | 1 |
| N/A | 10H615AH | Plastic Strip 0.100T X 0.600W | 1 |
| N/A | 34L828AH | Dowel Pin 0.498 X 0.500 X 1.00 LG | 3 |
| N/A | 12H639AH | Steam Seal Retainer | 1 |

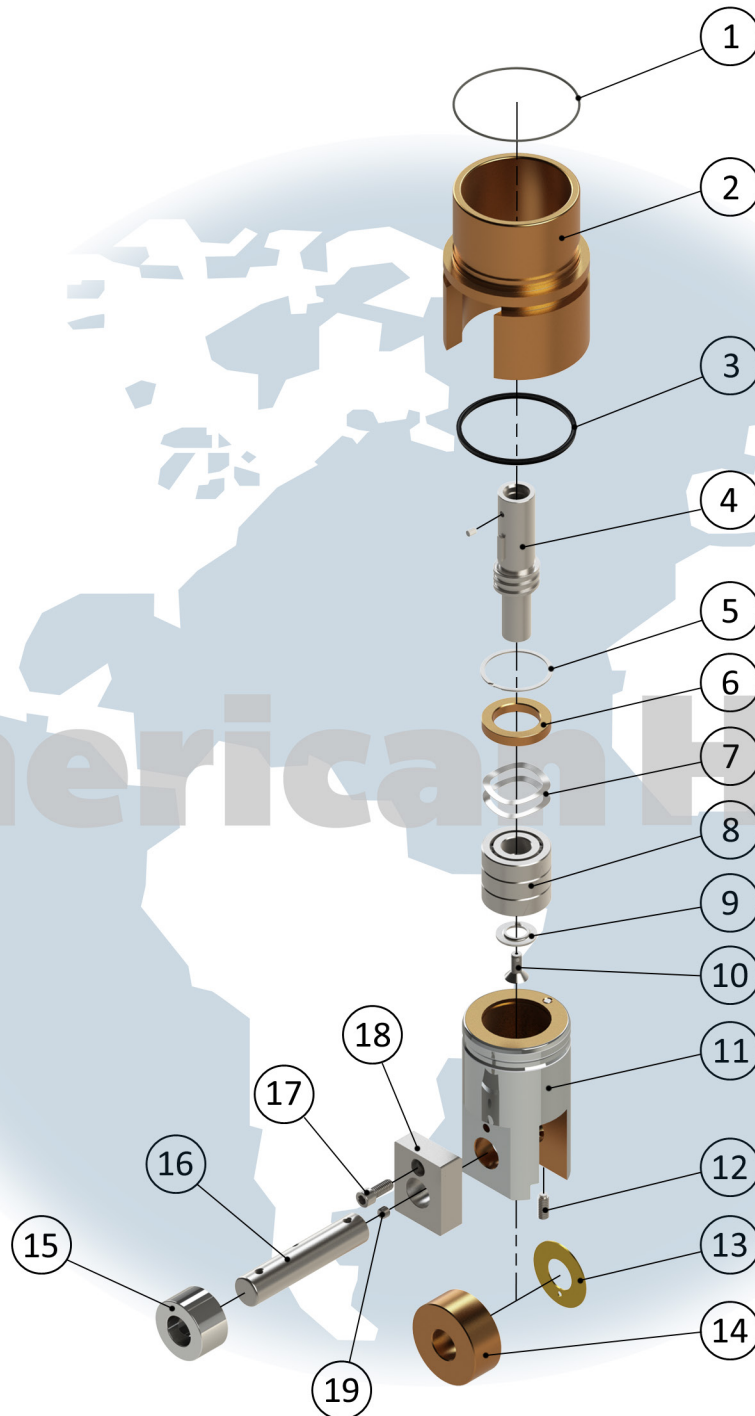
* - Item made-to-order N/A - Item is not currently offered by American Holt

FOR MORE INFORMATION, CONTACT AMERICAN HOLT AT:
781-440-9993 • sales@americanholt.com • www.americanholt.com

61H and 62H Seamers

AFTER MARKET PARTS FOR:

LOWER CHUCK - BOTTOM - 11L800AH



NOTICE: All parts offered by American Holt are manufactured by or for American Holt and not by or for the Original Equipment Manufacturer. Part numbers shown that are those of the Original Equipment Manufacturer, if any, are used for reference purposes only. American Holt is an independent supplier of quality replacement parts having no affiliation with any Original Equipment Manufacturer. All prices are subject to change without notice. Copyright ©2019 American Holt Corp. All rights reserved.

IN-STOCK AND READY TO SHIP.

LOWER CHUCK - BOTTOM - 11L800AH

| ITEM NO. | PART NO. | DESCRIPTION | QTY |
|----------|---------------------------------|--|-----|
| 1 | 26L815AH | O-Ring 3.250 X 0.375 X 0.0625 | 1 |
| 2 | 46L827AH | Lower Chuck Slide Bearing Bottom | 1 |
| 3 | 71L815AH | Polypak Seal 2.875 X 3.125 X 0.250 | 1 |
| 4 | 34L827AH | Lower Chuck Mandrel Bottom (INCLUDES HARDWARE) | 1 |
| 4.1 | 56L828AH | Dowel Pin 0.1875 X 0.250 | 1 |
| 5 | **21L817AH | Snap Ring 1.850 Bore | 1 |
| 6 | 26L827AH | Lower Chuck Pump Ring | 1 |
| 7 | 115L816AH | Wavy Spring Washer 1.404 X 1.1819 X 0.020 | 2 |
| 8 | 18L816AH | Ball Bearing 0.7874 X 1.8504 X 0.5512 | 1 |
| 9 | **78L641AH | Seaming Roll Retainer | 1 |
| 10 | **29L826AH | Seaming Roll Retainer Screw | 1 |
| 11 | 45L827AH | Lower Chuck Slide Bottom (INCLUDES HARDWARE) | 1 |
| 12 | ZZ-SHCS-SS-0.312-18X0.75-NYL | Screw | 1 |
| 13 | 93L816AH | Washer 0.8906 X 1.9375 X 0.050 | 1 |
| 14 | 25829AH | Lower Chuck Cam Roll | 1 |
| 15 | 16P346AH | Lower Chuck Return Cam Roll | 1 |
| 16 | 5L829AH | Lower Cam Roll Pin | 1 |
| 17 | ZZ-SHSS-DG-0.312-18X0.75-NYL | Screw | 1 |
| 18 | 13L827AH | Lower Chuck Slide Block Bottom | 1 |
| 19 | 57L826AH (ZZ-NPT-PLUG-0.125-27) | Pipe Plug | 1 |

****Sold in increments of 12.**

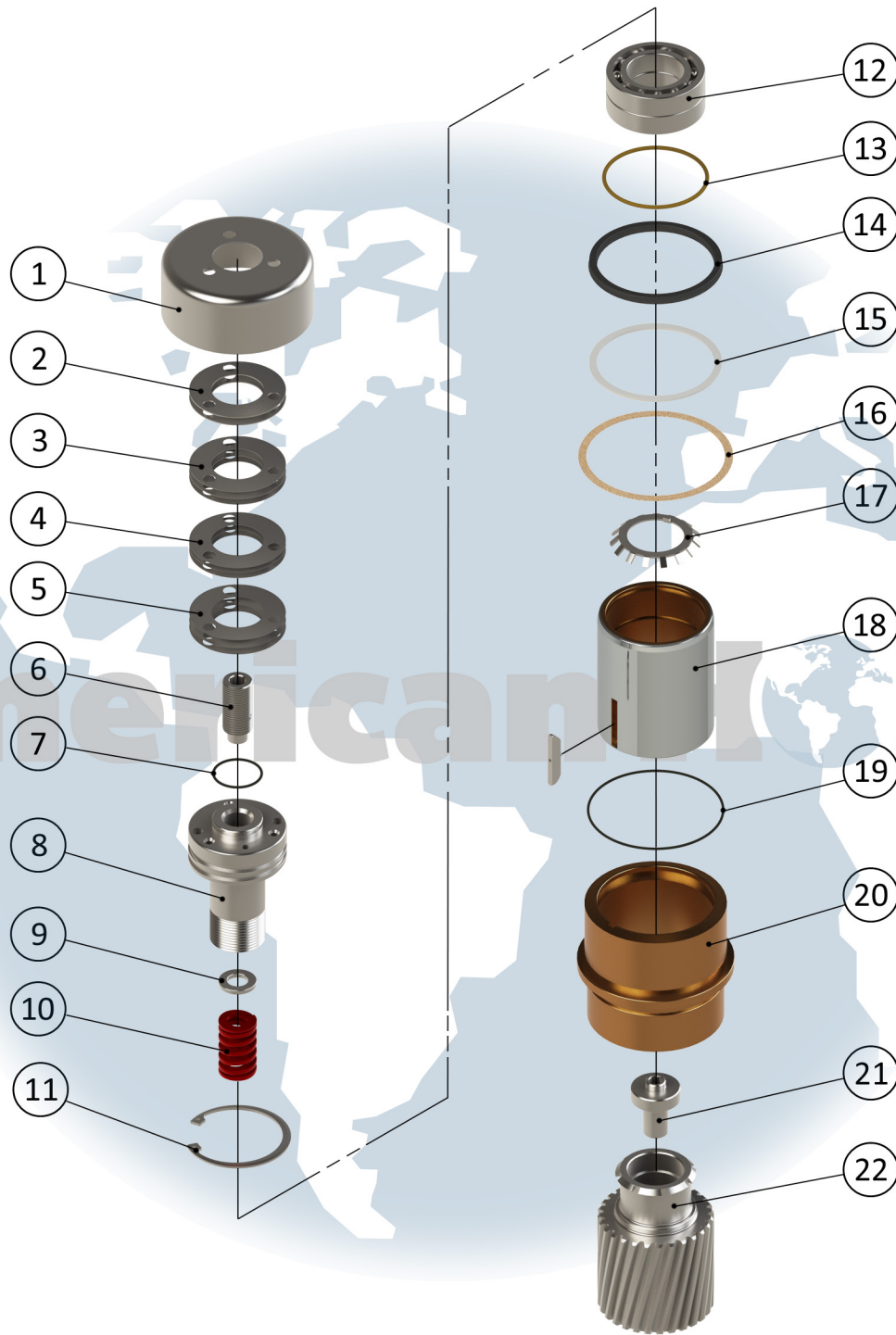
* - Item made-to-order N/A - Item is not currently offered by American Holt

FOR MORE INFORMATION, CONTACT AMERICAN HOLT AT:
781-440-9993 • sales@americanholt.com • www.americanholt.com

61H and 62H Seamers

AFTER MARKET PARTS FOR:

LOWER CHUCK - TOP - 13L800AH



NOTICE: All parts offered by American Holt are manufactured by or for American Holt and not by or for the Original Equipment Manufacturer. Part numbers shown that are those of the Original Equipment Manufacturer, if any, are used for reference purposes only. American Holt is an independent supplier of quality replacement parts having no affiliation with any Original Equipment Manufacturer. All prices are subject to change without notice. Copyright ©2019 American Holt Corp. All rights reserved.

IN-STOCK AND READY TO SHIP.

LOWER CHUCK - TOP - 13L800AH

| ITEM NO. | PART NO. | DESCRIPTION | QTY. |
|----------|----------------|--|------|
| 1 | 9L827AH | Lower Chuck Slide Shield - Top | 1 |
| 2 | 22L816-30AH | Shim 0.030 Thick | 2 |
| 3 | 22L816-10AH | Shim 0.010 Thick | 3 |
| 4 | 22L816-5AH | Shim 0.005 Thick | 3 |
| 5 | 22L816-2AH | Shim 0.002 Thick | 3 |
| 6 | 8L826AH | Lower Chuck Spring Screw | 1 |
| 7 | 83L815AH | O-Ring 1.125 X 1.250 X 0.0625 | 1 |
| 8 | 23L827AH | Lower Chuck Mandrel - Top | 1 |
| 9 | 21L816AH | Lower Chuck Spring Washer | 1 |
| 10 | 8L840AH | Lower Chuck Spring - Red | 1 |
| 11 | 41L817AH | Snap Ring - Nickel Plated 2.440 Bore | 1 |
| 12 | 116L816AH | Ball Bearing 1.3780 X 2.4409 X 1.1024 | 1 |
| 13 | 44L815AH | O-Ring 2.4375 X 2.625 X 0.0937 | 1 |
| 14 | 70L815AH | Polypak Seal 2.875 X 3.250 X 0.1875 | 1 |
| 15 | 73L815AH | Teflon Back-Up Ring 2.87 X 3.25 X 0.0625 | 1 |
| 16 | 69H615AH | Lower Chuck Gasket | 1 |
| 17 | 4P116AH | Bearing Lockwasher 35MM | 1 |
| 18 | 50L827AH | Lower Chuck Slide - Top | 1 |
| 18.1 | 32L847AH | Key | 1 |
| 19 | 26L815AH | O-Ring 3.250 X 0.375 X 0.0625 | 1 |
| 20 | 8L827AH | Lower Chuck Slide Bearing - Top | 1 |
| 21 | 9L826AH | Lower Chuck Bottom Mandrel Screw | 1 |
| 22 | 27L823AH | Lower Chuck Gear 26T 10P RH | 1 |

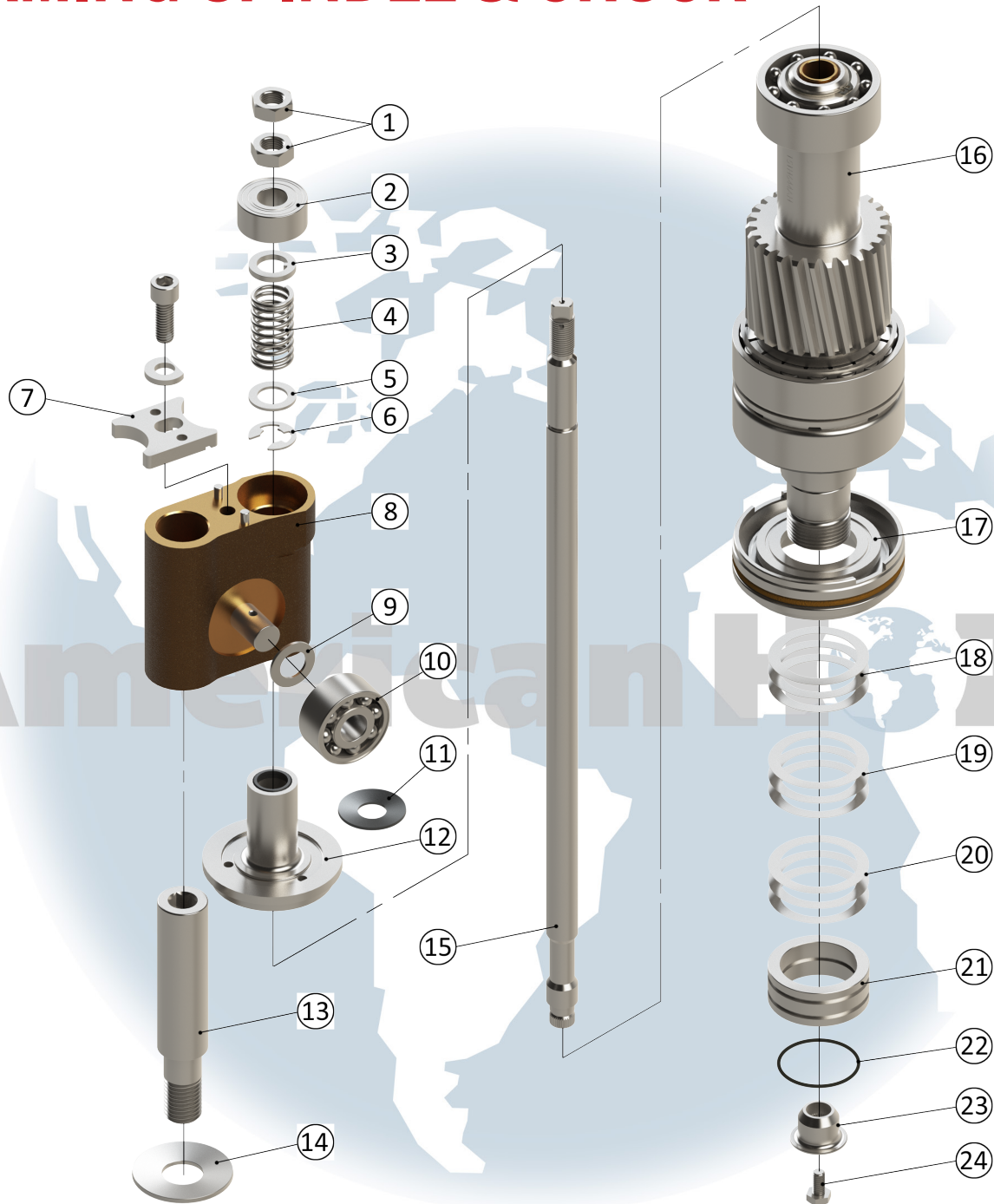
| | | |
|----------|-----------------|----------------------------|
| 12L800AH | 7L840AH | Lower Chuck Spring - Blue |
| 14L800AH | 9L840AH | Lower Chuck Spring - Gold |
| 15L800AH | 10L840AH | Lower Chuck Spring - Green |

FOR MORE INFORMATION, CONTACT AMERICAN HOLT AT:
781-440-9993 • sales@americanholt.com • www.americanholt.com

61H and 62H Seamers

AFTER MARKET PARTS FOR:

SEAMING SPINDLE & CHUCK



NOTICE: All parts offered by American Holt are manufactured by or for American Holt and not by or for the Original Equipment Manufacturer. Part numbers shown that are those of the Original Equipment Manufacturer, if any, are used for reference purposes only. American Holt is an independent supplier of quality replacement parts having no affiliation with any Original Equipment Manufacturer. All prices are subject to change without notice. Copyright ©2019 American Holt Corp. All rights reserved.

IN-STOCK AND READY TO SHIP.

SEAMING SPINDLE & CHUCK

| ITEM NO. | PART NO. | DESCRIPTION | QTY |
|----------|----------------------------|---|-----|
| 1 | ZZ-JAMNUT-SS-0.50-20X0.312 | Nut | 2 |
| 2 | 15L816AH | Ball Bearing 0.5906 X 1.3780 X 0.6250 | 1 |
| 3 | 49L816AH | Keyed Washer 0.9375 X 0.1250 | 1 |
| 4 | 1H640AH | Knockout Rod Cushion Spring | 1 |
| 5 | 136L816AH | Washer 0.5938 X 0.9375 X 0.0625 | 1 |
| 6 | 1L617AH | Snap Ring 0.6250 Shaft SS | 1 |
| 7 | 34L817AH | Knockout Rod Bearing Retainer | 1 |
| 8 | 44H641AH | Knockout Carrier (INCLUDES HARDWARE) | 1 |
| 8.1 | 1H629AH | Knockout Cam Roll Pin | 1 |
| 8.2 | 71L826AH | Knockout Cam Roll Pin Set Screw | 1 |
| 9 | 18H616AH | Washer 0.5938 X 1.0000 X 0.0625 | 1 |
| 10 | 17H616AH | Ball Bearing 0.5906 X 1.6536 X 0.750 | 1 |
| 11 | 38L816AH | Belleville Washer 0.562 X 1.338 X 0.059 | 1 |
| 12 | 39H641AH | Knockout Guide Flange | 1 |
| 12.1 | 77L815AH | Wiper Ring | 1 |
| 13 | 4H626AH | Knockout Carrier Guide Pin | 1 |
| 14 | 37L816AH | Belleville Washer 0.803 X 1.969 X 0.099 | 1 |
| 15 | 10H644AH | Knockout Rod | 1 |
| 16 | 3H600AH | Seaming Spindle | 1 |
| 17 | 9L800AH | Face Seal and Rotor | 1 |
| 18 | 52L816-10AH | Shim 0.010 Thick | 3 |
| 19 | 52L816-5AH | Shim 0.005 Thick | 3 |
| 20 | 52L816-3AH | Shim 0.003 Thick | 3 |
| 21 | 10H653AH | Seaming Spindle Seal Sleeve | 1 |
| 22 | 28L815AH | O-Ring 1.5000 X 1.6250 X 0.0625 | 1 |
| 23 | 25L841AH | Knockout Pad | 1 |
| 24 | 13L826AH | Long-Lok Hex HD Cap Screw 0.250-28 X 0.500 SS | 1 |

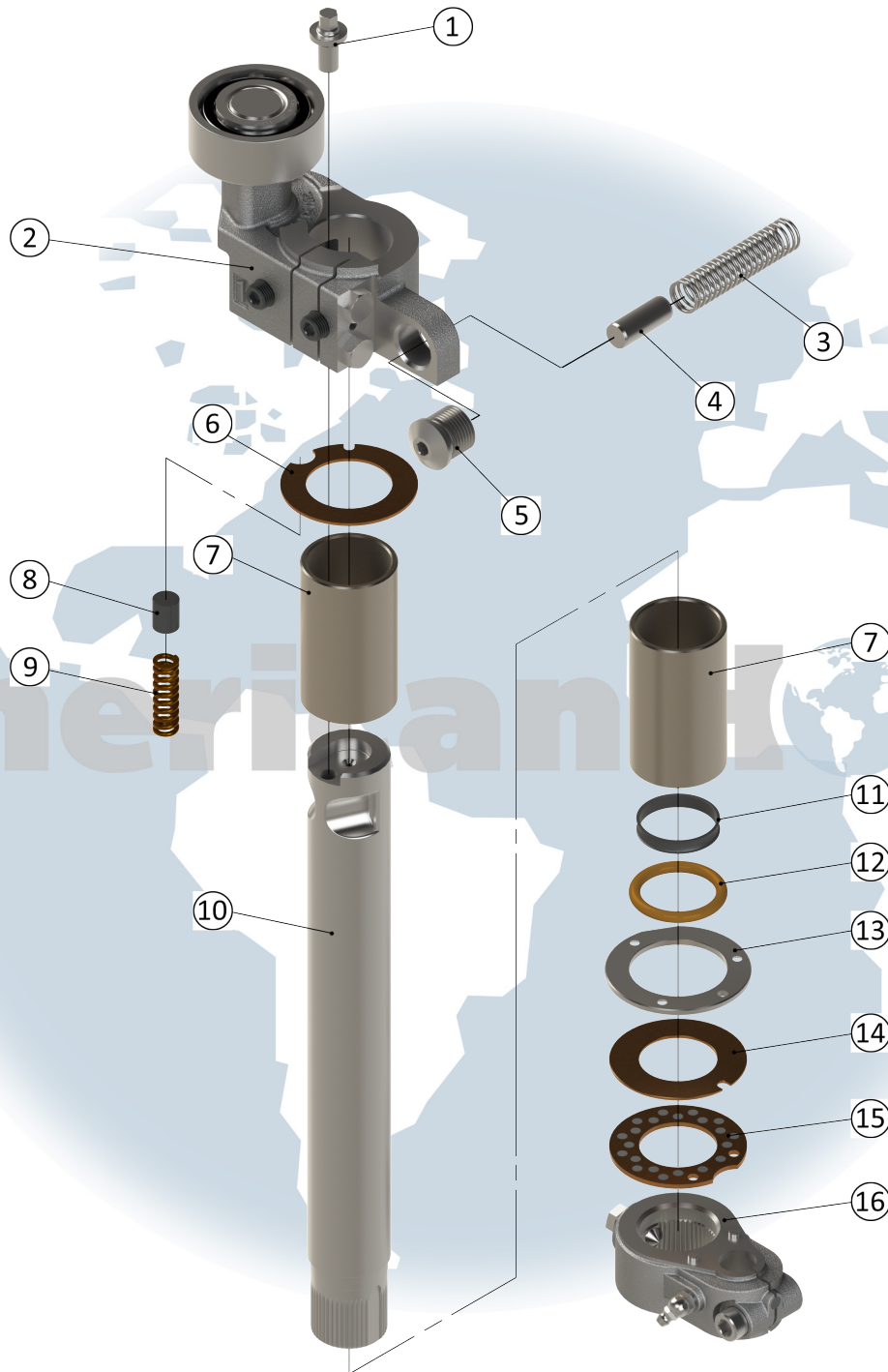
* - Item made-to-order N/A - Item is not currently offered by American Holt

FOR MORE INFORMATION, CONTACT AMERICAN HOLT AT:
781-440-9993 • sales@americanholt.com • www.americanholt.com

61H and 62H Seamers

AFTER MARKET PARTS FOR:

SEAMING LEVER 1ST OPERATION



NOTICE: All parts offered by American Holt are manufactured by or for American Holt and not by or for the Original Equipment Manufacturer. Part numbers shown that are those of the Original Equipment Manufacturer, if any, are used for reference purposes only. American Holt is an independent supplier of quality replacement parts having no affiliation with any Original Equipment Manufacturer. All prices are subject to change without notice. Copyright ©2019 American Holt Corp. All rights reserved.

IN-STOCK AND READY TO SHIP.

SEAMING LEVER 1ST OPERATION

| ITEM NO. | PART NO. | DESCRIPTION | QTY |
|----------|----------|---|-----|
| 1 | 29H626AH | Adjusting Screw | 1 |
| 2 | 29H641AH | Seaming Cam Lever 1st Operation (INCLUDES HARDWARE) | 1 |
| 2.1 | 39L816AH | Ball Bearing 0.9843 X 2.4400 X 1.0000 | 1 |
| 2.2 | 5H626AH | Seaming Adjustment Screw | 2 |
| 3 | 12H640AH | Seaming Cam Lever Spring | 1 |
| 4 | 20H628AH | Spring Guide | 1 |
| 5 | 42H626AH | Spring Retainer | 1 |
| 6 | 52H616AH | Washer 1.5313 X 2.4688 X 0.0625 | 1 |
| 7 | 63L816AH | Bronze Bushing | 2 |
| 8 | 9L828AH | Seaming Cam Lever Lift Plug | 1 |
| 9 | 6L840AH | Seaming Cam Lever Lift Spring | 1 |
| 10 | 22H641AH | Seaming Lever Shaft 1st Operation | 1 |
| 11 | 64L815AH | Slipper Seal | 1 |
| 12 | 25L815AH | O-Ring 1.3750 X 1.7500 X 0.1875 | 1 |
| 13 | 65H616AH | Wear Washer RH SS | 1 |
| 14 | 60H616AH | Washer 1.400 X 2.469 X 0.063 | 1 |
| 15 | 61H616AH | Washer 1.400 X 2.469 X 0.094 | 1 |
| 16 | 24H641AH | Seaming Roll Lever (INCLUDES HARDWARE) | 1 |
| 16.1 | 83L626AH | Seaming Roll Lever Set Screw | 1 |
| 16.2 | 65L614AH | Rubber Plug | 1 |
| N/A | L641AH | Seaming Roll 1st Operation | REF |
| N/A | L641AH | Seaming Roll 2nd Operation | REF |

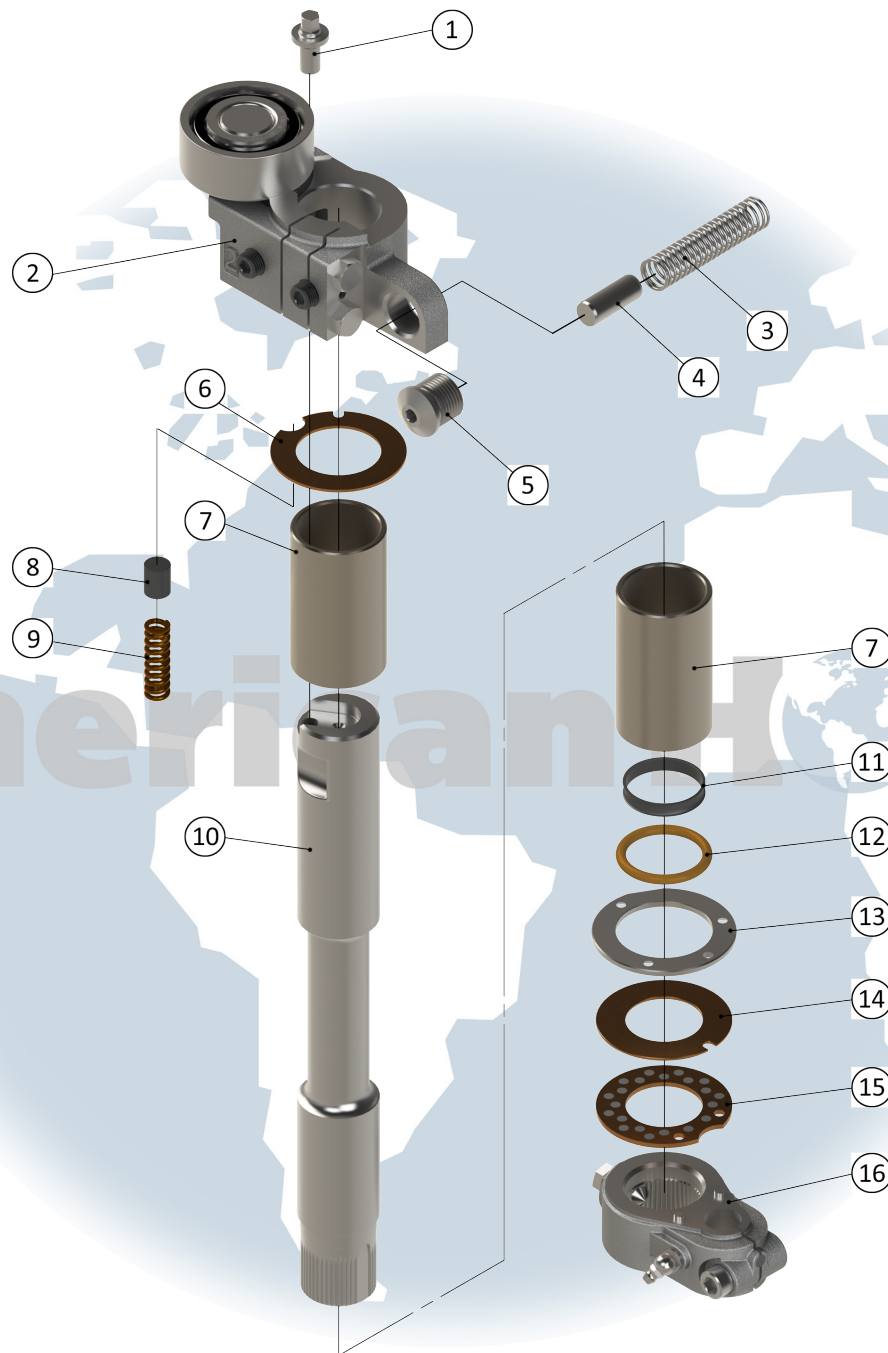
* - Item made-to-order N/A - Item is not currently offered by American Holt

FOR MORE INFORMATION, CONTACT AMERICAN HOLT AT:
781-440-9993 • sales@americanholt.com • www.americanholt.com

61H and 62H Seamers

AFTER MARKET PARTS FOR:

SEAMING LEVER 2ND OPERATION



NOTICE: All parts offered by American Holt are manufactured by or for American Holt and not by or for the Original Equipment Manufacturer. Part numbers shown that are those of the Original Equipment Manufacturer, if any, are used for reference purposes only. American Holt is an independent supplier of quality replacement parts having no affiliation with any Original Equipment Manufacturer. All prices are subject to change without notice. Copyright ©2019 American Holt Corp. All rights reserved.

IN-STOCK AND READY TO SHIP.

SEAMING LEVER 2ND OPERATION

| ITEM NO. | PART NO. | DESCRIPTION | QTY |
|----------|----------|---|-----|
| 1 | 29H626AH | Adjusting Screw | 1 |
| 2 | 30H641AH | Seaming Cam Lever 2nd Operation (INCLUDES HARDWARE) | 1 |
| 2.1 | 39L816AH | Ball Bearing 0.9843 X 2.4400 X 1.0000 | 1 |
| 2.2 | 5H626AH | Seaming Adjustment Screw | 1 |
| 3 | 12H640AH | Seaming Cam Lever Spring | 1 |
| 4 | 20H628AH | Spring Guide | 1 |
| 5 | 42H626AH | Spring Retainer | 1 |
| 6 | 52H616AH | Washer 1.5313 X 2.4688 X 0.0625 | 1 |
| 7 | 63L816AH | Bronze Bushing | 2 |
| 8 | 9L828AH | Seaming Cam Lever Lift Plug | 1 |
| 9 | 6L840AH | Seaming Cam Lever Lift Spring | 1 |
| 10 | 23H641AH | Seaming Lever Shaft 2nd Operation | 1 |
| 11 | 64L815AH | Slipper Seal | 1 |
| 12 | 25L815AH | O-Ring 1.3750 X 1.7500 X 0.1875 | 1 |
| 13 | 67H616AH | Wear Washer LH SS | 1 |
| 14 | 60H616AH | Washer 1.400 X 2.469 X 0.063 | 1 |
| 15 | 61H616AH | Washer 1.400 X 2.469 X 0.094 | 1 |
| 16 | 24H641AH | Seaming Roll Lever (INCLUDES HARDWARE) | 1 |
| 16.1 | 83L626AH | Seaming Roll Lever Set Screw | 1 |
| 16.2 | 65L614AH | Rubber Plug | 1 |
| N/A | L641AH | Seaming Roll 1st Operation | REF |
| N/A | L641AH | Seaming Roll 2nd Operation | REF |

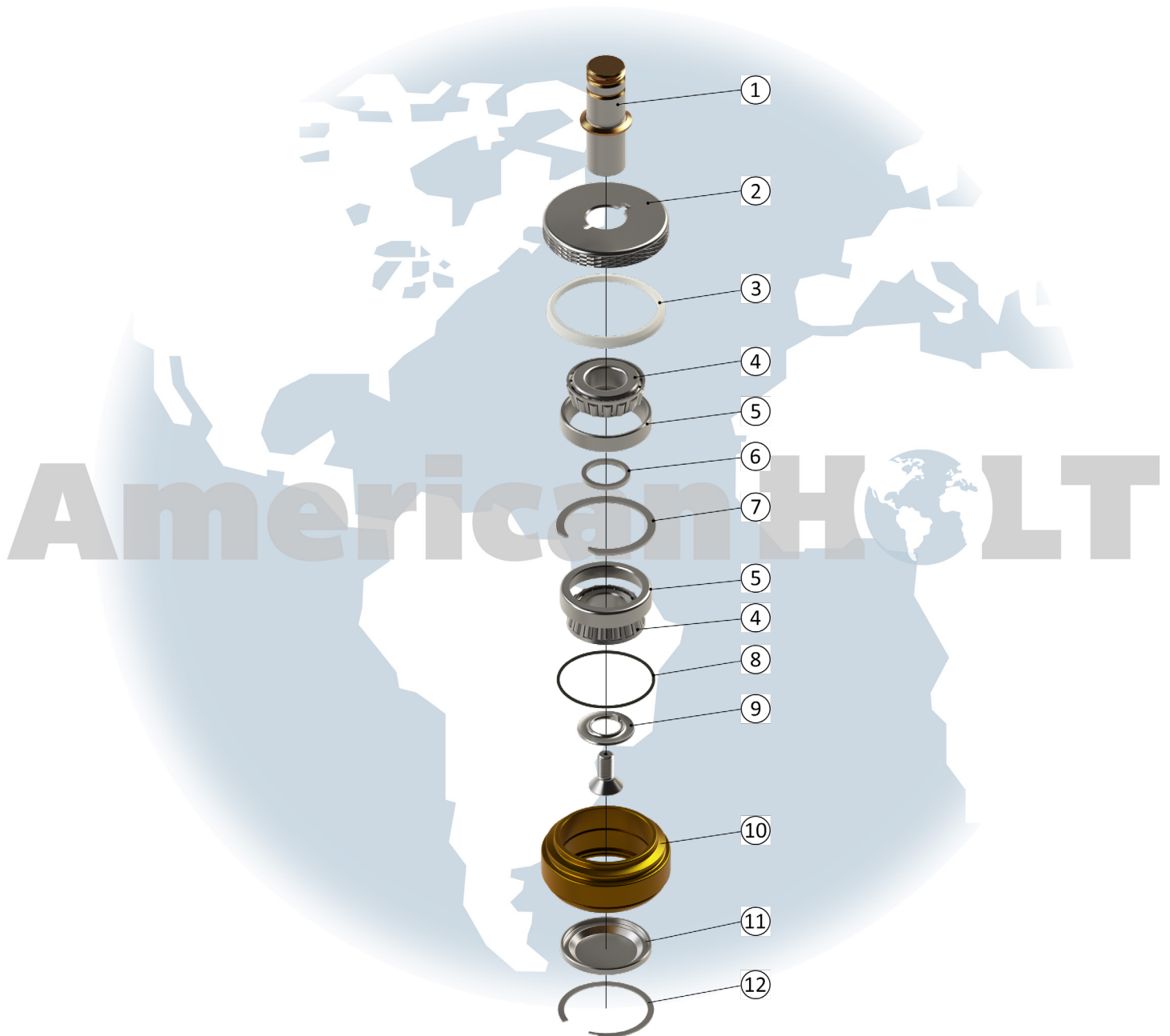
* - Item made-to-order N/A - Item is not currently offered by American Holt

FOR MORE INFORMATION, CONTACT AMERICAN HOLT AT:
781-440-9993 • sales@americanholt.com • www.americanholt.com

61H and 62H Seamers

AFTER MARKET PARTS FOR:

SEAMING ROLLS



NOTICE: All parts offered by American Holt are manufactured by or for American Holt and not by or for the Original Equipment Manufacturer. Part numbers shown that are those of the Original Equipment Manufacturer, if any, are used for reference purposes only. American Holt is an independent supplier of quality replacement parts having no affiliation with any Original Equipment Manufacturer. All prices are subject to change without notice. Copyright ©2019 American Holt Corp. All rights reserved.

IN-STOCK AND READY TO SHIP.

SEAMING ROLLS

| ITEM NO. | PART NO. | DESCRIPTION | QTY |
|----------|--------------------------|--------------------------------------|-----|
| 1 | 81L641AH | Seaming Roll Pin | 1 |
| 1.1 | 29L826AH | Seaming Roll Retainer Screw | 1 |
| 2 | 212L616AH | Seaming Roll Upper Shield | 1 |
| 3 | 28L615AH | Oil Seal 2.0000 X 2.3125 X 0.1094 | 1 |
| 4 | 185L616AH | Roller Bearing Cone #4A (TAPERED) | 2 |
| 5 | 186L616AH | Roller Bearing Cup (TAPERED) | 2 |
| 6 | 49L617AH | Snap Ring 0.8125 Shaft X 0.088 Thick | 1 |
| 7 | 45L617AH | Snap Ring | 1 |
| | 362L616-3AH (NOT SHOWN) | Shim 0.003 Thick | 1 |
| | 362L616-5AH (NOT SHOWN) | Shim 0.005 Thick | 1 |
| | 362L616-10AH (NOT SHOWN) | Shim 0.010 Thick | 1 |
| | 362L616-32AH (NOT SHOWN) | Shim 0.032 Thick | 1 |
| 8 | 23L615AH | O-Ring | 1 |
| 9 | 78L641AH | Seaming Roll Retainer | 1 |
| 10 | L641AH | Seaming Roll 1st Operation | 1 |
| | | Seaming Roll 2nd Operation | 1 |
| 11 | 198L616AH | Seaming Roll Bottom Closure | 1 |
| 12 | 48L617AH | Snap Ring 1.750 Bore | 1 |

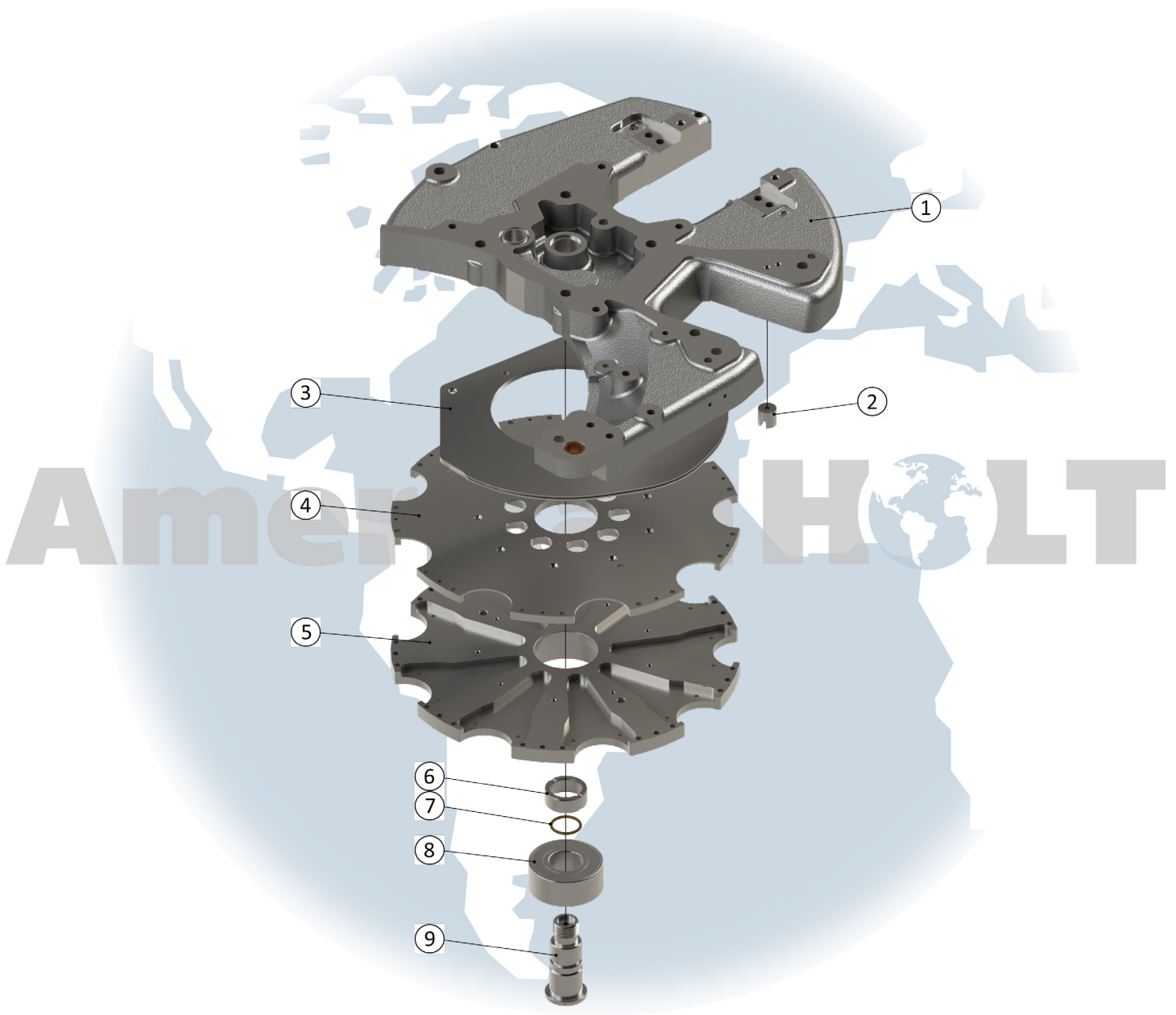
* - Item made-to-order N/A - Item is not currently offered by American Holt

FOR MORE INFORMATION, CONTACT AMERICAN HOLT AT:
781-440-9993 • sales@americanholt.com • www.americanholt.com

61H and 62H Seamers

AFTER MARKET PARTS FOR:

UPPER TURRET HOUSING SEPARATOR



NOTICE: All parts offered by American Holt are manufactured by or for American Holt and not by or for the Original Equipment Manufacturer. Part numbers shown that are those of the Original Equipment Manufacturer, if any, are used for reference purposes only. American Holt is an independent supplier of quality replacement parts having no affiliation with any Original Equipment Manufacturer. All prices are subject to change without notice. Copyright ©2019 American Holt Corp. All rights reserved.

IN-STOCK AND READY TO SHIP.

UPPER TURRET HOUSING SEPARATOR

| ITEM NO. | PART NO. | DESCRIPTION | QTY |
|----------|---------------------------|---------------------------------------|-----|
| 1 | 13H643AH | Cap Feed Plate | REF |
| 2 | 14L633AH | Cap Feed Drag Magnet | 1 |
| 3 | H673AH (SEE CHANGE PARTS) | Inner Cap Guide | REF |
| 4 | H670AH (SEE CHANGE PARTS) | Feed Turret Plate | REF |
| 5 | H670AH (SEE CHANGE PARTS) | Feed Turret | REF |
| N/A | 11H614AH | Separator Case Overflow Fitting | 1 |
| 6 | 163H653AH | Feed Turret Seal Spacer | 1 |
| 7 | 14S815AH | O-Ring 1.75 X 1.25 X 0.1250 | 1 |
| 8 | 59P916AH | Ball Bearing 1.5748 X 3.5433 X 1.4375 | 1 |
| 9 | 35H626AH | Feed Turret Bearing Screw - LH Thread | 1 |

* - Item made-to-order N/A - Item is not currently offered by American Holt

FOR MORE INFORMATION, CONTACT AMERICAN HOLT AT:
781-440-9993 • sales@americanholt.com • www.americanholt.com

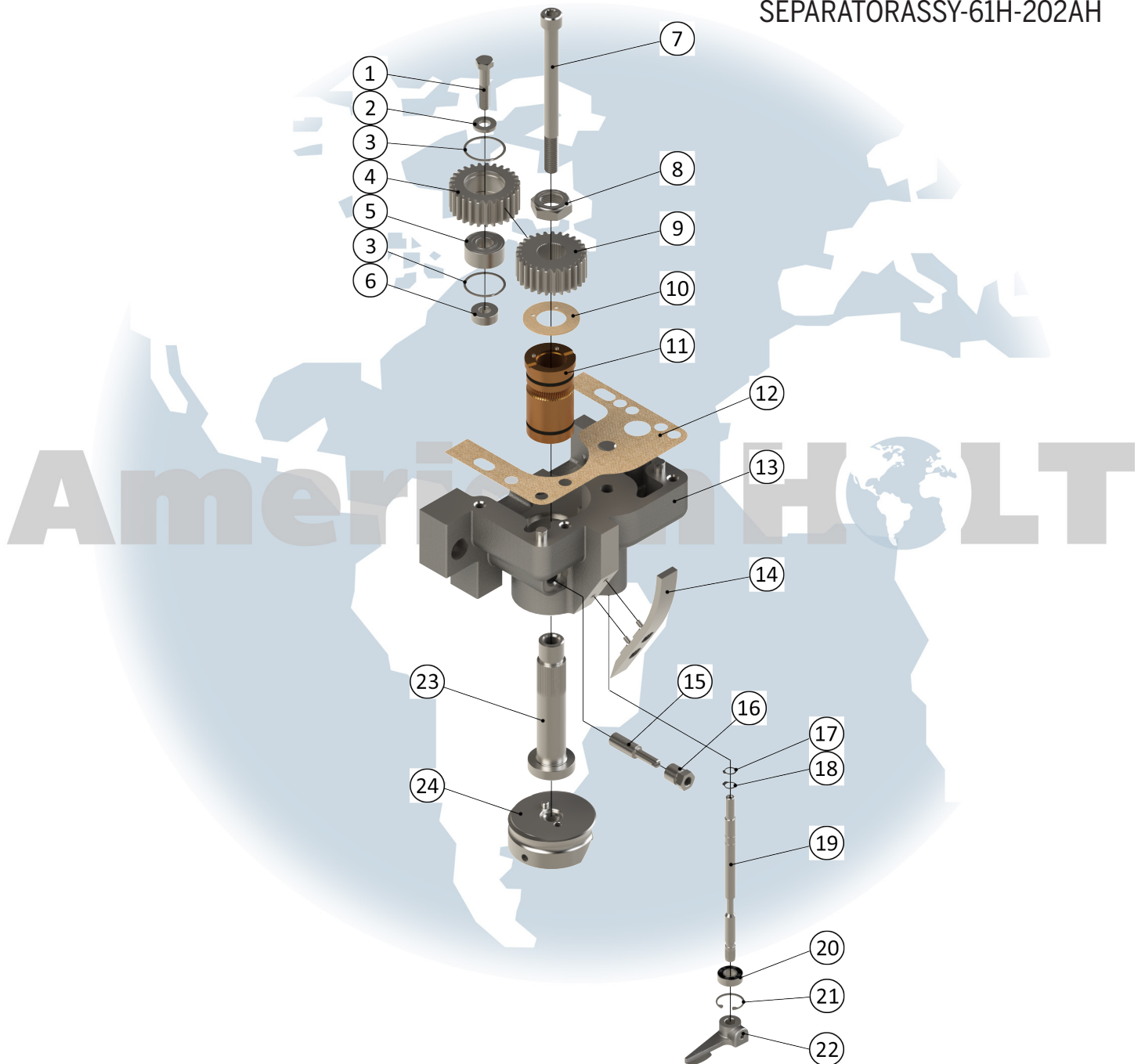
61H and 62H Seamers

AFTER MARKET PARTS FOR:

SEPARATOR BRACKET

*Sold as an assembly
under part number:*

SEPARATORASSY-61H-202AH



NOTICE: All parts offered by American Holt are manufactured by or for American Holt and not by or for the Original Equipment Manufacturer. Part numbers shown that are those of the Original Equipment Manufacturer, if any, are used for reference purposes only. American Holt is an independent supplier of quality replacement parts having no affiliation with any Original Equipment Manufacturer. All prices are subject to change without notice. Copyright ©2019 American Holt Corp. All rights reserved.

IN-STOCK AND READY TO SHIP.

SEPARATOR BRACKET SEPARATOR ASSY-61H-202AH

| ITEM NO. | PART NO. | DESCRIPTION | QTY |
|----------|---|---|-----|
| 1 | ZZ-HHBOLT-SS-0.375-16X1.75 | Screw | 1 |
| 2 | ZZ-WASHFLAT-SS-0.41X0.81X0.12 | Washer | 1 |
| 3 | 12L817AH | Snap Ring 1.3750 Bore | 2 |
| 4 | 2L823AH | Separator Intermediate Gear | 1 |
| 5 | 15L816AH | Ball Bearing 0.5906 X 1.3780 X 0.6250 | 1 |
| 6 | 14L853AH | Spacer 0.4062 X 0.9375 X 0.3437 | 1 |
| 7 | 19L826AH | Separator Spindle Screw | 1 |
| 8 | 39H626AH | Locknut | 1 |
| 9 | 3L823AH | Separator Driven Gear 27T 12P | 1 |
| 10 | 50L816AH | Washer 1.0156 X 1.9375 X 0.0625 | 1 |
| 11 | 1L816AH | Separator Spindle Bearing (INCLUDES HARDWARE) | 1 |
| 11.1 | 1L815AH | Oil Seal 1.0000 X 1.3750 X 0.1875 | 1 |
| 11.2 | 18L815AH | O-Ring 1.437 X 1.625 X 0.0938 | 2 |
| 12 | 25H615AH | Separator Gasket | 1 |
| 13 | H685AH (61H685 SHOWN) | Separator Bracket (INCLUDES HARDWARE) | 1 |
| 14 | 69H656AH | Cap Magazine Guide - 32° (INCLUDES HARDWARE) | 1 |
| 14.1 | 227L816-30AH | Shim 0.030 Thick | 1 |
| 15 | 21L826AH | Separator Adjustment Screw | 1 |
| 16 | 22L826AH | Separator Adjustment Lock Screw | 1 |
| 17 | 32H617AH | Snap Ring 0.3750 Shaft | 1 |
| 18 | 34H617AH | Snap Ring Bowed 0.3750 Shaft | 1 |
| 19 | 9H628AH | NC NC Finger Pivot Pin | 1 |
| 20 | 2L816AH | Ball Bearing 0.375 X 0.875 X 0.281 | 1 |
| 21 | 33H617AH | Snap Ring 0.8750 Bore | 1 |
| 22 | 1H682AH | NC NC Finger (INCLUDES HARDWARE) | 1 |
| 23 | 3L856AH | Separator Spindle | 1 |
| 24 | L856AH (124L856AH SHOWN - See Change Parts) | Separator Disc & Knife (INCLUDES HARDWARE) | 1 |

* - Item made-to-order N/A - Item is not currently offered by American Holt

FOR MORE INFORMATION, CONTACT AMERICAN HOLT AT:
781-440-9993 • sales@americanholt.com • www.americanholt.com

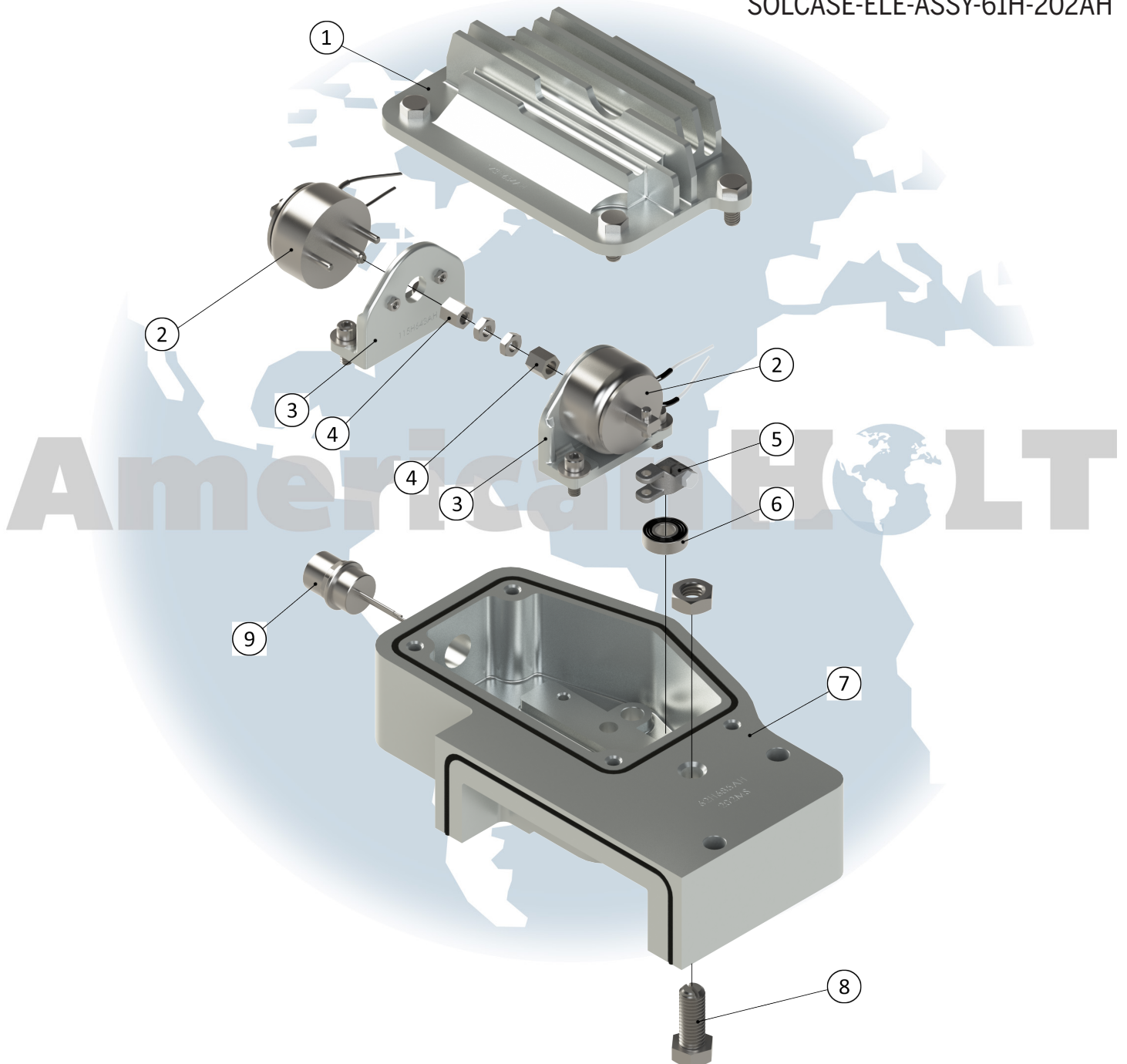
61H and 62H Seamers

AFTER MARKET PARTS FOR:

SOLENOID KIT

*Sold as an assembly
under part number:*

SOLCASE-ELE-ASSY-61H-202AH



NOTICE: All parts offered by American Holt are manufactured by or for American Holt and not by or for the Original Equipment Manufacturer. Part numbers shown that are those of the Original Equipment Manufacturer, if any, are used for reference purposes only. American Holt is an independent supplier of quality replacement parts having no affiliation with any Original Equipment Manufacturer. All prices are subject to change without notice. Copyright ©2019 American Holt Corp. All rights reserved.

IN-STOCK AND READY TO SHIP.

SOLENOID KIT SOLCASE-ELE-ASSY-61H-202AH

| ITEM NO. | PART NO. | DESCRIPTION | QTY |
|----------|-------------------------|--|-----|
| 1 | 143H654AH | Solenoid Housing Cover (INCLUDES HARDWARE) | 1 |
| 2 | 52H633AH | NC NC Solenoid (INCLUDES HARDWARE) | 2 |
| N/A | 3H682AH | NC NC Solenoid Rod | 2 |
| 3 | 115H643AH | Solenoid Bracket (INCLUDES HARDWARE) | 2 |
| 4 | 24H626AH | Solenoid Collar | 2 |
| 5 | 2H682AH | NC NC Lever Link (INCLUDES HARDWARE) | 1 |
| 6 | 2L816AH | Ball Bearing | 1 |
| 7 | H685AH (62H685AH SHOWN) | Solenoid Case | 1 |
| 8 | 20L826AH | Separator Hold Down Screw | 1 |
| 9 | 141L885-PLUGAH | Solenoid Case Plug | 1 |

* - Item made-to-order N/A - Item is not currently offered by American Holt

FOR MORE INFORMATION, CONTACT AMERICAN HOLT AT:
781-440-9993 • sales@americanholt.com • www.americanholt.com

61H and 62H Seamers

AFTER MARKET PARTS FOR:

CHANGE PARTS – 202 LID x 211 CAN (32 Degrees)



NOTICE: All parts offered by American Holt are manufactured by or for American Holt and not by or for the Original Equipment Manufacturer. Part numbers shown that are those of the Original Equipment Manufacturer, if any, are used for reference purposes only. American Holt is an independent supplier of quality replacement parts having no affiliation with any Original Equipment Manufacturer. All prices are subject to change without notice. Copyright ©2019 American Holt Corp. All rights reserved.

IN-STOCK AND READY TO SHIP.

CHANGE PARTS - 202 LID x 211 CAN (32 Degrees)

| ITEM NO. | PART NO. | DESCRIPTION | QTY |
|----------|-------------|---|-----|
| 1 | 265L685AH | Cap Magazine Rods Retainer - 202MS (INCLUDES HARDWARE) | 1 |
| 2 | 36L656AH | Cover Guide Strap Set - L.H. & R.H. | 1 |
| 3 | 144L856AH | Rear Cover Feed Chute Rod - 202MS | 1 |
| 4 | 143L856B.AH | Side Cover Feed Chute Rod | 2 |
| 5 | 142L856AH | Front Cover Feed Chute Rod - 202MS | 1 |
| 6 | 347L885AH | Upper Connecting Rod Ring - 202 MS (INCLUDES HARDWARE) | 1 |
| 7 | 348L885AH | Lower Connecting Rod Ring - 202MS (INCLUDES HARDWARE) | 1 |
| 8 | 59L846AH | Sensor Head Holder | 1 |
| 9 | 138L856AH | Rear Cap Magazine Rod - 32 Degree | 1 |
| 10 | 70H656AH | Side Cap Magazine Rod - 32 Degree | 2 |
| 11 | 71H656AH | Front Cap Magazine Rod - 32 Degree | 1 |
| 12 | 67H656AH | Right Cap Magazine Guide - 32 Degree | 1 |
| 13 | 68H656AH | Front Cap Magazine Guide - 32 Degree | 1 |
| 14 | 66H656AH | Left Cap Magazine Guide - 32 Degree | 1 |
| 15 | 143H654AH | Solenoid Housing Cover (INCLUDES HARDWARE) | 1 |
| 16 | 62H685AH | Solenoid Case - 202MS (INCLUDES HARDWARE) | 1 |
| 17 | 25H615AH | Separator Bracket Top Gasket | 1 |
| 18 | 61H685AH | Separator Bracket - 32 Degree - 202MS (INCLUDES HARDWARE) | 1 |
| 19 | 124L856AH | Separator Disc/Knife - 202MS (INCLUDES HARDWARE) | 1 |

| ITEM NO. | PART NO. | DESCRIPTION | QTY |
|----------|--------------|---|-----|
| 20 | 414H673AH | Outer Cap Guide Section - 202MS | 1 |
| 21 | 412H673AH | Inner Cap Guide - 202MS | 1 |
| 22 | 413H673AH | Outer Cap Guide Rail - 202MS | 1 |
| 23 | 1H684AH | Can Flange Guide | 1 |
| 24 | 8L815AH | Oil Seal | 1 |
| 25 | 82H659AH | Cap Pusher - 202MS | 9 |
| 26 | 112H670AH | Gassing Turret Plate - 202MS/211 Diameter B=+30 (INCLUDES HARDWARE) | 1 |
| 27 | 48H670AH | Gassing Turret - 207.5/211 TB=+30 PB=+30 (INCLUDES HARDWARE) | 1 |
| 28 | 65L870+30AH | Feed Turret Insert - 202-204/211 OR 202MS TB=+30 PB=+30 | 9 |
| 29 | 8H653AH | Seaming Turret Spacer - Split (INCLUDES HARDWARE) | 1 |
| 30 | 48H617AH | Discharge Turret Clamp - Split (INCLUDES HARDWARE) | 1 |
| 31 | 5H653AH | Discharge Turret Spacer - Split (INCLUDES HARDWARE) | 1 |
| 32 | 1H608AH+30AH | Seaming & Discharge Turret - 211 Diameter B=+30 | 4 |
| 33 | 2H684AH | Can Feed Inlet Rail - 211 | 1 |
| 34 | 1H683AH | Can Feed & Discharge Rail - 211 | 1 |
| 35 | 48L653AH | Discharge Table Rail Spacer | 2 |
| 36 | 15H645AH | Upper Discharge Rail - 200-211 | 1 |
| 37 | 67H642AH | Seaming Chuck Bell - 202MS SB=STD LB=STD (INCLUDES HARDWARE) | 1 |
| 38 | 349H653AH | Seaming Chuck Bell Spacer - Split | 1 |

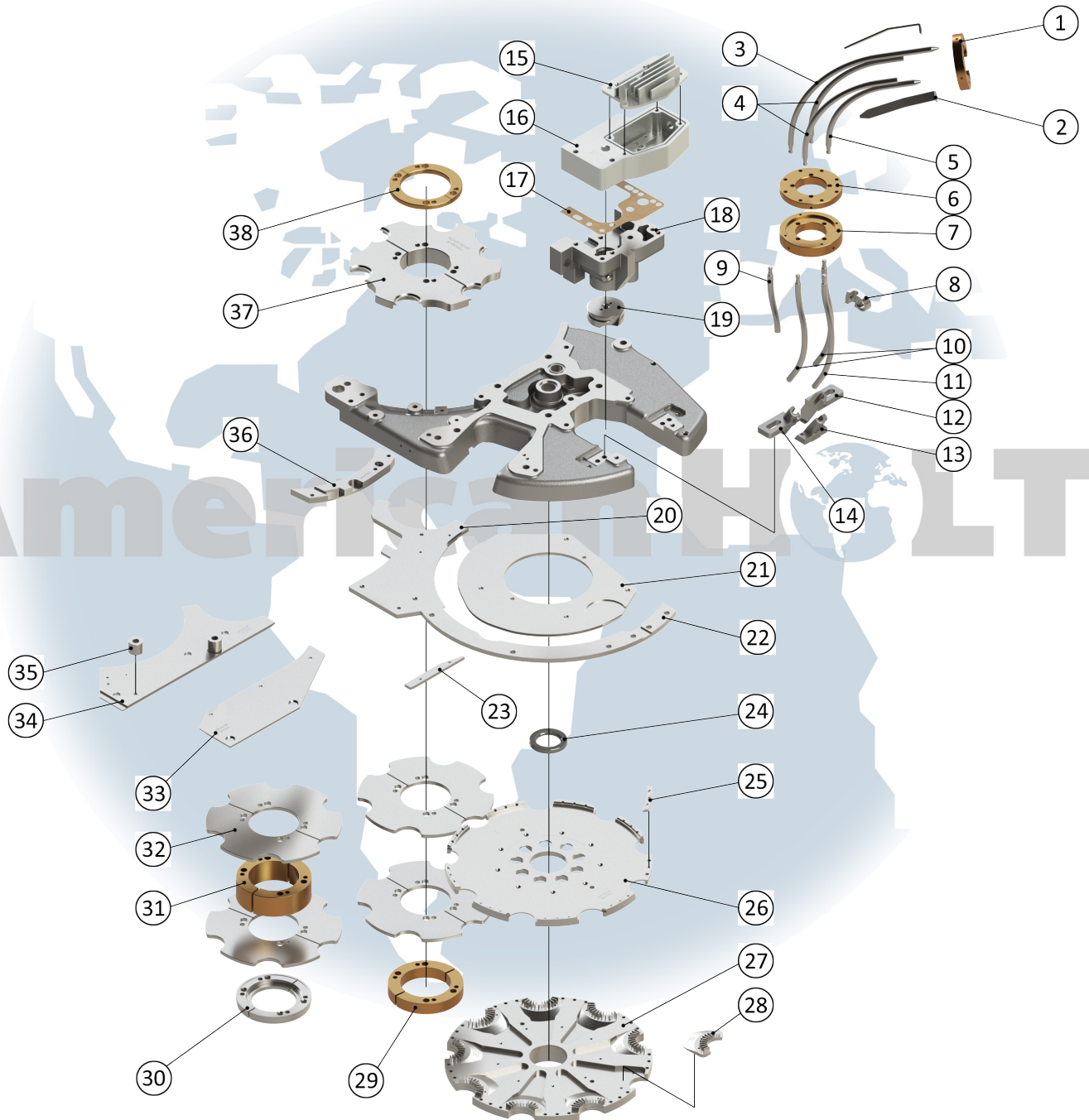
* - Item made-to-order N/A - Item is not currently offered by American Holt

FOR MORE INFORMATION, CONTACT AMERICAN HOLT AT:
781-440-9993 • sales@americanholt.com • www.americanholt.com

61H and 62H Seamers

AFTER MARKET PARTS FOR:

CHANGE PARTS – 200 LID x 202 CAN



NOTICE: All parts offered by American Holt are manufactured by or for American Holt and not by or for the Original Equipment Manufacturer. Part numbers shown that are those of the Original Equipment Manufacturer, if any, are used for reference purposes only. American Holt is an independent supplier of quality replacement parts having no affiliation with any Original Equipment Manufacturer. All prices are subject to change without notice. Copyright ©2019 American Holt Corp. All rights reserved.

IN-STOCK AND READY TO SHIP.

CHANGE PARTS - 200 LID x 202 CAN

| ITEM NO. | PART NO. | DESCRIPTION | QTY |
|----------|------------|---|-----|
| 1 | #### | Cap Magazine Rods Retainer (INCLUDES HARDWARE) | 1 |
| 2 | #### | Cover Guide Strap Set - L.H. & R.H. | 1 |
| 3 | #### | Rear Cover Feed Chute Rod | 1 |
| 4 | #### | Side Cover Feed Chute Rod | 2 |
| 5 | #### | Front Cover Feed Chute Rod | 1 |
| 6 | #### | Upper Connecting Rod Ring (INCLUDES HARDWARE) | 1 |
| 7 | #### | Lower Connecting Rod Ring (INCLUDES HARDWARE) | 1 |
| 8 | *59L846AH | Sensor Head Holder | 1 |
| 9 | #### | Rear Cap Magazine Rod | 1 |
| 10 | #### | Side Cap Magazine Rod | 2 |
| 11 | #### | Front Cap Magazine Rod | 1 |
| 12 | #### | Right Cap Magazine Guide | 1 |
| 13 | #### | Front Cap Magazine Guide | 1 |
| 14 | #### | Left Cap Magazine Guide | 1 |
| 15 | *143H654AH | Solenoid Housing Cover (INCLUDES HARDWARE) | 1 |
| 16 | *64H685AH | Solenoid Case - 200MS (INCLUDES HARDWARE) | 1 |
| 17 | *25H615AH | Separator Bracket Top Gasket | 1 |
| 18 | *63H685AH | Separator Bracket - 32 Degree - 200MS (INCLUDES HARDWARE) | 1 |
| 19 | *197L856AH | Separator Disc/Knife - 200/202 (INCLUDES HARDWARE) | 1 |

| ITEM NO. | PART NO. | DESCRIPTION | QTY |
|----------|------------|---|-----|
| 20 | *471H673AH | Outer Cap Guide Section - 200MS/202 | 1 |
| 21 | *469H673AH | Inner Cap Guide - 200MS | 1 |
| 22 | *470H673AH | Outer Cap Guide Rail - 200MS | 1 |
| 23 | 1H684AH | Can Flange Guide | 1 |
| 24 | 8L815AH | Oil Seal | 1 |
| 25 | *100H659AH | Cap Pusher - 200MS | 9 |
| 26 | *96H670AH | Gassing Turret Plate - 200 Diameter B=+30 (INCLUDES HARDWARE) | 1 |
| 27 | *95H670AH | Gassing Turret - 202 Diameter TB=+30 PB=+30 (INCLUDES HARDWARE) | 1 |
| 28 | 28L870AH | Feed Turret Insert | 9 |
| 29 | *8H653AH | Seaming Turret Spacer - Split (INCLUDES HARDWARE) | 1 |
| 30 | *48H617AH | Discharge Turret Clamp - Split (INCLUDES HARDWARE) | 1 |
| 31 | *5H653AH | Discharge Turret Spacer - Split (INCLUDES HARDWARE) | 1 |
| 32 | *6H608AH | Seaming & Discharge Turret - 202 B=+30 | 4 |
| 33 | *8H684AH | Can Feed Inlet Rail - 202 | 1 |
| 34 | *6H683AH | Can Feed & Discharge Rail - 202 | 1 |
| 35 | *48L653AH | Discharge Table Rail Spacer | 2 |
| 36 | *12H645AH | Top Discharge Upper Rail - 202 | 1 |
| N/A | #### | Discharge Rail - Upper - Bottom | 1 |
| 37 | *70H642AH | Seaming Chuck Bell SB=STD LB=STD (INCLUDES HARDWARE) | 1 |
| 38 | *349H653AH | Seaming Chuck Bell Spacer - Split | 1 |

*** All parts, aside from 28L870AH, 1H684AH and 8L815AH are made to order.**

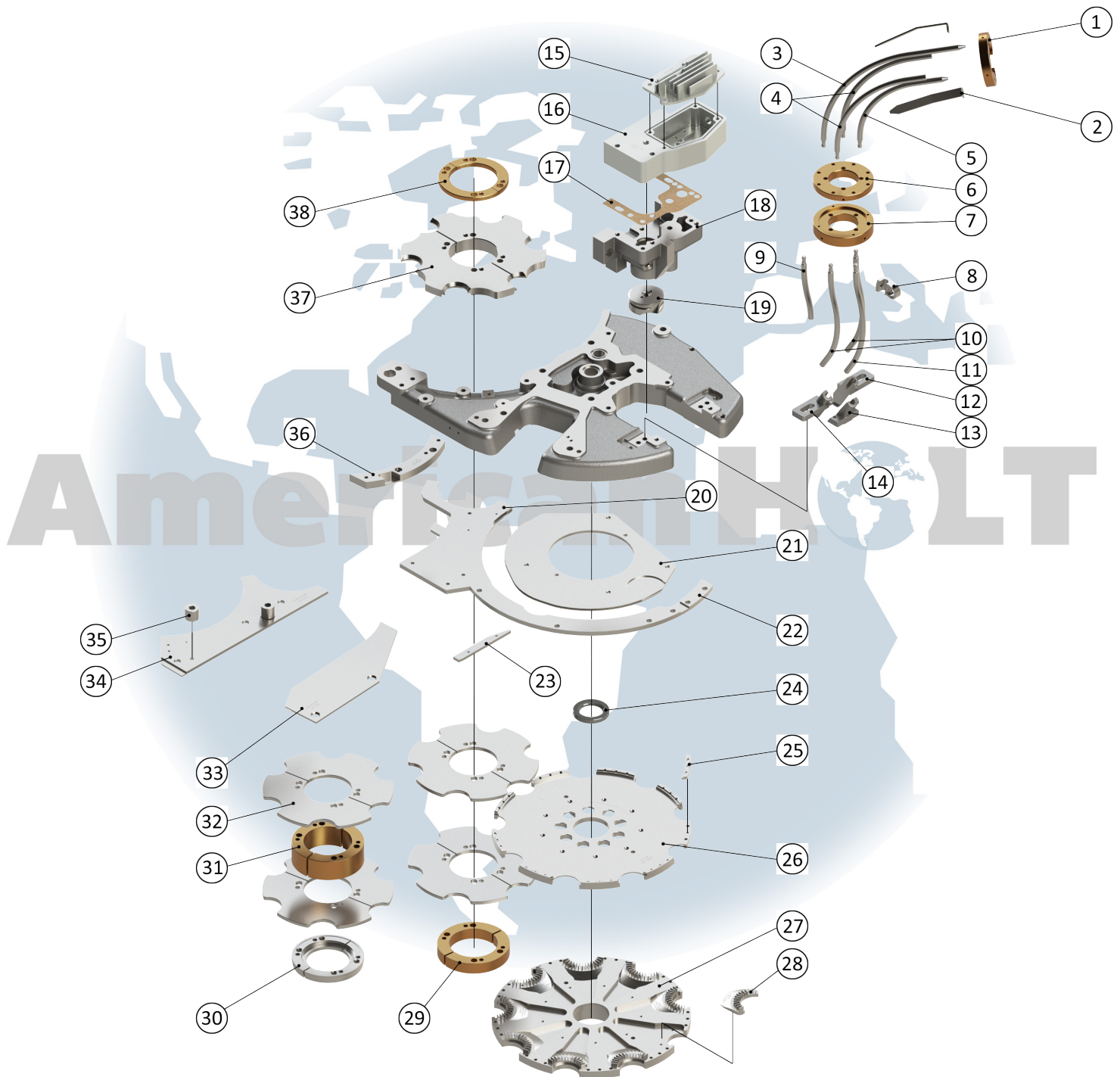
* - Item made-to-order N/A - Item is not currently offered by American Holt

FOR MORE INFORMATION, CONTACT AMERICAN HOLT AT:
781-440-9993 • sales@americanholt.com • www.americanholt.com

61H and 62H Seamers

AFTER MARKET PARTS FOR:

CHANGE PARTS – 202 LID x 204 CAN



NOTICE: All parts offered by American Holt are manufactured by or for American Holt and not by or for the Original Equipment Manufacturer. Part numbers shown that are those of the Original Equipment Manufacturer, if any, are used for reference purposes only. American Holt is an independent supplier of quality replacement parts having no affiliation with any Original Equipment Manufacturer. All prices are subject to change without notice. Copyright ©2019 American Holt Corp. All rights reserved.

IN-STOCK AND READY TO SHIP.

CHANGE PARTS - 202 LID x 204 CAN

| ITEM NO. | PART NO. | DESCRIPTION | QTY |
|----------|-------------|---|-----|
| 1 | 265L685AH | Cap Magazine Rods Retainer - 202MS (INCLUDES HARDWARE) | 1 |
| 2 | 36L656AH | Cover Guide Strap Set - L.H. & R.H. | 1 |
| 3 | 144L856AH | Rear Cover Feed Chute Rod - 202MS | 1 |
| 4 | 143L856B.AH | Side Cover Feed Chute Rod | 2 |
| 5 | 142L856AH | Front Cover Feed Chute Rod - 202MS | 1 |
| 6 | 347L885AH | Upper Connecting Rod Ring - 202 MS (INCLUDES HARDWARE) | 1 |
| 7 | 348L885AH | Lower Connecting Rod Ring - 202MS (INCLUDES HARDWARE) | 1 |
| 8 | 59L846AH | Sensor Head Holder | 1 |
| 9 | 138L856AH | Rear Cap Magazine Rod - 32 Degree | 1 |
| 10 | 70H656AH | Side Cap Magazine Rod - 32 Degree | 2 |
| 11 | 71H656AH | Front Cap Magazine Rod - 32 Degree | 1 |
| 12 | 67H656AH | Right Cap Magazine Guide - 32 Degree | 1 |
| 13 | 68H656AH | Front Cap Magazine Guide - 32 Degree | 1 |
| 14 | 66H656AH | Left Cap Magazine Guide - 32 Degree | 1 |
| 15 | 143H654AH | Solenoid Housing Cover (INCLUDES HARDWARE) | 1 |
| 16 | 62H685AH | Solenoid Case - 202MS (INCLUDES HARDWARE) | 1 |
| 17 | 25H615AH | Separator Bracket Top Gasket | 1 |
| 18 | 61H685AH | Separator Bracket - 32 Degree - 202MS (INCLUDES HARDWARE) | 1 |
| 19 | 124L856AH | Separator Disc/Knife - 202MS (INCLUDES HARDWARE) | 1 |

| ITEM NO. | PART NO. | DESCRIPTION | QTY |
|----------|------------------------|--|-----|
| 20 | 414H673AH | Outer Cap Guide Section - 202MS | 1 |
| 21 | 412H673AH | Inner Cap Guide - 202MS | 1 |
| 22 | 413H673AH | Outer Cap Guide Rail - 202MS | 1 |
| 23 | 1H684AH | Can Flange Guide | 1 |
| 24 | 8L815AH | Oil Seal | 1 |
| 25 | 82H659AH | Cap Pusher - 202MS | 9 |
| 26 | 180H670AH | Feed Turret Plate - 204 Diameter (INCLUDES HARDWARE) | 1 |
| 27 | 179H670AH | Feed Turret - 204 Diameter (INCLUDES HARDWARE) | 1 |
| 28 | 99L870AH | Feed Turret Insert | 9 |
| 29 | *137H653AH | Seaming Turret Spacer - Split (INCLUDES HARDWARE) | 1 |
| 30 | 48H617AH | Discharge Turret Clamp - Split (INCLUDES HARDWARE) | 1 |
| 31 | 5H653AH | Discharge Turret Spacer - Split (INCLUDES HARDWARE) | 1 |
| 32 | 52H608AH | Seaming & Discharge Turret - 204 Diameter | 4 |
| 33 | 88H684AH | Can Feed Inlet Rail | 1 |
| 34 | 103H683AH | Can Feed & Discharge Rail - 204 Diameter | 1 |
| 35 | 48L653AH | Discharge Table Rail Spacer | 2 |
| 36 | 15H645AH | Upper Discharge Rail - 200-211 | 1 |
| | *148H645AH (NOT SHOWN) | Bottom Upper Discharge Rail | 1 |
| 37 | 67H642AH | Seaming Chuck Bell - 202MS SB=STD LB=STD (INCLUDES HARDWARE) | 1 |
| 38 | 349H653AH | Seaming Chuck Bell Spacer - Split | 1 |

* - Item made-to-order N/A - Item is not currently offered by American Holt

FOR MORE INFORMATION, CONTACT AMERICAN HOLT AT:
781-440-9993 • sales@americanholt.com • www.americanholt.com

61H and 62H Seamers

AFTER MARKET PARTS FOR:

CHANGE PARTS 211 DIAMETER



NOTICE: All parts offered by American Holt are manufactured by or for American Holt and not by or for the Original Equipment Manufacturer. Part numbers shown that are those of the Original Equipment Manufacturer, if any, are used for reference purposes only. American Holt is an independent supplier of quality replacement parts having no affiliation with any Original Equipment Manufacturer. All prices are subject to change without notice. Copyright ©2019 American Holt Corp. All rights reserved.

IN-STOCK AND READY TO SHIP.

CHANGE PARTS 211 DIAMETER

| ITEM NO. | PART NO. | DESCRIPTION | QTY |
|----------|-------------|---|-----|
| 1 | 265L685AH | Cap Magazine Rods Retainer - 202MS (INCLUDES HARDWARE) | 1 |
| 2 | 36L656AH | Cover Guide Strap Set - L.H. & R.H. | 1 |
| 3 | 144L856AH | Rear Cover Feed Chute Rod - 202MS | 1 |
| 4 | 143L856B.AH | Side Cover Feed Chute Rod | 2 |
| 5 | 142L856AH | Front Cover Feed Chute Rod - 202MS | 1 |
| 6 | 347L885AH | Upper Connecting Rod Ring - 202 MS (INCLUDES HARDWARE) | 1 |
| 7 | 348L885AH | Lower Connecting Rod Ring - 202MS (INCLUDES HARDWARE) | 1 |
| 8 | 59L846AH | Sensor Head Holder | 1 |
| 9 | 138L856AH | Rear Cap Magazine Rod - 32 Degree | 1 |
| 10 | 70H656AH | Side Cap Magazine Rod - 32 Degree | 2 |
| 11 | 71H656AH | Front Cap Magazine Rod - 32 Degree | 1 |
| 12 | 67H656AH | Right Cap Magazine Guide - 32 Degree | 1 |
| 13 | 68H656AH | Front Cap Magazine Guide - 32 Degree | 1 |
| 14 | 66H656AH | Left Cap Magazine Guide - 32 Degree | 1 |
| 15 | 143H654AH | Solenoid Housing Cover (INCLUDES HARDWARE) | 1 |
| 16 | 62H685AH | Solenoid Case - 202MS (INCLUDES HARDWARE) | 1 |
| 17 | 25H615AH | Separator Bracket Top Gasket | 1 |
| 18 | 61H685AH | Separator Bracket - 32 Degree - 202MS (INCLUDES HARDWARE) | 1 |
| 19 | 124L856AH | Separator Disc/Knife - 202MS (INCLUDES HARDWARE) | 1 |

| ITEM NO. | PART NO. | DESCRIPTION | QTY |
|----------|------------------------|--|-----|
| 20 | 414H673AH | Outer Cap Guide Section - 202MS | 1 |
| 21 | 412H673AH | Inner Cap Guide - 202MS | 1 |
| 22 | 413H673AH | Outer Cap Guide Rail - 202MS | 1 |
| 23 | 1H684AH | Can Flange Guide | 1 |
| 24 | 8L815AH | Oil Seal | 1 |
| 25 | 82H659AH | Cap Pusher - 202MS | 9 |
| 26 | 180H670AH | Feed Turret Plate - 204 Diameter (INCLUDES HARDWARE) | 1 |
| 27 | 179H670AH | Feed Turret - 204 Diameter (INCLUDES HARDWARE) | 1 |
| 28 | 99L870AH | Feed Turret Insert | 9 |
| 29 | *137H653AH | Seaming Turret Spacer - Split (INCLUDES HARDWARE) | 1 |
| 30 | 48H617AH | Discharge Turret Clamp - Split (INCLUDES HARDWARE) | 1 |
| 31 | 5H653AH | Discharge Turret Spacer - Split (INCLUDES HARDWARE) | 1 |
| 32 | 52H608AH | Seaming & Discharge Turret - 204 Diameter | 4 |
| 33 | 88H684AH | Can Feed Inlet Rail | 1 |
| 34 | 103H683AH | Can Feed & Discharge Rail - 204 Diameter | 1 |
| 35 | 48L653AH | Discharge Table Rail Spacer | 2 |
| 36 | 15H645AH | Upper Discharge Rail - 200-211 | 1 |
| | *148H645AH (NOT SHOWN) | Bottom Upper Discharge Rail | 1 |
| 37 | 67H642AH | Seaming Chuck Bell - 202MS SB=STD LB=STD (INCLUDES HARDWARE) | 1 |
| 38 | 349H653AH | Seaming Chuck Bell Spacer - Split | 1 |

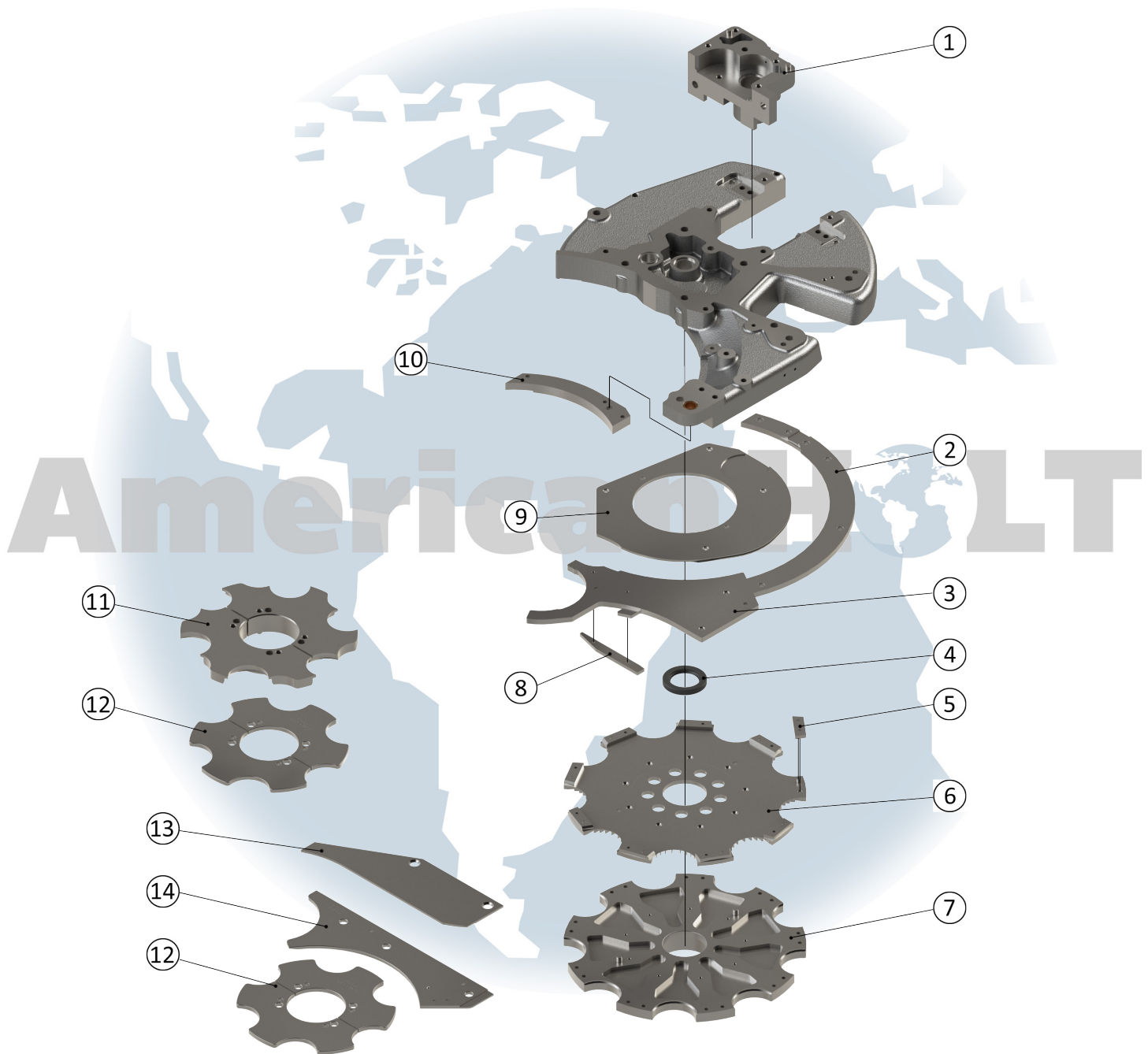
* - Item made-to-order N/A - Item is not currently offered by American Holt

FOR MORE INFORMATION, CONTACT AMERICAN HOLT AT:
781-440-9993 • sales@americanholt.com • www.americanholt.com

61H and 62H Seamers

AFTER MARKET PARTS FOR:

CHANGE PARTS – 300 FOOD



NOTICE: All parts offered by American Holt are manufactured by or for American Holt and not by or for the Original Equipment Manufacturer. Part numbers shown that are those of the Original Equipment Manufacturer, if any, are used for reference purposes only. American Holt is an independent supplier of quality replacement parts having no affiliation with any Original Equipment Manufacturer. All prices are subject to change without notice. Copyright ©2019 American Holt Corp. All rights reserved.

IN-STOCK AND READY TO SHIP.

CHANGE PARTS - 300 FOOD

| ITEM NO. | PART NO. | DESCRIPTION | QTY |
|----------|----------------|---|-----|
| N/A | H685AH | NC NC Solenoid Case | 1 |
| 1 | 28H685AH | Separator Bracket - 15 Degree - 300 to 303 | 1 |
| 2 | **44H673AH | Outer Cap Guide Rail - 300 Diameter | 1 |
| 3 | **45H673AH | Outer Cap Guide Section - 300 Diameter | 1 |
| 4 | 8L815AH | Oil Seal | 1 |
| 5 | 92H659AH | Cap Pusher - 300 Diameter | 9 |
| 6 | 30H670AH | Feed Turret Plate - 300 Diameter B=STD | 1 |
| 7 | 29H670AH | Feed Turret - 300 Diameter B=STD | 1 |
| 8 | 1H684AH | Can Flange Guide | 1 |
| 9 | **43H673AH | Inner Cap Guide - 300 Diameter | 1 |
| 10 | 6H645AH | Upper Discharge Rail - 300 Diameter | 1 |
| 11 | 63H642AH | Seaming Chuck Bell - 300 Diameter STD | 1 |
| 12 | 5H608-300STDAH | Seaming & Discharge Turret - 300 Diameter B=STD | 4 |
| 13 | 7H684AH | Can Feed Inlet Rail - 300 Diameter | 1 |
| 14 | 5H683AH | Infeed Discharge Rail - 300 Diameter | 1 |

| MS Version | |
|-------------|---|
| **441H673AH | Outer Cap Guide Rail - 300 Diameter MS |
| **442H673AH | Outer Cap Guide Section - 300 Diameter MS |
| **439H673AH | Inner Cap Guide - 300 Diameter MS |

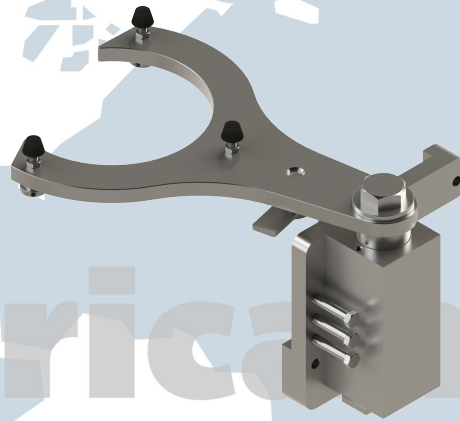
* - Item made-to-order N/A - Item is not currently offered by American Holt

FOR MORE INFORMATION, CONTACT AMERICAN HOLT AT:
781-440-9993 • sales@americanholt.com • www.americanholt.com

61H and 62H Seamers

AFTER MARKET PARTS FOR:

TOOLS & MISCELLANEOUS PARTS



GASSTURRET-SUPPORTAH
Installation Fixture
61H/62H Gassing Turret

* - Item made-to-order *N/A - Item is not currently offered by American Holt*

NOTICE: All parts offered by American Holt are manufactured by or for American Holt and not by or for the Original Equipment Manufacturer. Part numbers shown that are those of the Original Equipment Manufacturer, if any, are used for reference purposes only. American Holt is an independent supplier of quality replacement parts having no affiliation with any Original Equipment Manufacturer. All prices are subject to change without notice. Copyright ©2019 American Holt Corp. All rights reserved.