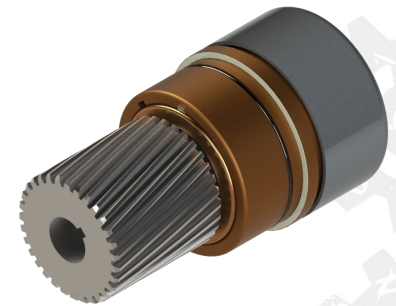


Reduce Inventory Costs and Machine Downtime
Assemblies Built with ALL NEW PARTS

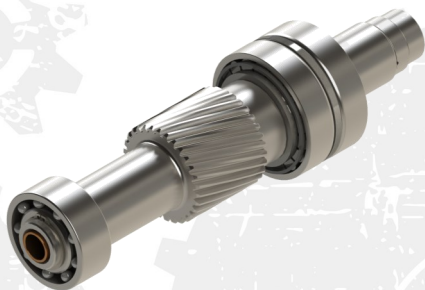
In-stock with 24 Hour Shipping
Assembled with Genuine Timken Bearings

Aftermarket Lifter Assemblies, Lower Chuck Plates and Cams for: Angelus 180S

One of the following:	Lower Chuck Top w/ Spring
6S800AH	w/8S840AH Spring
7S800AH	w/5S840AH Spring
5S800AH	Lower Chuck Bottom
One of the following:	Lower Chuck Plate
3S827AH	Lower Chuck Plate
7M227AH	Lower Chuck Plate, Tapered Dome
36S815AH	V-Ring
5S420AH	Lower Chuck Return Cam, Feed
6S420AH	Lower Chuck Return Cam, Discharge
12S820AH	Lower Chuck Cam
13S820AH	Lower Chuck Return Cam, Feed
14S820AH	Lower Chuck Return Cam, Discharge
16S820AH	Knockout Cam, Split



Components Also Sold Separately



Aftermarket Spindle Assembly, Face Seal and Rotors for: Angelus 180S

4S800AH	Seamer Spindle Sub-Assembly w/45S844AH
8S800AH	Face Seal and Rotor w/85S817AH Retainer
9L800AH	Face Seal and Rotor w/49H617AH Retainer

NOTICE: All parts offered by American Holt are manufactured by or for American Holt and not by or for the original equipment manufacturer. Part numbers shown that are those of the Original Equipment Manufacturer, if any, are used for reference purposes only. American Holt is an independent supplier of quality replacement parts having no affiliation with any original equipment manufacturer. All prices subject to change without notice.