

American Holt Crown Filler Parts

Greaseless and Greased Valve Actuating Cam Assembly
for Cans and Bottles
UPPER

Powered by Servi-Tech with over 50 years experience.

REFERENCE GUIDE

***MRO strategies for OEM
parts and assemblies***

781-440-9993
sales@americanholt.com
www.americanholt.com



American Holt is a full-service engineering firm focused on the reverse engineering of high-usage machinery components. Founded in 1995, American Holt manufactures aftermarket replacement parts for machines used by the beverage, food processing, packaging, and paper converting industries. We provide engineered savings to customers around the world.

CONTACT:

American Holt
203 Carnegie Row
Norwood, MA 02062
781-440-9993
sales@americanholt.com

HOURS:

Monday-Friday
8:00am to 5:00pm EST

SALES:

Tom St. Lawrence, President
Charlene Butts, Sales Manager

NOTICE:

All parts offered by American Holt are manufactured by or for American Holt and not by or for the Original Equipment Manufacturer. Part numbers shown that are those of the Original Equipment Manufacturer, if any, are used for reference purposes only. American Holt is an independent supplier of quality replacement parts having no affiliation with any Original Equipment Manufacturer. All prices are subject to change without notice.

Copyright ©2025 American Holt Corp. All rights reserved.

Table of Contents

STI Crown Can Filler



Greaseless Valve Operating Cam Assembly – Bottle EZ-300-B 2

Greaseless Valve Operating Cam Assembly – Can EZ-300-C 4

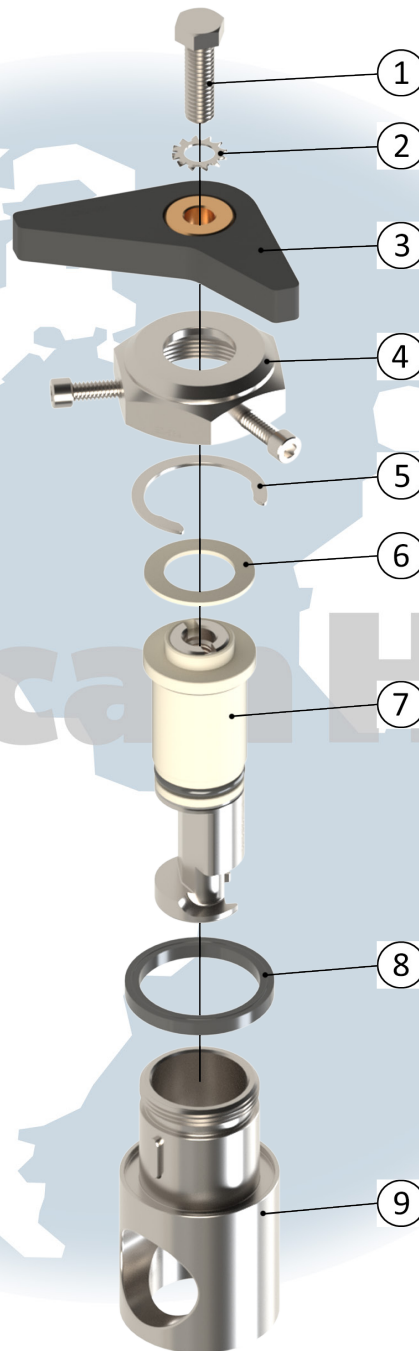
Greased Valve Operating Cam Assembly – Bottle EZ-500-B 6

Greased Valve Operating Cam Assembly – Can EZ-500-C 8

STI Crown Can Filler

AFTER MARKET PARTS FOR:

Greaseless Valve Operating Cam Assembly for Bottles



NOTICE: All parts offered by American Holt are manufactured by or for American Holt and not by or for the Original Equipment Manufacturer. Part numbers shown that are those of the Original Equipment Manufacturer, if any, are used for reference purposes only. American Holt is an independent supplier of quality replacement parts having no affiliation with any Original Equipment Manufacturer. All prices are subject to change without notice. Copyright ©2024 American Holt Corp. All rights reserved.

IN-STOCK AND READY TO SHIP.

Greaseless Valve Operating Cam Assembly for Bottles

Assembly Number: EZ-300-B

ITEM NO.	PART NO.	DESCRIPTION	OEM PART NO.	QTY
1	HHBOLT-SS-0.375-16X1.25	Screw		1
2	WASHTOOTHLOCK-SS-0.375	Tooth Lock Washer		1
3	CNU-050-C	Filling Valve Operating Lever with Washer Assembly	453050-2	1
3.1	CNU-050	Filling Valve Operating Lever (Bottle & Can)	453050	1
3.2	EZ-528-A	Bronze Shear Washer	453049 453049-2	1
4	EZ-534	Valve Operating Cam Retainer Nut (INCLUDES HARDWARE)	187233	1
5	EZ-096	Retaining Ring - SS	506096	1
6	EZ-529-T	Outer Thrust Washer	187262	1
7	EZ-383-B-CC	Greaseless Cam and Bushing Assembly (Bottle)		1
7.1	EZ-506-2	Greaseless Cam Bushing Assembly	BEV978-K2	1
7.1.1	EZ-978-B-4	Greaseless Cam Bushing	BEV383-03B	1
7.1.2	ORV-116	Inside Viton O-Ring		4
7.1.3	ORV-212	Viton O-Ring	527090	1
7.1.4	ORV-120	Front Outside Viton O-Ring		1
7.1.5	EZ-978-B-4-A	Greaseless Slip Washer		1
7.1.6	EZ-533	Nylon Nut Lock (Plug)	187652	1
7.2	EZ-383-B	Greaseless Valve Actuating Cam		1
8	EZ-535	Cam Housing Seal	187232 A34133	1
9	EZ-536-K	Valve Operating Cam Body	187539 A34146	1

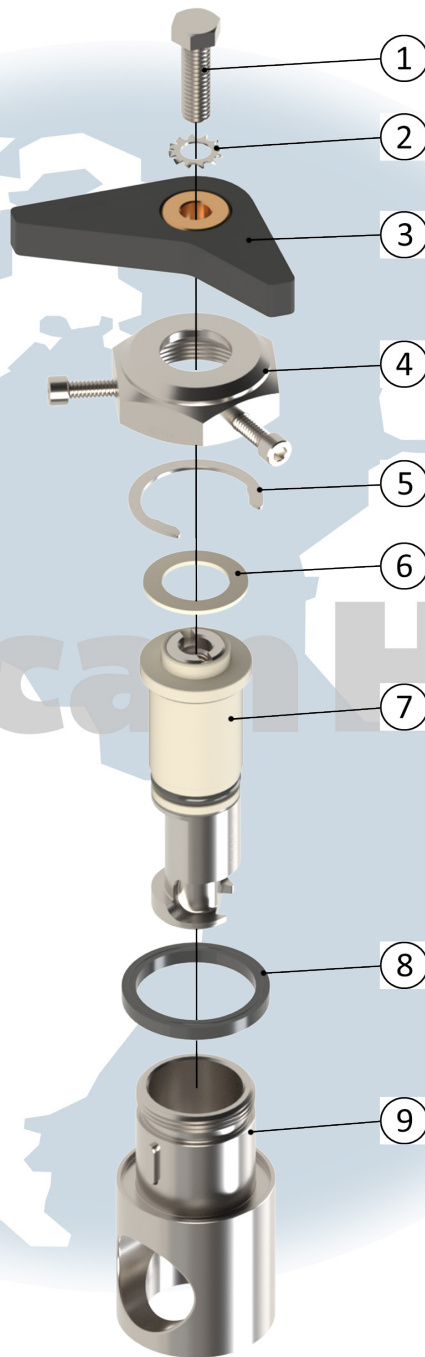
* - Item made-to-order N/A - Item is not currently offered by American Holt

FOR MORE INFORMATION, CONTACT AMERICAN HOLT AT:
781-440-9993 • sales@americanholt.com • www.americanholt.com

STI Crown Can Filler

AFTER MARKET PARTS FOR:

Greaseless Valve Operating Cam Assembly for Cans



NOTICE: All parts offered by American Holt are manufactured by or for American Holt and not by or for the Original Equipment Manufacturer. Part numbers shown that are those of the Original Equipment Manufacturer, if any, are used for reference purposes only. American Holt is an independent supplier of quality replacement parts having no affiliation with any Original Equipment Manufacturer. All prices are subject to change without notice. Copyright ©2024 American Holt Corp. All rights reserved.

Greaseless Valve Operating Cam Assembly for Cans

Assembly Number: Can EZ-300-C

ITEM NO.	PART NO.	DESCRIPTION	OEM PART NO.	QTY
1	HHBOLT-SS-0.375-16X1.25	Screw		1
2	WASHTOOTHLOCK-SS-0.375	Tooth Lock Washer		1
3	CNU-050-C	Filling Valve Operating Lever with Washer Assembly	453050-2	1
3.1	CNU-050	Filling Valve Operating Lever (Bottle & Can)	453050	1
3.2	EZ-528-A	Bronze Shear Washer	453049 453049-2	1
4	EZ-534	Valve Operating Cam Retainer Nut (INCLUDES HARDWARE)	187233	1
5	EZ-096	Retaining Ring - SS	506096	1
6	EZ-529-T	Outer Thrust Washer .060	187262	1
7	EZ-383-C-CC	Greaseless Cam and Bushing Assembly (Can)		1
7.1	EZ-506-2	Greaseless Cam Bushing Assembly	BEV978-K2	1
7.1.1	EZ-978-B-4	Greaseless Cam Bushing	BEV383-03B	1
7.1.2	ORV-116	Inside Viton O-Ring		4
7.1.3	ORV-212	Viton O-Ring	527090	1
7.1.4	ORV-120	Front Outside Viton O-Ring		1
7.1.5	EZ-978-B-4-A	Greaseless Slip Washer		1
7.1.6	EZ-533	Nylon Nut Lock (Plug)	187652	1
7.2	EZ-383-C	Greaseless Valve Actuating Cam	BEV978-02 BEV410-03A BEV410-P	1
8	EZ-535	Cam Housing Seal	187232 A34133	1
9	EZ-536-K	Valve Operating Cam Body	187539 A34146	1

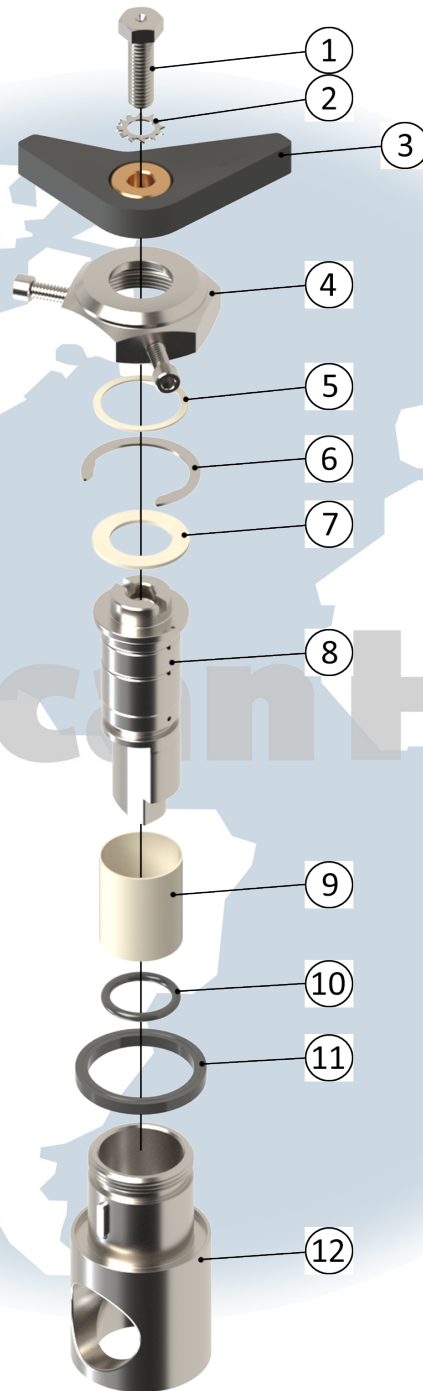
* - Item made-to-order N/A - Item is not currently offered by American Holt

FOR MORE INFORMATION, CONTACT AMERICAN HOLT AT:
781-440-9993 • sales@americanholt.com • www.americanholt.com

STI Crown Can Filler

AFTER MARKET PARTS FOR:

Greased Valve Operating Cam Assembly for Bottles



NOTICE: All parts offered by American Holt are manufactured by or for American Holt and not by or for the Original Equipment Manufacturer. Part numbers shown that are those of the Original Equipment Manufacturer, if any, are used for reference purposes only. American Holt is an independent supplier of quality replacement parts having no affiliation with any Original Equipment Manufacturer. All prices are subject to change without notice. Copyright ©2024 American Holt Corp. All rights reserved.

IN-STOCK AND READY TO SHIP.

Greased Valve Operating Cam Assembly for Bottles

Assembly Number: EZ-500-B

ITEM NO.	PART NO.	DESCRIPTION	OEM PART NO.	QTY
1	EZ-527-G	3/8-16X1-1/4 SS Hex Head Screw with Grease Hole & 3/8" Internal Lock Washer	5131105	1
2	WASHTOOTHLOCK-SS-0.375	Tooth Lock Washer		1
3	CNU-050-C	Filling Valve Operating Lever with Washer Assembly	453050-2	1
3.1	CNU-050	Filling Valve Operating Lever (Bottle & Can)	453050	1
3.2	EZ-528-A	Bronze Shear Washer	453049 453049-2	1
3	CNU-024 (OPTION NOT SHOWN)	Filling Valve Operating Lever with Pins		1
4	EZ-534	Valve Operating Cam Retainer Nut (INCLUDES HARDWARE)	187233	1
5	EZ-529-I	Inner Thrust Washer .030		1
6	EZ-096	Retaining Ring SS	506096	1
7	EZ-529-T	Outer Thrust Washer .060	187262	1
8	EZ-530-B	Greased Valve Actuating Cam	342601-A	1
9	EZ-531	Greased Actuating Cam Bearing Liner - Split	187372	1
10	ORV-212	Vition O-Ring	527090	1
11	EZ-535	Cam Housing Seal	187232 A34133	1
12	EZ-536-K	Valve Operating Cam Body	187539 A34146	1
N/A	EZ-537-B	End Support Plate		1

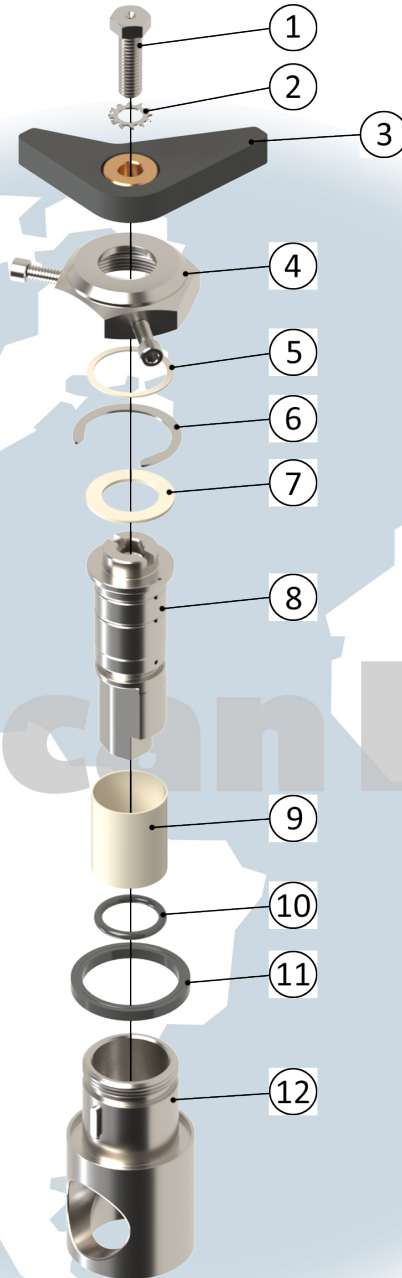
* - Item made-to-order N/A - Item is not currently offered by American Holt

FOR MORE INFORMATION, CONTACT AMERICAN HOLT AT:
781-440-9993 • sales@americanholt.com • www.americanholt.com

STI Crown Can Filler

AFTER MARKET PARTS FOR:

Greased Valve Operating Cam Assembly for Cans



NOTICE: All parts offered by American Holt are manufactured by or for American Holt and not by or for the Original Equipment Manufacturer. Part numbers shown that are those of the Original Equipment Manufacturer, if any, are used for reference purposes only. American Holt is an independent supplier of quality replacement parts having no affiliation with any Original Equipment Manufacturer. All prices are subject to change without notice. Copyright ©2024 American Holt Corp. All rights reserved.

IN-STOCK AND READY TO SHIP.

Greased Valve Operating Cam Assembly for Cans

Assembly Number: EZ-500-C

ITEM NO.	PART NO.	DESCRIPTION	OEM PART NO.	QTY
1	EZ-527-G	3/8-16X1-1/4 SS Hex Head Screw with Grease Hole & 3/8" Internal Lock Washer	5131105	1
2	WASHTOOTHLOCK-SS-0.375	Tooth Lock Washer		1
3	CNU-050-C	Filling Valve Operating Lever with Washer Assembly	453050-2	1
3.1	CNU-050	Filling Valve Operating Lever (Bottle & Can)	453050	1
3.2	EZ-528-A	Bronze Shear Washer	453049 453049-2	1
4	EZ-534	Valve Operating Cam Retainer Nut (INCLUDES HARDWARE)	187233	1
5	EZ-529-I	Inner Thrust Washer .030		1
6	EZ-096	Retaining Ring SS	506096	1
7	EZ-529-T	Outer Thrust Washer .060	187262	1
8	EZ-530-C	Greased Valve Actuating Cam	342602	1
9	EZ-531	Greased Actuating Cam Bearing Liner - Split	187372	1
10	ORV-212	Viton O-Ring	527090	1
11	EZ-535	Cam Housing Seal	187232 A34133	1
12	EZ-536-K	Valve Operating Cam Body	187539 A34146	1
N/A	EZ-537-C	End Support Plate		1

* - Item made-to-order N/A - Item is not currently offered by American Holt

FOR MORE INFORMATION, CONTACT AMERICAN HOLT AT:
781-440-9993 • sales@americanholt.com • www.americanholt.com

